

REPRESENTED BY:

INTERRA

Gaber[®]
Finishes 2024

COLOURS AND FINISHES

COLORI E FINITURE

Techno-polymer / Tecnopolimero



FINISHES / FINITURE

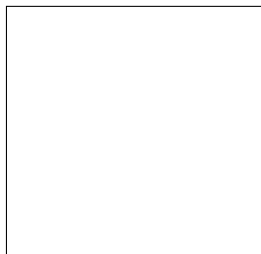
Metal finishes / Finiture metalli



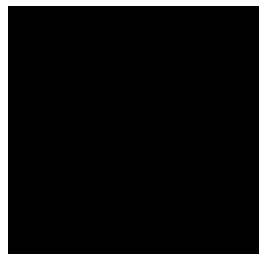
C
Chromed / Cromato



S
Satin / Satinato



B
White / Bianco



N
Black / Nero



D
Gold / Oro



98
Pale blue / Avio



16
Indigo / Indaco



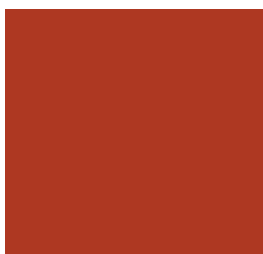
35
Lime / Lime



02
Yellow / Giallo



06
Red / Rosso



12
Brick / Mattone



22
Bordeaux / Bordeaux



54
Sand / Sabbia



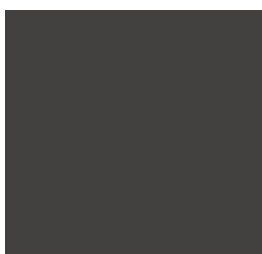
18
Dusty Rose / Polvere Rosa



55
Mineral Gray / Grigio Minerale



14
Pearl Grey / Grigio Perla



21
Grey / Grigio Antracite

COLOURS AND FINISHES

COLORI E FINITURE

Bases and frames wooden finishes / Finiture legno basi e telai



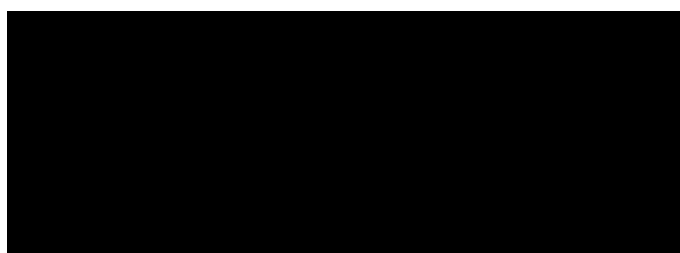
00 White stained / Bianco



F Natural Beech / Faggio naturale



RN Natural Oak / Rovere Naturale



10 Black stained / Nero

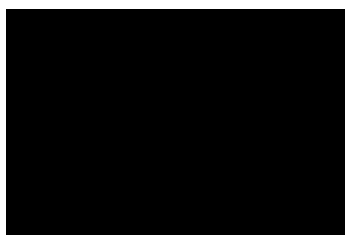
F-00-10 finishes arise from Beech Essence. RN finish come from Oak Essence
Le finiture F-00-10 derivano da essenza di Faggio. La finitura RN deriva da essenza di Rovere.

FINISHES / FINITURE

Standard Compactop Surface



00

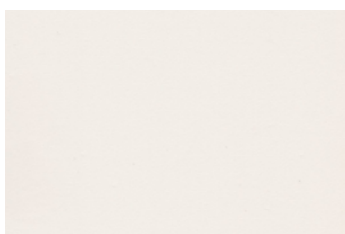


10

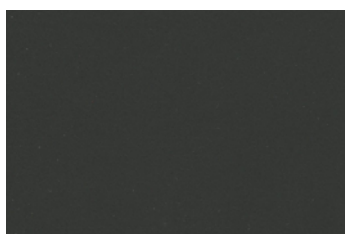


14

Special Compactop Surface Fenix - www.fenixforinteriors.com

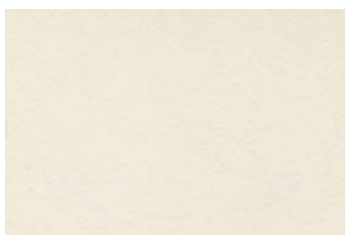


0029

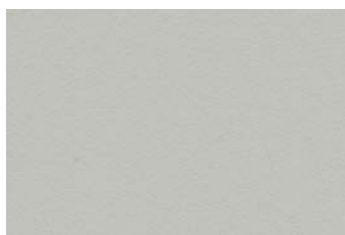


0720

Special Compactop Surface - Solid - www.arpaindustriale.com



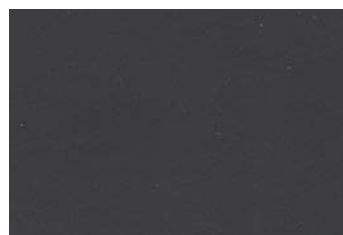
244



527



247



526

Special Compactop Surface - Wood Effect - www.arpaindustriale.com



4529



4543



4587

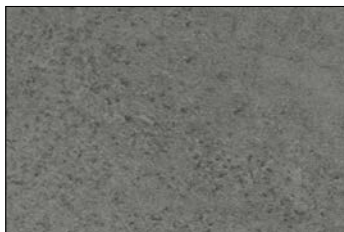


4511

COLOURS AND FINISHES

COLORI E FINITURE

Special Compactop Surface - Stone, Concrete and Marble Effect - www.arpaindustriale.com



3192



3349



3276



3329



5547

Special Compactop Surface - Marble Effect - www.lamicolor.it



6075



6076



6089

FINISHES / FINITURE

Standard Laminated Surface



F



RN



W



00



10

Special Laminated Surface - Wood Effect



B01



X41



61M



V32

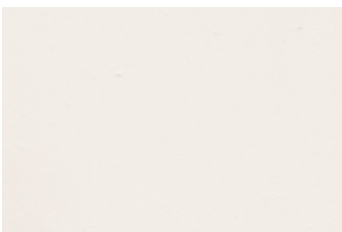


WG8

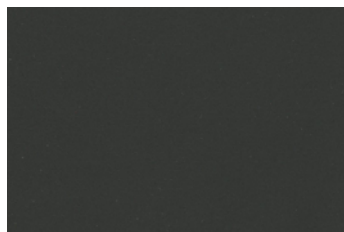


WG9

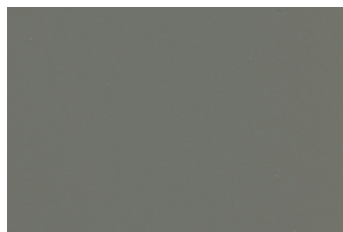
Special Laminated Surface - Fenix - www.fenixforinteriors.com



0029



0720



0718



2630



2629



2628

COLOURS AND FINISHES

COLORI E FINITURE

Marble Surface



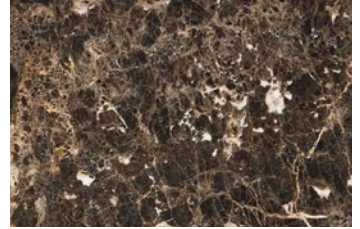
MBC - BIANCO CARRARA



MNM - NERO MARQUINA



MVG - VERDE GUATEMALA

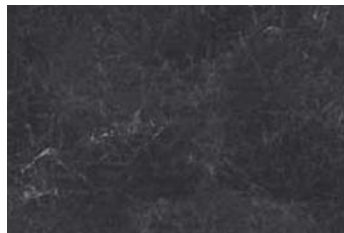


MED - EMPERADOR DARK

Porcelain Surface



PCO - CALACATTA ORO



PNG - NERO GRECO

K King Fabric / Tessuto King

6001

6091

6034

6052

7019

7022



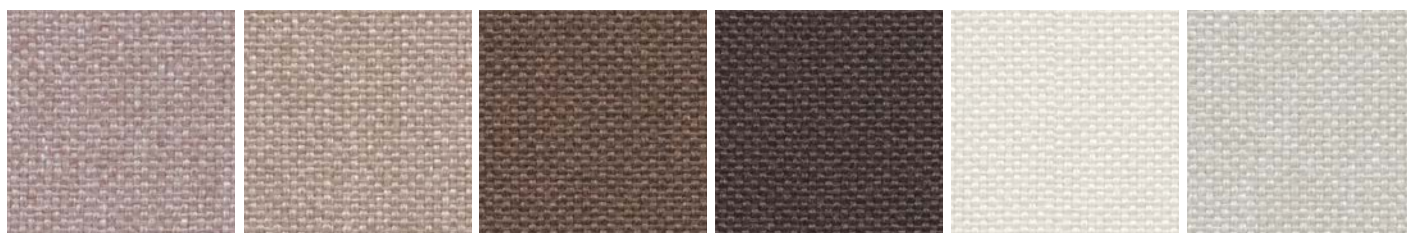
3030

3082

4021

4032

5001



1033

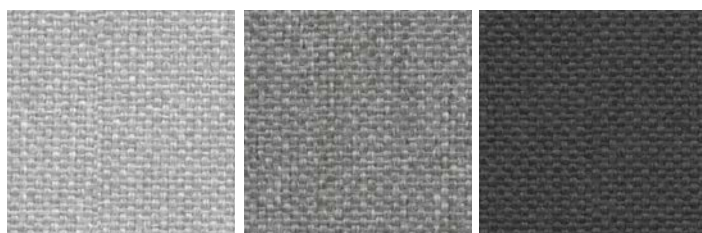
1008

2003

2007

1012

1025



8032

8006

8011

- Composition: 100% POLYESTER - TREVIRA CS
- Abrasion: UNI EN ISO 12947-2 80.000 Cycle Martindale $\pm 10\%$
- Light Resistance-Xenotest: UNI EN ISO 105-B02 / 6 (tol from 5 to 8)
- Fire proof: UNI 9174 - 8456 Class C1, UNI 9175 Class 1, DIN 4102 Class B1, NF 92501-7 Class M1, NF D 60013, 1IM (UNI 9175) Class AM18, EN 1021-1 & 2, BS Crib 5, BS 7176 Class Medium Hazard, EN 13773 Class 1, OENORM 3800-1 Class B1,Q1,TR1, California TB117, USA NFPA 701, USA NFPA 260, IMO A 652 (16) Part 8 Upholstery
- Maintenance: Standard 60° C cotton cycle.

Visit www.fidivi.com for complete colours range / Visionate la completa gamma colori su www.fidivi.com

COLOURS AND FINISHES

COLORI E FINITURE

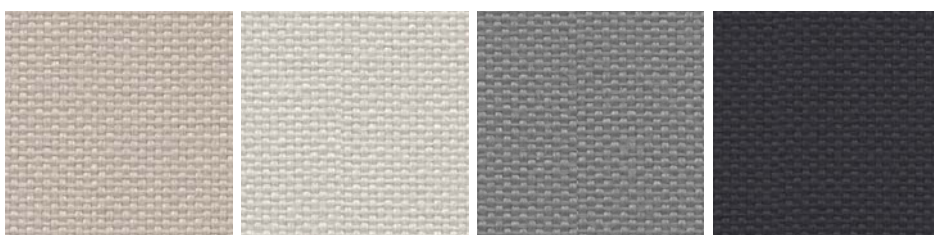
L King L Fabric / Tessuto King L



6071

3090

4027



1010

1025

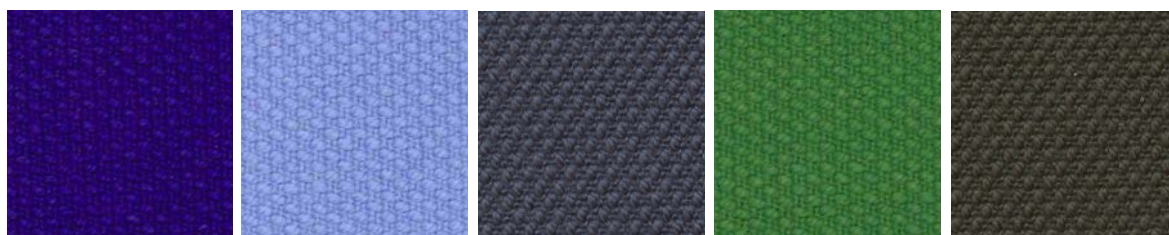
8014

8010

- Composition: 100% POLYESTER
- Abrasion: UNI EN ISO 12947/2 70.000 Cycle Martindale $\pm 10\%$
- Light Resistance-Xenotest: UNI EN ISO 105-B02 / 6 (tol from 5 to 8)
- Fire proof: UNI 9174 - 8456 Class C1, DIN 4102 Class B1, NF P 92501-7 Class M1, IMO Res. A652 (16), NF D 60013 Class AM18, EN 1021-1 & 2, BS 5852 part II Crib 5, BS 7176 Medium Hazard, ONORM B 3825-Onorm A 3800-1 Class B1-Q1-TR1, Euroclass EN 13501-1, EN 1021-1 & 2, 1IM (UNI 9175), California TB 117
- Maintenance: Use vacuum-cleaner, don't brush.

Visit www.fidivi.com for complete colours range / Visionate la completa gamma colori su www.fidivi.com

DK Kvadrat Fabric (Steelcut3) / Tessuto Kvadrat (Steelcut3)



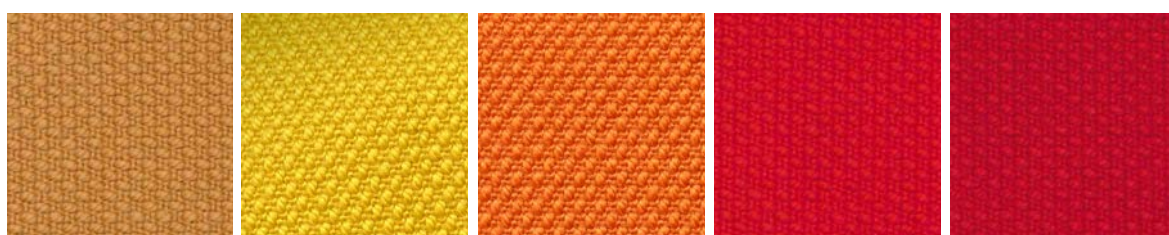
672

732

780

932

975



252

445

535

545

552



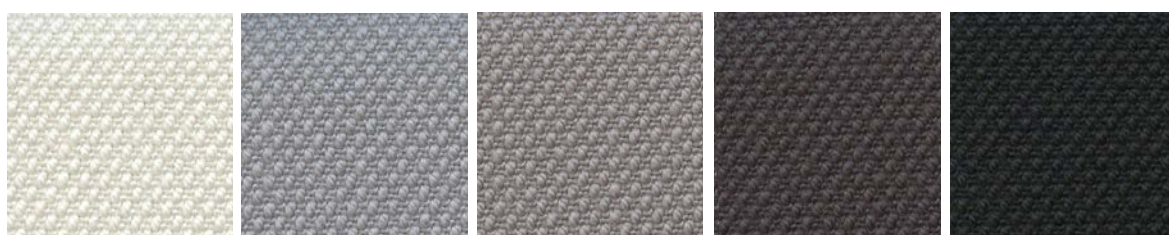
220

240

365

605

655



110

140

155

180

190

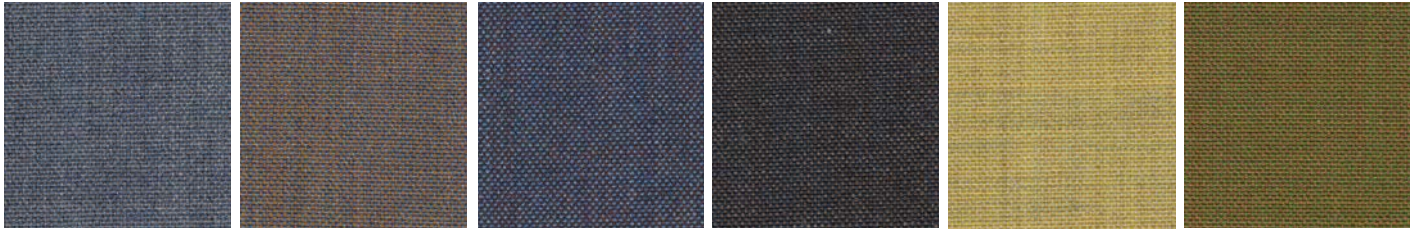
- Composition: 90% New wool worsted - 10% Nylon
- Abrasion: 100.000 Martindale rubs, EN ISO 12947
- Lightfastness: Note 5-7, ISO 105-B02
- AS/NZS 1530.3, BS 5852 crib 5 with treatment, BS 5852 part 1, IMO FTP Code 2010 Part 8, NF D 60 013, NFPA 260, SN 198 898 5.3 with treatment, UNI 9175 1IM, US Cal. Bull. 117-2013, EN 1021-1/2, AS/NZS 3837 class 2, ÖNORM B1/Q1, ASTM E84 Class A Unadhered, ASTM E84 Class B Adhered

Visit www.kvadrat.dk for complete colours range / Visionate la completa gamma colori su www.kvadrat.dk

COLOURS AND FINISHES

COLORI E FINITURE

DK Kvadrat Fabric (Remix3) / Tessuto Kvadrat (Remix3)



733

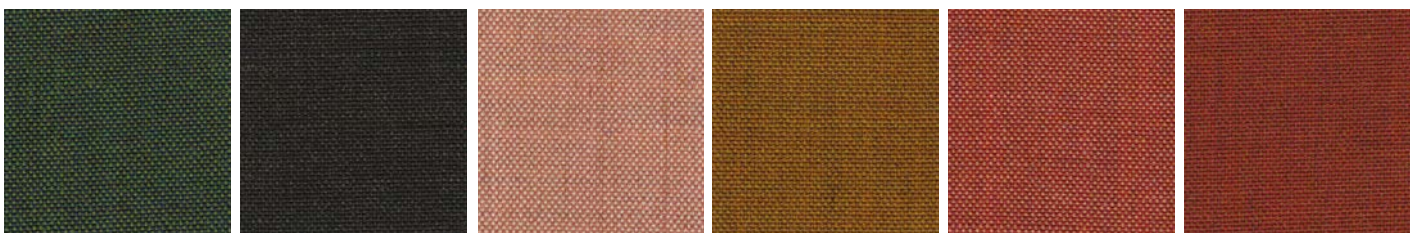
722

743

753

923

942



982

973

612

422

632

653



682

692

233

113

123

143



183

- Composition: 90% wool, 10% nylon
- Abrasion: Approximately 100.000 Martindale rubs, EN ISO 12947
- Lightfastness: Note 5-7, ISO 105-B02
- AS/NZS 1530.3, BS 5852 crib 5 with treatment, BS 5852 ignition source 3, BS 5852 part 1, IMO FTP Code 2010 Part 7 with treatment, IMO FTP Code 2010 Part 8, NF D 60 013, NFPA 260, SN 198 898 5.3 with treatment, UNI 9175 1IM, US Cal. Bull. 117-2013, EN 1021-1/2, AS/NZS 3837 class 2, ÖNORM B1/Q1, ASTM E84 Class A Unadhered, ASTM E84 Class A Adhered, GB 50222 B1 with treatment

Visit www.kvadrat.dk for complete colours range / Visionate la completa gamma colori su www.kvadrat.dk

S Superb Trevira Fabric / Tessuto Velvet-Velluto



5130

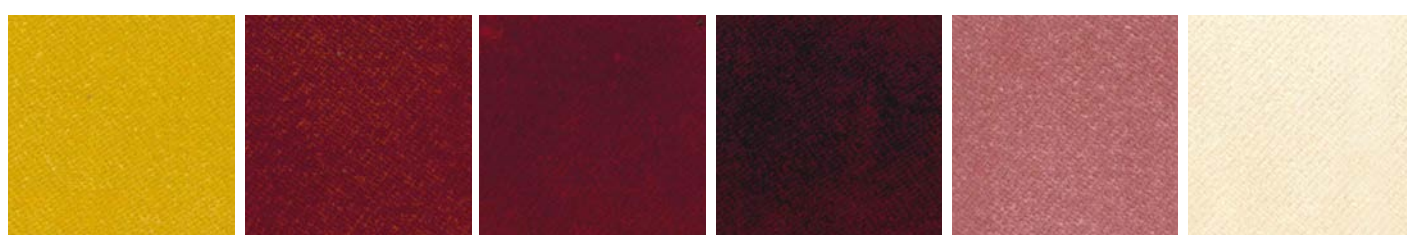
5127

5131

5140

5134

5135



5106

5112

5118

5119

5114

5103



5144

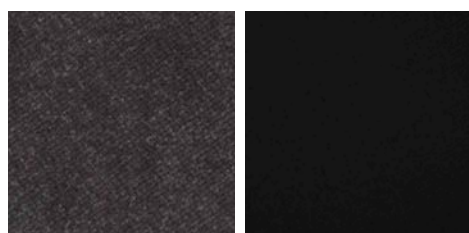
5143

5149

5142

5145

5152



5151

5147

- Composition: 100% POLYESTER - TREVIRA CS
- Abrasion: UNI EN ISO 12947-2 100.000 Cycles
- Light Resistance-Xenotest: UNI EN ISO 105-B02 ≥ 5 Blue Scale
- Fire proof: UNI 8456 - 9174 classe 1, UNI 9175 classe 11M ,EN 1021-1 EN 1021-2, BS 5852 crib 5, DIN 4102 B1, NF P 92 503-507 M1, TB 117:2013 UNI EN 13773:2004 classe 1, NFPA 701:2015
- Maintenance: Dust gently or pass the surface with a damp cloth.

Visit www.flukso.it for complete colours range / Visionate la completa gamma colori su www.flukso.it

COLOURS AND FINISHES

COLORI E FINITURE

B Blazer Fabric / Tessuto Blazer



CUZ2Z

CUZ1E

CUZ86

CUZ47

CUZ1T

CUZ2R



CUZ3D

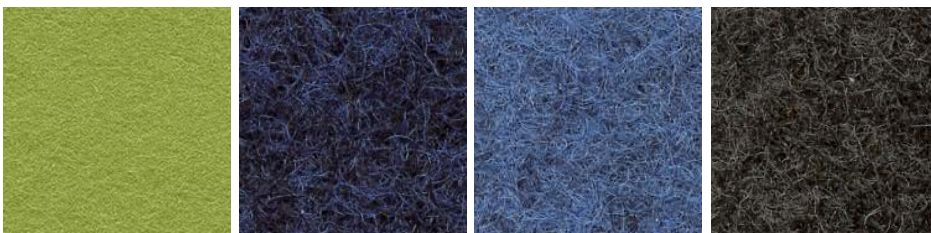
CUZ18

CUZ63

CUZ82

CUZ1N

CUZ1K



CUZ2X

CUZ62

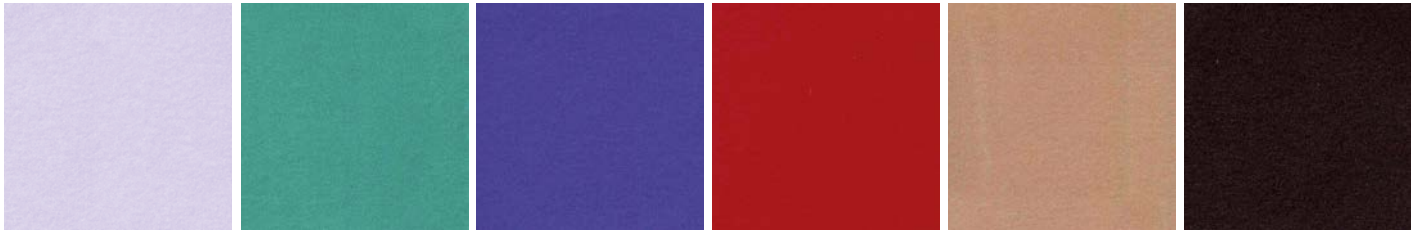
CUZ1W

CUZ67

- Composition: 100% VIRGIN WOOL
- Abrasion: BS EN ISO 12497-2 65.000 Cycle Martindale
- Light Resistance-Xenotest: UNI EN ISO 105-B02 / 5
- Fire proof: BS EN 1021 Part 1, BS EN 1021 Part 2, BS 7176 Low Hazard, BS EN 13501-1:2007 Class D, NF D 60-013 AM18, UNI 9175:2010 Class 1IM, BS476 part 7 Class 1, ONORM B 3825, IMOFTP Code (part 8)
- Maintenance: Use the vacuum-cleaner.

Visit www.camirafabrics.com for complete colours range / Visionate la completa gamma colori su www.camirafabrics.com

M Miki Fabric / Tessuto Miki



6445

6490

6713

6432

6334

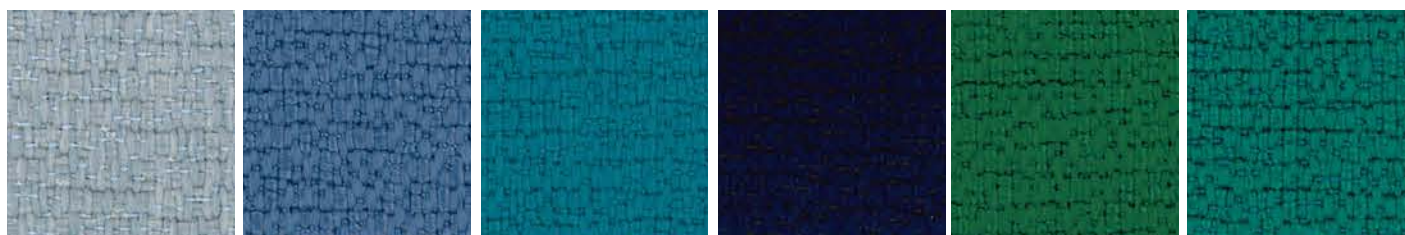
NERO

- Composition: Composizione 100% PL 65/75 g/m² – Composition 100% PL 65/75 g/m²
- Light Resistance-Xenotest: UNI EN ISO 105-B02 / 01
- Maintenance: Dust with a soft and dry cloth.

COLOURS AND FINISHES

COLORI E FINITURE

FO Fortezza 93 Fabric / Tessuto Fortezza 93



30-1

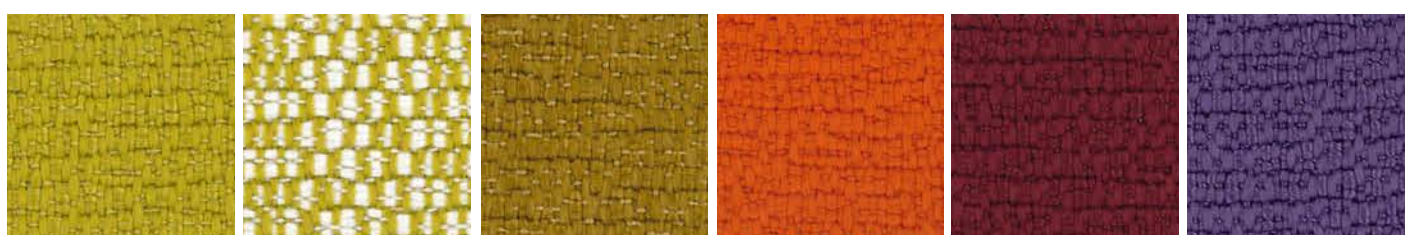
67-1

44-1

46-1

65-1

56-1



43-1

43-2

48-1

47-1

69-1

68-1



23-1

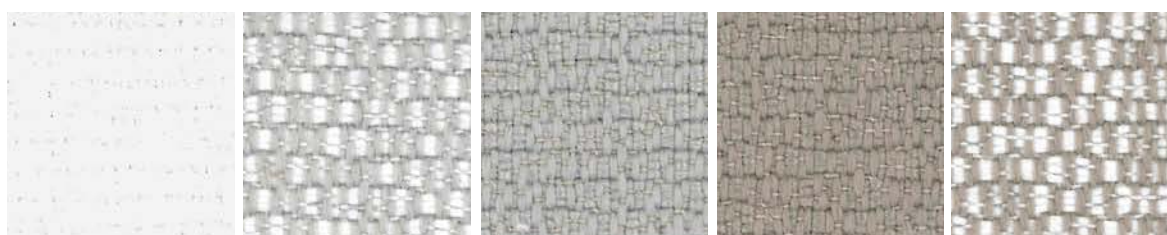
66-1

24-1

41-1

64-1

42-1



38-1

39-2

39-1

17-1

17-2

- Composition: 100% Polyolefinic
- Abrasion: UNI EN ISO 12947 35.000 rubs/cicli
- Seam slippage: BS 2543
- Pilling: UNI EN ISO 12945-2
- Colour fastness Dry Rubbing: UNI EN ISO 105-X12
- Colour fastness Wet Rubbing: UNI EN ISO 105-X12
- Light Fastness: UNI EN ISO 105-B02, UNI EN ISO 105-B04
- Colour Fastness to Sea Water: UNI EN ISO 105-E02:1996
- Colour Fastness to Chlorinated Water: UNI EN ISO 105-E03:2010
- Flammability: UNI 8456 - 9174 - CLASS 1 - ITALIAN FIRE SAFETY CLASSIFICATION - PASS, BS EN 1021.1:1994 - SOURCE 0 - CIGARETTE TEST - PASS, BS EN 1021.2:1994 - SOURCE 1 - BUTANE FLAME - PASS ON FR FOAM, T.B. 117 (2013): SECTION 1 POSITIVE, B1 ACCORDING TO DIN 4102, PART 1 (MAY 1998), NFPA 260:2013 - CLASS 1, IMO 2010 FTP CODE PART 8 - Resolution MSC 307(88) - Cigarette and Match Test, EN 13773 (2004) CLASS 1

Visit www.primafabrics.it for complete colours range / Visionate la completa gamma colori su www.primafabrics.it

GR Progarden Fabric / Tessuto Progarden



051
MEDITERRANEAN BLUE

026
PISTACHIO

028
OLIVE GREEN

012
LINEN

683
SLATE

- Composition: 100% yarn dyed acrylic
- Martindale (ISO 12947-2): 15.000 cycles
- Dimensional change after washing at 40°C and drying (warp/weft) (ISO 5077): ± 2%/0%
- Breaking strength (warp/weft) (ISO 13934-1): 200/70 daN
- Elongation at break (warp/weft) (ISO 13934-1): 25%/25%
- Tear strength (warp/weft) (ISO 13937-1): 7/3,7 daN
- Resistance to seam (warp/weft) (ISO 13935-1): 50/50 daN

- Air permeability (ISO 9237): 65 l/m²/s
- Finishing: Water repellent Teflon/Scotchgard treatment, dirt repellent and anti-mould treatment
- Spray Test (ISO 4920): 4 out of 5
- UV Colour fastness (ISO 105 B02): 5/8 out of 8
- Colour fastness to weather (ISO 105 B04): 5/8 out of 8
- Colour fastness after washing at 40°C (ISO 105 C06): 5 out of 5

Visit www.giovanardi.com for complete colours range / Visionate la completa gamma colori su www.giovanardi.com

SX Silvertex Fabric / Tessuto Silvertex



3066
BALTIC

5020
BASIL

1014
UMBER

0002
SANDSTONE

4004
ICE

4003
GRAPHITE

- Composition: 100% Vinyl / Polyester Backing
- Abrasion: >300.000 cycles Martindale (EN ISO 12947:1999 Part 2)
- UV Resistance: ISO 105 B04 ≥ 4/5 (Grey Scale), ISO 105 B02 ≥ 7/8 (Blue Wool Scale)
- Flame Retardancy: EU: EN 1021 Part 1 & 2

DE: DIN 4102 B2 ECE Regulation No.118:03 (R118.02 Annexes 6, 7 & 8), ES: UNE 23.727-90 1R/M.2, FR: NF P 92-503/M2, IT: UNI 9175 (1987) / UNI 9175/FA1 (1994)

Classe 1.1M (UNO I EMME), AT: ÖNORM B 3825, Gruppe 1 - Schwerbrennbares Verhalten, AT: ÖNORM A 3800 Teil 1, Qualmbildungsklasse Q1 - schwachqualmend, IMO FTP 2010

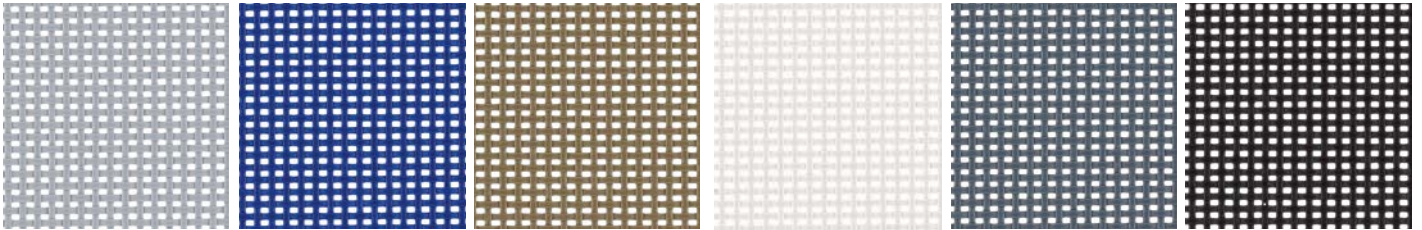
Code MSC.307 (88) Part 8 3.1 & 3.2, (MED) Marine Equipment Directive (in its current valid version), EN 71-2:2006+A1:2007 - Safety of Toys - Parte 2: Flammability, US: CAL TB 117-2013, Section E, FMVSS 302, FAR 25/853

Visit www.spradling.eu for complete colours range / Visionate la completa gamma colori su www.spradling.eu

COLOURS AND FINISHES

COLORI E FINITURE

R Mesh Fabric / Tessuto Rete



R08

R10

R09

R01

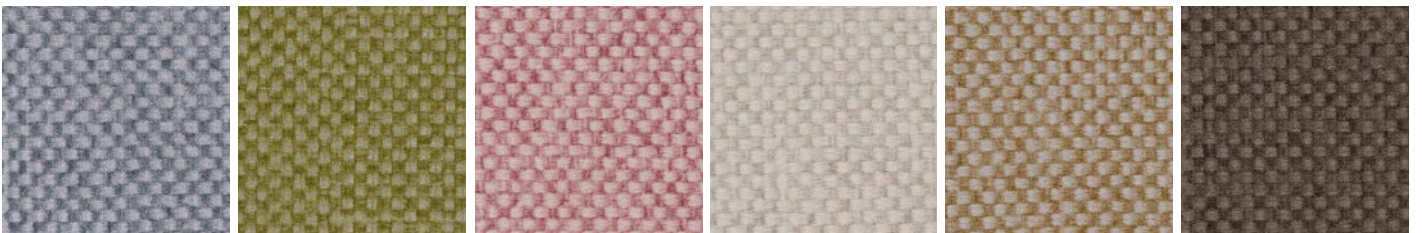
R03

R02

- Composition: Polyvinyl 70% - Polyester 30%
- Warp Tensile Strength: 310Kg/5cm
- Weft Tensile Strength: 270Kg/5cm
- Fire retardant on request

Visit www.plastitex.com for complete colours range / Visionate la completa gamma colori su www.plastitex.com

MG Maglia Vinyl Fabric / Tessuto Maglia Vinile



0003

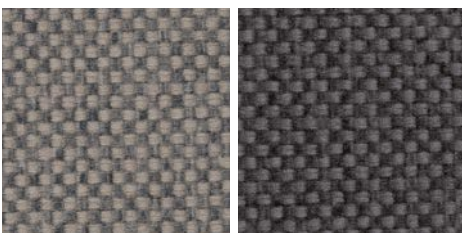
0406

4203

5001

6025

4537



1702

6016

- Composition: Vynil 100%
- Abrasion: >100.000 cycles Martindale (EN ISO 12947:1999 Part 2)
- Fire Proof: EN 1021 Part 1 & 2, UNE 23.727-90 1R/M.2, NF P 92-503/M2, DIN 4102 B2, UNI 9175 (1987) / UNI 9175/FA1 (1994) Classe 1.IM (UNO I EMME), ÖNORM B 3825, Gruppe 1 - Schwerbrennbares Verhalten, ÖNORM A 3800 Teil 1, Qualmbildungsklasse Q1 - schwachqualmend, IMO FTP 2010 Code MSC.307 (88) Part 8 3.1 & 3.2, FMVSS 302, US: FAR 25/853, (MED) Marine Equipment Directive (in its current valid version), ECE R118.02 (replaces Directive 95/28/CE) Annexes 6, 7 & 8, EN 71-2:2006+A1:2007 - Safety of Toys - Parte 2: Flammability, CAL TB 117-2013, Section E
- Light Resistance: UV-Resistance XENOTEST DIN 54004/ NTC 1479

Visit www.spradling.eu for complete colours range / Visionate la completa gamma colori su www.spradling.eu

E Simil leather Aurea / Ecopelle Aurea



23

7

14

15

16

8



9

10

17

19

21

11



2

3

5

6



1

22

28

26

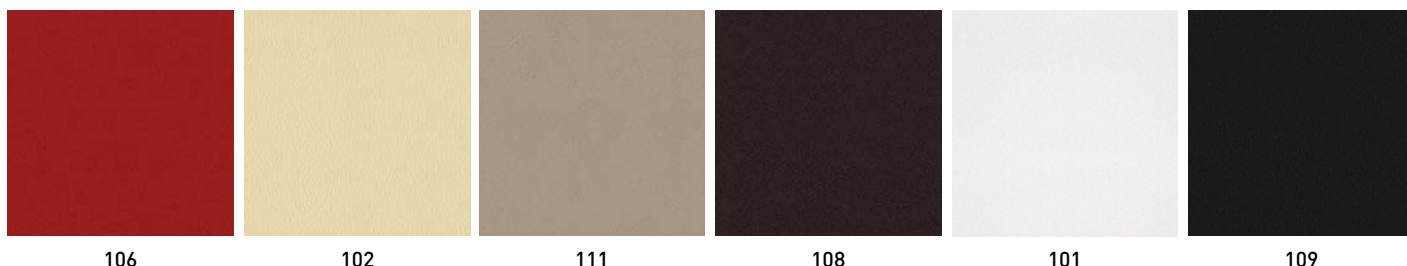
- Composition: 72% PVC - 3% PU - 25% COTTON
- Abrasion: EN ISO 5470-2 100.000 Cycle Martindale
- Light Resistance-Xenotest: UNI EN ISO 105-B02 / 6
- Fire proof: UNI 9175 classe 1IM, EN 1021-1, EN 1021-2, BS 5852-1 cigarette test, BS 5852-1 match test BS 5852 crib 5, TB 117:2013, IMO res. A.652(16)
- Maintenance: Dust gently or pass the surface with a damp cloth.

Visit www.flukso.it for complete colours range / Visionate la completa gamma colori su www.flukso.it

COLOURS AND FINISHES

COLORI E FINITURE

C Leather / Cuoio



- Composition: 100% Grain Leather, Italian tannery
- Light Resistance: IUF/101
- Fire proof: CAL TB 117-00, Section E -part 1; BS 5852/90 section 4 (CRIB 5); UNI 91/75 Classe 2IM
- Maintenance: Dust gently or pass the surface with a damp cloth.

P Leather / Pelle



- Composition: 100% Top Grain Leather, European tannery
- Light Resistance-Xenotest: UNI EN ISO 105-B02
- Fire proof: British Standard BS 5852 Part 1 (1979), Imo FTP:Part 8-Resolution A.652 (16), TB 117-A11@20132013 Cigarette Test (California)
- Maintenance: Dust with a soft and dry cloth.

Visit www.anicaleather.com for complete colours range / Visionate la completa gamma colori su www.anicaleather.com