

INTERRA

ALMA


FABRICS & FINISHES

ALMA

RIVESTIMENTI MATERIALS REVÊTEMENTS

Categoria A

category A / categorie A


SPALMATO  Antifiamma / Flame retardant / Résistant au feu

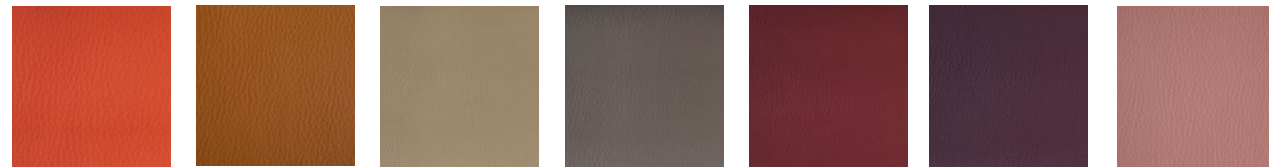


TE08 TE11 TE67 TE69 TE70 TE71 TE72

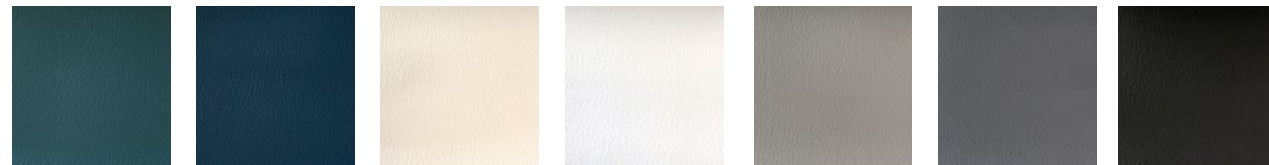


TE73 TE77 TE78 TE79 TE80


TOUCH  Antifiamma / Flame retardant / Résistant au feu



ABFP0108 ABFP015796 ABFP016783 ABFP015800 ABFP015804 ABFP0120 ABFP0115

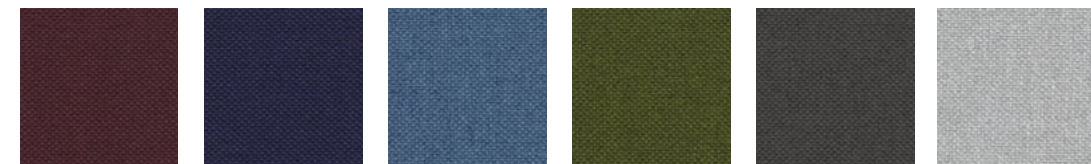


ABFP0114 ABFP0125 ABFP016747 ABFP0101 ABFP016777 ABFP016791 ABFP0116

KING L KAT  Antifiamma / Flame retardant / Résistant au feu




FDVKK1008 FDVKK1012 FDVKK2007 FDVKKLK3005 FDVKK3082 FDVKK4021 FDVKK4032



FDVKK5001 FDVKK6052 FDVKK6091 FDVKK7022 FDVKK8011 FDVKK8032

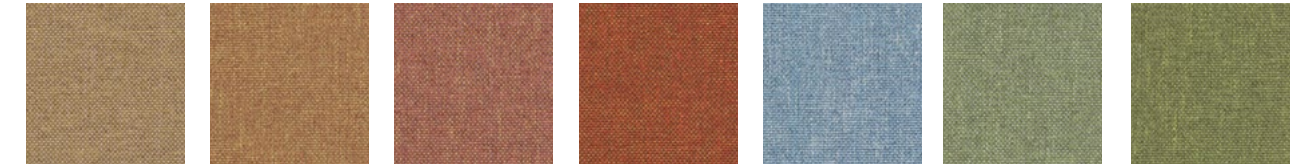
Categoria A

category A / categorie A

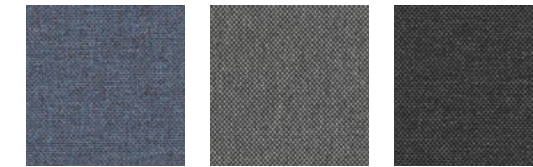
ROCCIA  Antifiamma / Flame retardant / Résistant au feu



FDVRC1502 FDVRC1504 FDVRC2504 FDVRC6508 FDVRC4505 FDVRC4504 FDVRC4502



FDVRC3506 FDVRC3502 FDVRC5504 FDVRC4501 FDVRC6501 FDVRC7504 FDVRC7501

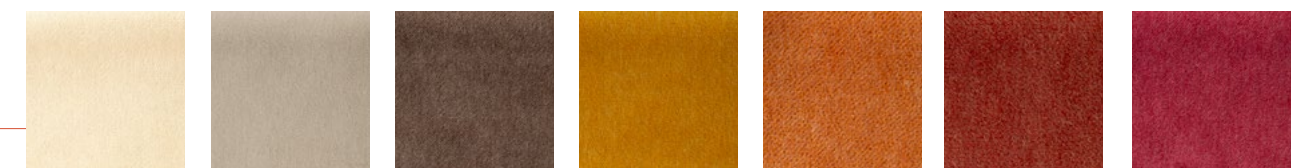


FDVRC6504 FDVRC8502 FDVRC8504

Categoria B

category B / categorie B

STONE VELVET  Antifiamma solo CAL 117 / Flame retardant only CAL 117 / Résistant au feu qu'au CAL 117



ERMSVA1501 ERMSVA1502 ERMSVA1505 ERMSVA1507 ERMSVA1508 ERMSVA1510 ERMSVA1511



ERMSVA1512 ERMSVA1513 ERMSVA1515 ERMSVA1516 ERMSVA1517 ERMSVA1518 ERMSVA1520

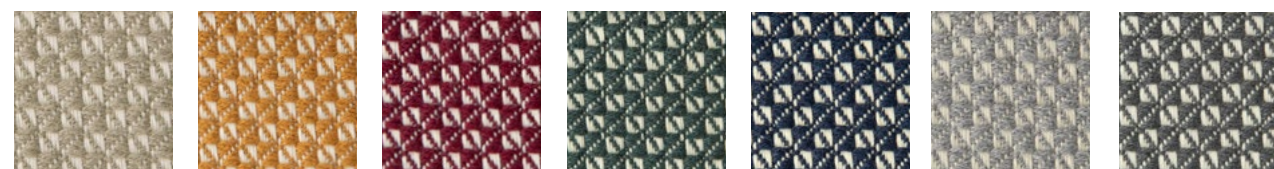


ERMSVA1521 ERMSVA1522 ERMSVA1524

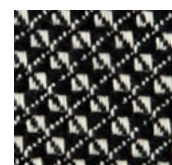
Categoria C

category C / categorie C

ORIGAMI  Antifiamma solo CAL 117 / Flame retardant only CAL 117 / Résistant au feu qu' au CAL 117

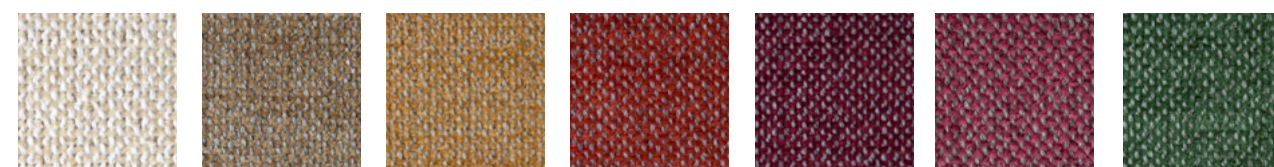


ERMOR1601 ERMOR1603 ERMOR1604 ERMOR1605 ERMOR1609 ERMOR1611 ERMOR1612

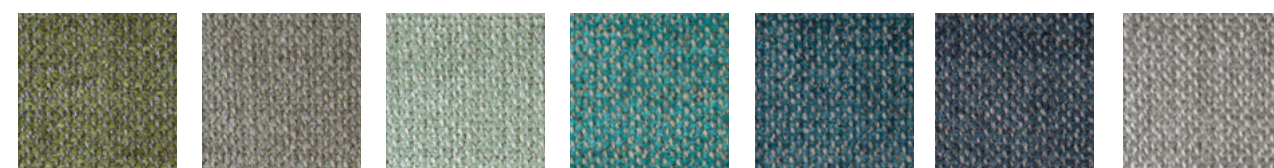


ERMOR1613

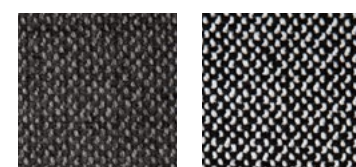
JOJO



ERMJJA1401 ERMJJA1405 ERMJJA1406 ERMJJA1408 ERMJJA1409 ERMJJA1411 ERMJJA1413




ERMJJA1414 ERMJJA1417 ERMJJA1420 ERMJJA1422 ERMJJA1423 ERMJJA1424 ERMJJA1426

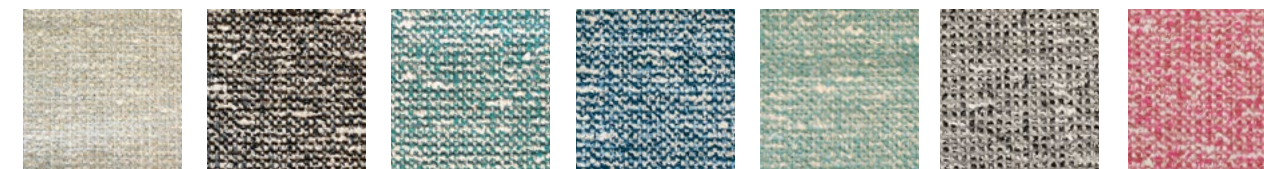


ERMJJA1428 ERMJJA1431


Categoria C

category C / categorie C

CAPRI  Antifiamma / Flame retardant / Résistant au feu



ABG17602 ABG17606 ABG17608 ABG17610 ABG17611 ABG17617 ABG17613

VELLUTO LUNA  Antifiamma / Flame retardant / Résistant au feu



TE188 TE191 TE192 TE199 TE202 TE205 TE206




TE207 TE208 TE209 TE210 TE214 TE216 TE217

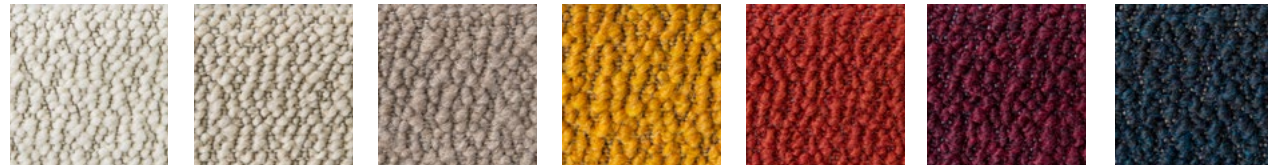


TE218 TE219 TE220 TE222 TE223 TE225 TE226

Categoria D

category D / categorie D

PLUSH  Antifiamma solo CAL 117 / Flame retardant only CAL 117 / Résistant au feu qu' au CAL 117

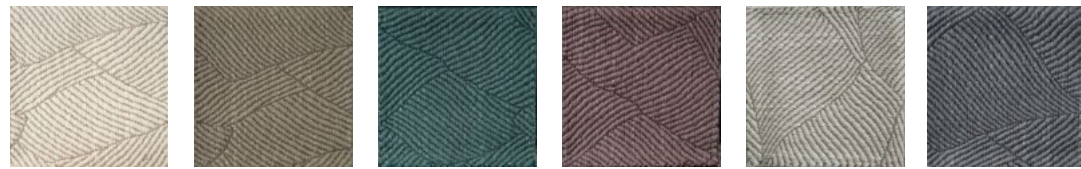


ERMPLA1900 ERMPLA1901 ERMPLA1902 ERMPLA1904 ERMPLA1905 ERMPLA1906 ERMPLA1908



ERMPLA1909 ERMPLA1913 ERMPLA1914 ERMPLA1915 ERMPLA1916 ERMPLA1917 ERMPLA1918


TZUNAMI



ERMTZA100 ERMTZA102 ERMTZA105 ERMTZA106 ERMTZA107 ERMTZA108

Categoria E

category E / categorie E

HERO  Antifiamma / Flame retardant / Résistant au feu



KVHR191 KVHR181 KVHR141 KVHR151 KVHR751 KVHR701 KVHR791




KVHR901 KVHR931 KVHR991 KVHR101 KVHR211 KVHR231 KVHR311



KVHR511 KVHR541 KVHR551 KVHR681 KVHR451 KVHR441 KVHR981

Categoria PE

category PE / categorie PE

PELLE MIAMI  Antifiamma / Flame retardant / Résistant au feu



ICAMI1000 ICAMI1005 ICAMI1011 ICAMI1013 ICAMI2001 ICAMI2006 ICAMI2007



ICAMI2010 ICAMI4001 ICAMI4100 ICAMI4020 ICAMI4011 ICAMI5020 ICAMI5010



ICAMI8004 ICAMI9000

Aspirare e lavare a secco.
Vacuuming and dry cleaning.
Aspirer et nettoyage à sec.

 No antifiamma / No Flame retardant / No Résistant au feu

CATEGORIA E
category E / categorie E

HERO, Design Patricia Urquiola

COMPOSIZIONE / Composition /
Composition

96% LANA VERGINE, 4% NYLON
96% virgin wool 4% nylon
96% laine vierge 4% nylon

RESISTENZA ALL'ABRASIONE /
Abrasion martindate / Résistance à
l'abrasion (Martindale)

45.000 cicli / cycles / cycles

H

140 cm

PESO / Weight / Poids

580 gr/mtl

NORMATIVE / Certification /
Certification

BS 5852 Crib 5 with treatment
BS 5852 part 1
DIN 4102 B2
EN 1021-1 / 2
IMO FTP Code 2010 Part 8
NF D 60 013
SN 198 898 5.3 with treatment
UNI 9175 1IM
US Cal. Bull. 117-2013
AS / NZS 3837, class 2

RESISTENZA ALLA LUCE / Light
resistance / Résistance à la lumière


6

PILLING

3-4 (ISO 1-5)

PULIZIA / Cleaning / Nettoyage

Aspirare e lavare a secco. Evitare l'uso del vapore
Vacuuming and dry cleaning. Avoid using steam.
Aspirer et nettoyage à sec. Éviter l'usage de la vapeur.

 Antifiamma / Flame retardant / Résistant au feu

CATEGORIA PE
category PE / categorie PE

PELLE MIAMI

COMPOSIZIONE / Composition /
Composition

PIGMENTATO, TINTURA ALL'ANILINA
PASSANTE. / Pigmented, through dyeing aniline.
PELLE BOVINA DI ORIGINE EUROPEA/Bovine of
European origin

RESISTENZA ALL'ABRASIONE /
Abrasion martindate / Résistance à
l'abrasion (Martindale)

50.000 cicli / cycles / cycles

TAGLIA MEDIA / average size

5,0 m²

SPESSORE / Thickness / Poids

1,0-1,2mm

NORMATIVE / Certification /
Certification

UNI EN ISO 1021-1, UNI EN ISO 1021-2
Conforme / No ignition
BS 5852 PART 1 (Source 0 and Source 1)
Conforme / No ignition
California TB 117:2013 Conforme / Complies

FTP CODE 2010 PART 8 (ex IMO A652 (16))
Conforme / Complies
L'articolo è prodotto nel rispetto della normativa
REACH.
The leather is processed in conformity with
REACH regulations.

TEST SOLIDITÀ DEL COLORE / COLOR
FASTNESS

Solidità colore allo strofinio a secco UNI EN ISO
11640 Scala dei grigi 1000 Cicli ≥ 4
Dry rub fastness Grey Scale 1000 Cycles

Solidità colore allo strofinio a umido UNI EN ISO
11640 Scala dei grigi 250 Cicli ≥ 4
Wet rub fastness Grey Scale 250 Cycles

Solidità colore allo strofinio con sudore alcalino
UNI EN ISO 11640 Scala dei grigi 80 Cicli ≥ 4
Alkaline perspiration rub fastness Grey Scale 80
Cycles

Solidità del colore alla luce artificiale UNI EN ISO
105-B02 Scala dei blu ≥ 6
Light fastness Blue Scale

Solidità del colore alla goccia d'acqua UNI EN ISO
15700 Scala dei grigi ≥ 3
Colour fastness to water spotting Grey Scale

TEST FISICI / physical characteristics

Resistenza alla flessione UNI EN ISO 5402 20.000
Cicli Nessuna rottura

Flexing endurance 20.000 Cycles No cracks
Resistenza allo strappo UNI EN ISO 3377-1 N ≥ 20

Tear resistance

Adesione della rifinitura UNI EN ISO 11644
N/10mm ≥ 4

Adhesion of finishing

PULIZIA / Cleaning / Nettoyage

Per la pulizia ordinaria spolverare il rivestimento
in pelle con un panno bianco pulito, asciutto non
abrasivo. Per lo sporco secco spazzolare con
delicatezza utilizzando una spazzola con setole
morbide. Evitare il contatto con solventi, smalti,
vernici, colle. In caso di versamento accidentale
di sostanze oleose o bevande, rimuovere
delicatamente la macchia dalla superficie con
carta assorbente, evitando di fare pressione in
modo che lo sporco non penetri nei pori della
pelle. Successivamente con un panno pulito,
imbevuto di una soluzione di sapone neutro molto
diluito, strofinare delicatamente la macchia.
Asciugare immediatamente la zona con un panno
asciutto. Non asciugare la pelle alla luce del sole o
con l'asciugacapelli. Prima di utilizzare qualunque
prodotto di pulizia verificarne l'effetto su una zona
nascosta.

For the normal cleaning, dust the leather coat with
a non abrasive dry clean white cloth. To remove
dry soilings, brush gently with soft brush. Avoid
contact with solvents, nail-polish, paints and glue.
In case of accidental contact with oils or liquids,
gently remove the spot from the surface with an
absorbent paper, avoid pressure that would make
the liquid penetrate into the leather pores. Then
with a clean cloth and a diluted solution of water
and soap, gently rub the spot. Dry immediately
with a dry cloth. Do not dry the leather by
exposing it to the sun light or by using a hairdryer.
Before using any cleaning products, verify the
effect in a hidden area.

ALMA

FINITURE FINISHES FINITIONS

FINITURE POLIPROPILENE . POLIETILENE
polypropylene . polyethylene / polypropylene . polyethylene



A ANTRACITE
anthracite
anthracite

B BIANCO
white
blanc

BS BLU SMERALDO
emerald blue
bleu smeraude

BV BLU VIOLA
violet blue
violet bleu

C CIPRIA
powder pink
rose poudre

GA GIALLO AMBRA
amber yellow
jaune ambre

N NERO
black
noir



O ARANCIO
orange
orange

RC ROSSO CILIEGIA
cherry red
Rouge cerise

R2 ROSSO MATTONE
brick red
rouge brique

S SABBIA
sand
sable

VB VERDE BOSCO
dark green
vert forêt

VX VIOLA BORDEAUX
violet bordeaux
violet bordeaux

FINITURE POLICARBONATO
polycarbonate finishes / finition polycarbonate

*si sconsiglia l'esposizione alla salsedine
*not recommended exposure to saltiness
*Exposition en bord de mer ou en localités a très haute salinité déconseillée



F FUMÈ
fumè
fumè

YT GIALLO
yellow
jaune

RT ROSSO
red
rouge

T TRASPARENTE
transparent
transparent

FINITURE NYLON *



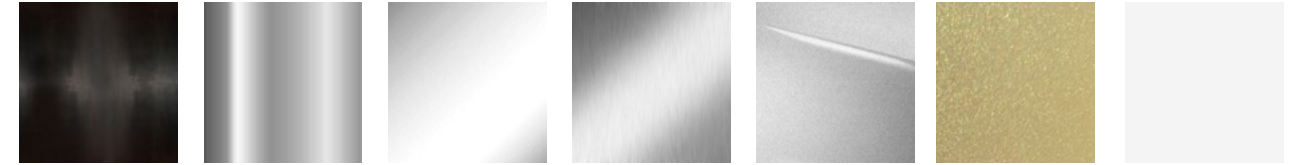
B BIANCO LUCIDO
white polished
blanc brillant

N NERO LUCIDO
black polished
noir brillant

RP ROSSO POMPEIANO
LUCIDO
pompeian red
polished
rouge pompéi
brillant

FINITURE METALLI *

Verniciatura poliester
Polyester painted / Verni polyester



CE CALAMINA
calamine
calamine

CR CROMATO
chromed
chrome

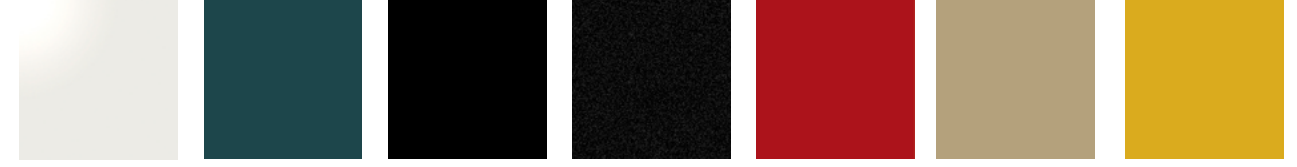
IL INOX LUCIDO
inox polished
inox brillant

IS INOX SATINATO
inox satinized
inox satin

VA VERNICIATO ALLUMINIO
aluminium painted
verni aluminium

VAG BRONZO
bronze
bronze

VB VERNICIATO BIANCO
painted white
verni blanc



VB1 VERNICIATO BIANCO PURO LUCIDO
pure white polished
painted
verni blanc absolu
brillant

VEB VERNICIATO VERDE BOSCO
darck green
painted
verni vert forêt

VN VERNICIATO NERO LUCIDO
black polished
painted
verni noir brillant

VNO VERNICIATO NERO
black polished
verni noir

VR VERNICIATO ROSSO
red painted
verni rouge

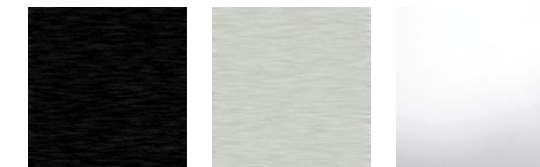
VS VERNICIATO SABBIA
sand painted
verni sable

VSE VERNICIATO SENAPE
mustard painted
verni moutarde



VT VERNICIATO ANTRACITE
anthracite painted
verni anthracite

FINITURE ALLUMINIO
aluminium finishes / finitions aluminium



AU01 NERO
black
noir

AU02 GRIGIO
grey
gris

AU09 LUCIDO
polished
brillant

FINITURE LEGNI & MDF

wood & mdf finishes / finitions bois & mdf



I NOSTRI LEGNI SONO CERTIFICATI PEFC: tale marchio attesta che i legni utilizzati per la produzione rispondono a determinati requisiti di sostenibilità e gestione forestale responsabile.
 OUR WOODS ARE PEFC CERTIFIED: this label certifies that the woods we use in production meet specific requirements of "sustainability" and responsible forest management.
 NOS BOIS SONT CERTIFIÉS PEFC, qui en atteste la provenance depuis des forêts à gestion éco responsable

						
CA ABETE CARBONIZZATO pinewood burnt bois de épicéa avec traitement brûlé	LE01 ROVERE oak rouvre	LE03 WENGÈ wengè wengè	LE05B LACCATO BIANCO FREDDO Cold white laquered blanche froide laqué	LE07 LACCATO NERO black laquered laqué noir	LE11 FRASSINO NATURALE ash frêne naturel	LE12 FRASSINO COLOR NOCE ash stained walnut frêne noyer
						
LE16 FRASSINO TINTO NERO ash stained black frêne timenté noir	LE18 LACCATO SABBIA sand laquered laqué sable	LE19 LACCATO ANTRACITE anthracite laquered laqué anthracite	LE22 FAGGIO NATURALE natural beech hêtre naturel	LE23 FAGGIO NOCE walnut beech hêtre noyer	LE24 FAGGIO NERO black beech hêtre noir	LE25 LACCATO GRIGIO GHIAIA pebble grey laquered laqué gris gravier
						
LE26 LACCATO ROSSO OSSIDO red oxyde laquered laqué rouge oxyde						

FINITURE HPL *

hpl finishes / finitions hpl

					
HB BIANCO white blanc	HL ALLUMINIO aluminium aluminium	HN NERO black noir	HR ROSSO red rouge	HS SABBIA sand sable	HB BIANCO white blanc

FINITURE SOLID CORE *

solid core finishes / finitions solid core *

FINITURE LAMINATO & NOBILITATO

laminated & melamine finishes / finition laminé & anobli

					
B BIANCO white blanc	C GRIGIO CHIARO light grey gris clair	L ALLUMINIO aluminium aluminium	N NERO black noir	OG OLMO GRIGIO SCURO dark grey olmo olmo gris foncé	R ROVERE oak rouvre
					
RG ROVERE GRIGIO grey oak rouvre gris	T ANTRACITE anthracite anthracite	W WENGÈ wengè wengè			

FINITURE MARMO

marble finishes / finitions marbre

***LA TONALITÀ DELLE SUPERFICI IN PIETRA NATURALE PUÒ VARIARE SU OGNUNO DEI PEZZI PRODOTTI/
 the nuance of the surfaces in natural stone change on every piece produced / la tonalité des surfaces en marbre peut varier sur
 chacune des pièces produites

	
MCL MARMO CARRARA LUCIDO polished carrara marble carrara marble poli	MNM NERO DI MARQUINA black marquina noir marquina

RESINE *

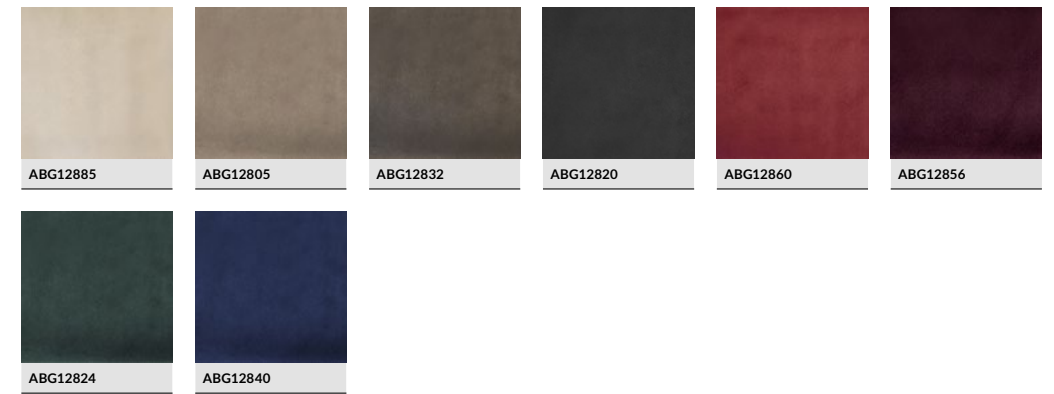
metal finishes / finitions métaux

					
B BIANCO white blanc	M MARMO marble marmbre	N NERO black noir	PA PALISSADE BLANC palissade blanc palissade blanc	T ANTRACITE anthracite anthracite	WR WENGÈ wengè wengè

ALMA

RIVESTIMENTI IN ELIMINAZIONE
MATERIALS IN LOW STOCK
REVÊTEMENTS JUSQU' À ÉPUISEMENT DU STOCK

EVOLUTION G128



EVOLUTION G163



MAPLE



REMIX (LANA)



MELANGE NAP



VELLUTO DI LINO



OMBRA



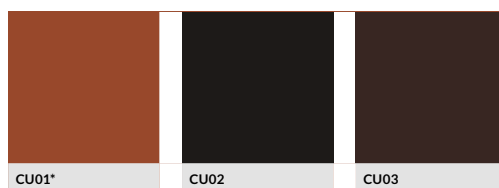
LUCHINO



CUOJETTO

hard leather / cuir

*COLORE IN ESAURIMENTO
SU RICHIESTA
available on request
disponible sur demande



EVOLUTION G128

COMPOSIZIONE / Composition /
Composition

100% POLIESTERE
100% polyester
100% polyester

RESISTENZA ALL'ABRASIONE /
Abrasion martindate / Résistance à
l'abrasion (Martindale)

>100.000 cicli / cycles / cicles

H

140 cm

PESO / Weight / Poids

355 gr/mq

RESISTENZA ALLA LUCE / Light
resistance / Résistance à la lumière

4-6

PILLING

5

PULIZIA / Cleaning / Nettoyage

lavaggio a 30°, pulire a secco, stiratura al contrario,
non candeggiare, non asciugare a tamburo.

Wash at 30°, dry clean, reverse straight, do not
tumble dry, do not treat with chlorine.

Laver à 30°, nettoyer à sec avec précaution, ne pas
centrifuger, ne pas blanchir.

✘ No antifiamma / No Flame retardant / No Résistant au feu

REMIX (LANA) Design: Giulio Ridolfo

COMPOSIZIONE / Composition /
Composition

90% LANA VERGINE PETTINATA, 10% NYLON
90% worsted new wool, 10% nylon
90% laine vierge peignée, 10% nylon

RESISTENZA ALL'ABRASIONE /
Abrasion martindate / Résistance à
l'abrasion (Martindale)

100.000 cicli / cycles / cicles

H

138 cm

NORMATIVE / Certification /
Certification

AS / NZS 1530.3

AS / NZS 3837, class 2

BS 5852 part 1

EN 1021-1 / 2

IMO FTP Code 2010 Part 8

NF D 60 013

NFPA 260

UNI 9175 11M

US Cal. Bull. 117-2013

ÖNoRM B1 / Q1

BS 5852 Crib 5 con trattamento / with treatment

/ avec traitement

RESISTENZA ALLA LUCE / Light
resistance / Résistance à la lumière

5-7 (ISO 1-8)

PULIZIA / Cleaning / Nettoyage

Non spazzolare e usare regolarmente
l'aspirapolvere. Lavaggio a secco.

Do not brush and use the vacuum-cleaner
regularly. Dry clean.

Ne pas se brosser et utiliser régulièrement un
aspirateur. Nettoyage à sec.

✘ Antifiamma / Flame retardant / Résistant au feu

MAPLE, Design Åsa Pärson

COMPOSIZIONE / Composition /
Composition

81% VISCOSA, 15% LINO, 4% POLIESTERE
81% Viscose, 15% Linen, 4% Polyester
81% viscose 15% lin 4% polyester

RESISTENZA ALL'ABRASIONE /
Abrasion martindate / Résistance à
l'abrasion (Martindale)

30.000 cicli / cycles / cicles

H

140 cm

PESO / Weight / Poids

850 gr/mtl

NORMATIVE / Certification /
Certification

EN 1021-1 / 2

BS 5852 part 1

IMO FTP Code 2010 Part 8

RESISTENZA ALLA LUCE / Light
resistance / Résistance à la lumière

5-7 (ISO 1-8)

PILLING

4-5 (ISO 1-5)

PULIZIA / Cleaning / Nettoyage

Aspirare e lavare a secco. Evitare l'uso del vapore.

Vacuuming and dry cleaning. Avoid using steam.

Aspirer et nettoyer à sec. Éviter l'usage de la vapeur.

✘ Antifiamma / Flame retardant / Résistant au feu

EVOLUTION G163

COMPOSIZIONE / Composition /
Composition

100% POLIESTERE con accoppiatura in cotone e
imbottitura in dracon siliconato
100% polyester combined with cotton and dracon
foam

100% tissu polyester couplé avec coton u dracon
mousse

RESISTENZA ALL'ABRASIONE /
Abrasion martindate / Résistance à
l'abrasion (Martindale)

>15.000 cicli / cycles / cicles

H

140 cm

PESO / Weight / Poids

475 gr/mq

RESISTENZA ALLA LUCE / Light
resistance / Résistance à la lumière

4-5

PILLING

4-5

PULIZIA / Cleaning / Nettoyage

Lavaggio a 30°, pulire a secco, stiratura al
contrario, non candeggiare, non asciugare a
tamburo.

Wash at 30°, dry clean, reverse straight, do not
tumble dry, do not treat with chlorine.

Laver à 30°, nettoyer à sec avec précaution, ne pas
centrifuger, ne pas blanchir.

✘ No antifiamma / No Flame retardant / No Résistant au feu

MELANGE NAP, Design Akira Minagawa

COMPOSIZIONE / Composition /
Composition

97% LANA VERGINE PETTINATA 3% NYLON
97% worsted virgin wool 3% nylon
97% laine vierge 3% nylon

RESISTENZA ALL'ABRASIONE /
Abrasion martindate / Résistance à
l'abrasion (Martindale)

60.000 cicli / cycles / cicles

H

140 cm

PESO / Weight / Poids

440 gr / mtl

NORMATIVE / Certification /
Certification

BS 5852 Crib 5 with treatment

BS 5852 ignition source 3

EN 1021-1 / 2

IMO FTP Code 2010:Part 8

NF D 60 013

UNI 9175 11M

US Cal. Bull. 117-2013

RESISTENZA ALLA LUCE / Light
resistance / Résistance à la lumière

6 (ISO 1-8)

PILLING

3 (ISO 1-5)

PULIZIA / Cleaning / Nettoyage

Aspirare e lavare a secco. Evitare l'uso del vapore.

Vacuuming and dry cleaning. Avoid using steam.

Aspirer et nettoyer à sec. Éviter l'usage de la vapeur.

✘ Antifiamma / Flame retardant / Résistant au feu

VELLUTO DI LINO G105

COMPOSIZIONE / Composition /
Composition

58% COTONE, 42% LINO

58% cotton 42% linen

58% coton 42% lin

RESISTENZA ALL'ABRASIONE /
Abrasion martindate / Résistance à
l'abrasion (Martindale)

20.000 cicli / cycles / cicles

H

140 cm

PESO / Weight / Poids

614 gr/mq

RESISTENZA ALLA LUCE / Light
resistance / Résistance à la lumière

5

PILLING

4-5

PULIZIA / Cleaning / Nettoyage

Lavaggio a 40°, pulire a secco, stiratura leggera,
non candeggiare, non asciugare a tamburo.

Wash at 40°, dry clean, light ironing, do not treat
with chlorine, do not tumble dry.

Lavage à 40°, nettoyer à sec, repassage léger, ne pas
blanchir, ne pas essuyer au tambour.

✘ No antifiamma / No Flame retardant / No Résistant au feu

OMBRA

COMPOSIZIONE / Composition /
Composition

100% COTONE

100% cotton

100% coton

RESISTENZA ALL'ABRASIONE /
Abrasion martindate / *Résistance à l'abrasion (Martindale)*

60.000 cicli / cycles / *cicles*

H

140 cm

PESO / Weight / *Poids*

590 gr/mtl

RESISTENZA ALLA LUCE / Light
resistance / *Résistance à la lumière*

3

PULIZIA / Cleaning / *Nettoyage*

Non lavare, non stirare, solo pulizia a secco
professionale.

Do not wash, Do not iron. Professional dry clean
only P-fine.

*Ne pas laver, ne pas repasser, propreté seule à sec
professionnel.*

LUCHINO

COMPOSIZIONE / Composition /
Composition

18% COTONE, 13% POLIESTERE, 69% VISCOSA

69% viscose, 18% cotton, 13% polyester

69% viscose, 18% coton, 13% polyester

RESISTENZA ALL'ABRASIONE /
Abrasion martindate / *Résistance à l'abrasion (Martindale)*

35.000 cicli / cycles / *cicles*

H

135 cm

PESO / Weight / *Poids*

750 gr/mtl

RESISTENZA ALLA LUCE / Light
resistance / *Résistance à la lumière*

4/5

PILLING


4

PULIZIA / Cleaning / *Nettoyage*

Non lavare, non stirare, solo pulizia a secco
professionale.

Do not wash, Do not iron. Professional dry clean
only P-fine.

*Ne pas laver, ne pas repasser, propreté seule à sec
professionnel.*

 No antifiamma / No Flame retardant / No *Résistant au feu*

CUOINETTO, 100% BOVINO CONCIATO AL

CROMO, FINITURA PIGMENTATA

Hard leather, 100% bovine chrome tanning,
pigment finishing

*Cuir, 100% Bovins tannés au chrome, finition
pigmentée*

RESISTENZA ALL'ABRASIONE /
Abrasion martindate / *Résistance à l'abrasion (Martindale)*

20.000 cicli / cycles / *cicles*

RESISTENZA ALLA LUCE / Light
resistance / *Résistance à la lumière*

4-5

PULIZIA / Cleaning / *Nettoyage*

Spolverare delicatamente e in caso di macchie
lievi passare la superficie con un panno umido
in microfibra o con una soluzione di detergente
neutro, risciacquando con acqua.

Non usare cera, smacchiatori o solventi.

Dust gently and in case of light stains clean the
surface using a microfiber damp cloth or a neutral
detergent solution, rinse with water afterwards.
Never use polish, stain removers or solvents.

*Essuyez doucement et dans le cas de petites taches
essuyez la surface avec un chiffon microfibre humide
ou avec une solution de détergent doux, rincer avec de
l'eau. N'utilisez pas de cire ou de solvant detachant.*

 Antifiamma / Flame retardant / *Résistant au feu*

ALMA

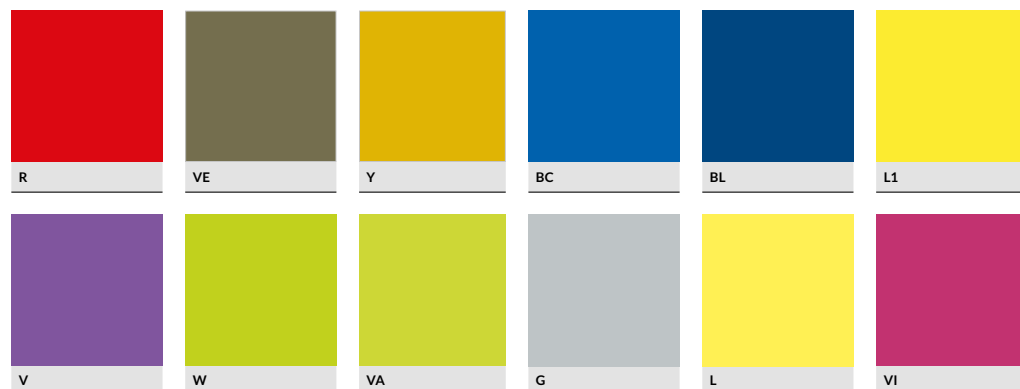
CUOIO

COMPOSIZIONE / Composition /
Composition

FINITURE IN ELIMINAZIONE
FINISHES IN LOW STOCK
FINITION JUSQU' À ÉPUISEMENT DU STOCK

POLIPROPILENE . POLIETILENE . HIREK

polypropylene . polyethylene . hirek finishes / polypropylene . polyethylene . hirek



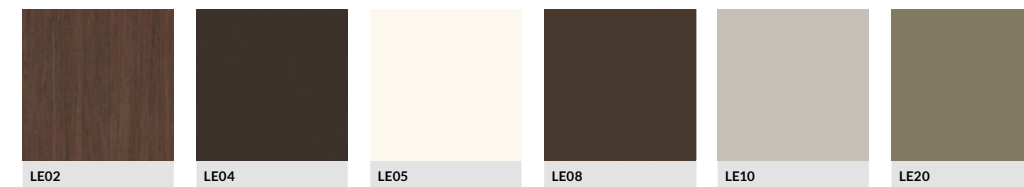
FINITURE LEGNI & MDF

wood & mdf finishes / finitions bois & mdf

I NOSTRI LEGNI SONO CERTIFICATI PEFC: tale marchio attesta che i legni utilizzati per la produzione rispondono a determinati requisiti di sostenibilità e gestione forestale responsabile.

OUR WOODS ARE PEFC CERTIFIED: this label certifies that the woods we use in production meet specific requirements of "sustainability" and responsible forest management.

NOS BOIS SONT CERTIFIES PEFC, qui en atteste la provenance depuis des forets a gestion eco responsable



FINITURE POLIURETANO

polyurethane finishes / finitions polyurethane



FINITURE HPL

hpl finishes / finitions hpl

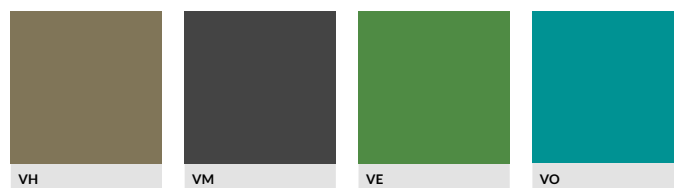


FINITURE METALLI

metal finishes / finitions métaux

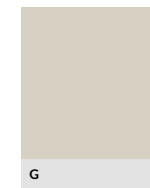


Verniciatura poliester
Polyester painted / Verni polyester



FINITURE NYLON

nylon finishes / finition nylon

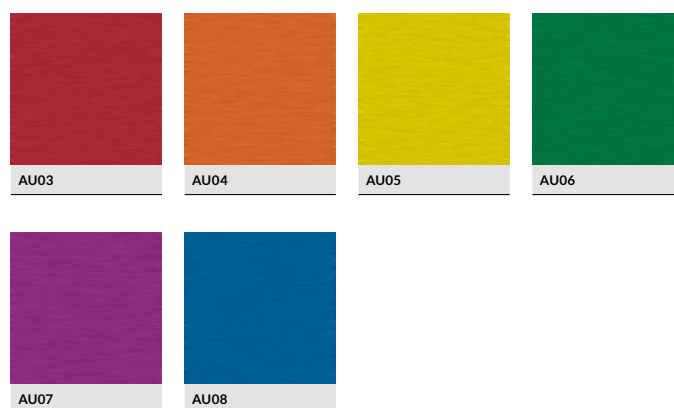


FINITURE ALLUMINIO

aluminium finishes / finitions aluminium



Anodizzazione sui colorati
Anodization for colors / Éloxage
pour les couleur



FINITURE POLICARBONATO

polycarbonate finishes / finition polycarbonate



Alma Design srl
Via P. Mazzolari, 34 - Z.I.
25050 Passirano (BS) - Italy
T +39 030.6857523
+39 030.6549908
F +39 030.6577771
info@alma-design.it

al m a - d e s i g n . i t

