

# Near Blinds Chain Motor Controller

## Mobile Version

### Character

- 1 No change of existing blinds , no tubular motor. One touch , manual to motor;
- 2 Wi-Fi connector: work with google home , Alexa amazon etc directly;
- 3 Schedule: Automate your blinds to open in the morning and close in the evening;
- 4 Long distance : Open or close your home blinds anywhere you are with the Near app ;
- 5 Easy mounting and set-up;
- 6 Control: Mobile and remote;

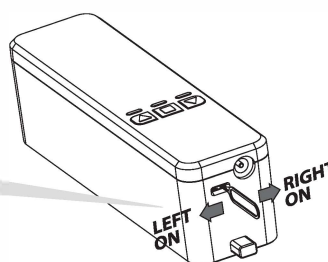


## 1 Open Motor and Choose Blinds Direction

- 1 **Open motor:** The motor will open with the mini button.
- 2 **Chain position: Left direction:** Facing blinds, chain/rope on left hand.  
**Right direction:** Facing blinds, chain/rope on right hand.
- 3 Surface up, slide mini button to left or right. light shine ;

Use the app to set direction.

**Note:** Adjust the mini buttons carefully to avoid damage .

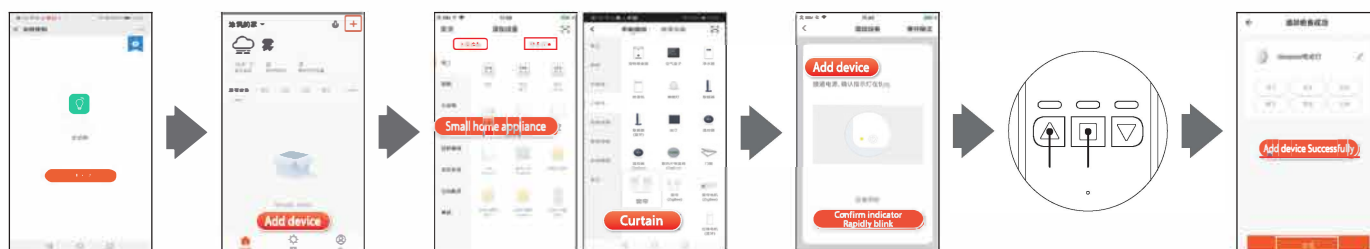


## 2 Built Connect With Mobile

- 1 Search and download "Near" in major application markets or scan the "QR code" below to download the App, [www.near.sg](http://www.near.sg)
- 2 OPEN "Near" App, and connector with motor;



Sweep Downloads APP



Open  
"Near"  
App

Press  
"Add device"  
Or "+" on upper right corner

Choose  
"Small home appliance"  
-Curtain

Mobile  
**Confirm indicator  
Rapidly blink**

Long press **"up"** and **"stop"** together 6 seconds,  
until **"blue light"** shining, point mobile **"confirm  
indicator rapidly blink"**, input your wifi address  
and password

### Note:

- 1 ) The blind will only work with the Near app after you have completed **Step 4:** TRIP SETTING.

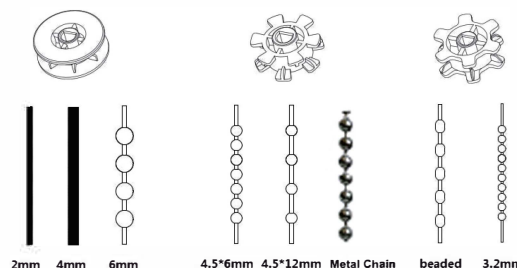
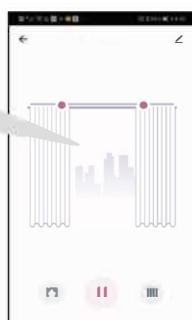


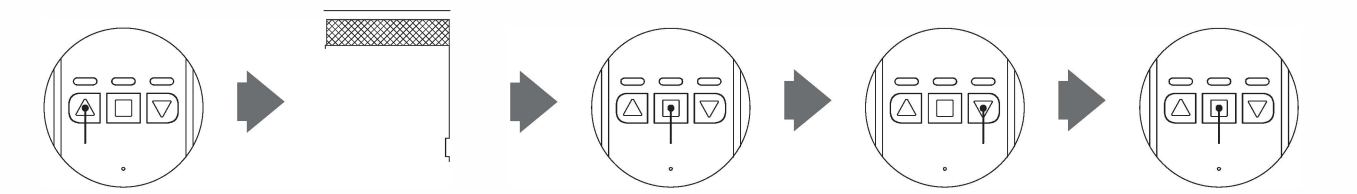
Photo 1 Suitable gear and chain

## 3 Mounting

- 1** Pull down the blinds to the similar mounting position. Put card on the bottom of chain tight chain. According the chain position, mark "L" or "R" on hole, put mounting bracket on cards position, (pls note card outside of the bottom bar)
- 2** **Installation mode 1:**  
Use the 3M tape to secure the mounting bracket on your wall. Make sure that the wall is clean and paint is not powdery nor flaky. Install the chains after 12 hours.
- 3** **Installation mode 2:**  
Align the mounting bracket vertically or horizontally and Screw them into position.
- 4** **Installation mode 2:**  
Release the cover, select the right chain head, align the blind chains to the chain head and close cover.
- 5** Tighten chain on the motor, put motor slide groove down, until motor tight on groove, pls choose suitable chain tension for stable running.

**Note:** Please use the suitable gear for the chain, and adjust the tension to avoid noise.

## 4 Trip Setting

- 
- press "up" or "down" to required high limit position;
  - high limit position (for ref)
  - Long press "stop" button 5 seconds until red light flash;
  - press down button and blinds run to the required low position
  - Press stop button, trip setting finish. (Can also setting from low limit position to high limit position).

## 5 Function Setting

- 1 Schedule:** Use the Near App to create schedules for your blinds to open and close automatically.

### Step 2:

Device added successfully → More → Schedule


- 2 Voice control**

Near → Welcome home → upper right corner

- 3 Connector with google Alexa etc**

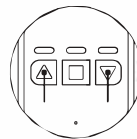
Near → Welcome home → me → more service → Alexa, google Assistant.

- 4 Work not only with mobile, but also with remote.**

- 
- Long press "stop" button 7 seconds until red light flash
  - press "up" or "down" button, each one is ok.
  - green, blue light on "up" "down" button will flash automatically twice, remote built connector with motor

## 6 Recover factory setting & Product take out

Long press "up" & "down" button together 8 seconds, recover factory setting.



Top up the projection on bottom, slide upon groove, open up back board and take out chain.



## Parameters

Name	BLINDS CONTROLLER	Model	NSM12	Control Method	MOBILE or REMOTE
Torque	1.35N.m	Speed	55rpm	Adapter Voltage	110V-240V
Frequency	2.4GHz	Voltage	12V	Rated Current	1.2A
Max Blinds Size	8FT(2.5M)*12FT(3.5M)	Max Weight	10KG	Battery Capacity	12V/1200mAH
Distance	No limit, ask for good wifi signal	Compatible	Directly connector with google home, alexa etc		