



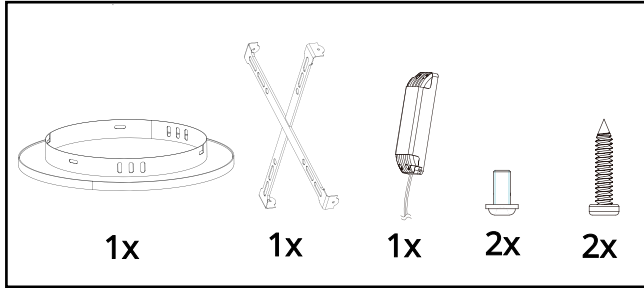
www.near-sg.com

### Tips

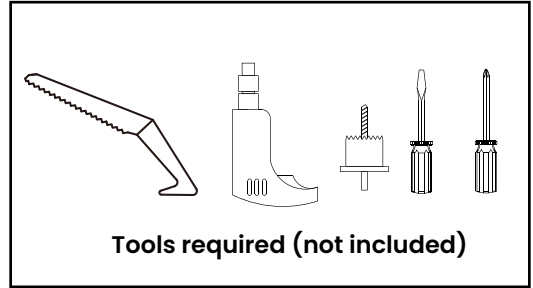
- Please hire a licensed electrician for your home's electrical works.
- Switch off the lighting point's corresponding MCBs to make sure that power is cut before handling electrical cables.



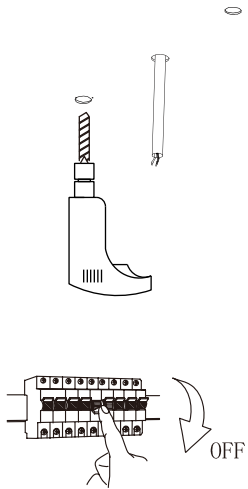
### What's included



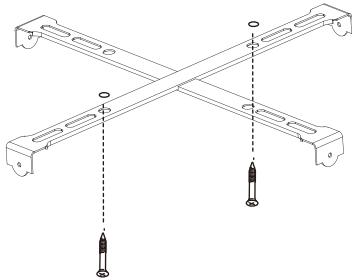
### Tools



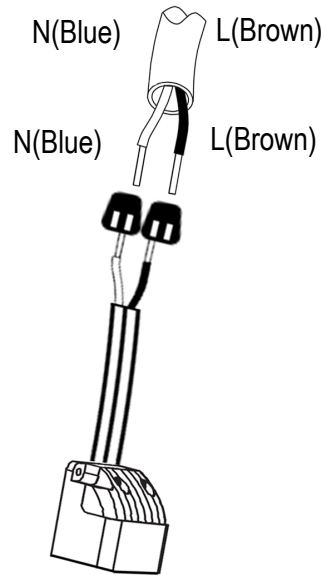
#### Step 1: Drill a hole in your false ceiling



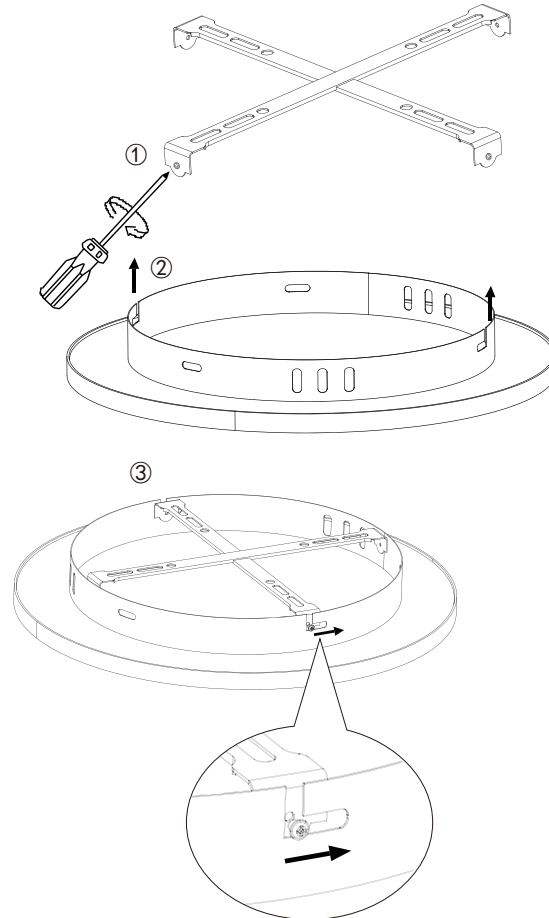
#### Step 2: Mount holder to your false ceiling



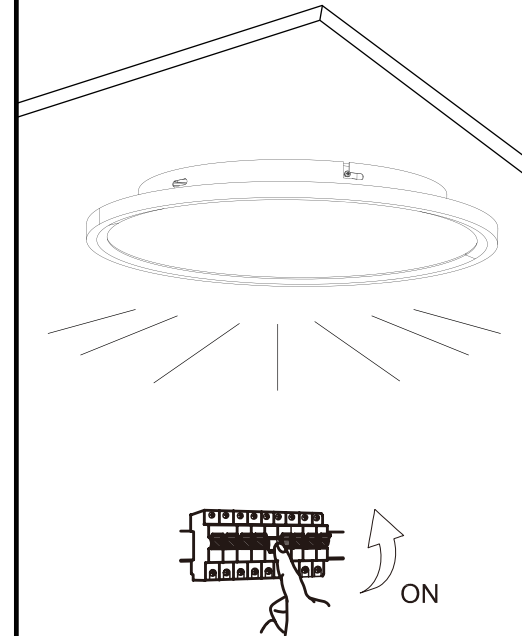
#### Step 3: Connect incoming wires to its corresponding LED driver wires via easy connectors



#### Step 4: Tighten the screws, mount the Near smart surface lamp and twist to lock it in place.



#### Step 5: Turn the light switch on and off 5 times with 3s intervals for smart light to enter pairing mode.



When Near® smart lights are blinking quickly, it is ready for pairing.

Enter the Near® app and follow the on-screen instructions to start pairing process