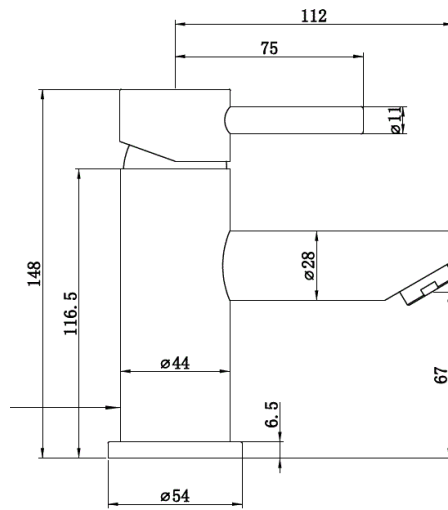


Line Drawing



Warranty Information

Proof of purchase will be required.

The guarantee does not cover faults or damage caused by incorrect installation and/or maintenance, ordinary wear and tear, water composition, etc.

*Please see www.deva-uk.com for full terms and conditions of warranty

Cleaning

Your product has a high-quality finish and should be treated with care to preserve the visible surfaces. Never use abrasives or abrasive cleaning agents to clean this product clean regularly with contamination free warm water and a damp soft cloth. Do not use products containing chlorine bleach or hydrochloric acid as these can damage the product.

We have a policy of continuous improvement and reserve the right to change specifications without notice.

METHVEN UK LIMITED METHVEN
EXPERIENCE CENTRE 3/3A
STONE CROSS COURT YEW TREE
WAY
GOLBORNE
WARRINGTON
WA3 3JD
UNITED KINGDOM
INST-INS2313-v1

TEL: 0800 195 1602
FAX: 0844 406 8690
EMAIL: sales@uk.methven.com
www.methven.com
www.deva-uk.com

Insignia Mini Mono Basin Mixer with Press Top Waste

INS2313

Installation Guide

Technical Specification

Operating Pressure

Min: 0.1 Bar

Max: 5.0 Bar

Operating Temperature

Hot: 65°C

Cold: 5°C

Inlet Connections

1/2" BSP

Features

- Suitable for a single hole basin
- Single lever tilt and turn operation
- Long life 35mm ceramic cartridge
- Water efficient - fitted with a 4lpm flow regulator
- Included press top waste



Please read all of the instructions before installation.

General

Methven recommends this product is installed by a competent person in compliance with all relevant regional regulations.

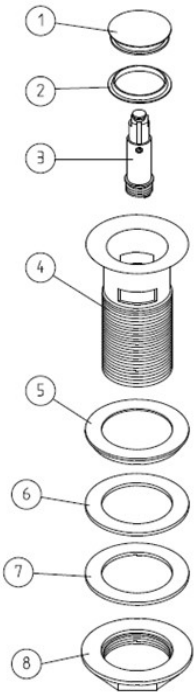
After installation all connenctions must be checked for leaks.

All outlets used primarily for personal hygiene shall deliver water at a safe temperature as per regional regulations.

It is the responsibility of the installer to ensure a waterproof seal is achieved.

Waste Installation Instructions

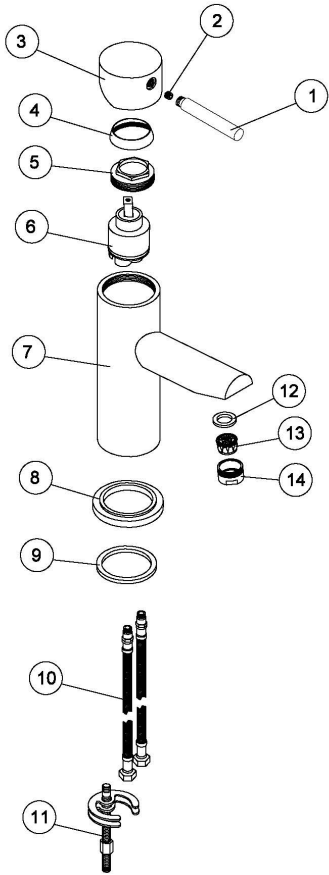
- 1) Remove the backnut, white plastic washer and smaller of the two rubber washers. Push the larger of the rubber washers up to the waste flange and insert into the hole for the waste in the basin. Please note sealant can be used in addition to, or instead of, the washers depending on the requirements of the installation or preferences of the installer.
- 2) On the underside of the basin, feed the smaller rubber washer and white plastic washer back onto the bottom of the waste tail and using the backnut, tighten until the waste is secure. As above sealant can also be used.
- 3) Attach the trap/waste pipework to the bottom of the waste body and test for leaks.



No.	Description
1	Cover
2	Plug Washer
3	Click Mechanism
4	Body
5	Flange Rubber Washer
6	Rubber Washer
7	White Plastic Washer
8	Backnut

Tap Installation Instructions

- 1) Fit the base ring onto the bottom of the tap body. The raised edge of the base ring sits inside the lip on the base of the tap with the rubber washer facing the basin.
- 2) Insert the fixing bolts into the bottom of the tap, with the slot facing out and using a flat bladed screw-driver tighten this up.
- 3) Screw the flexible tails into the bottom of the tap, by hand, until tight. Do not use PTFE tape, or similar, on the threads.
- 4) Feed the tails and fixing bolt into the hole in the basin, ensuring that the base ring and rubber washer are seated correctly and fully covering the hole.
- 5) From the underside of the basin feed the rubber horseshoe shaped washer over the fixing bolt followed by the metal one. Place the nut over the fixing bolt and tighten until the tap is fixed on the basin. Do not overtighten.
- 6) Connect the hot and cold feeds to the water supply.
- 7) Reinstate the water supply and test for leaks.



No.	Description
1	Handle Lever
2	Grub Screw
3	Handle
4	Cartridge Cover
5	Cartridge Nut
6	Cartridge
7	Tap Body
8	Base Ring
9	Base Ring Washer
10	Flexi Tails
11	Fixing Kit—Including: Fixing bolts, rubber and metal horseshoes and fixing nuts
12	Rubber Washer
13	Aerator
14	Nozzle