

Warranty Information

Proof of purchase will be required.

The guarantee does not cover faults or damage caused by incorrect installation and/or maintenance, ordinary wear and tear, water composition, etc.

*Please see www.deva-uk for full terms and conditions of warranty

Cleaning

Your product has a high-quality finish and should be treated with care to preserve the visible surfaces. Never use abrasives or abrasive cleaning agents to clean this product clean regularly with contamination free warm water and a damp soft cloth. Do not use products containing chlorine bleach or hydrochloric acid as these can damage the product.

We have a policy of continuous improvement and reserve the right to change specifications without notice.

METHVEN UK LIMITED METHVEN
EXPERIENCE CENTRE 3/3A
STONE CROSS COURT YEW TREE
WAY
GOLBORNE
WARRINGTON
WA3 3JD
UNITED KINGDOM

INST-INS106
14.09.2022

TEL: 0800 195 1602
FAX: 0844 406 8690
EMAIL: sales@uk.methven.com
www.deva-uk.com
www.methven.com

Insignia Bath Shower Mixer

INS106

Installation Guide

Technical Specification

Working Pressure:

Min: 0.1 Bar

Max: 5.0 Bar

Operating Temperature:

Hot: 65°C

Cold: 5°C

Inlet Connections:

3/4" BSP

Features:

- Suitable For A Two Hole Bath
- Deck Mounted
- Complete With 1.5 Meter Hose
- Rub Clean Single Spray Shower Head & Wall Bracket
- Suitable For All Water Pressures
- 1/4 Turn Ceramic Disc Valves



Contents

Congratulations on your purchase of your new Deva by Methven Bath Shower Mixer. Our fitting instructions have been created with you in mind to provide you with all the information you require and, if you need any further help, please don't hesitate to contact our customer care team on 0800 195 1602.

Please keep these instructions for future reference and request of replacement parts

General Safety Information

Please read all of the instructions before installation.

Methven recommends this product is installed by a competent person in compliance with all relevant regional regulations.

Remove all packaging and check the components for damage before starting installation.

This product **must** not be modified in any way as this will invalidate the guarantee.

It is the responsibility of the installer to ensure a waterproof seal is achieved, after installation all connections must be checked for leaks.

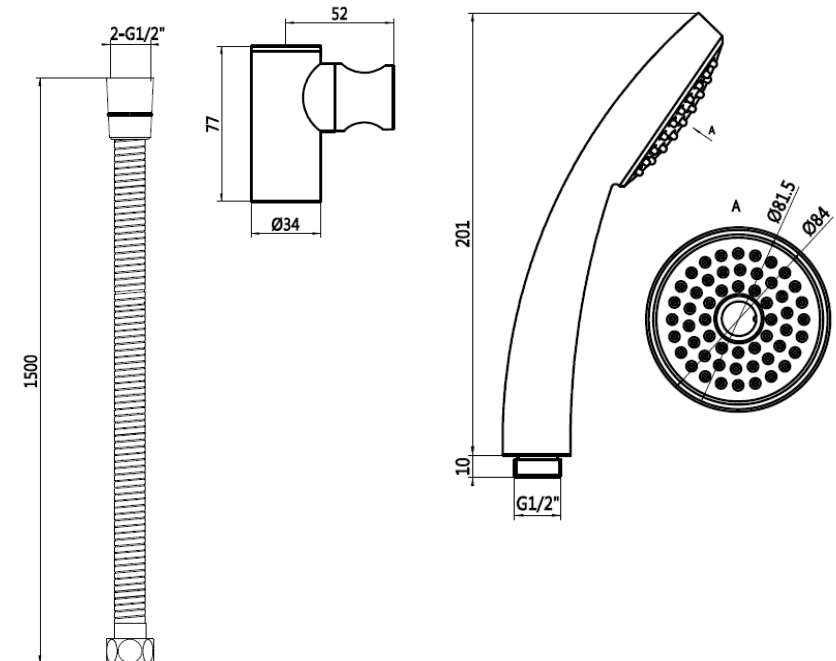
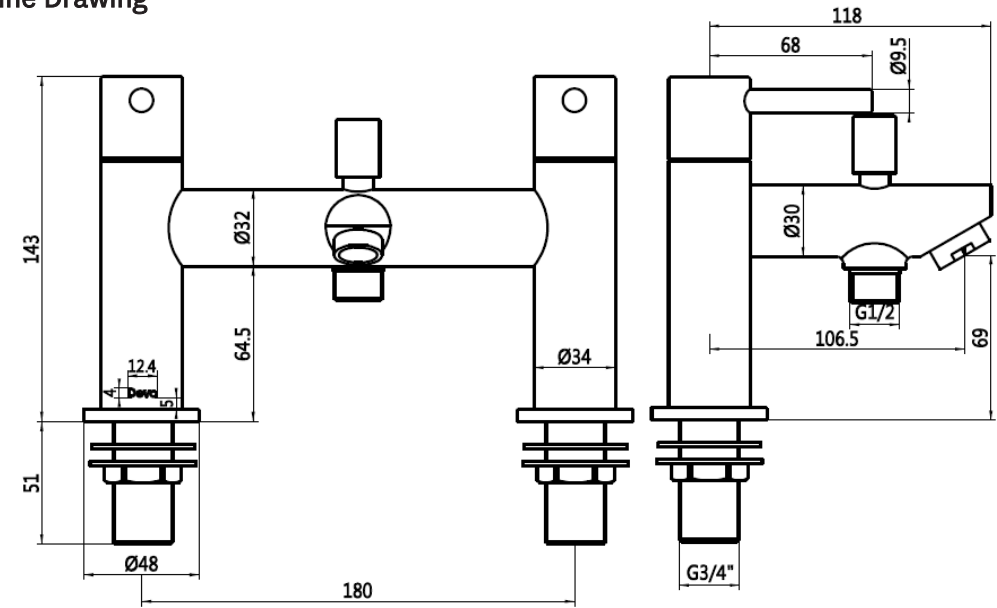
All outlets used primarily for personal hygiene shall deliver water at a safe temperature as per regional regulations.

Installation Requirements

Before commencing installation of the new product, ensure that the system has been flushed to remove any debris, which could cause damage to the valves and invalidate the warranty.

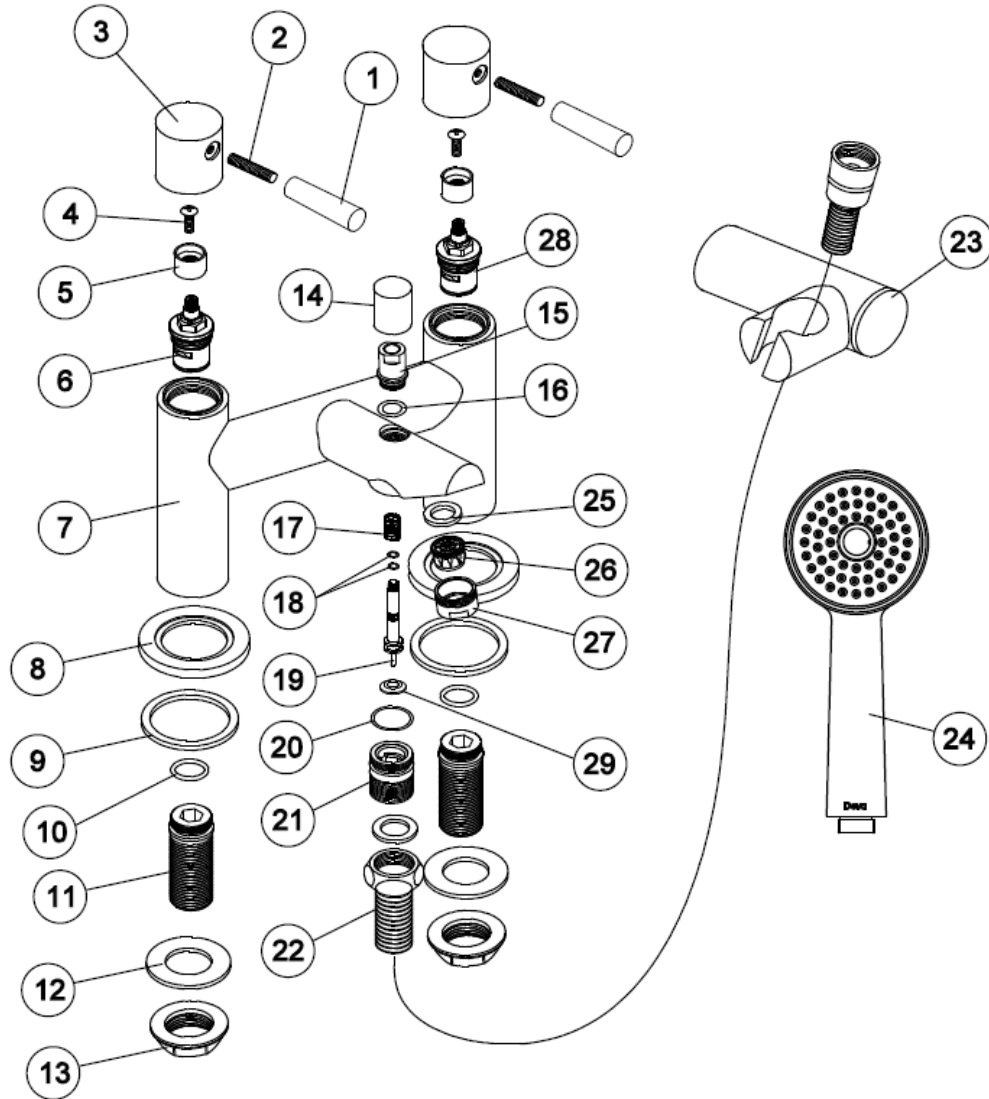
- 1) Remove the back nuts and back nut washer from the threaded tails.
- 2) Push the mixer tails through the holes in the bath, ensuring that the base rings and base ring washers are correctly positioned, fully covering the mounting holes.
- 3) Place the back nut washer and back nuts back onto the tails, under the bath, and screw up until the tap is secured in position (do not over-tighten). Please note additional sealant can be used if required.
- 4) Connect the water supply pipes to the tails and tighten, an adequate sealing method should be used to create a watertight seal.
- 5) Identify a suitable location for the wall bracket, so that the hose will not be under tension when fitted. Attach to the wall using either the plugs and screws supplied or other suitable fittings for the specific installation.
- 6) Fit a hose washer into each end of the hose, connect the handset to the cone shaped end and the other end to the hose outlet on the mixer.
- 7) Reinststate the water supply and test for leaks.

Line Drawing



Product Breakdown

Check All components are present prior to starting installation.



No.	Description
1	Handle Lever
2	Screw
3	Handle
4	Screw
5	Plastic Core
6	Cartridge
7	Body
8	Base Ring
9	Base Ring Rubber Washer
10	O-Ring
11	3/4" Inlet Threaded Tails
12	Back Nut Rubber Washer
13	Back Nut
14	Diverter Cap
15	Connector
16	O-Ring
17	Spring
18	O-Ring
19	Diverter Core
20	O-Ring
21	Hose Connector
22	1.5m Shower Hose
23	Bracket
24	Handset
25	Washer
26	Aerator
27	Nozzle
28	Cartridge
29	Washer