

# ALLURE™

---

## QUICK START GUIDE

FOR THE EPSON® SURECOLOR P800

**ALUMINUM PHOTO PANELS  
FOR DIRECT AQUEOUS PRINTING**

MATTE SURFACE | 0.040" | 1.02MM

*Patent US10166785B2*

 BREATHING®  
COLOR

# WHAT YOU NEED



## PRINTER: Epson® SureColor P800

For this Desktop printing guide, we'll be using the Epson® SureColor P800 Designer Edition UltraChrome HD Inkjet Photo Printer (2800x1400dpi)



For a full list of compatible printers, visit: <https://www.breathingcolor.com/allure-directprint-aluminum>



## PROTECTIVE LAMINATE

A post-print laminate is not required for Allure, but is recommended. It will add durability to your metal print and will allow you to achieve a satin or glossy finish. Without protective laminate, you can expect prints on Allure to be about as durable as inkjet prints on fine art paper.

### Film Laminate

We have found film laminate to work very well in protecting Allure metal. It adds a durable, physical layer between the print and the elements, and also adds depth to your print. Use different finishes of film laminate (gloss, satin, matte, etc.) to achieve your desired finished look. Shop for [film laminators](#) and [Quartz film laminate](#) in our store.

### Liquid Laminate

Liquid laminates can also be used to coat Allure panels. Our [Timeless varnish](#) is water-based and can be applied with a roller or HVLP spray gun. Note that there is some visible surface texture when using Timeless glossy or satin finishes. Most people are OK with this texture, but we like to mention it. Timeless matte finish dries smooth and flat. Epoxy resin can also be used to protect Allure; we recommend ArtResin.

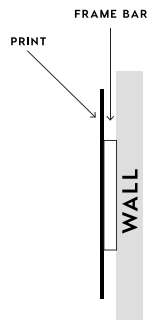


## MOUNTING FRAME

Our Ready-to-Hang Bars were designed as the perfect mounting system for Allure metal sheets. We use industrial strength double-sided tape to allow you to easily adhere the frame to the back of the print. Our Ready-to-Hang bars have a lip that allows your finished & mounted print to hang perfectly flush against the wall.

Our wood frame bars are sold in 9.5' length moulding as well as preassembled ready-made sizes. We recommend using 3M 4496B double-sided tape.

[Shop Ready-to-Hang Frame Kits](#)



Find everything you need to create the perfect high definition aluminum print at [breathingcolor.com](https://www.breathingcolor.com). For more information on our products contact Breathing Color today!

833.320.1187 | [sales@breathingcolor.com](mailto:sales@breathingcolor.com)

# PRINTING INSTRUCTIONS

## 1 REMOVE THE PROTECTIVE RELEASE LINER

**CAREFULLY** remove the protective release liner on each sheet before use. The release liner is a thin clear film and can be difficult to see.



## 2 LOADING THE SHEET

Always make sure the Platen Gap/Head Height setting on your printer is set to the highest/widest possible setting.

Allure aluminum panels load into your Epson® printer not unlike a normal sheet of paper. Simply follow your printer's recommended sheet loading procedure. We recommend the **'Ultra Premium Presentation Matte'** media type setting, with a **'Wide'** platen gap.

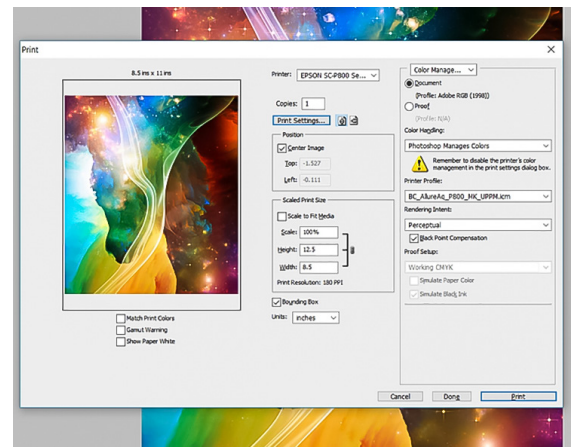
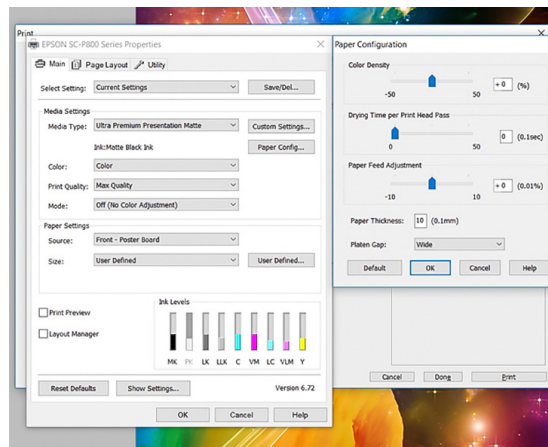
- Push firmly on the center of the gray manual feed tray to open it.
- With the printable side up, slowly slide your Allure Photo Panel into the manual feed tray.
- Once it's in the printer, make sure the panel is flush with the right edge and lined with the guide in the front of the tray.
- Push **'load'** on the P800's control panel and the panel will begin to load.



## 3 CONFIGURE PRINTER SETTINGS

Printing onto an Allure™ panel requires a few minor adjustments to accommodate for the thickness. Here is an example of recommended print settings for the Epson P800.

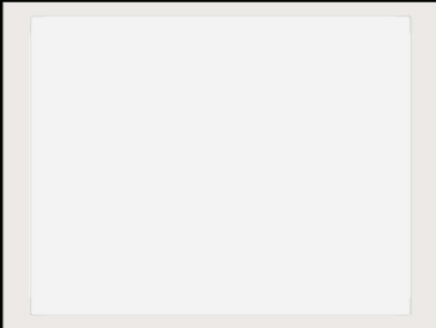
Download Our Allure™ ICC Profile From The Breathing Color Website



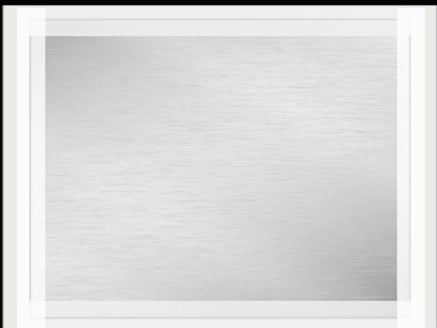
4

NOW PRINT!

Once it's finished printing, push the eject on the P800's control panel, then select 'yes' to unload the panel.



PRINT SIDE



BACK SIDE



PRINTED & REMOVED FROM CARRIER