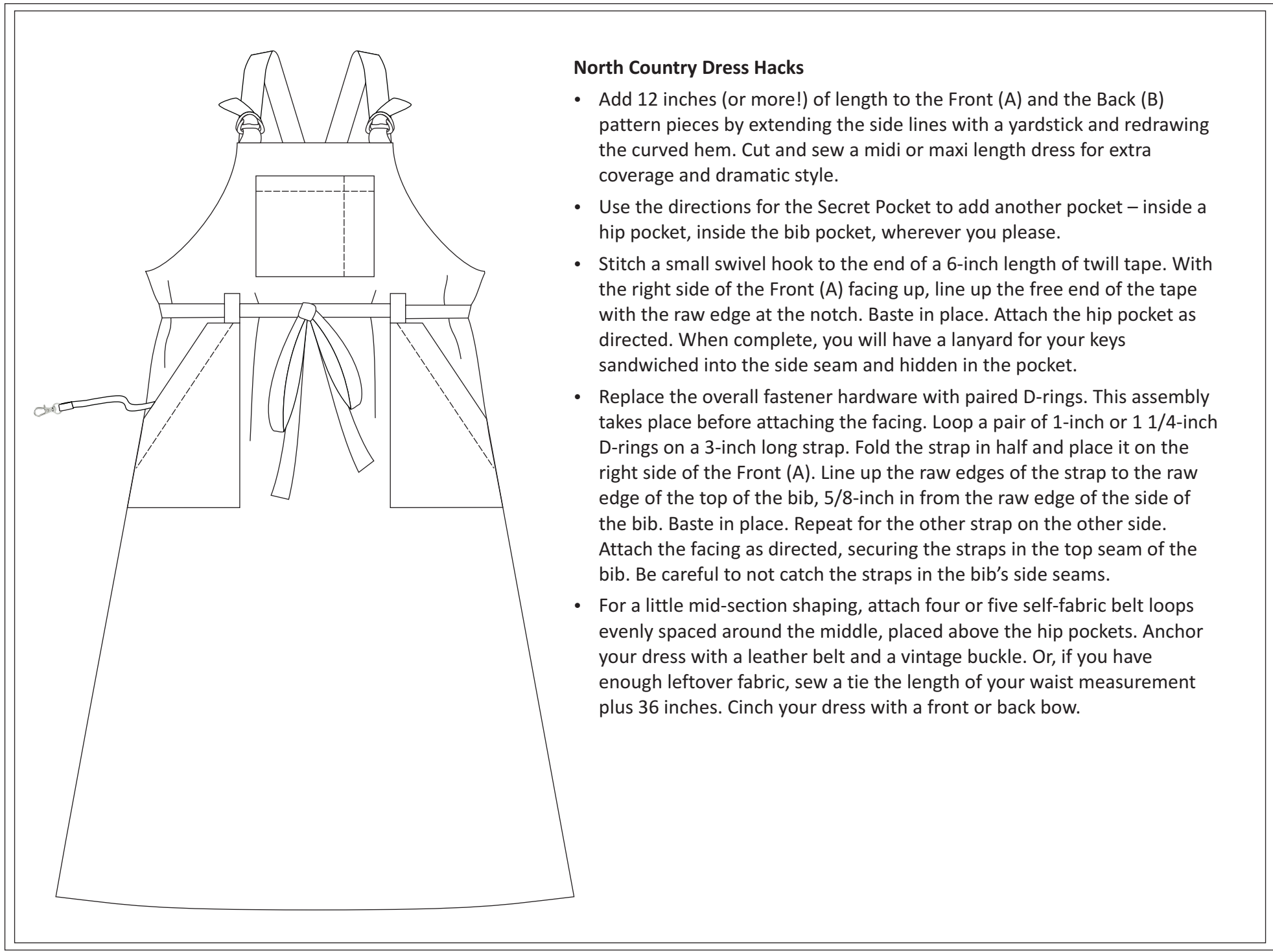
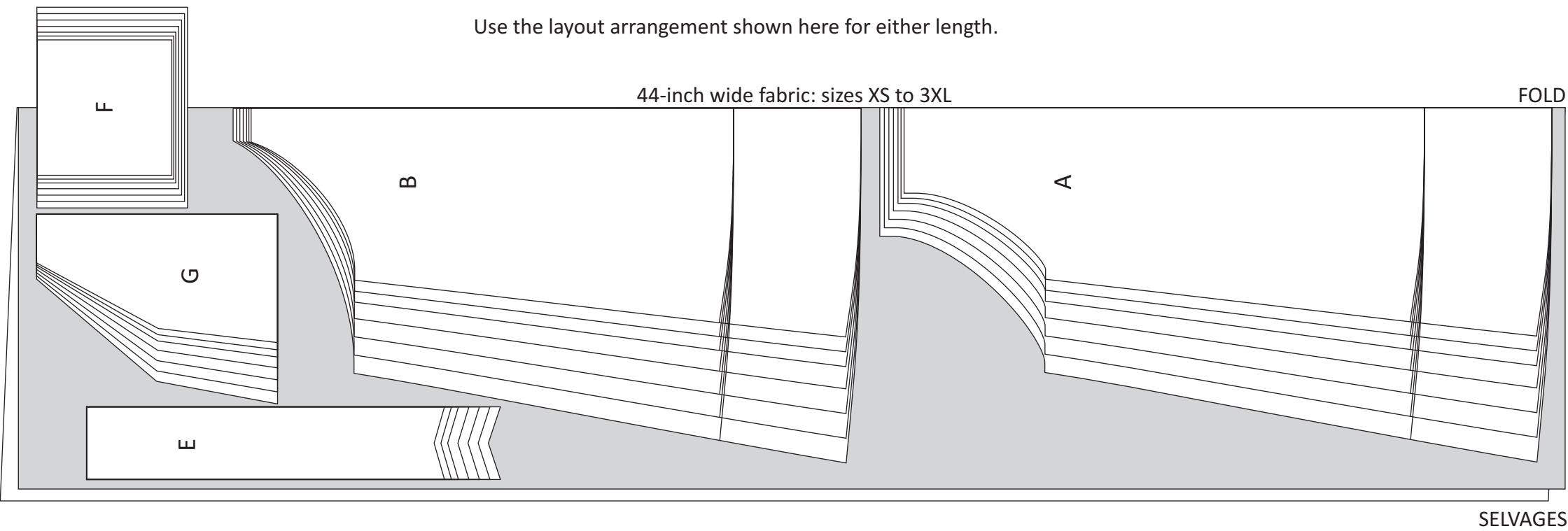
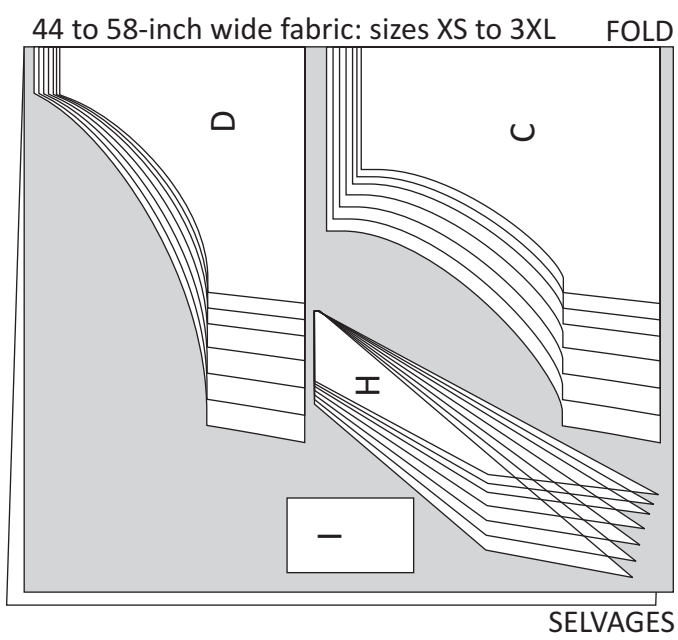
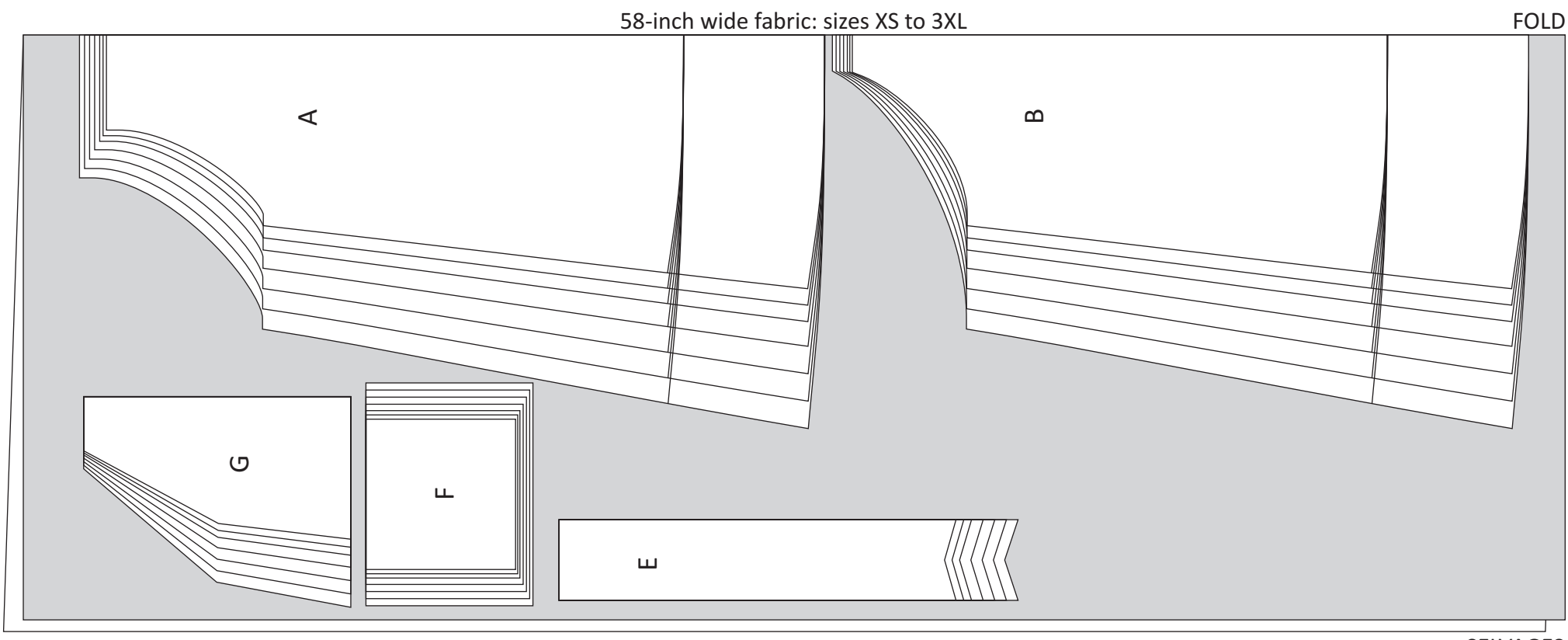
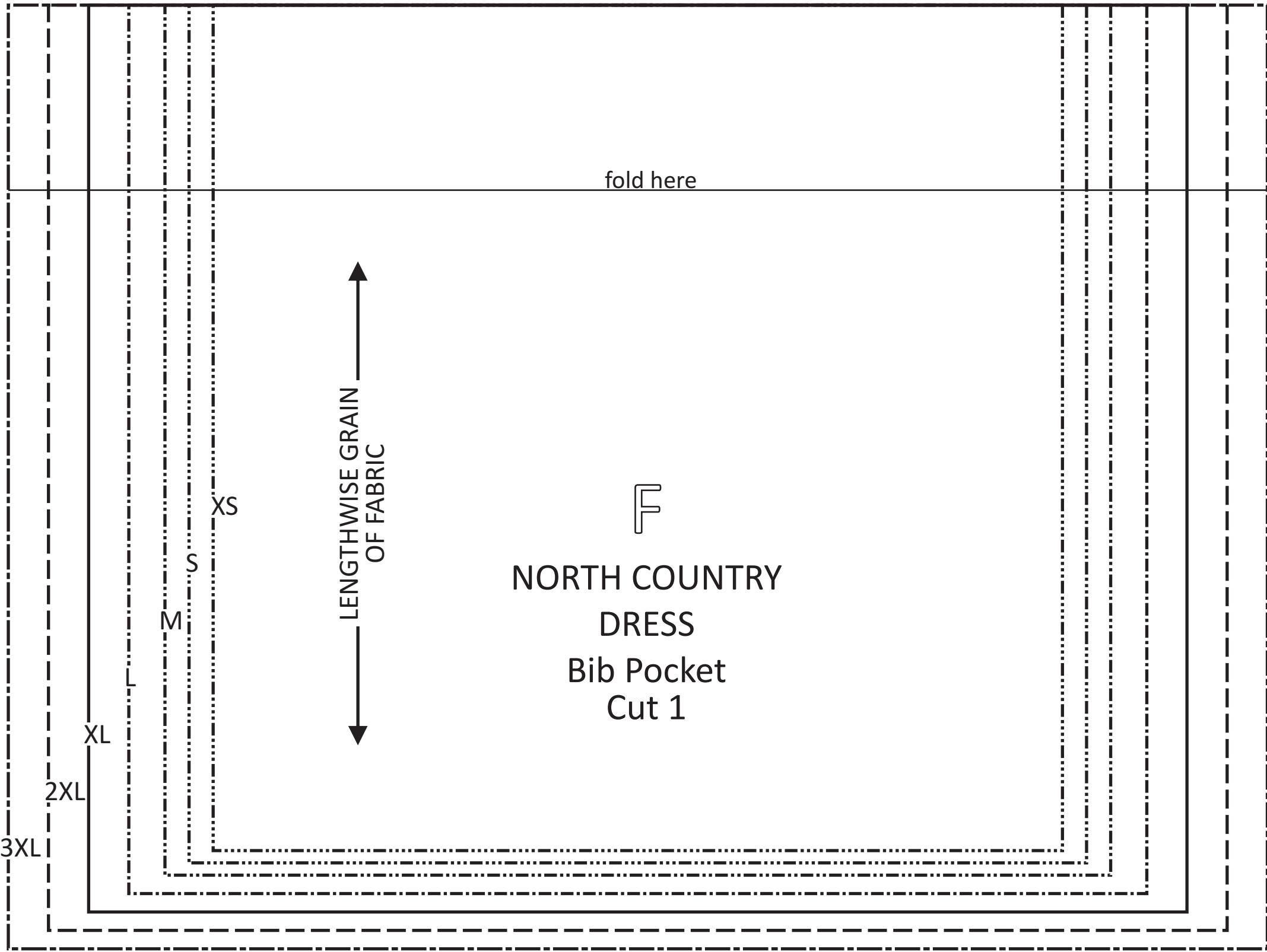
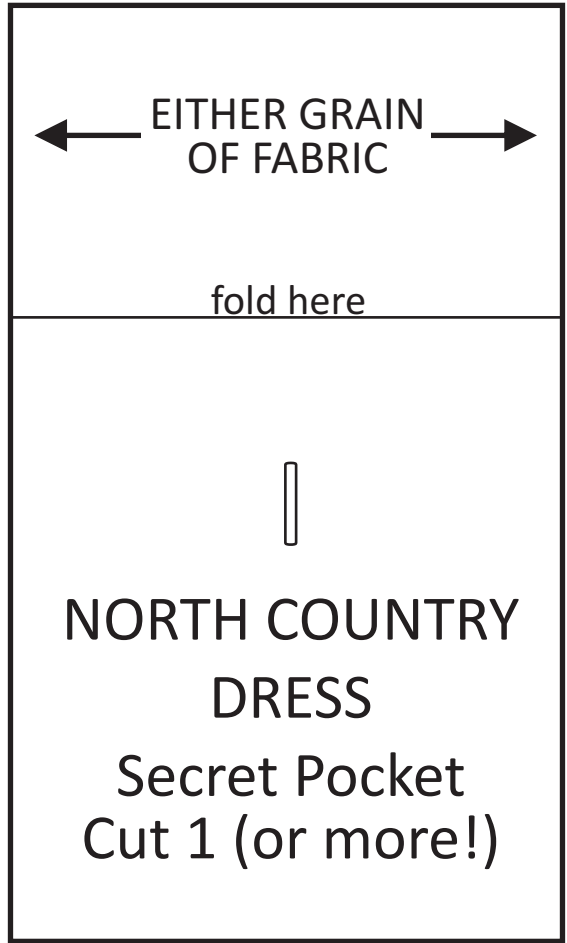
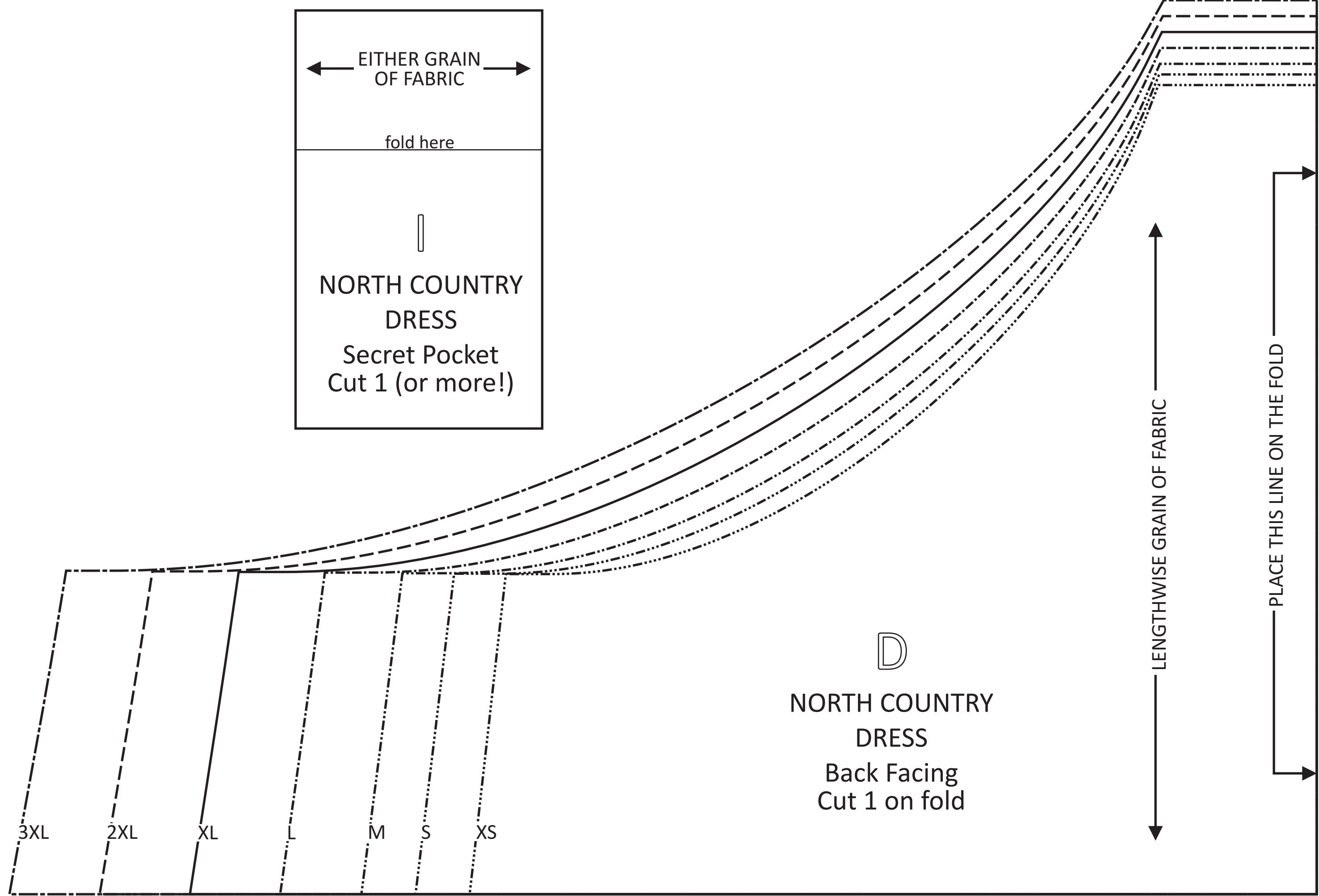
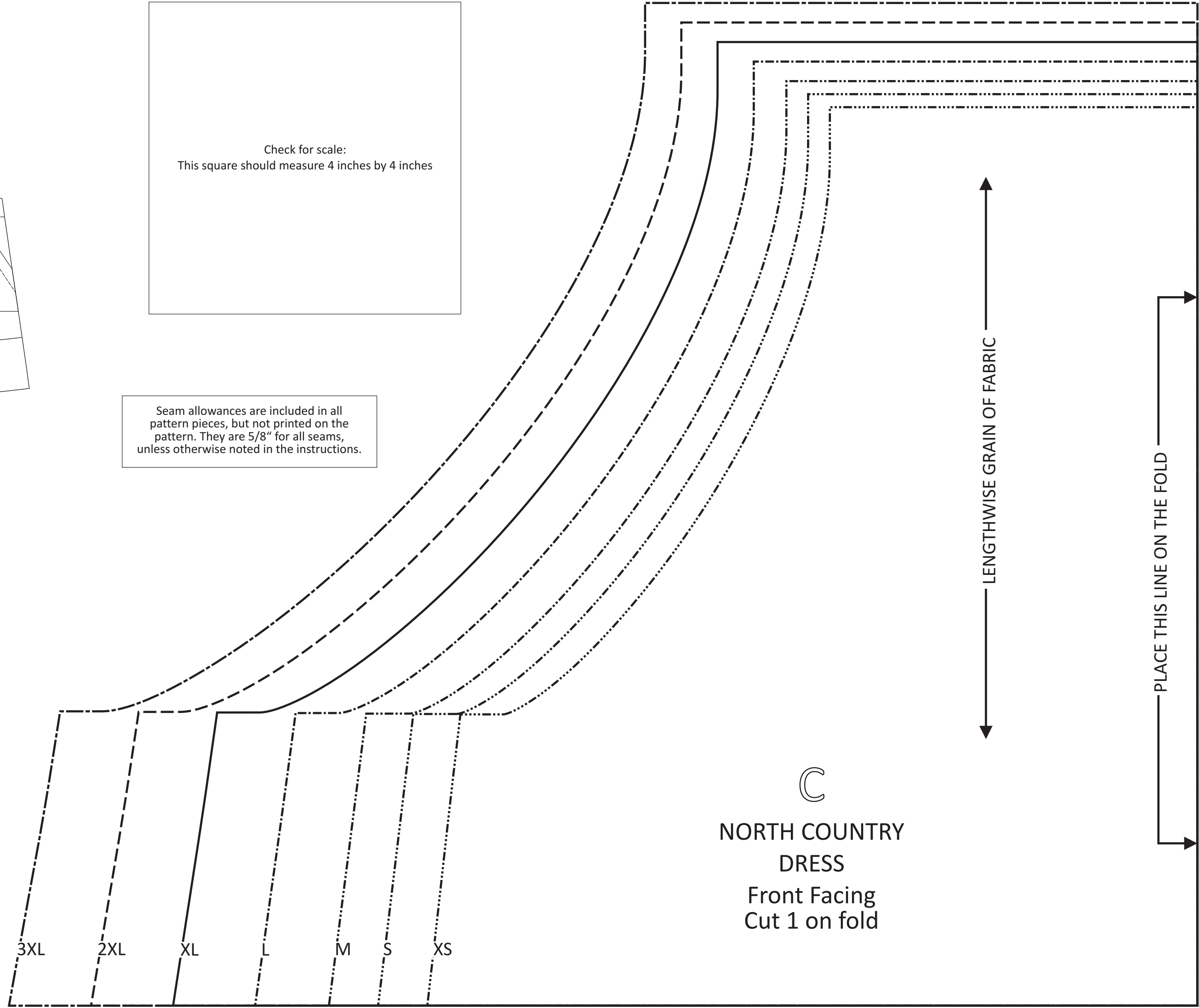
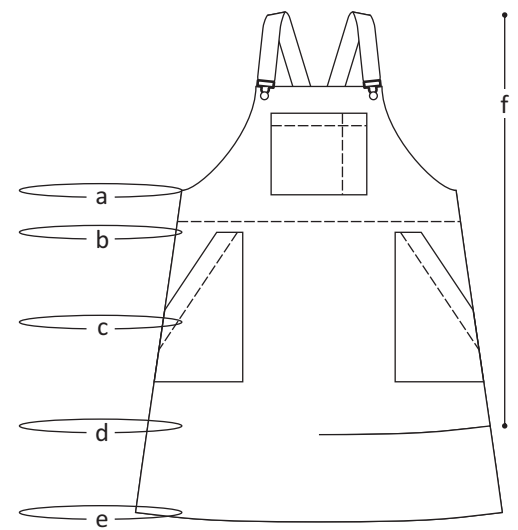


Seam allowances are included in all pattern pieces, but not printed on the pattern. They are 5/8" for all seams, unless otherwise noted in the instructions.



- North Country Dress Hacks**
- Add 12 inches (or more!) of length to the Front (A) and the Back (B) pattern pieces by extending the side lines with a yardstick and redrawing the curved hem. Cut and sew a midi or maxi length dress for extra coverage and dramatic style.
 - Use the directions for the Secret Pocket to add another pocket – inside a hip pocket, inside the bib pocket, wherever you please.
 - Stitch a small swivel hook to the end of a 6-inch length of twill tape. With the right side of the Front (A) facing up, line up the free end of the tape with the raw edge at the notch. Baste in place. Attach the hip pocket as directed. When complete, you will have a lanyard for your keys sandwiched into the side seam and hidden in the pocket.
 - Replace the overall fastener hardware with paired D-rings. This assembly takes place before attaching the facing. Loop a pair of 1-inch or 1 1/4-inch D-rings on a 3-inch long strap. Fold the strap in half and place it on the right side of the Front (A). Line up the raw edges of the strap to the raw edge of the top of the bib, 5/8-inch in from the raw edge of the side of the bib. Baste in place. Repeat for the other strap on the other side. Attach the facing as directed, securing the straps in the top seam of the bib. Be careful to not catch the straps in the bib's side seams.
 - For a little mid-section shaping, attach four or five self-fabric belt loops evenly spaced around the middle, placed above the hip pockets. Anchor your dress with a leather belt and a vintage buckle. Or, if you have enough leftover fabric, sew a tie the length of your waist measurement plus 36 inches. Cinch your dress with a front or back bow.



If your hips measure: 34-37 in. 37-40 in. 40-43 in. 43-47 in. 48-52 in. 52-56 in. 56-60 in.
Try this size: XS S M L XL 2XL 3XL

GARMENT FINISHED MEASUREMENTS in inches							
XS	S	M	L	XL	2XL	3XL	
35 5/8	38	40 1/2	44 1/8	48 1/4	52 1/4	56 1/4	
37	39 1/2	42 1/8	45 7/8	50 1/8	54 3/8	58 1/2	
40 3/8	43 1/8	45 7/8	50 1/8	54 5/8	59 1/4	63 7/8	
44 3/8	47 3/8	50 3/8	55	60	65	70 1/8	
47 1/2	50 3/4	54	58 7/8	64 1/4	69 5/8	75 1/8	
33 1/8	33 3/8	33 5/8	34 1/8	34 3/8	34 3/8	34 5/8	
40 1/8	40 3/8	40 5/8	41 1/8	41 3/8	41 3/8	41 5/8	

- a Bottom of Bib (Lower Ribcage)
b Waist
c Hip
d Tunic Hem
e Dress Hem
f Tunic: Shoulder to Hem (adjustable)
g Dress: Shoulder to Hem (adjustable)

NORTH COUNTRY DRESS

PATTERN BY ELLEN MASON
FOR TAPROOT MAGAZINE, ISSUE 41::EXTEND.

taproot
INSPIRATION FOR MAKERS, DOERS & DREAMERS