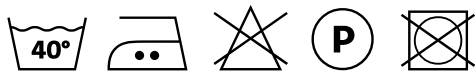
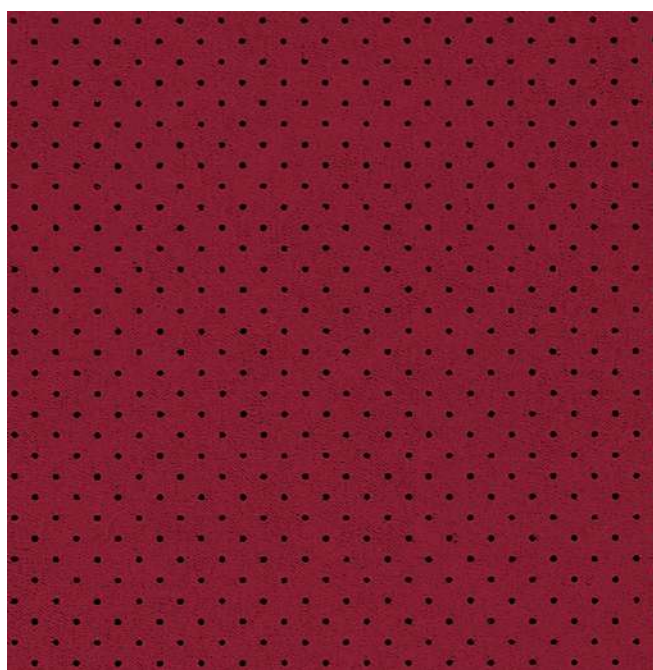


A. Air

Composizione/ Composition	100 %PL
Altezza/ Width	140 cm
Peso/ Weigt	(± 5%) 530 g/m2
Resistenza alla luce/ Colour fasteness to light	Scuri/ Dark 4
Martindale	40.000
Resistenza del colore al lavaggio/ Colour fasteness to washing	3/4
Ignifugo/ Fireproof	no
Idrorepellente/ Waterproof	no
Antimacchia/ Stain resistant	si



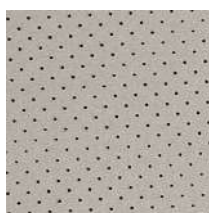
Air 319



Air 103



Air 100



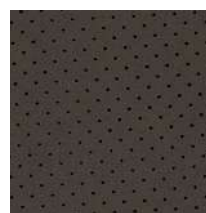
Air 806



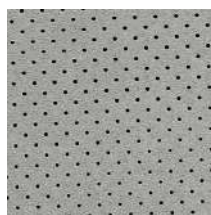
Air 412



Air 603



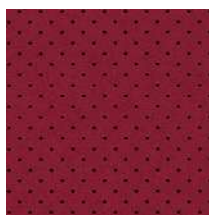
Air 609



Air 610



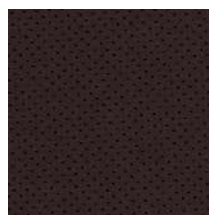
Air 611



Air 319



Air 305



Air 405



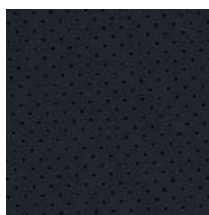
Air 415



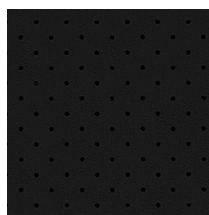
Air 008



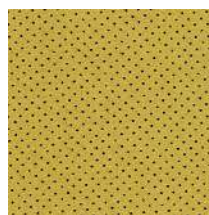
Air 009



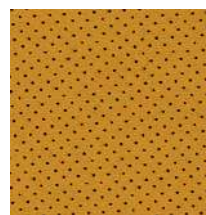
Air 626



Air 200

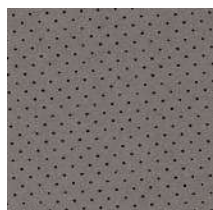


Air 504

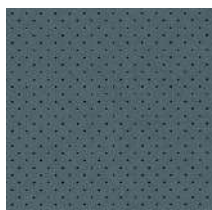


Air 503

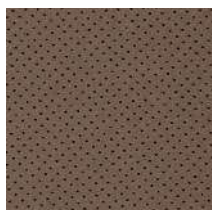
A. Air



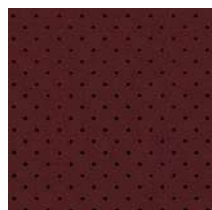
Air 604



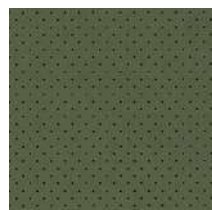
Air 717



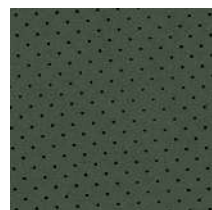
Air 413



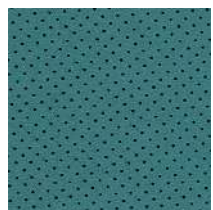
Air 320



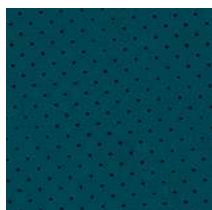
Air 808



Air 801



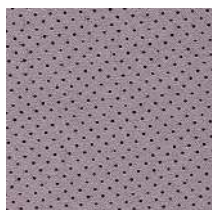
Air 715



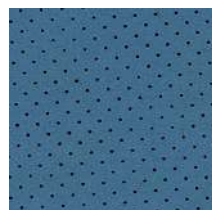
Air 809



Air 006



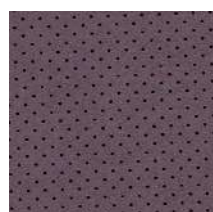
Air 001



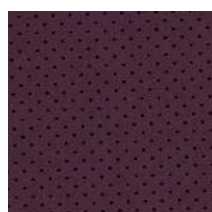
Air 700



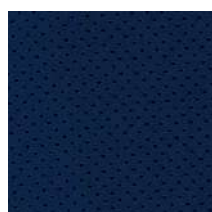
Air 701



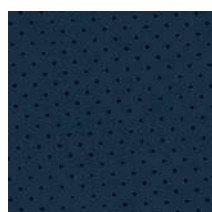
Air 007



Air 010



Air 704



Air 705

A. Cruise Melange

Composizione/
Composition **58% recycled PL**
42 % PL

Altezza/ Width **140 cm**

Peso/
Weight **(± 4%)**
580 g/m2

Resistenza alla luce/
Colour fastness to light

Martindale **40.000**

Resistenza del colore al lavaggio/
Colour fastness to washing **3/4**

Ignifugo/
Fireproof **no**

Idrorepellente/
Waterproof **no**

Antimacchia/
Stain resistant **no**



Cruise Melange 001

Pant. 12-0304



Cruise Melange 007
Pant. 13-1405



Cruise Melange 005
Pant. 13-4409



Cruise Melange 003
Pant.15-0543



Cruise Melange 004
Pant. 18-5410



Cruise Melange 009
Pant. 13-4303



Cruise Melange 010
Pant. 19-4220



Cruise Melange 011
Pant. 19-4015

A. Manhattan

Composizione/
Composition **26% PL - 37% PC**
21% CO - 16% LI

Altezza/
Width **140 cm**

Peso/
Weigt **(± 5%)**
635 g/m2

Resistenza alla luce/
Colour fastness to light **Scuri/ Dark**
4

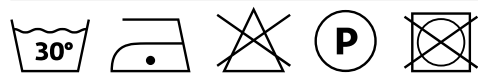
Martindale **25.000**

Resistenza del colore al lavaggio/
Colour fastness to washing **3/4**

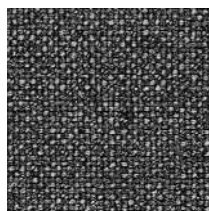
Ignifugo
Fireproof **no**

Idrorepellente
Waterproof **no**

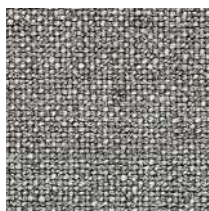
Antimacchia
Stain resistant **no**



Manhattan 804
Pant. 15-0743



Manhattan 601
Pant. 18-0000



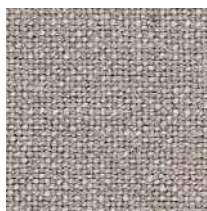
Manhattan 603
Pant. 19-0809



Manhattan 705
Pant. 19-3921



Manhattan 400
Pant. 12-1403



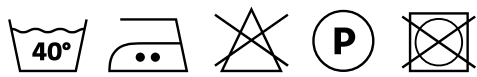
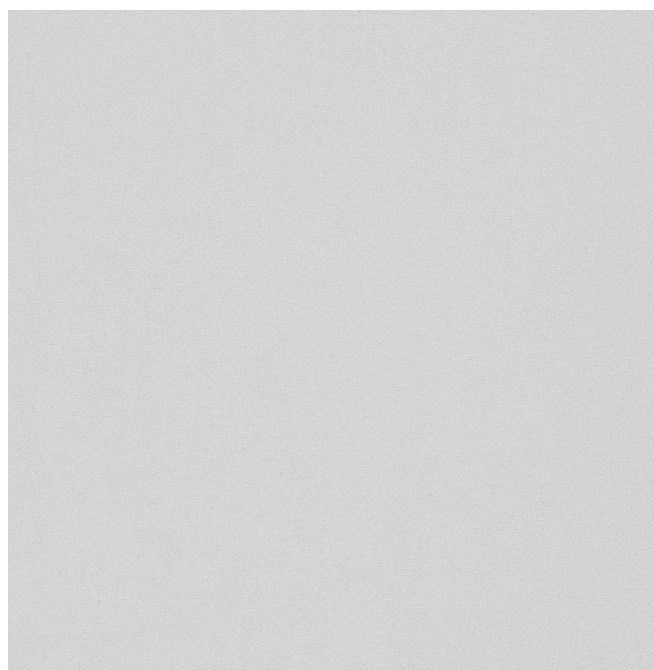
Manhattan 402
Pant. 16-1210



Manhattan 600
Pant. 16-1107

A. Mario

Composizione/ Composition	100 %PL
Altezza/ Width	140 cm
Peso/ Weight	(± 5%) 530 g/m²
Resistenza alla luce/ Colour fastness to light	Scuri/ Dark 4
Martindale	40.000
Resistenza del colore al lavaggio/ Colour fastness to washing	3/4
Ignifugo/ Fireproof	no
Idrorepellente/ Waterproof	no
Antimacchia/ Stain resistant	si



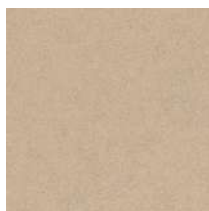
Mario 103
Pant.11-4301



Mario 100
Pant. 12-0404



Mario 806
Pant. 14-1106



Mario 412
Pant. 14-1209



Mario 603
Pant. 18-1015



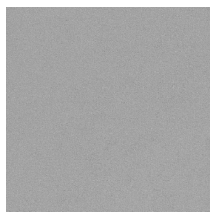
Mario 609
Pant.19-0814



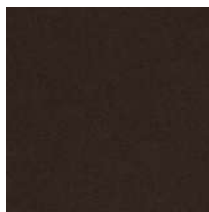
Mario 319
Pant. 18-1550



Mario 305
Pant. 19-1760



Mario 610
Pant. 16-4402



Mario 405
Pant. 19-0712



Mario 415
Pant. 19-0915

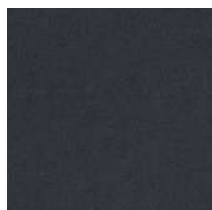


Mario 008
Pant. 18-2527

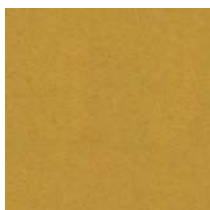


Mario 009
Pant. 19-3737

A. Mario



Mario 626
Pant. 19-4019



Mario 504
Pant. 14-0848



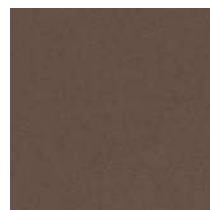
Mario 503
Pant. 16-1054



Mario 604
Pant. 16-1107



Mario 717
Pant. 18-5610



Mario 413
Pant. 17-1327



Mario 808
Pant. 18-0435



Mario 801
Pant. 18-6114



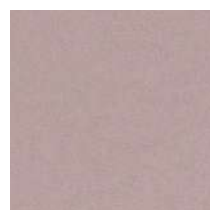
Mario 007
Pant. 19-3316



Mario 809
Pant. 18-4834



Mario 611
Pant. 19-3906



Mario 006
Pant. 16-1508



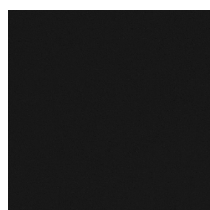
Mario 001
Pant. 15-3508



Mario 715
Pant. 19-3316



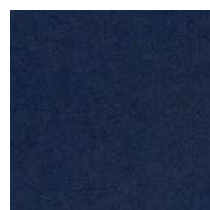
Mario 701
Pant. 19-4050



Mario 200
Pant. 19-4006



Mario 010
Pant. 19-1623



Mario 704
Pant. 19-4027



Mario 705
Pant. 19-4324



Mario 320
Pant. 19-1532



Mario 700
Pant. 18-4036

A. Nord Wool

Composizione/ Composition	70% WO - 30% PL
Altezza/ Width	150 cm
Peso/ Weight	(± 5%) 345 g/m²
Resistenza alla luce/ Colour fastness to light	Scuri/ Dark 5
Martindale	100.000
Resistenza del colore al lavaggio/ Colour fastness to washing	4/5
Ignifugo/ Fireproof	no
Idrorepellente Waterproof	no
Antimacchia Stain resistant	no



N.B. Solo lavaggio a secco/ Dry clean only

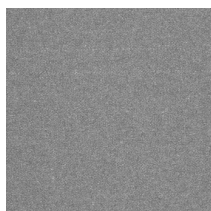
Nord Wool 404
Pant. 15-1308



Nord Wool 502
Pant. 14-1041



Nord Wool 802
Pant. 17-0336



Nord Wool 600
Pant. 17-4402



Nord Wool 001
Pant. 18-2929



Nord Wool 003
Pant.18-2326



Nord Wool 302
Pant. 19-1663



Nord Wool 701
Pant. 19-4118



Nord Wool 402
Pant. 11-0604



Nord Wool 200
Pant. 19-4203

A. Nuvole

Composizione/
Composition **95 %PL - 05%CO**

Altezza/
Width **140 cm**

Peso/
Weight **(± 4%)
785 g/m²**

Resistenza alla luce/
Colour fastness to light **4**

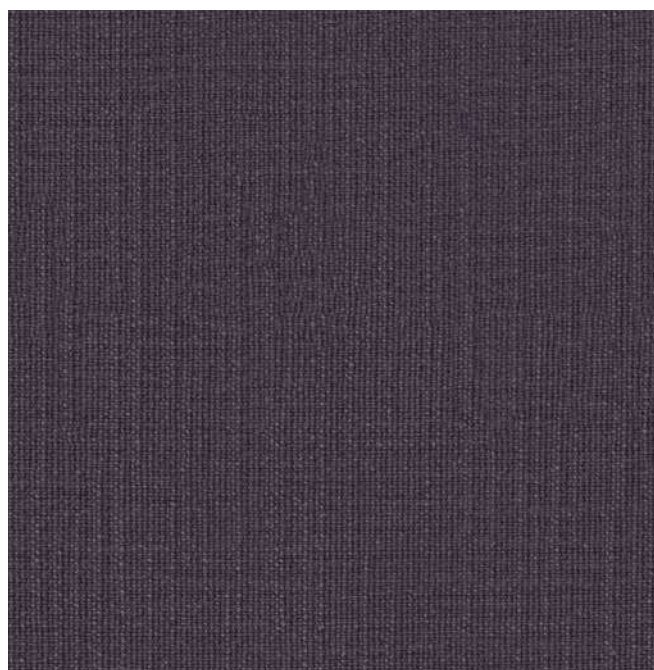
Martindale **55.000**

Resistenza del colore al lavaggio/
Colour fastness to washing **4**

Ignifugo/
Fireproof **no**

Idrorepellente/
Waterproof **si**

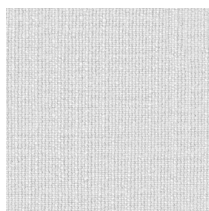
Antimacchia/
Stain resistant **si**



Nuvole 003
Pant. 19-3217



Nuvole 100
Pant. 13-0907



Nuvole 111
Pant. 11-0601



Nuvole 501
Pant.16-0954



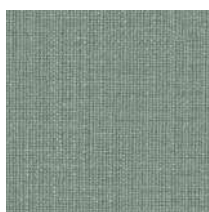
Nuvole 601
Pant. 14-4103



Nuvole 604
Pant. 17-1212



Nuvole 704
Pant. 19-4517



Nuvole 800
Pant. 16-5304

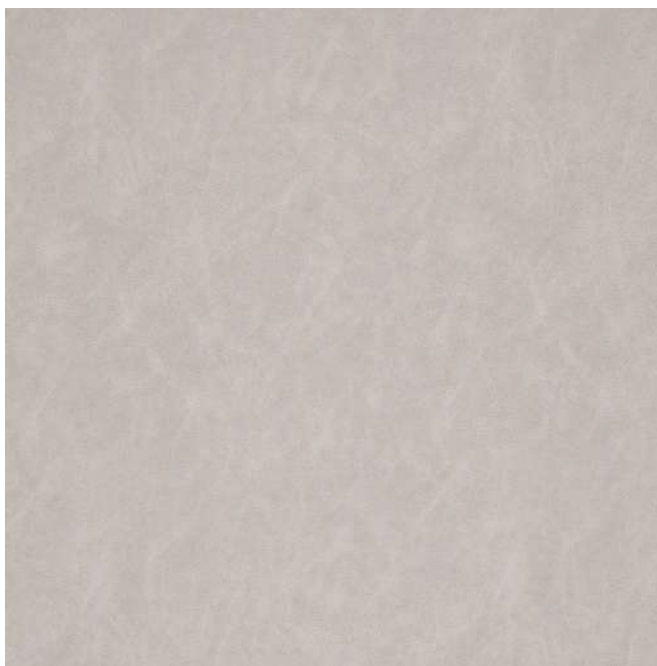


Nuvole 804
Pant. 19-0315



Nuvole 901
Pant. 17-1424

A. Pelle Taurus



Taurus 25



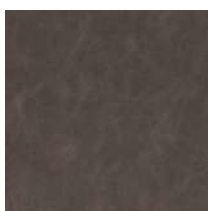
Taurus 61



Taurus 27



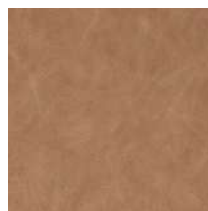
Taurus 50



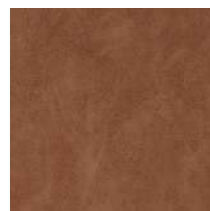
Taurus 76



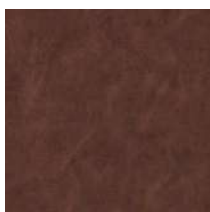
Taurus 32



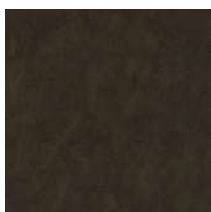
Taurus 20



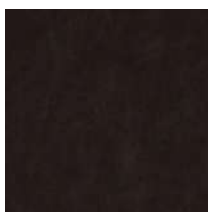
Taurus 81



Taurus 30



Taurus 62



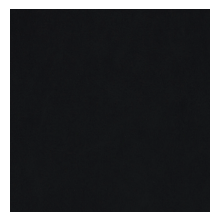
Taurus 84



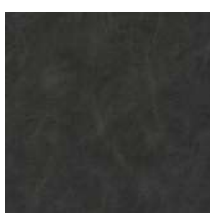
Taurus 64



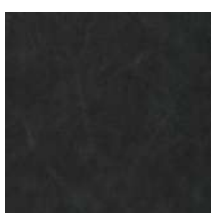
Taurus 01



Taurus 22



Taurus 74



Taurus 104

A. Pelle Taurus

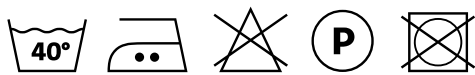
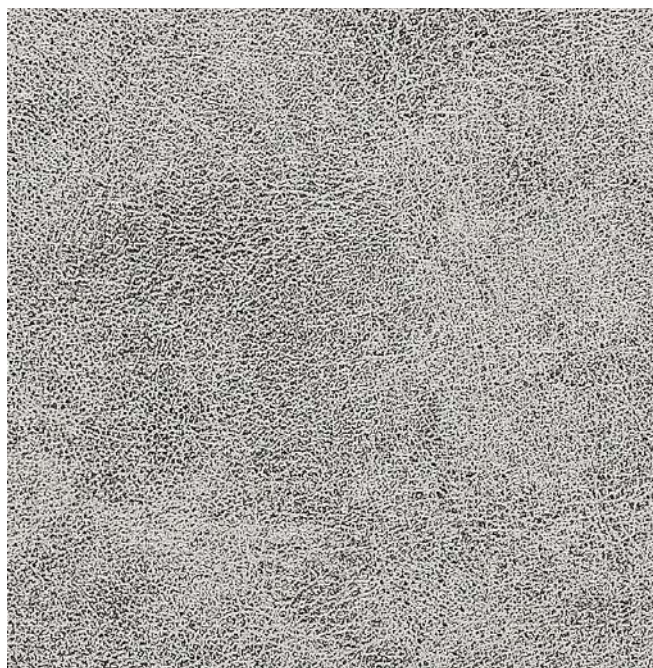


Composizione/ Composition		Caratteristiche tecniche/ Technical datasheet		
Altezza/ Width	138 cm	Test	Metodo/ Method	Valori/ Result
Peso/ Weight	960± 10% g/m2	Solidità colore fregamento/ Color fastness	ISO 105-X12	≥4-5 grado Secco e umido/ Dry and wet
Spessore/ Thickness	1,5 ± 10%mm	Carico di rottura/ Tensile strength	ISO 1421:2000	596,63 N/3cm (Trama/ Weft) 570,8 N/3cm (Ordito/ Warp)
Pulire delicatamente con un panno morbido e umido. Non usare abrasivi solventi e detergenti chimici. Gently wipe with a soft and damp cloth. Do not use abrasive solvent and chemical detergents.		Solidità colore alla luce/ Solidity in light	ISO 105-B02:2004	5 chiari 6 medi 7 scuri 5 light 6 medium 7 dark
		Resistenza all'abrasione/ Abrasion resistance	ISO 12947-2 (Martindale)	>100.000 Giri/Cicles
		Resistenza alle flessioni/ Resistance to flexure	ISO 7854:1999	>30.000 n°Flex
		Resistenza al fuoco/ Flame resistance	BS 5852-CAL TB 117:2013	Pass



A. Sauvage

Composizione/ Composition	100 %PL
Altezza/ Width	140 cm
Peso/ Weigt	(± 5%) 530 g/m2
Resistenza alla luce/ Colour fastness to light	Scuri/ Dark 4
Martindale	40.000
Resistenza del colore al lavaggio/ Colour fastness to washing	3/4
Ignifugo/ Fireproof	no
Idrorepellente/ Waterproof	no
Antimacchia/ Stain resistant	si



Sauvage 100



Sauvage 415



Sauvage 603



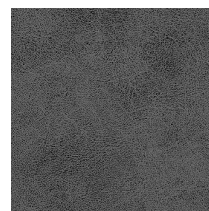
Sauvage 604



Sauvage 609



Sauvage 610

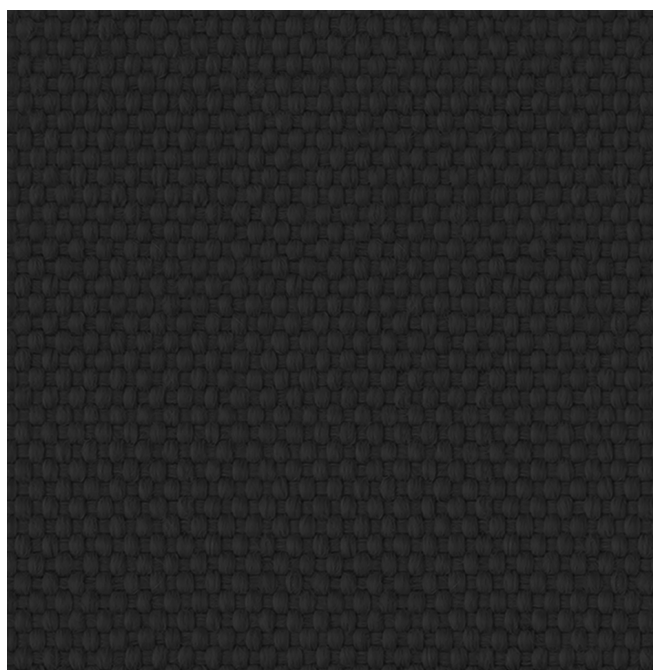


Sauvage 611

B. Alba

Composizione/ Composition	100%PP
Altezza/ Width	140 cm
Peso/ Weigt	(± 5%) 465 g/m2
Resistenza alla luce/ Colour fastness to light	>4-5
Martindale	≥40.000
Resistenza del colore al lavaggio/ Colour fastness to washing	5
Ignifugo/ Fireproof	no
Idrorepellente/ Waterproof	no
Antimacchia/ Stain resistant	si

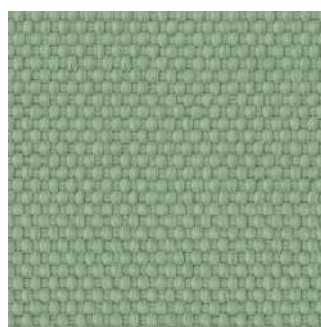
Nel caso di macchie secche o particolarmente resistenti si può agire localmente trattando la macchia con uno smacchiatore attivo, sfregare leggermente e lasciar agire qualche minuto, dopodichè effettuare il normale lavaggio in lavatrice a 30°/ Far dry or stubborn stains, use a stain remover and rub gently. Set asi de far a fewminutes and then wash as usual in the washing mach i ne at 30°



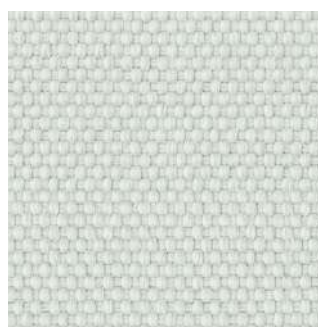
Alba 022



Alba 025



Alba 026



Alba 100



Alba 007

B. Bilia



Composizione/ Composition	100 % PL
Altezza/ Width	140 cm
Peso/ Weigt	(± 5%) 300 g/m2
Resistenza alla luce/ Colour fastness to light	4
Martindale	50.000
Resistenza del colore al lavaggio/ Colour fastness to washing	3
Ritiro/ Shrinkage	2%
Ignifugo/ Fireproof	no
Idrorepellente Waterproof	no
Antimacchia Stain resistant	si

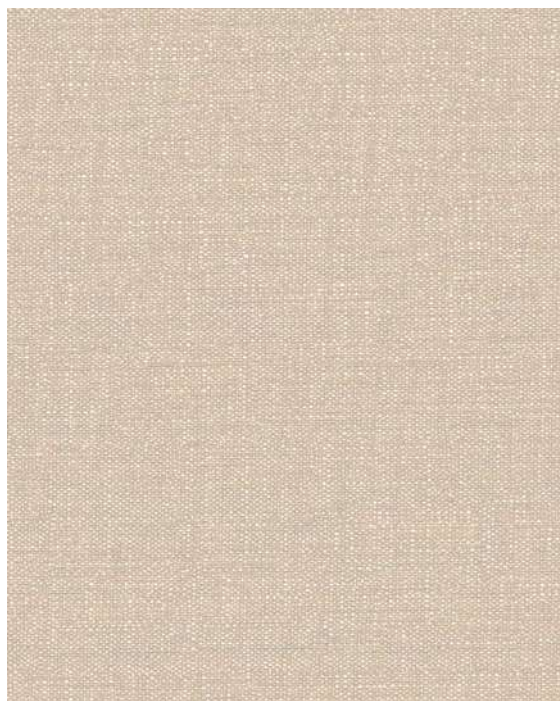
Norme di smacchiatura/ Cleaning instructions Tamponare tempestivamente i liquidi con panno asciutto o spazzolare lo sporco secco. Dab promptly the fallen liquids with a dry cloth or brush gently the dry dirt.

Macchie acquose - Bibite, caffè, vino/ Liquid stains - Drink, coffee, wine
Asportare i liquidi con carta assorbente o panno asciutto senza esercitare eccessiva pressione sul tessuto. In caso di penetrazione della macchia, strofinare con spugna umida, se necessario usare del sapone neutro da risciacquare abbondantemente con acqua tiepida e spugna pulita. Remove the stain using blotting paper or a dry cloth and avoid any pressure on fabric. In case the stain penetrates the fabric, rub gently with a damp sponge and if necessary, use a neutral soap to be well rinsed with tepid water and a clean sponge.

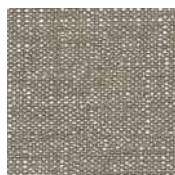
Macchie oleose - Grasso, salsa/ Oily stains - Grease, sauce
Tamponare con carta assorbente o panno asciutto senza eccessiva pressione sul tessuto. In caso di penetrazione della macchia, strofinare con spugna umida, se necessario usare del sapone neutro da risciacquare abbondantemente con acqua tiepida e spugna pulita. Dab the stain using blotting paper or a dry cloth and avoid any pressure on fabric. In case the stain penetrates the fabric, rub gently with a damp sponge and if necessary, use a neutral soap to be well rinsed with tepid water and a clean sponge.

Penna e pennarelli / Pens and drawing pens
Agire prima che si asciughi l'inchiostro, passando sulla macchia alcol diluito in acqua, lavare poi con spugna e detersivo neutro per rimuovere l'alcol. Before the ink becomes dry, pass on the stain alcohol diluted in water, wash with sponge and neutral soap to remove the mark.

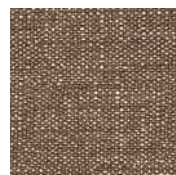
In caso di permanenza della macchia lavare in lavatrice come da norma di manutenzione. In case marks and halos remain, it is recommended to machine wash as per cleaning instructions.



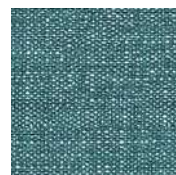
Bilia 25
Pant. 11-4301



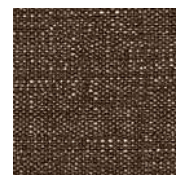
Bilia 07
Pant. 16-0906



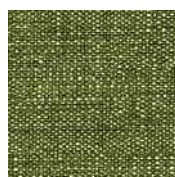
Bilia 21
Pant. 17-1321



Bilia 66
Pant. 17-4728



Bilia 84
Pant. 19-1218



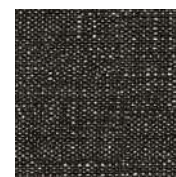
Bilia 38
Pant. 16-0435



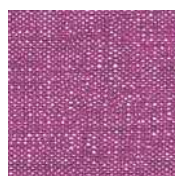
Bilia 28
Pant. 14-1036



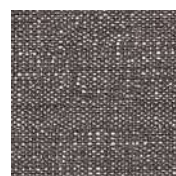
Bilia 31
Pant. 16-0000



Bilia 22
Pant. 191-0303



Bilia 105
Pant. 18-3230



Bilia 104
Pant. 17-500



Bilia 12
Pant. 19-1663

B. Brando

Composizione/
Composition **100 % CO**

Altezza/
Width **140 cm**

Peso/
Weight **(± 5%)
390 g/m²**

Resistenza alla luce/
Colour fastness to light Scuri/ Dark
4/5

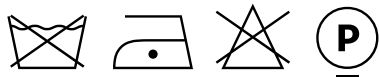
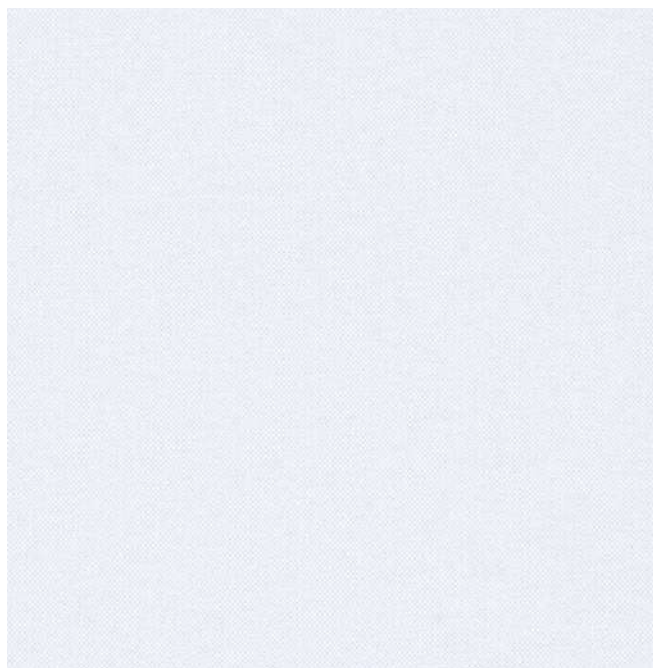
Martindale **25.000**

Resistenza del colore al lavaggio/
Colour fastness to washing **4**

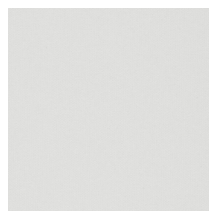
Ignifugo
Fireproof **no**

Idrorepellente
Waterproof **no**

Antimacchia
Stain resistant **no**



Brando 01
Pant. 11-4800



Brando 02
Pant. 11-0604



Brando 03
Pant. 13-0607



Brando 04
Pant. 13-1014



Brando 05
Pant. 16-0906



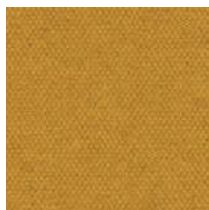
Brando 06
Pant. 19-0814



Brando 07
Pant. 17-0510



Brando 08
Pant. 15-0538



Brando 11
Pant. 15-1142



Brando 12
Pant. 17-1464



Brando 14
Pant. 19-1557

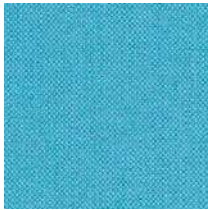


Brando 18
Pant. 19-2431

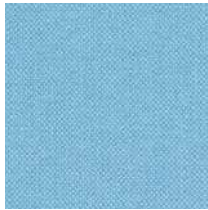


Brando 20
Pant. 18-3615

B. Brando



Brando 22
Pant. 16-4725



Brando 23
Pant. 15-4323



Brando 24
Pant. 17-5025



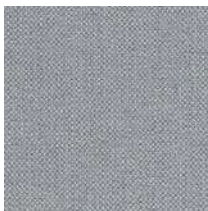
Brando 25
Pant. 18-4141



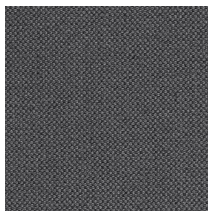
Brando 26
Pant. 19-4118



Brando 27
Pant. 19-3933



Brando 28
Pant. 17-1501



Brando 29
Pant. 18-0201



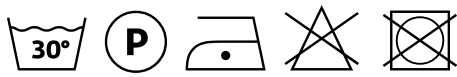
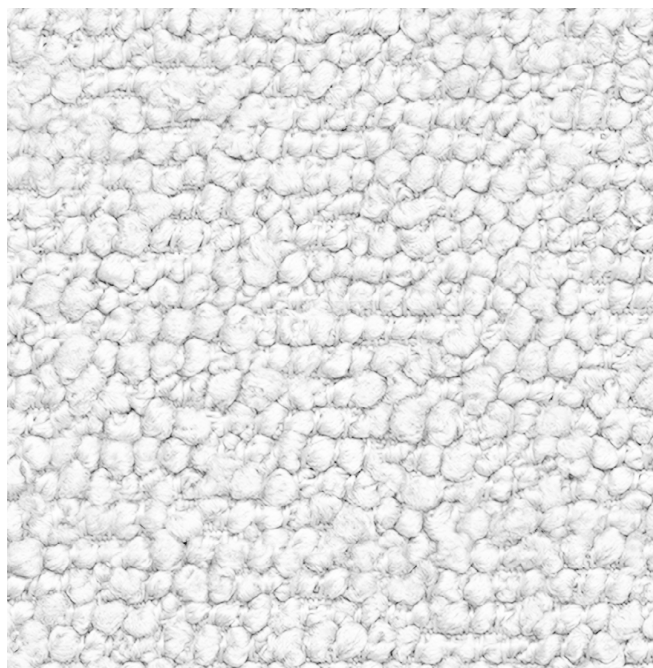
Brando 30
Pant. 19-4205



Brando 33
Pant. 19-1111

B. Crystal

Composizione/ Composition	100% PL
Altezza/ Width	140 cm
Peso/ Weigt	(± 4%) 575 g/m2
Resistenza alla luce/ Colour fastness to light	4-5
Martindale	>100.000
Resistenza del colore al lavaggio/ Colour fastness to washing	A secco 4/5 Ad umido 4 Rubbing (dry) Rubbing (wet)
Ignifugo/ Fireproof	no
Idrorepellente/ Waterproof	si
Antimacchia/ Stain resistant	no



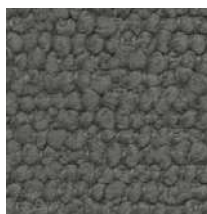
Crystal 100
Pant. 11-4800



Crystal 400
Pant. 12-5202



Crystal 602
Pant. 17-1210



Crystal 601
Pant. 16-4402



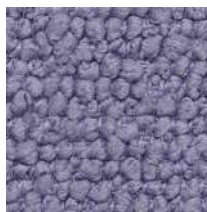
Crystal 901
Pant. 18-1336



Crystal 900
Pant. 15-1316



Crystal 001
Pant. 14-2305



Crystal 003
Pant. 16-3810



Crystal 500
Pant. 14-0647



Crystal 804
Pant. 14-0418



Crystal 800
Pant. 14-4908



Crystal 803
Pant. 18-5121



Crystal 701
Pant. 17-3923



Crystal 703
Pant. 19-4118

B. Erba

Composizione/ Composition	100%PP
Altezza/ Width	140 cm
Peso/ Weight	(± 5%) 450 g/m²
Resistenza alla luce/ Colour fastness to light	>4-5
Martindale	≥40.000
Resistenza del colore al lavaggio/ Colour fastness to washing	5
Ignifugo/ Fireproof	no
Idrorepellente/ Waterproof	no
Antimacchia/ Stain resistant	si

Nel caso di macchie secche o particolarmente resistenti si può agire localmente trattando la macchia con uno smacchiatore attivo, sfregare leggermente e lasciar agire qualche minuto, dopodichè effettuare il normale lavaggio in lavatrice a 30°/ Far dry or stubborn stains, use a stain remover and rub gently. Set asi de far a fewminutes and then wash as usual in the washing mach i ne at 30°



Erba 007

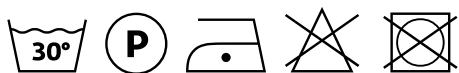


Erba 022

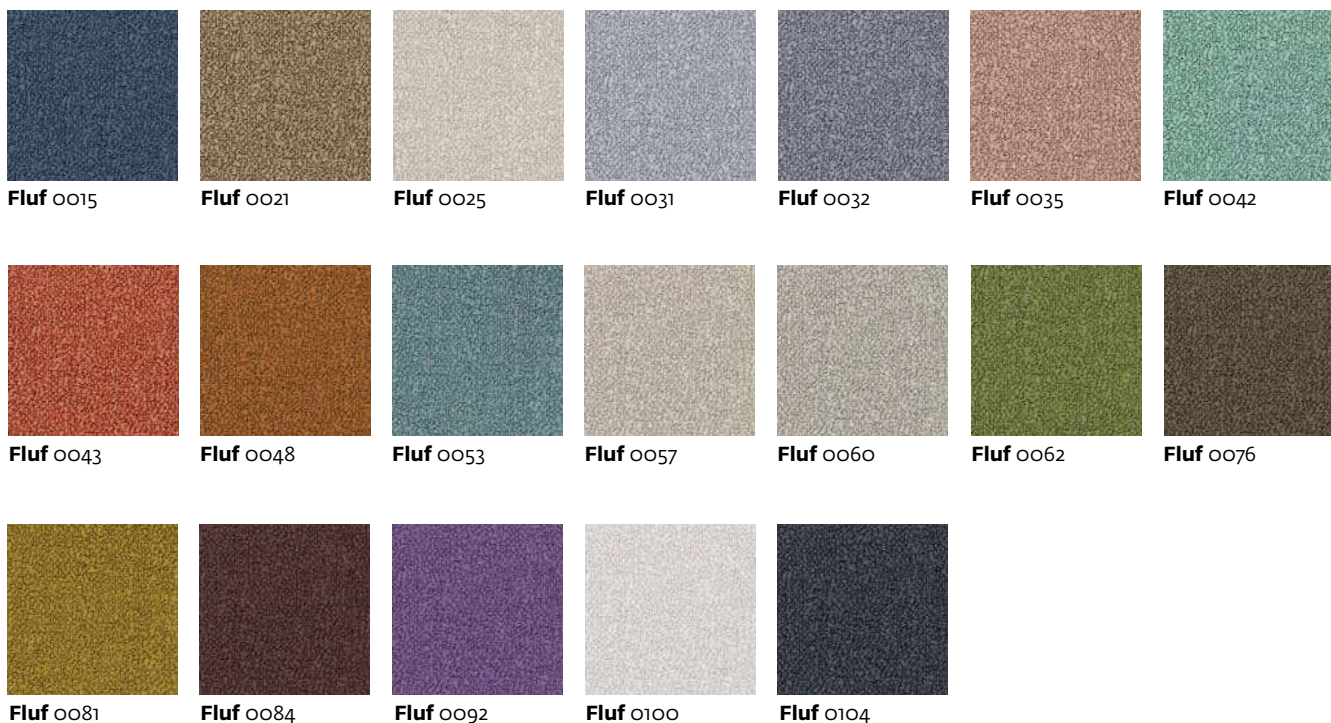
Erba 026

B. Fluf

Composizione/ Composition	100% PL
Altezza/ Width	140cm
Peso/ Weight	(± 5 %) 440 g/m²
Resistenza alla luce/ Colour fastness to light	4
Martindale	30.000
Resistenza del colore al lavaggio/ Colour fastness to washing	4
Ignifugo/ Fireproof	no
Idrorepellente/ Waterproof	si
Antimacchia/ Stain resistant	si
Residuo restringimento/ Residual shrinkage	2%



Fluf 0010



B. Fresco

Composizione/ Composition	100%PP
Altezza/ Width	140 cm
Peso/ Weight	(± 5%) 490 g/m²
Resistenza alla luce/ Colour fastness to light	>4-5
Martindale	≥40.000
Resistenza del colore al lavaggio/ Colour fastness to washing	5
Ignifugo/ Fireproof	no
Idrorepellente/ Waterproof	no
Antimacchia/ Stain resistant	si

Nel caso di macchie secche o particolarmente resistenti si può agire localmente trattando la macchia con uno smacchiatore attivo, sfregare leggermente e lasciar agire qualche minuto, dopodichè effettuare il normale lavaggio in lavatrice a 30°/ Far dry or stubborn stains, use a stain remover and rub gently. Set asi de far a fewminutes and then wash as usual in the washing mach i ne at 30°



Fresco 007



Fresco 022



Fresco 026

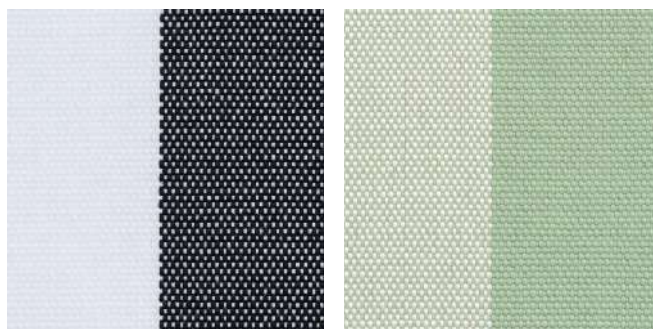
B. Gita

Composizione/ Composition	100%PP
Altezza/ Width	140 cm
Peso/ Weight	(± 5%) 435 g/m²
Resistenza alla luce/ Colour fastness to light	>4-5
Martindale	≥40.000
Resistenza del colore al lavaggio/ Colour fastness to washing	5
Ignifugo/ Fireproof	no
Idrorepellente/ Waterproof	no
Antimacchia/ Stain resistant	si

Nel caso di macchie secche o particolarmente resistenti si può agire localmente trattando la macchia con uno smacchiatore attivo, sfregare leggermente e lasciar agire qualche minuto, dopodichè effettuare il normale lavaggio in lavatrice a 30°/ Far dry or stubborn stains, use a stain remover and rub gently. Set asi de far a fewminutes and then wash as usual in the washing mach i ne at 30°



Gita 007

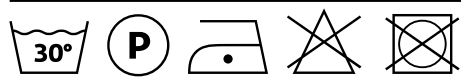
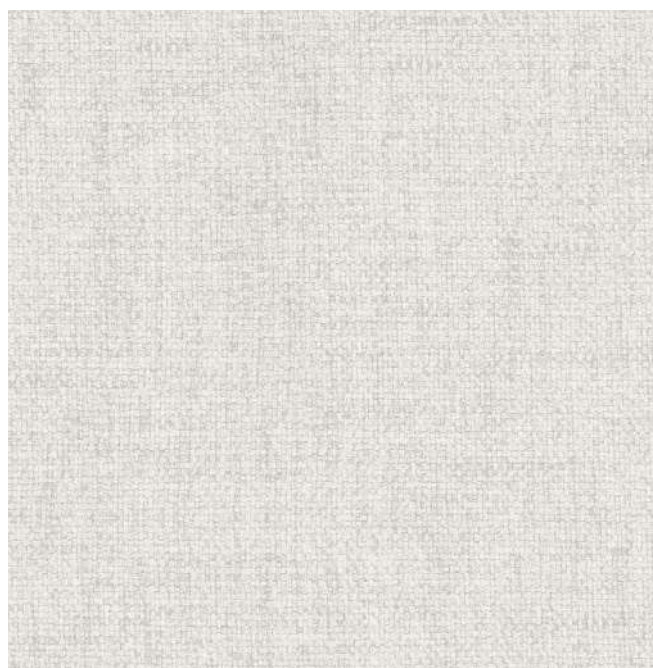


Gita 022

Gita 026

B. Joint

Composizione/ Composition	100% PL
Altezza/ Width	140 cm
Peso/ Weight	(± 4%) 375 g/m²
Resistenza alla luce/ Colour fastness to light	4
Martindale	60.000
Resistenza del colore al lavaggio/ Colour fastness to washing	4/5
Ignifugo/ Fireproof	no
Idrorepellente/ Waterproof	si
Antimacchia/ Stain resistant	si
Ritiro/ Shrinkage	0%



Joint 111



B. Mare

Composizione/
Composition **100%PP**

Altezza/
Width **140 cm**

Peso/
Weight **(± 5%)
435 g/m²**

Resistenza alla luce/
Colour fastness to light **>4-5**

Martindale **≥40.000**

Resistenza del colore al lavaggio/
Colour fastness to washing **5**

Ignifugo/
Fireproof **no**

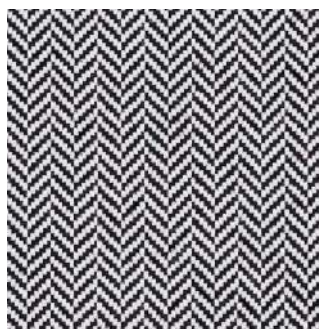
Idrorepellente/
Waterproof **no**

Antimacchia/
Stain resistant **si**

Nel caso di macchie secche o particolarmente resistenti si può agire localmente trattando la macchia con uno smacchiatore attivo, sfregare leggermente e lasciar agire qualche minuto, dopodichè effettuare il normale lavaggio in lavatrice a 30°/ Far dry or stubborn stains, use a stain remover and rub gently. Set asi de far a fewminutes and then wash as usual in the washing mach i ne at 30°



Mare 007



Mare 022



Mare 026

B. Mira



Composizione/ Composition	100 % PP
Altezza/ Width	140 cm
Peso/ Weigt	(± 5%) 271 g/m²
Resistenza alla luce/ Colour fasteness to light	4
Martindale	>30.000
Resistenza del colore al lavaggio/ Colour fasteness to washing	4/5
Ritiro/ Shrinkge	2%
Ignifugo/ Fireproof	no
Idrorepellente Waterproof	no
Antimacchia Stain resistant	si

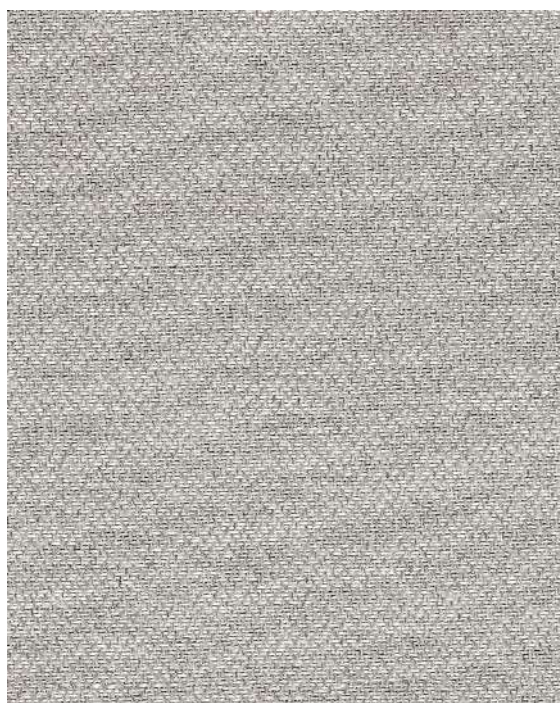
Norme di smacchiatura/ Cleaning instructions Tamponare tempestivamente i liquidi con panno asciutto o spazzolare lo sporco secco. Dab promptly the fallen liquids with a dry cloth or brush gently the dry dirt.

Macchie acquose - Bibite, caffè, vino/ Liquid stains - Drink, coffe, wine
Asportare i liquidi con carta assorbente o panno asciutto senza esercitare eccessiva pressione sul tessuto. In caso di penetrazione della macchia, strofinare con spugna umida, se necessario usare del sapone neutro da risciacquare abbondantemente con acqua tiepida e spugna pulita. Remove the stain using blotting paper or a dry cloth and avoid any pressure on fabric. In case the stain penetradet the fabric, rub gently with a damp sponge and if necessary, use a neutral soap to be well rinsed with tepid water and a clean sponge.

Macchie oleose - Grasso, salse/ Oily stains - Grease, sauce
Tamponare con carta assorbente o panno asciutto senza eccessiva pressione sul tessuto. In caso di penetrazione della macchia, strofinare con spugna umida, se necessario usare del sapone neutro da risciacquare abbondantemente con acqua tiepida e spugna pulita. Dab the stain using blotting paper or a dry cloth and avoid any pressure on fabric. In case the stain penetradet the fabric, rub gently with a damp sponge and if necessary, use a neutral soap to be well rinsed with tepid water and clean sponge.

Penna e pennarelli / Pens and drawing pens
Agire prima che si asciughi l'inchiostro, passando sulla macchia alcol diluito in acqua, lavare poi con spugna e detersivo neutro per rimuovere l'alone. Before the ink becomes dry, pass on the stain alcohol diluted in water, wash with sponge and neutral soap to remove the mark.

In caso di permanenza della macchia lavare in lavatrice come da norma di manutenzione. In case marks and halos remain, it is recommended to machine wash as per cleaning instructions.



Mira 25



Mira 07



Mira 21



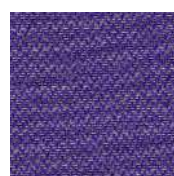
Mira 66



Mira 84



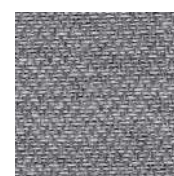
Mira 38



Mira 45



Mira 28



Mira 31



Mira 105



Mira 32



Mira 12

C. Aida

Composizione/ Composition	100% PL
Altezza/ Width	140 cm
Peso/ Weigt	(± 5 in greggio) 810 g/m²
Resistenza alla luce/ Colour fastness to light	4/5
Martindale	100.000
Resistenza del colore al lavaggio/ Colour fastness to washing	4/5
Ignifugo/ Fireproof	no
Idrorepellente/ Waterproof	si
Antimacchia/ Stain resistant	si

Utilizzare un panno morbido inumidito con la soluzione di acqua e sapone e pulire delicatamente la macchia fino a completa rimozione, risciacquare con acqua pura e asciugare con un panno pulito. /Use a soft cloth moistened with the water solution and soap and gently clean the stain until completely removed, rinse with pure water and dry with a clean cloth.



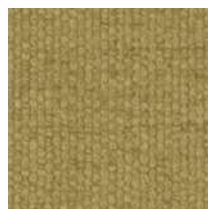
Aida 01
Pant.11-0604



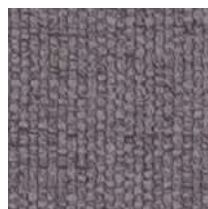
Aida 04
Pant. 15-0000



Aida 05
Pant. 17-0205



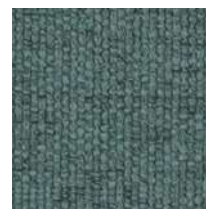
Aida 11
Pant. 14-0837



Aida 18
Pant. 12-2903



Aida 19
Pant. 18-4320



Aida 20
Pant. 16-5106



Aida 21
Pant. 19-4025



Aida 24
Pant. 17-6212



Aida 25
Pant. 15-0318



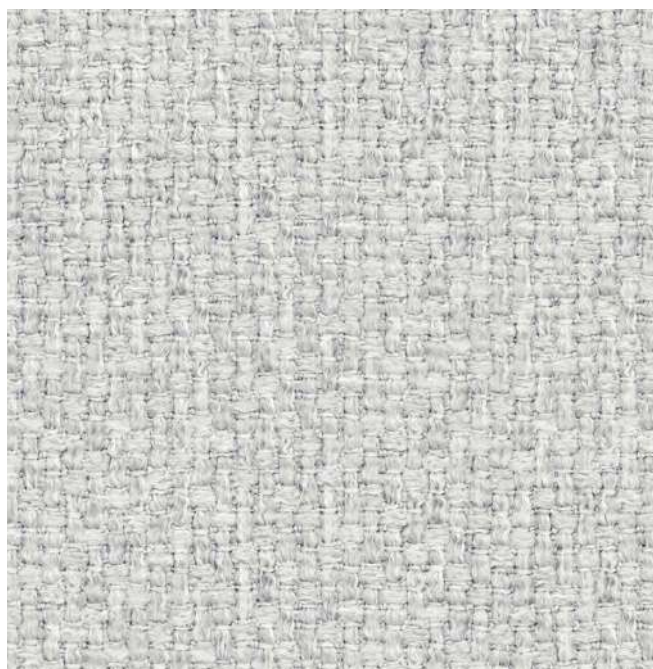
Aida 26
Pant. 13-4303



Aida 28
Pant. 18-4005

C.Bentley

Composizione/ Composition	100% PL
Altezza/ Width	140 cm
Peso/ Weight	(± 4) 410 g/m²
Resistenza alla luce/ Colour fastness to light	4
Martindale	50.000
Resistenza del colore al lavaggio/ Colour fastness to washing	A secco 4/5 Ad umido 4 Rubbing (dry) Rubbing (wet)
Ignifugo/ Fireproof	no
Idrorepellente/ Waterproof	si
Antimacchia/ Stain resistant	no



Bentley 111
Pant. 12-4302



Bentley 408
Pant. 13-0905



Bentley 400
Pant. 13-5304



Bentley 409
Pant. 15-1309



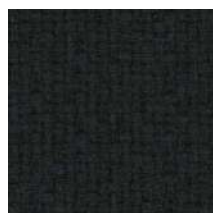
Bentley 411
Pant. 19-0912



Bentley 607
Pant. 14-4203



Bentley 609
Pant. 17-0205



Bentley 610
Pant. 19-4005



Bentley 900
Pant. 14-1312



Bentley 003
Pant. 18-2109



Bentley 006
Pant. 19-3720



Bentley 500
Pant. 16-0947



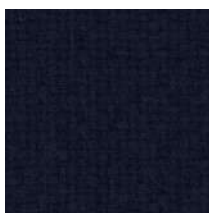
Bentley 801
Pant. 19-5226



Bentley 802
Pant. 17-0510



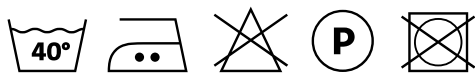
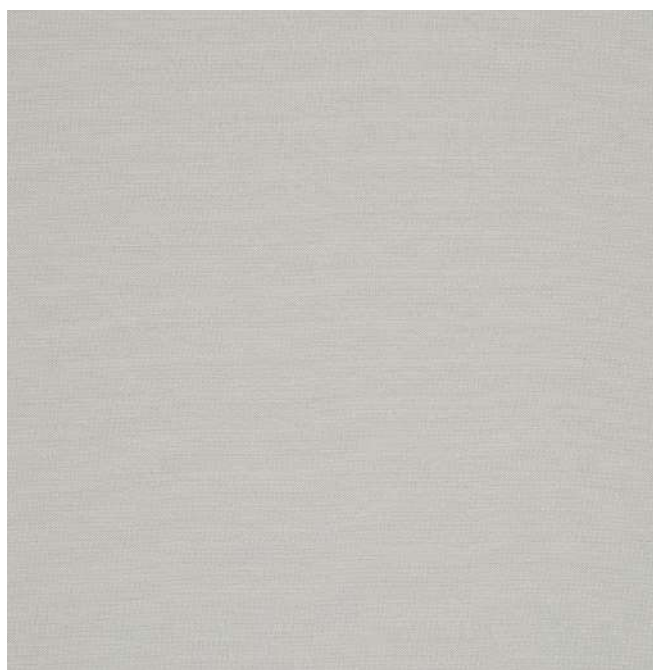
Bentley 701
Pant. 18-3918



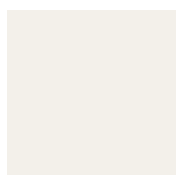
Bentley 705
Pant. 19-3810

C. Panama

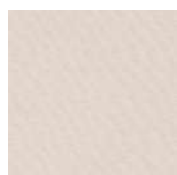
Composizione/ Composition	100% CO
Altezza/ Width	305 cm (± 2cm in greggio)
Peso/ Weigt	(± 5 in greggio) 210 g/m2
Resistenza alla luce/ Colour fastness to light	3/4
Martindale	-
Resistenza del colore al lavaggio/ Colour fastness to washing	5
Ignifugo/ Fireproof	no
Idrorepellente/ Waterproof	no
Antimacchia/ Stain resistant	no
Residuo restringimento/ Residual shrinkge	4%



Panama 117
Pant.14-4201



Panama 320
Pant. 11-0501



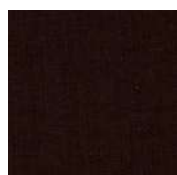
Panama 450
Pant. 12-1403



Panama 119
Pant.15-1305



Panama 116
Pant.18-1112



Panama 780
Pant.19-0814



Panama 409
Pant.14-1036



Panama 38
Pant.16-1255



Panama 355
Pant.18-1660



Panama 361
Pant.19-1650



Panama 786
Pant.18-3615



Panama 570
Pant.18-3715



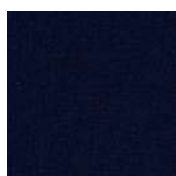
Panama 118
Pant.17-2227



Panama 360
Pant.16-0230



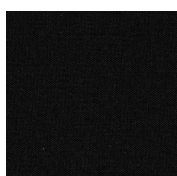
Panama 256
Pant.18-4020



Panama 380
Pant.19-3938



Panama 512
Pant.18-0201



Panama 324
Pant.19-4006

C. Penelope

Composizione/ Composition	100% PL
Altezza/ Width	140 cm
Peso/ Weigt	(± 5%) 350 g/m²
Resistenza alla luce/ Colour fastness to light	Scuri/ Dark 3
Martindale	>100.000
Resistenza del colore al lavaggio/ Colour fastness to washing	Scarico 5 Temperatura dell'acqua 40°
Ignifugo/ Fireproof	no
Idrorepellente/ Waterproof	si
Antimacchia/ Stain resistant	no

Lavaggio Pulire con un panno umido
Care instructions Wipe it with a damp cloth



Penelope 01



Penelope 03



Penelope 05



Penelope 08



Penelope 09



Penelope 12



Penelope 15



Penelope 20



Penelope 23



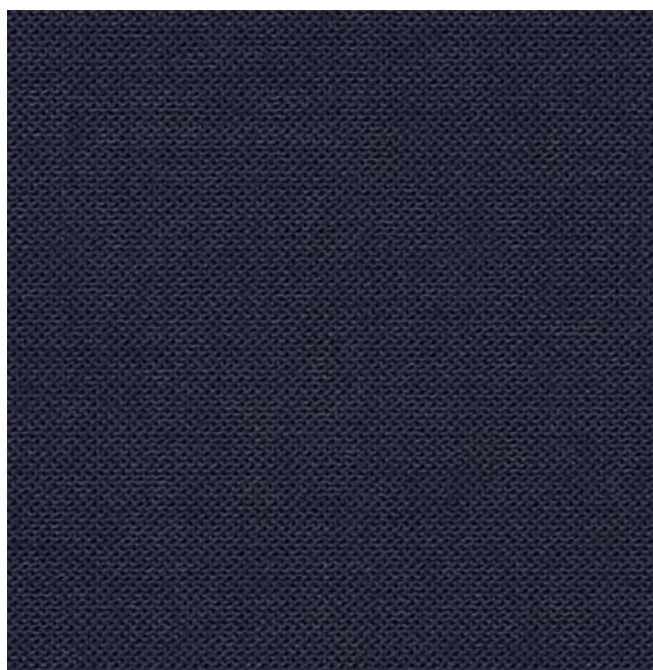
Penelope 25



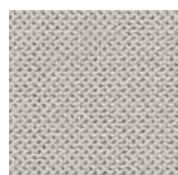
Penelope 27

C. Smile

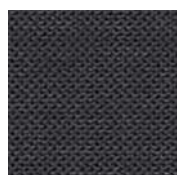
Composizione/ Composition	100% PL
Altezza/ Width	145 cm
Peso/ Weight	(± 5%) 190 g/m²
Resistenza alla luce/ Colour fastness to light	Scuri/ Dark 5
Martindale	>45.000
Resistenza del colore al lavaggio/ Colour fastness to washing	-
Ignifugo/ Fireproof	no
Idrorepellente/ Waterproof	no
Antimacchia/ Stain resistant	no



Smile 3920
Pant.19-3933



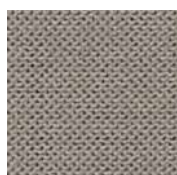
Smile 5282
Pant.14-1106



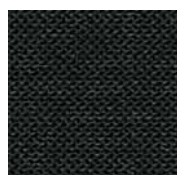
Smile 9000
Pant.18-0201



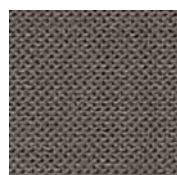
Smile 9104
Pant.11-4800



Smile 9120
Pant.16-1406



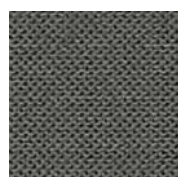
Smile 9303
Pant.19-0303



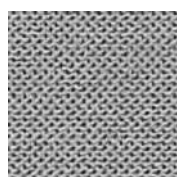
Smile 9306
Pant.17-1506



Smile 9329
Pant.18-4225



Smile 9403
Pant.18-0000



Smile 9802
Pant.16-4402

C. Velluto

Composizione/ Composition	100% PL
Altezza/ Width	145 cm
Peso/ Weight	(± 5 in greggio) 360 g/m²
Resistenza alla luce/ Colour fastness to light	-
Martindale	>45.000
Resistenza del colore al lavaggio/ Colour fastness to washing	5
Ignifugo/ Fireproof	no
Idrorepellente/ Waterproof	no
Antimacchia/ Stain resistant	no



Velluto 1
Pant. 16-1107



Velluto 2
Pant. 15-1309



Velluto 7
Pant. 19-1934



Velluto 8
Pant. 18-0940



Velluto 9
Pant. 18-0430



Velluto 10



Velluto 11



Velluto 12



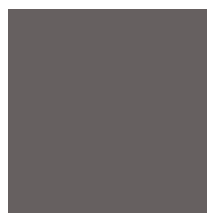
Velluto 13
Pant. 17-5513



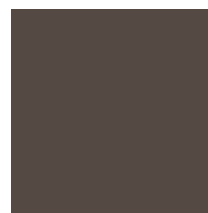
Velluto 14
Pant. 16-1506



Velluto 15
Pant. 16-4402



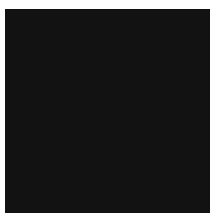
Velluto 16
Pant. 18-0000



Velluto 17
Pant. 18-0403



Velluto 19
Pant. 19-4305



Velluto 20
Pant. 19-4007

AP. Levante Leather



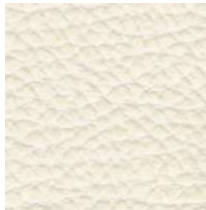
Levante 200
Pant. 11-4800



Levante 211
Pant. 17-1226



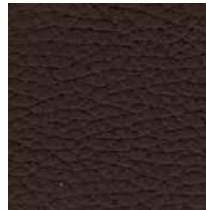
Levante 218
Pant. 16-0000



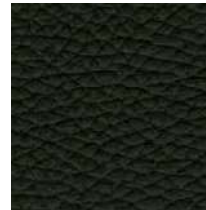
Levante 210
Pant. 12-5202



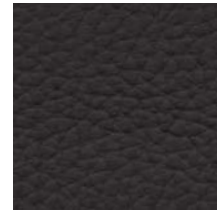
Levante 215
Pant. 18-1110



Levante 212
Pant. 19-1015



Levante 202
Pant. 19-4006



Levante 220
Pant. 18-0403



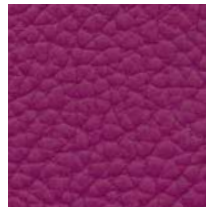
Levante 222
Pant. 19-4241



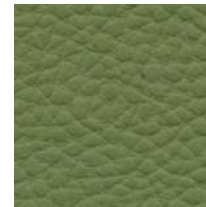
Levante 232
Pant. 14-1307



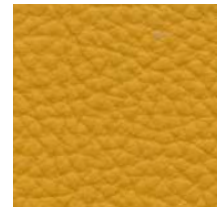
Levante 238
Pant. 17-4408



Levante 216
Pant. 19-2431



Levante 225
Pant. 17-0330



Levante 224
Pant. 15-1050

AP. Levante Leather



		Caratteristiche tecniche/ Technical datasheet			
Tipo di pellame/ Hyde type	Bovino Europeo/ European bovine	Test	Norma/ Method	Valori/ Result	Scala/ Grade
Concia/ Tanning	Al cromo/ Chrome	Sfregamento a secco/ Dry friction	ISO 11640	≥1.000	Cicly/ Cycles
Tintura / Dyeing	Passante/ Penetrating	Sfregamento a umido/ Damp friction	ISO 11640	≥200	Cicly/ Cycles
Rifinitone/ Finishing	Pigmentata/ Pigment	Ancoraggio rifinitone/ Finish locking	ISO 11644	≥2,0 N/ 10 mm	
Superficie/ Surface	Fiore corretto/ Corrected grain	Fatica a flessione/ Crocking fatigue	ISO 5402	≥20.000	Cicly/ Cycles
Spessore/ Thickness	1,4 - 1,6 mm	Solidità alla luce/ Solidity in light	ISO 105-Bo2	≥5	Grigi/ Grey
Taglia media/ Average size	≥4,0 mq				

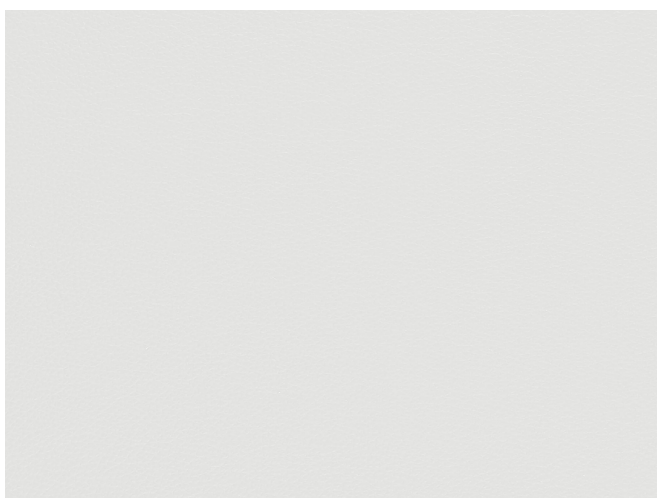
Per quanto riguarda la manutenzione vi informiamo che la nostra pelle è facilmente pulibile con acqua e sapone neutro. Vi rammentiamo che la pelle nei colori chiari è più sensibile allo sporco e richiede una regolare ed attenta pulizia, per evitare che lo sporco venga assorbito e non possa più essere rimosso.

As regards care instructions we inform you our Leather is easily washable with water and neutral soap. We remind you leather in clear colors is more sensitive to dirt and demands a regular and attentive cleaning to avoid dirt to be absorbed and no longer removed.

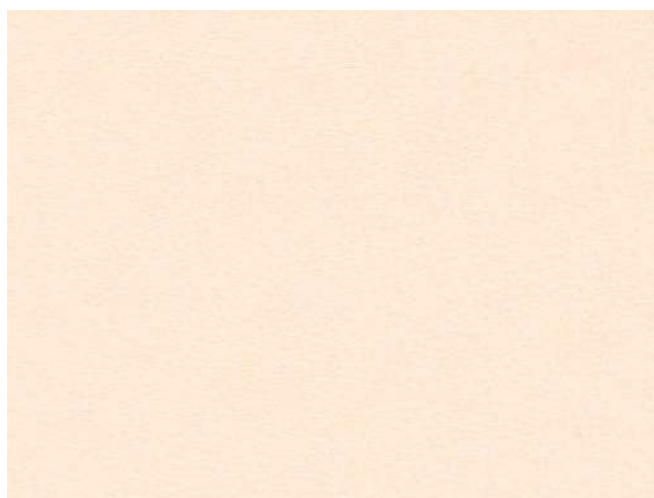
L'ottima qualità della pelle Levante deriva da un' accurata selezione di bovini di origine europea. **Levante Leather** è un fiore corretto. Il procedimento di tintura è passante, nella stessa tinta della rifinitone. La superficie di ciascuna pelle è di circa 4,0 m², lo spessore di 1,4 - 1,6 mm. Tutti i colori sono disponibili con trattamento ignifugo e certificazione UNI9175 e BS 5852 Crib 5 con un minimo di 50 mq.

The excellent quality of Levante leather derives from an accurate selection of European bovine. **Levante Leather** is a corrected grain. Dyeing procedure is penetrating in the same color of the Finishing. Surface of each leather is about 4,0 m², thickness 1,4 - 1,6 mm. Color Folder includes an extraordinary variety of options obtained from a single quality leather. All colors are available with fireproof treatment and UNI9175 certification and BS 5852 Crib 5 with minimum 5,0 sq.m.

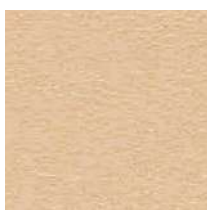
P. Nappa Leather



Neve 117
Pant. 11-4800



Latte 195
Pant. 11-0701



Avena 197
Pant. 14-1113



Lino 197
Pant. 15-6307



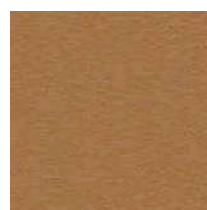
Segale 226
Pant. 16-1212



Visone 190
Pant. 18-1022



Cioccolato 140
Pant. 19-1116



Siena 174
Pant. 17-1045



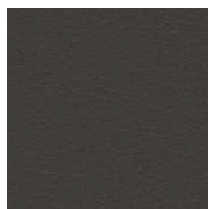
Cuoio 131
Pant. 18-0933



Caffè 189
Pant. 19-1220



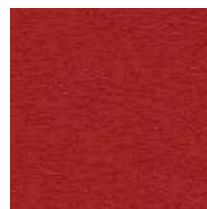
Marmotta 218
Pant. 18-0513



Moretto 147
Pant. 19-0812



Bordeaux 110
Pant. 19-1524



Germanio 113
Pant. 18-1658



Ciclamino 188
Pant. 19-2315



Lillà 102
Pant. 19-2315



Viola 233
Pant. 19-3540



Bouganville 220
Pant. 18-1741



Arancione 149
Pant. 16-1443



Girasole 148
Pant. 14-0760

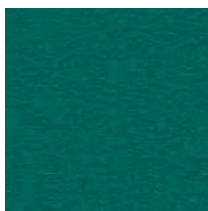
P. Nappa Leather



Giallo oro 209
Pant. 16-0946



Verde 212
Pant. 17-0336



Azteco 196
Pant. 18-4834



Provenza 145
Pant. 18-4029



Bluette 105
Pant. 19-4118



Fiordaliso 227
Pant. 17-4021



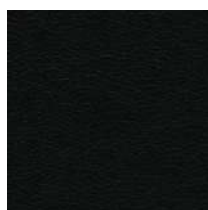
Camoscio 207
Pant. 17-1310



Peltro 202
Pant. 17-501



Beola 112
Pant. 18-0306



Nero 101
Pant. 19-0303

Tipo di pellame/
Hyde type

Bovino Europeo/
European bovine

Concia/
Tanning

Al cromo/
Chrome

Tintura /
Dyeing

Passante/
Penetrating

Rifinitone/
Finishing

Poliuretano/
Polyurethane

Superficie/
Surface

Fiore liscio/
Smooth grain

Spessore/
Thickness

1,0 -1,2 mm

Taglia media/
Average size

≥5,0 mq

Per quanto riguarda la manutenzione vi informiamo che la nostra pelle è facilmente pulibile con acqua e sapone neutro. Vi rammentiamo che la pelle nei colori chiari è più sensibile allo sporco e richiede una regolare ed attenta pulizia, per evitare che lo sporco venga assorbito e non possa più essere rimosso.

As regards care instructions we inform you our Leather is easily washable with water and neutral soap. We remind you leather in clear colors is more sensitive to dirt and demands a regular and attentive cleaning to avoid dirt to be absorbed and no longer removed.

Caratteristiche tecniche/ Technical datasheet

Test

Norma/ Method

Valori/ Result

Scala/ Grade

Sfregamento a secco/
Dry friction

ISO 11640

≥1.000

Cicly/ Cycles

Sfregamento a umido/
Damp friction

ISO 11640

≥250

Cicly/ Cycles

Resistenza al fuoco/
Fire resistance

ISO 1021/1-2

Nessuna combustione/
No ignition

Ancoraggio rifinitone/
Finish locking

ISO 11644

≥3,0

N/cm2

Fatica a flessione/
Croaking fatigue

ISO 5402

≥50.000

Cicly/ Cycles

Solidità alla luce/
Solidity in light

ISO 105-Bo2

>4

Blu / Blue

Invecchiamento da calore/
Heat ageing

ISO 17228

≥4

Grigi / Grey

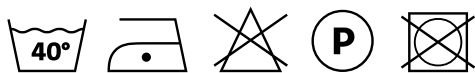
L'ottima qualità della nappa leather deriva da un'accurata selezione di bovini di origine europea. **Nappa leather** è un fiore liscio nappato. Il procedimento di tintura è passante, nella stessa tinta della rifinitone. La superficie di ciascuna pelle è di circa 5,0 m2, lo spessore di 1,0-1,2 mm. La cartella colori comprende un'eccezionale serie di varianti, ottenute su un'unica qualità di pelle. La gamma cromatica, così ampia ed attuale, distingue tale pelle per l'eccellente possibilità di utilizzo, legato alle più esigenti proposte di design. Tutti i colori sono disponibili con trattamento ignifugo e certificazione UNI9175 e BS 5852 Crib 5 con un minimo di 50 mq.

The excellent quality of **Nappa leather** derives from an accurate selection of European bovine. Nappa leather is a smooth grain one. Dyeing procedure is penetrating in the same color of the Finishing. Surface of each leather is about 5,0 m2, thickness 1,0-1,2 mm. Color Folder includes an extraordinary variety of options obtained from a single quality leather. A so extended and actual chromatic gamma distinguishes this Nappa Leather for an excellent possibility of application and solve all design demands. All colors are available with fireproof treatment and UNI9175 certification and BS 5852 Crib 5 with minimum 5,0 sq.m.

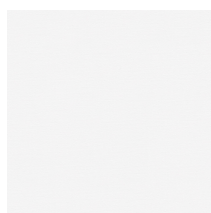
Lycra - Special Fabrics and Materials



Composizione/ Composition	80% PA - 20%EA
Altezza/ Width	150 cm
Peso/ Weigt	(± 5%) 190 g/m2
Resistenza alla luce/ Colour fastness to light	Scuri/ Dark 6/7
Martindale	25.000
Resistenza del colore al lavaggio/ Colour fastness to washing	4/5
Ignifugo Fireproof	no
Idrorepellente Waterproof	no
Antimacchia Stain resistant	no



Lycra 701
Pant. 19-3938



Lycra 101
Pant. 11-0601



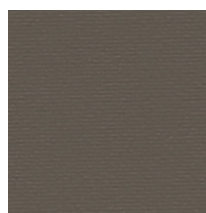
Lycra 702
Pant. 16-4535



Lycra 305
Pant.19-1763



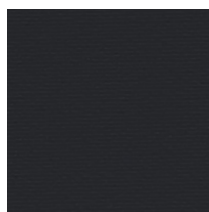
Lycra 703
Pant. 18-4247



Lycra 406
Pant. 18-1016



Lycra 600
Pant. 16-4402



Lycra 605
Pant. 19-3908

Lycra Velluto - Special Fabrics and Materials

Composizione/ Composition	85% PA - 15 % EA
Altezza/ Width	140 cm
Peso/ Weigt	(± 5%) 220 g/m2
Resistenza alla luce/ Colour fastness to light	Scuri/ Dark - Chiari/ Light >5 2-3
Martindale	10.000
Resistenza del colore al lavaggio/ Colour fastness to washing	4/5
Ignifugo Fireproof	no
Idrorepellente Waterproof	no
Antimacchia Stain resistant	no



Lycra Velluto 9194
Pant. 18-0201



Lycra Velluto
9260
Pant. 14-4201



Lycra Velluto
50003
Pant. 19-2520



Lycra Velluto
60168
pant. 19-4052

N-Zip - Special Fabrics and Materials

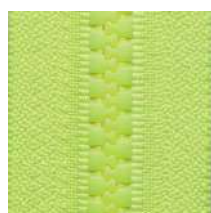


Composizione/ Composition

Nastro/ Zipper tape	Poliestrere
Dente/ Tooth	Resina acetlica pressofusa Die-cast acetal resin
Cursore/ Slider	Lega a base Zinco Zinc based alloy
Quote geometriche/ Geometric dimensions	
Larghezza Catena (A) Chain width	7,40 mm
Spessore catena (B) Chain thickness	3,00 mm
Passo (C) Step of chain	24,04 (n° denti in 100 mm) 24,04 (n° teeth in 100 mm)
Prove dinamometriche/ Dynamometric tests	
Sforzo Catena Trasversale [N] (D) Transverse chain effort	400 valore di garanzia 400 warranty value
Sforzo Cursore Bloccato [N] Blocked slider effort (cursore superiore/ upper slider) (E)	50 valore di garanzia 50 warranty value



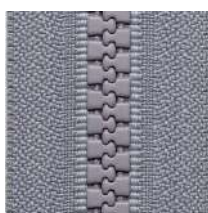
N-Zip 550



N-Zip Y 287



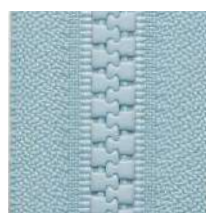
N-Zip 030



N-Zip 154



N-Zip 005



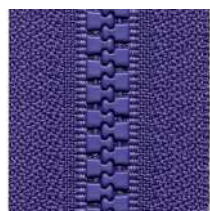
N-Zip Y 204



N-Zip 875



N-Zip 060



N-Zip 559



N-Zip Y 016



N-Zip 040

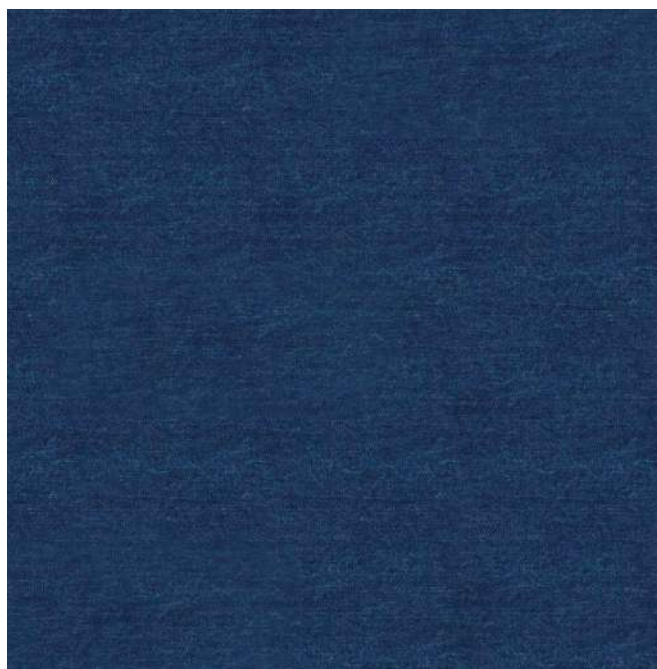


N-Zip 580

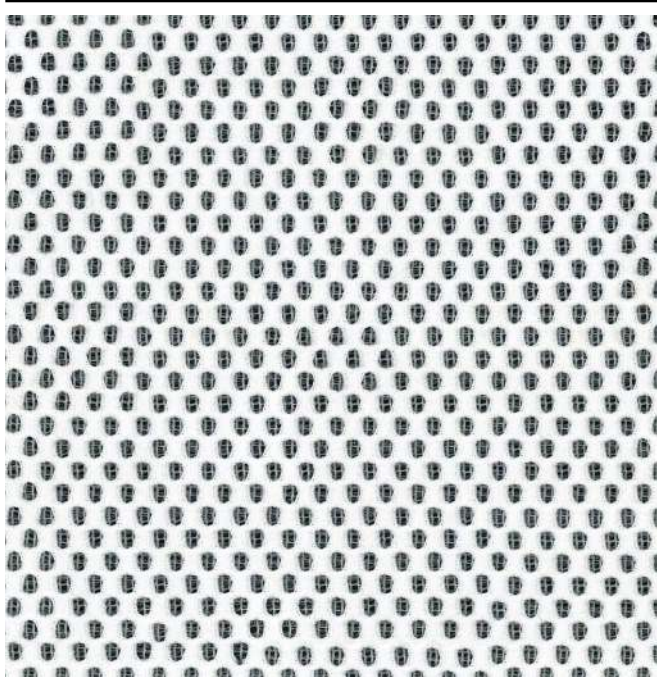
Pop up Inspiration



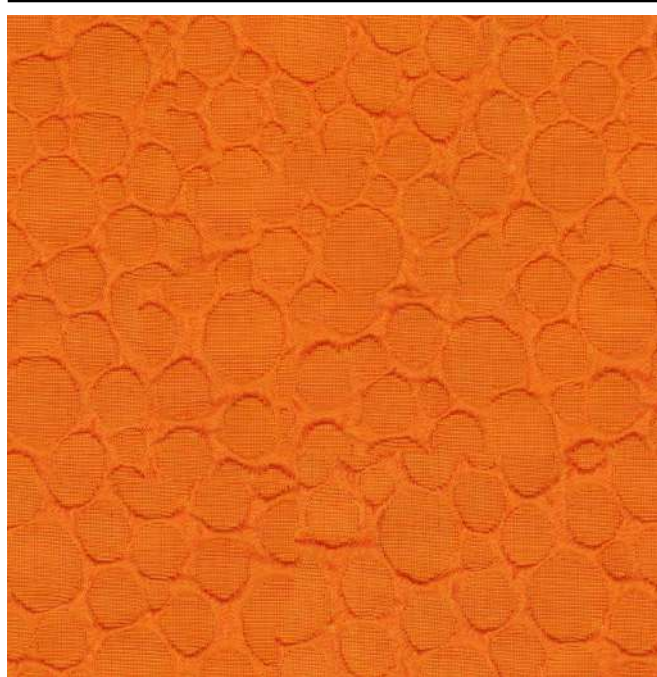
Leonte 1



Leonte 2
Jeans



Cama 1



Cama 2

