

# CRESTLINE® 6 ROLL DAMPENING SYSTEM

Ryobi 3302M, Itek 3985  
A.B. Dick 9985

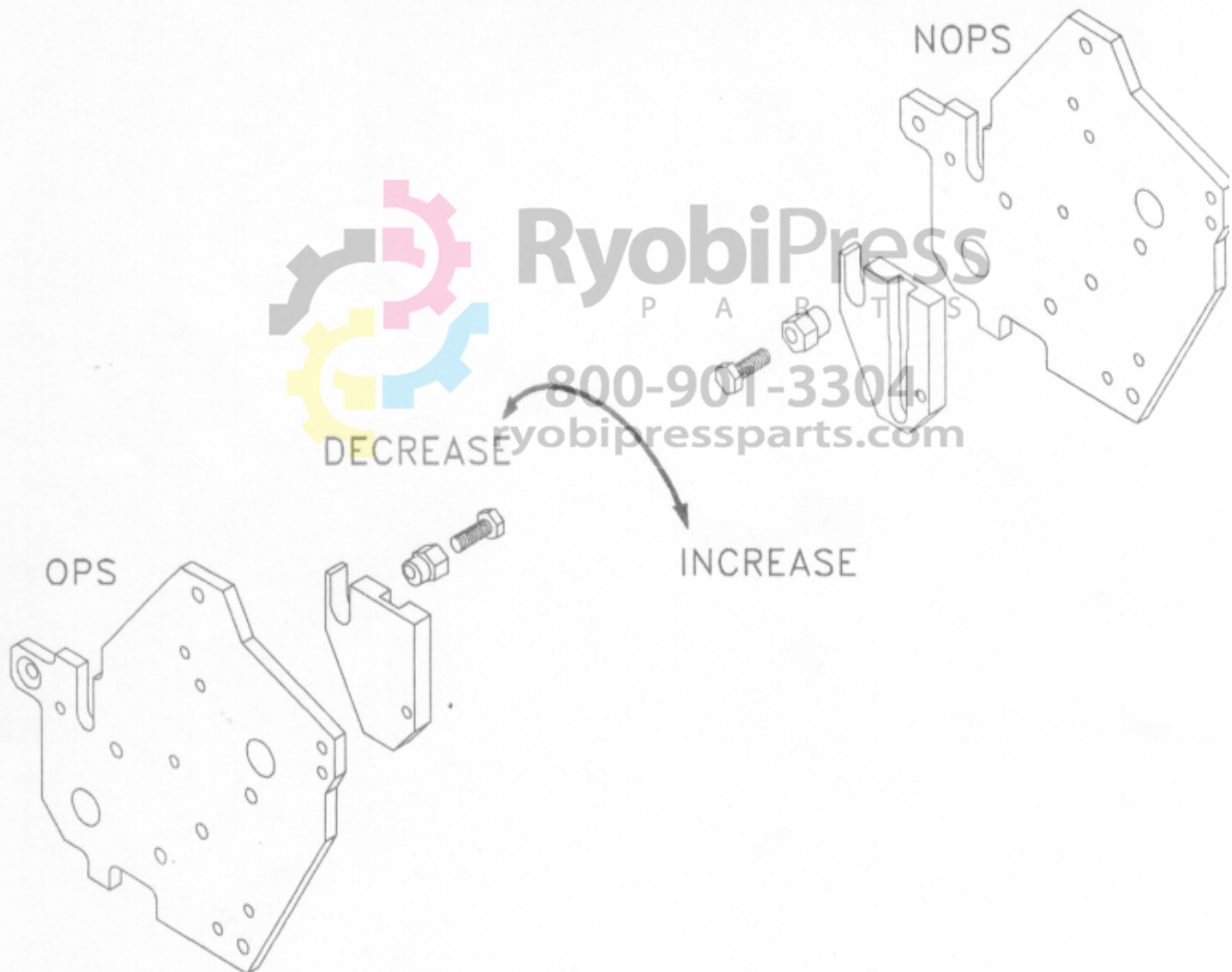


RyobiPress  
P A R T S

800-901-3304  
ryobipressparts.com

**ACCEL** ®  
*Graphic Systems*

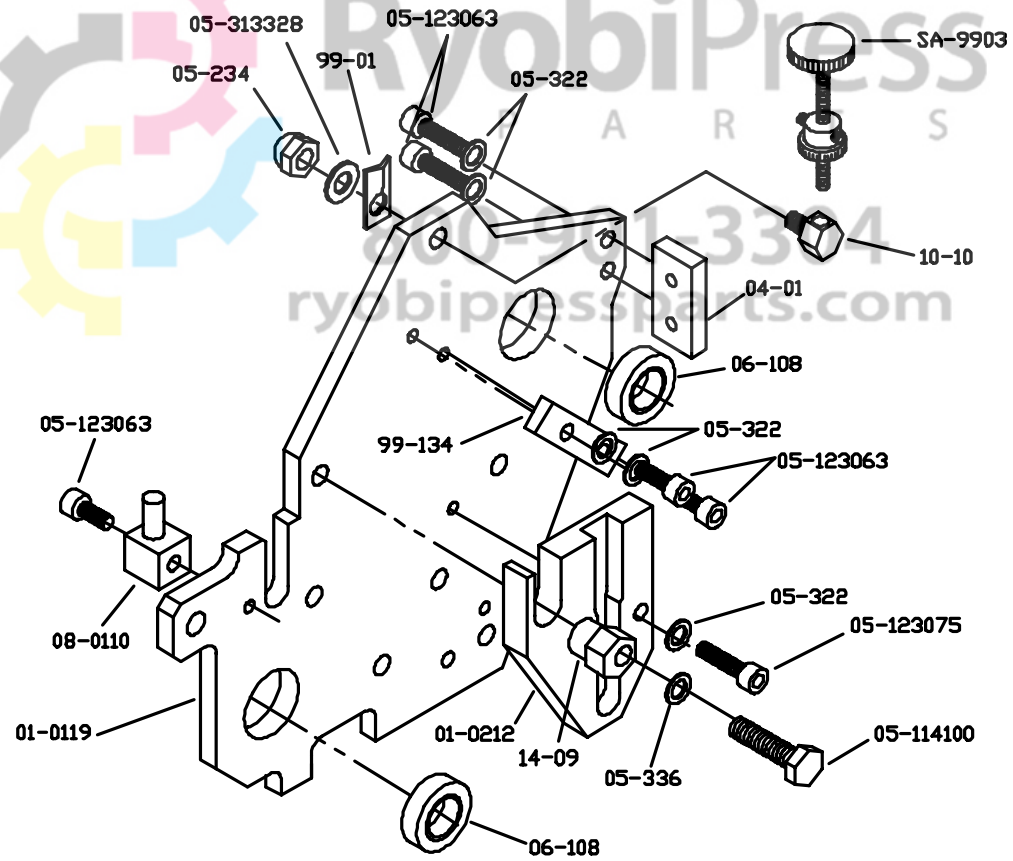
RYOBI 3302/ITEK 3985/AB DICK 3985



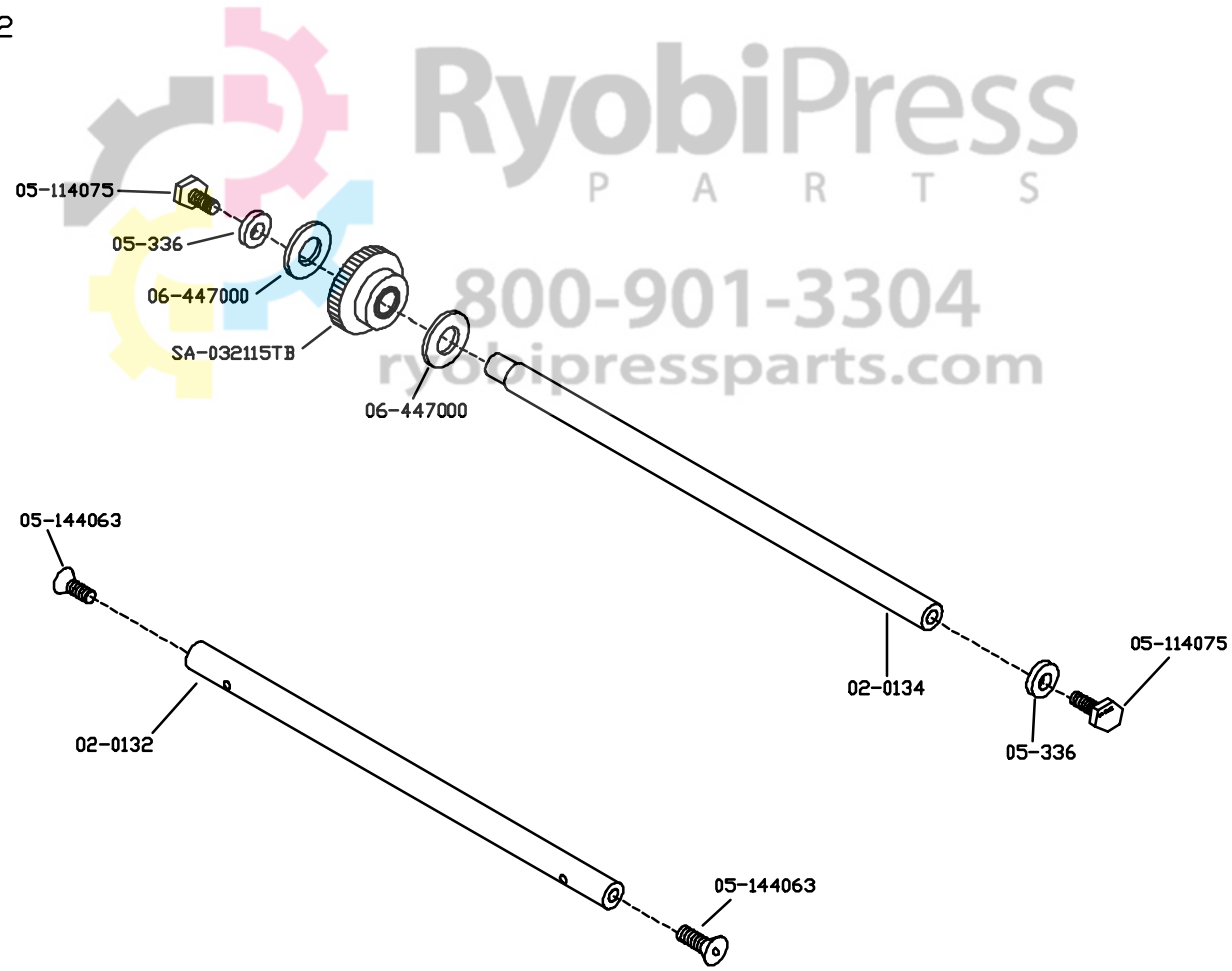
**When adjusting the upper intermediate roll to the metering roll, turn the eccentrics in the direction indicated to set the stripe. The stripe between the intermediate and metering roll should be 1/8".**



## RY332-NOPS



RY332

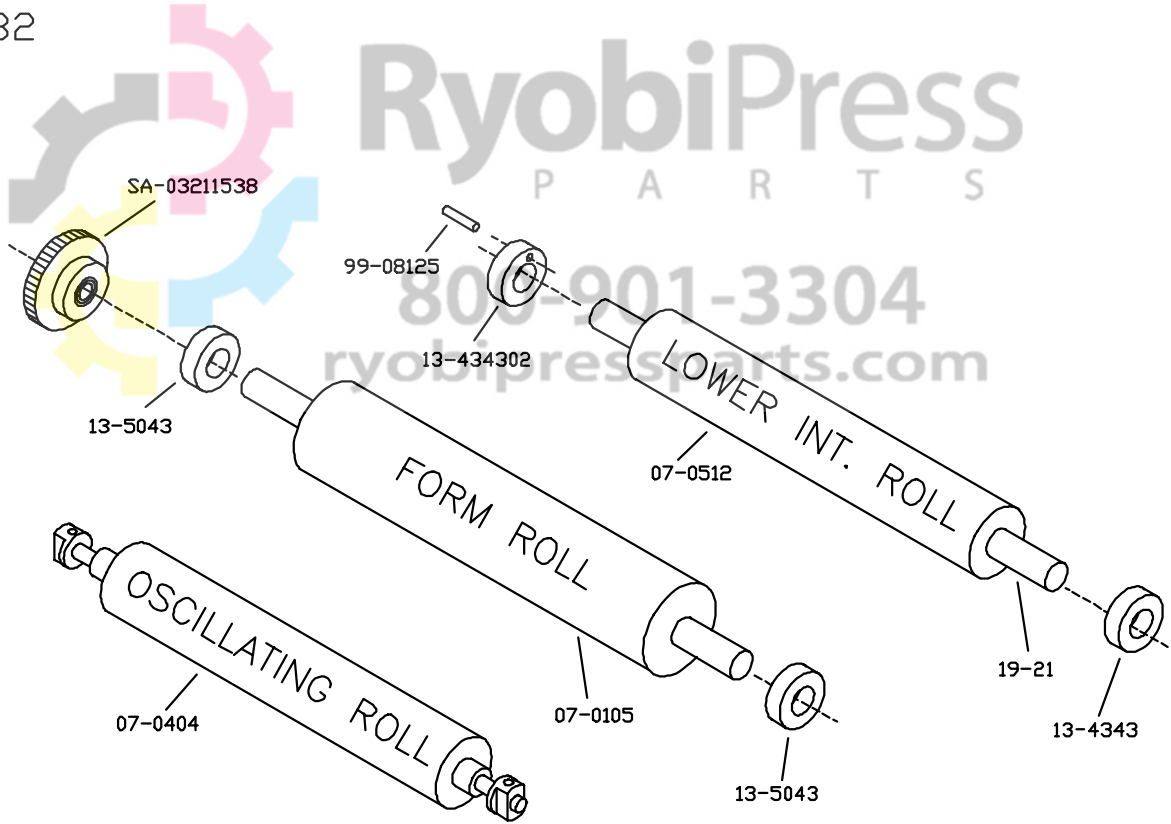


RyobiPress  
P A R T S

800-901-3304  
ryobipressparts.com

BLOW6, 7-93

RY332

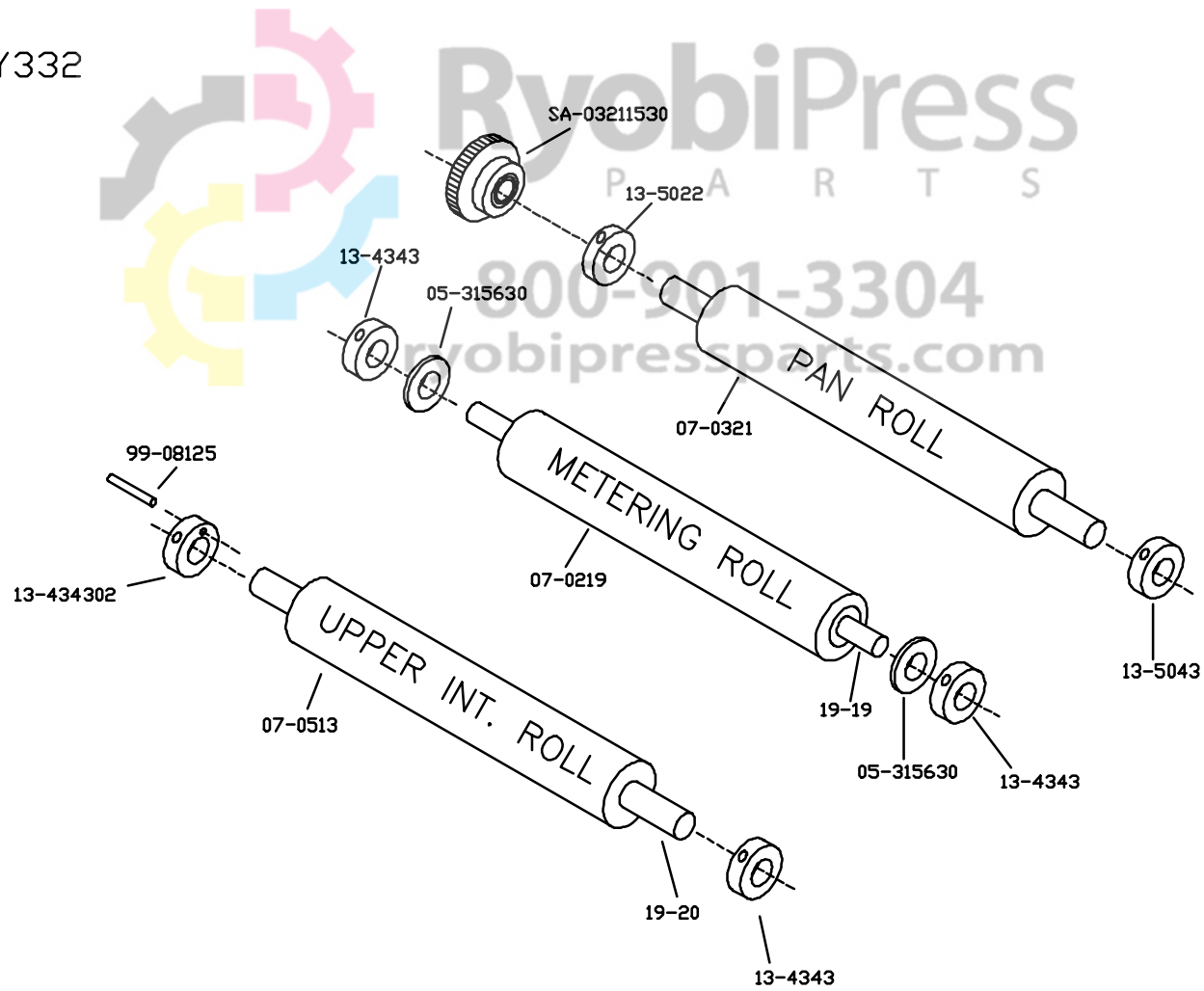


RyobiPress  
P A R T S

800-901-3304

ryobipressparts.com

RY332

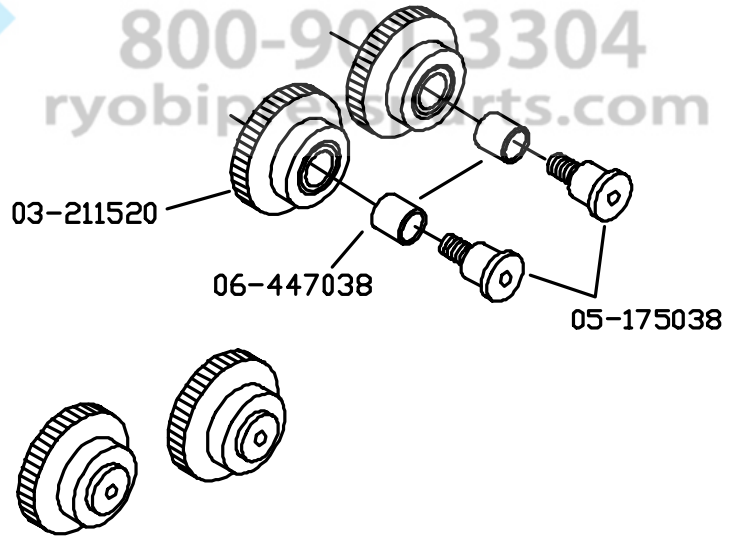


RY332-NOPS



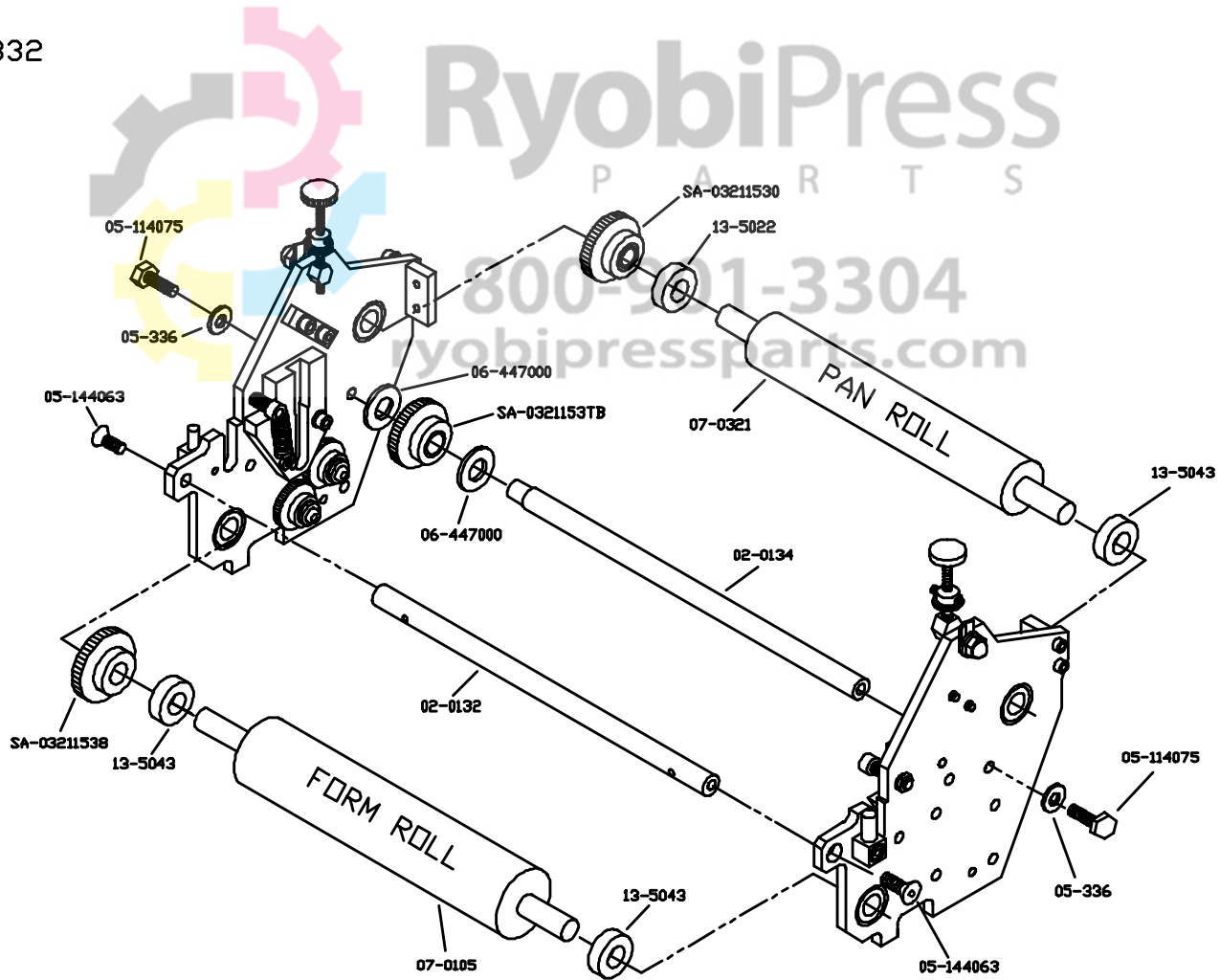
RyobiPress  
P A R T S

800-900-3304  
ryobiparts.com





RY332



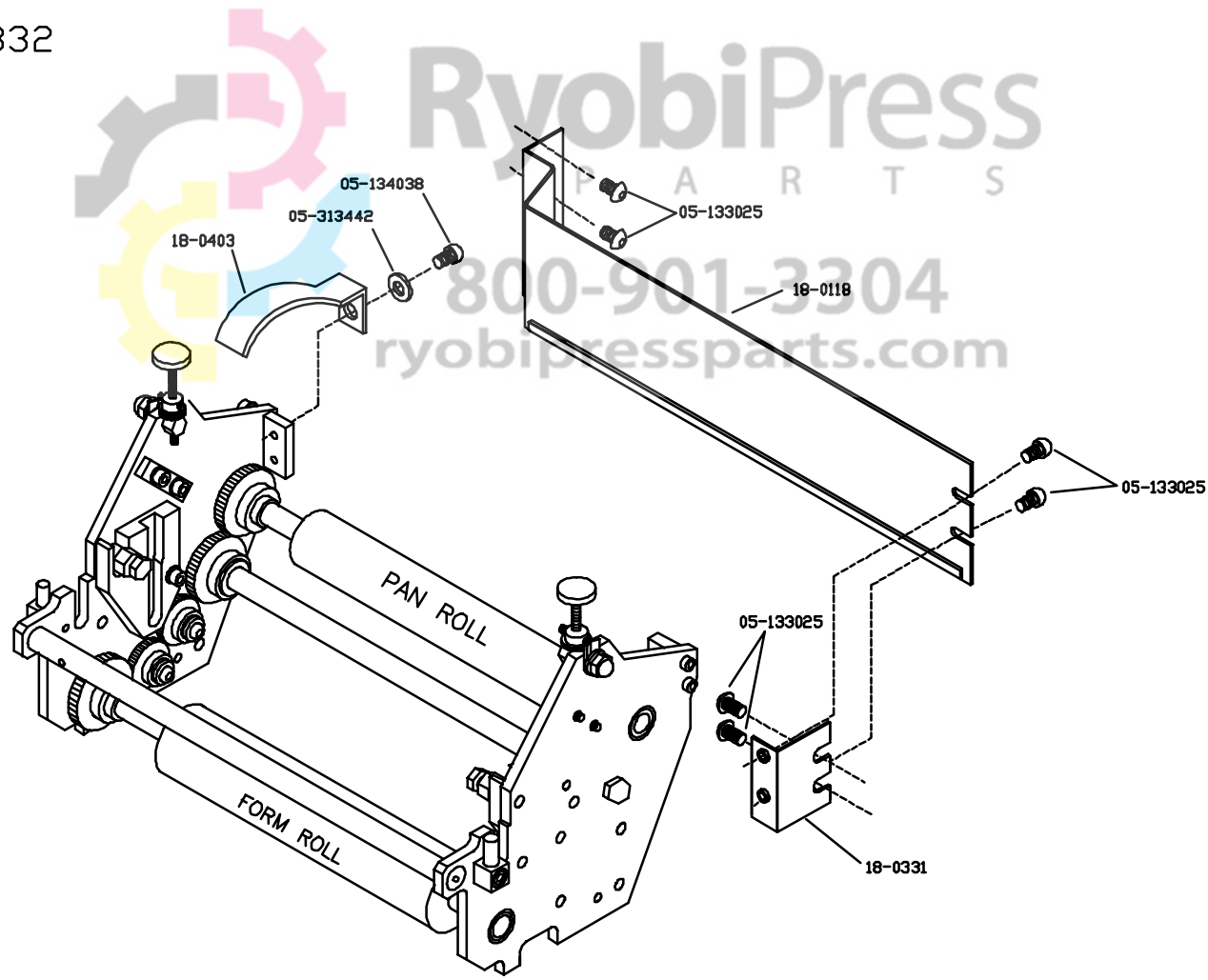
RyobiPress  
P A R T S

800-901-3304

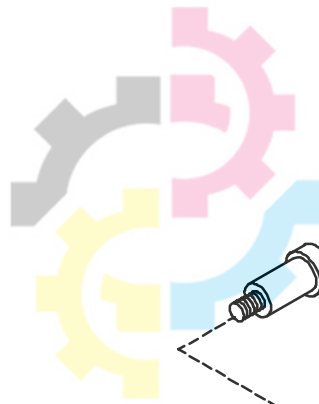
ryobipressparts.com

ILLU. 7-93

RY332



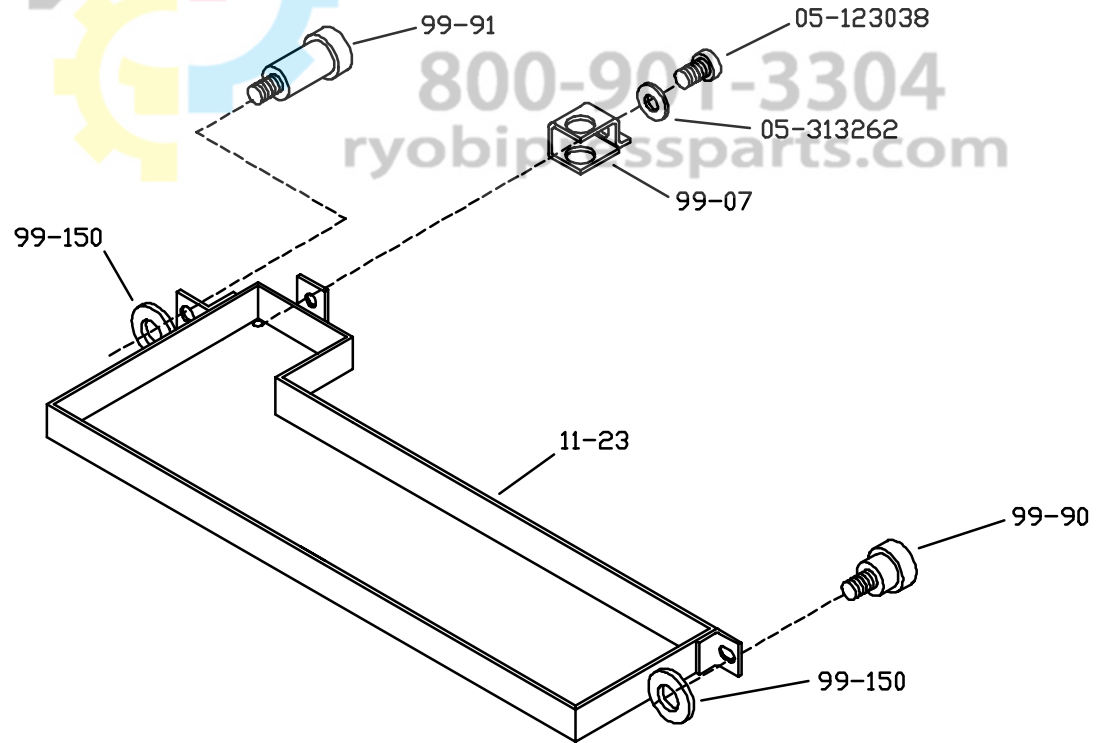
RY332



RyobiPress  
P A R T S

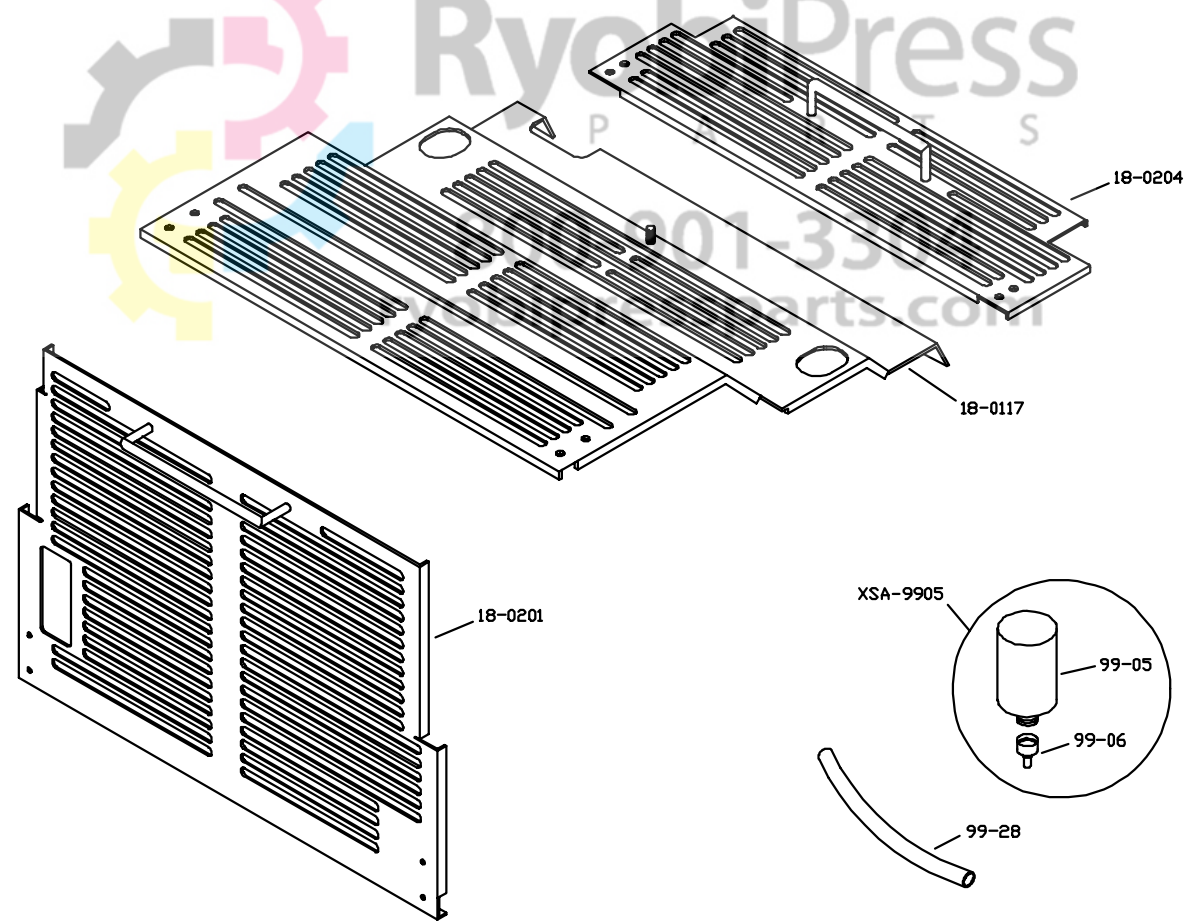
800-901-3304

ryobipressparts.com



BLOW7, 7-93

RYOBI 3302





**RyobiPress**  
P A R T S

800-901-3304  
ryobipressparts.com

**ACCEL** ®

*Graphic Systems*

11103 Indian Trail, Dallas, TX 75229 Phone 972-484-6808, Fax 800-365-6510  
E-mail [accel@dallas.net](mailto:accel@dallas.net), Web Site [www.accelgraphicsystems.com](http://www.accelgraphicsystems.com)