

Step by Step

Installation Guideline (FCM,VCM,VCS)

LOW PITCH ROOF – Klip Lock & Trim Deck

(Pre-Fabricated Flashing kit)

Disclaimer:

Please note that we cannot be held responsible for the finished product or the safety of the workplace during the installation process. While we strive to provide accurate information and guidance, the installation of a skylight or any other home improvement project can be dangerous and should only be attempted by experienced professionals. Any actions taken based on the information provided in this guide are at your own risk, and we are not liable for any damages or injuries that may occur as a result. We recommend that you consult with a licensed professional before attempting any installation work

Velux Flat roof skylight range.

The following instructions are a step-by-step guide when installing The Skylight Warehouse “Pre-Fabricated flashing system” on a low pitch roof profile such as Klip lock and Trim deck. Combined with the Velux Flat roof range (FCM, VCM, VCS).

Step 1, Determine the location:

Choose the best location for your skylight. Consider factors such as the amount of sunlight you want to let in, the angle of the sun, and the location of any obstacles such as trees or buildings.

TIP: FROM BELOW THE ROOF, TRANSFER A REFERENCE ONTO THE ROOF COVERING. THIS CAN BE DONE BY DRILLING A SMALL HOLE.



Shire Skylights & The Skylight warehouse

80 Woodfield Boulevard, Caringbah NSW 2229
t: (02) 9542 8287 | e: sales@shireskylights.com.au

Step 2, Measure and Mark the opening:

Position the Pre-fabricated base flashing in the correct location and mark the inside edge of your base flashing with a pencil or texter. This will be the cut line.

TIP: Try to make the cut as close to the line as possible. If you over cut your flashing has less cover over your roof sheet. If you under cut, the void will decrease in size.



Step 3, Cut the Opening:

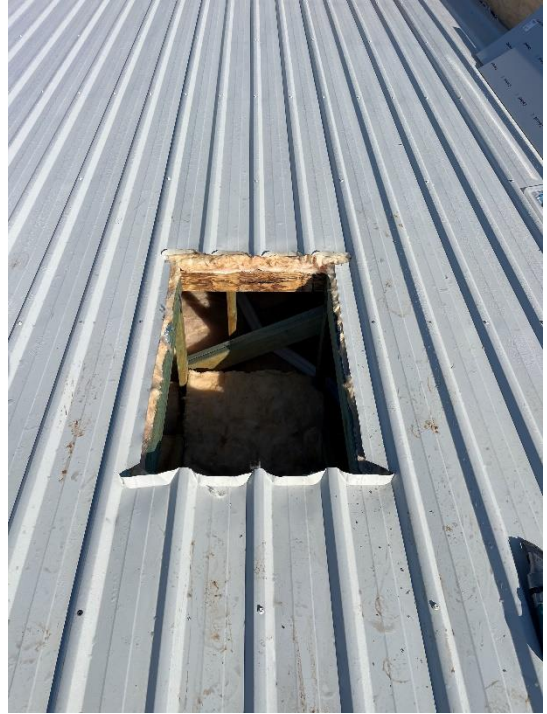
Use tin snips, nibbler, shears or reciprocating saw to cut the opening for the skylight. Follow the marked lines carefully and make sure the cut is straight and accurate.

TIP: Don't use a grinder, this will cause the colorbond to rust.

Step 4, Remove insulation and Stop end sheet.

With a sharp knife, cut the insulation or sarking.
Turn the pan of the roof sheet to 90 degrees,
at the front and rear of the opening.
Ensuring the sheet doesn't split in the corners.

TIP: Ensure

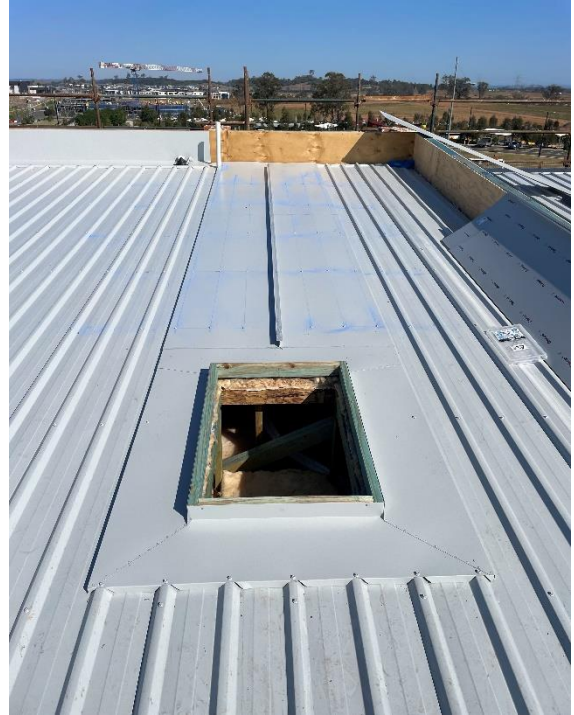


Step 5, Install the Pre- Fabricated flashing.

Sit your flashing back into the correct position.
Once in the correct position, mark and notch the rib profile
on the front flashing.
Secure the base flashing through the roof covering into the
roof batten.

STEP 6, Install the back tray flashing.

The back tray flashing is basically a metal flashing which covers a section of roof sheeting behind the skylight penetration. The back tray flashing eliminates this section of roof sheeting, when rain falls on the back tray, the water simply runs off into the sheet pan either side of the back tray flashing.



Step 7, Install the Skylight:

Sit the Velux Skylight over your base flashing and fasten through the predrilled holes in you're the skylight.

TIP: Use a 50mm roofing screw in colour Basalt.

STEP 8, Check over:

The Install should now be complete, check over your skylight and make sure all fixings and sealants have been applied. Remove and rubbish and drill shavings that may be left around your skylight.