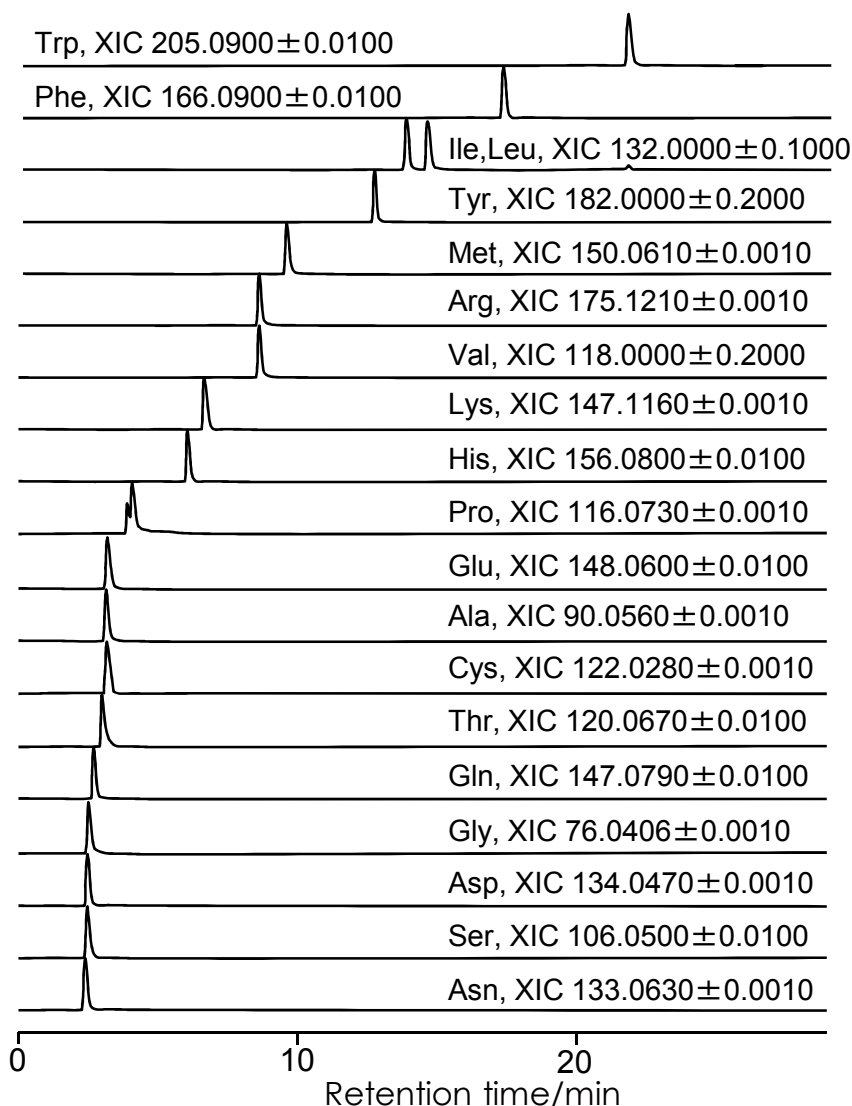


## アミノ酸の分離 (LC/MS)

### Amino acids LC/MS

SunShell RP-AQUA 2.6  $\mu$ m, 150 x 2.1 mm i.d.



Column:  
SunShell RP-AQUA 2.6  $\mu$ m,  
150 x 2.1 mm  
Mobile phase:  
A) 5 mM HFBA,  
B) 5 mM HFBA in CH<sub>3</sub>CN / H<sub>2</sub>O  
(9/1)  
%B 0% to 20% in 20 min  
Flow rate: 0.2 mL / min  
Temperature: 40 oC  
Detection: MS (NanoFrontier LD)  
ESI Positive, Extracted ion  
chromatogram (EIC)  
HPLC: LaChrom Ultra

HFBA: Heptafluorobutyric acid

データ提供: 横浜国立大学 金子竹男先生  
横浜国立大学機器分析評価センター

### Mass spectra of Ile and Leu

