



7940 siaair

Swiss Finish in Perfection

Available at www.SMSDistributors.com



Before painting



Final sanding of filler at hard to get at areas



Producing a mat finish on painted surfaces



For blending

1. Step

siaair

Grit: K600

Type of sanding: moist



1. Step

siaspeed

Grit: K1000

Type of sanding: moist



2. Step

siaair

Grit: K800

Type of sanding: moist



1. Step

siaspeed

Grit: P800

Type of sanding: dry



2. Step (Blend base coat)

siaair

Grit: K2000

Type of sanding: moist



3. Step (Blend clear coat)

siaair

Grit: K3000

Type of sanding: moist



4. Step

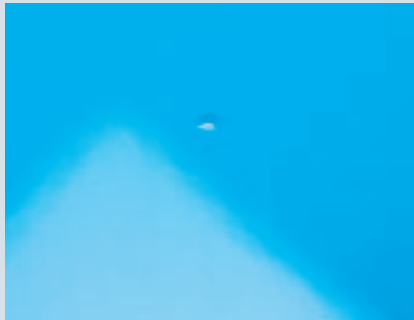
siashine polishing system



Perfect finish



After painting



Removing dust inclusions



Removing paint runs



Removing orange peel effect

1. Step

siawat

Grit: P2000 – 2500
Type of sanding: moist



2. Step

siaair

Grit: K3000
Type of sanding: moist



3. Step

siashine polishing system



Perfect finish



1. Step

siawat

Grit: P1200
Type of sanding: wet



2. Step

siaair

Grit: K2000
Type of sanding: moist



3. Step

siaair

Grit: K3000
Type of sanding: moist



4. Step

siashine polishing system



Perfect finish



1. Step

siaspeed

Grit: P1500
Type of sanding: dry



2. Step

siaair

Grit: K2000
Type of sanding: moist



3. Step

siaair

Grit: K3000
Type of sanding: moist



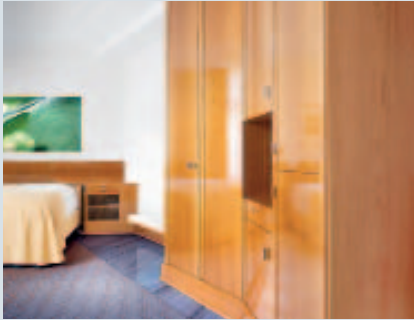
4. Step

siashine polishing system



Perfect finish





Varnish errors on high-gloss surfaces



Buffing up curved components



Polishing mineral materials

1. Step

siaspeed
Grit: P1000
Type of sanding: dry



2. Step

siaair
Grit: K1500
Type of sanding: moist



3. Step

siaair
Grit: K3000
Type of sanding: moist



4. Step

siashine polishing system



Perfect finish



1. Step = Fine sanding wood

siaair
Grit: K240
Type of sanding: dry



2. Step (Intermediate sanding)

siaair
Grit: K320 – 500
Type of sanding: moist



3. Step (Prep. for polishing)

siaair
Grit: K1500 – 3000
Type of sanding: moist



4. Step

siashine polishing system



Perfect finish



1. Step

siaspeed
Grit: P320
Type of sanding: dry



2. Step = surface matt

siaair
Grit: K320 – 500
Type of sanding: moist



3. Step = surface silky luster

siaair
Grit: K800 – 1500
Type of sanding: moist



4. Step (Prep. high-gloss surface)

siaair
Grit: K3000
Type of sanding: moist



5. Step

siashine polishing system



Perfect finish



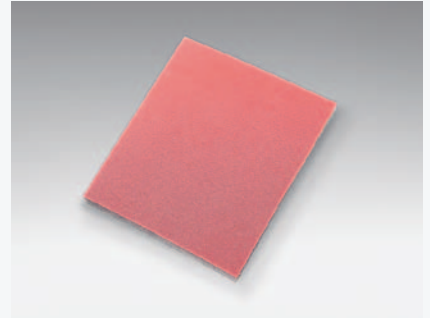
Range of products



7940 siaair
Disc ø 80 mm
 3647.2462.xxxx.01 (T3306)
 Grit range: K1000, K2000, K3000, K4000 with siafast



7940 siaair
Disc ø 150 mm
 5156.3687.xxxx.01 (T3307)
 Grit range: K240, K360, K500, K600, K800, K1000, K1500, K2000, K3000, K4000 with siafast



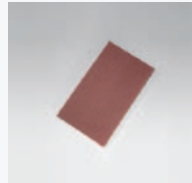
7940 siaair
Strip 115 x 140 mm
 6329.7598.xxxx.01 (T3308)
 Grit range: K600, K800, K1000, K1500, K2000 with siafast



1950 siaspeed
 ø 150 mm, 15-hole
 7546.2948.xxxx.01
 P40 – P600
 with siafast



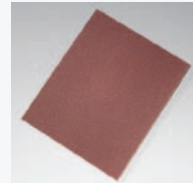
1950 siaspeed
 ø 150 mm, 15-hole
 7546.2948.xxxx.xx
 P800 – P1500
 with siafast



1913 siawat fc
 70 x 125 mm
 5980.9923.xxxx.xx
 P180 – P2500
 with siafast



1913 siawat fc
 140 x 230 mm
 9219.5517.xxxx.xx
 P1500 – P2500
 plain, without siafast



1913 siawat fc
 230 x 280 mm
 3100.3713.xxxx.xx
 P060 – P2500
 plain, without siafast



1913 siawat
 ø 35 mm
 4269.7970.xxxx.xx
 P1500, 2000, 2500
 with siafast



1913 siawat
 ø 35 mm
 9251.0230.xxxx.01
 P1500, 2000, 2500
 with SAF in dispenser box



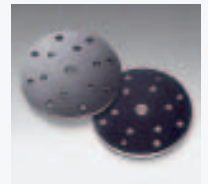
Finiblock
 ø 30 mm
 0020.3285.01
 hard/soft
 with mikrolett



Finiblock
 ø 30 mm
 0020.3286.01
 hard/soft
 for self adhesive discs



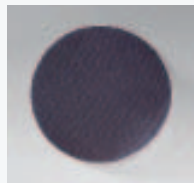
Intermediate
103-hole with J-Hook
 ø 150 mm
 0020.5886.01



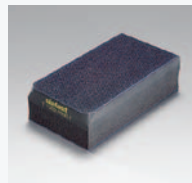
Intermediate Pad 15-hole with mikrolett
 ø 150 mm
 0020.4546.01



Back plate 103-hole
 ø 150 mm
 0020.574x.01
 hard/soft/extra soft
 with 5/16" and
 M8 thread/shaft



Protection disc
 ø 150 mm
 0020.3453.01



Hand sanding block
 for wet & dry sanding
 70 x 125 mm
 0020.0343.01
 2 sides hard/soft
 with mikrolett



Hand sanding block
 70 x 125 mm
 0020.0389.01
 with slit, without klett



Flexible hand sanding block
 60 x 128 x 16 mm
 0020.3713.01
 2 sides soft/extra soft



siashine fast cut
 1 liter
 0020.4898.01



siashine speed
 1 liter
 0020.3615.01



siashine finish
 1 liter
 0020.3616.01



siashine magic
 1 liter
 0020.3617.01



Micro fibre cloth
 380 x 380 mm
 0020.3185.01



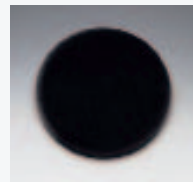
Lamb skin disc
 0020.0265.01 ø 170 mm
 0020.4897.01 ø 80 mm



Foam disc
 hard
 0020.2018.01 ø 170 mm
 0020.4896.01 ø 80 mm



Foam disc
 soft
 0020.0264.01 ø 170 mm
 0020.4895.01 ø 80 mm



Foam disc
 extra soft
 0020.0262.01 ø 170 mm
 0020.4894.01 ø 80 mm

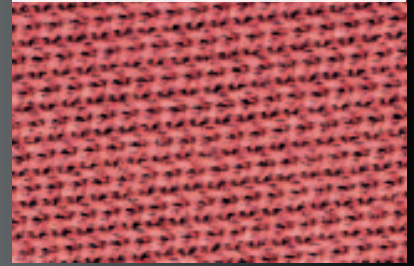
siaair Technology

So clever can an abrasive disc be. On the outside, the ingenious net-backed abrasive, in the middle the foam cushioning which equalizes the application pressure and on the inside the well proven siafast hook and loop fastening system. This makes you shine, and your work too.

- **very long lifetime**
- **low scratch depth**
- **equalizing application pressure**
- **waterproof and washable**
- **minimum clogging when sanding dry**
- **can be used many times**
- **absorbs water**
- **resistant to silicon remover**
- **air and water permeability**



1 Net backed abrasive



2 Foam cushioning



3 siafast fastening system



sia Abrasives Industries AG
8501 Frauenfeld
Switzerland

Art. ID: 0020.6073.01
00.000.082010
© by sia Abrasives Industries AG – All rights reserved

www.sia-abrasives.com



Available at www.SMSDistributors.com