

¡HOLA, OFICINA DE CORREO!

HELLO, POST OFFICE!

Printable activities to accompany your Mi Mundo Bilingüe box.



Continue having fun with your post office! This packet is full of activities and ideas that will spark your child's curiosity and imagination. Don't forget to share pictures with us! We love to see you learn and play together.

WHAT'S INSIDE?

Crafts

Coloring pages

Dramatic play labels & ideas

Academic activities

Interactive early reader

Learn & Play calendar and tracker

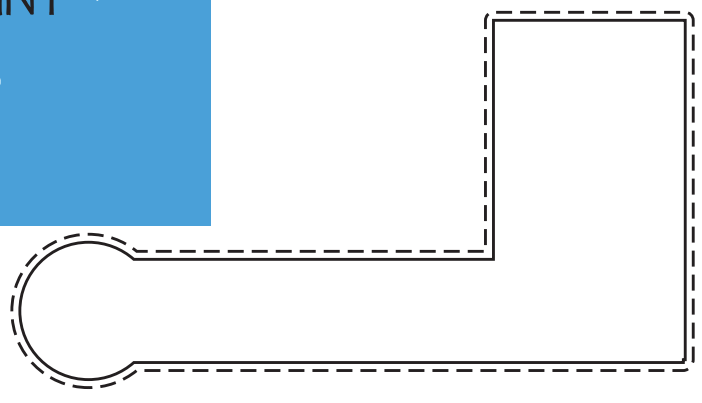
Learning certificates


Share your fun & learning with us! Tag us @holaamigobox

1 COLOREA O PINTA
 COLOR OR PAINT 


2 RECORTA
 CUT OUT 

3 PEGA
 GLUE 





HOLA AMIGO

EL BUZÓN DE



MAILBOX


HOLA AMIGO

Dobla el área gris hacia abajo y pega a otra hoja de papel para formar un túnel.

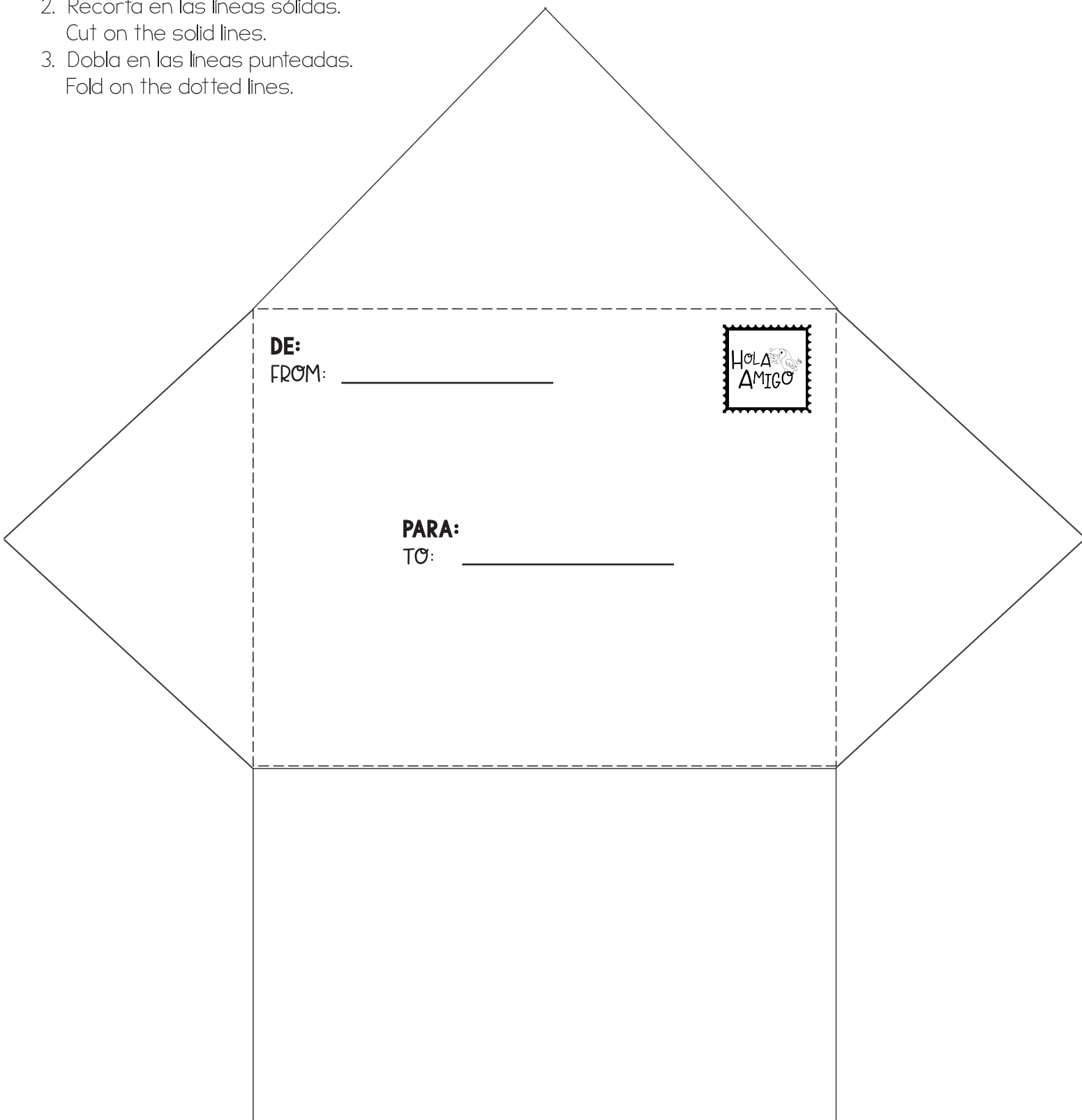
Fold the grey area under and glue to another piece of paper to form a tunnel.

Dobla el área gris hacia abajo y pega a otra hoja de papel para formar un túnel.



Print a letter

1. Escribe y decora. - Write and decorate.
2. Recorta en las líneas sólidas.
Cut on the solid lines.
3. Dobla en las líneas punteadas.
Fold on the dotted lines.



**El cartero
entrega mi correo.**



**The mail carrier
delivers my mail.**

**HOLA
AMIGO** 

**El cartero conduce
un camión postal.**



**The mail carrier drives a
mail truck.**

En mi mundo bilingüe hay una oficina de correo.

HOLA
AMIGO 



In my bilingual world there's a post office.

Dramatic Play Labels

Dramatic play is the perfect way to use your creativity, imagination, and practice vocabulary.

1. Recorta - Cut on the dotted lines.
2. Imagina y Juega - Imagine and play.
3. Use items in your home to make your imaginary post office.
Visit our Pinterest board for dramatic play ideas.



LA OFICINA DE CORREO
POST OFFICE



el cartero
mail carrier



LA OFICINA DE CORREO
POST OFFICE



la cartera
mail carrier



LA OFICINA DE CORREO
POST OFFICE



**el
trabajador
postal**

post office worker



LA OFICINA DE CORREO
POST OFFICE



**la
trabajadora
postal**

post office worker



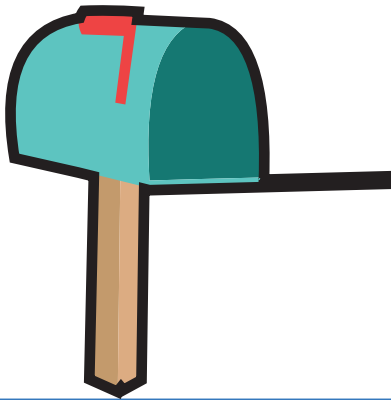
los sobres
envelopes



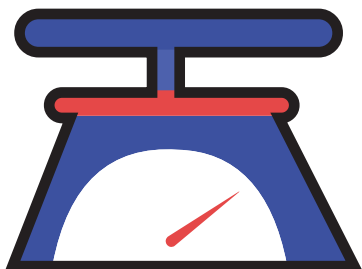
las tarjetas
cards



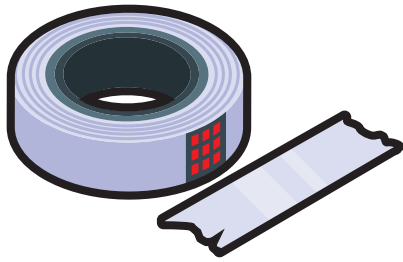
las cajas
boxes



el buzón
mailbox



la escala
scale



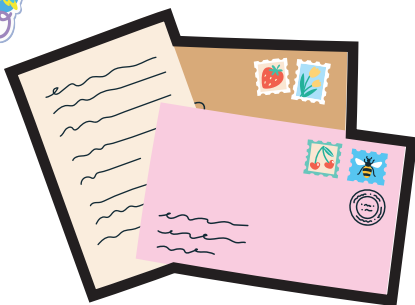
la cinta
tape



las postales
postcards



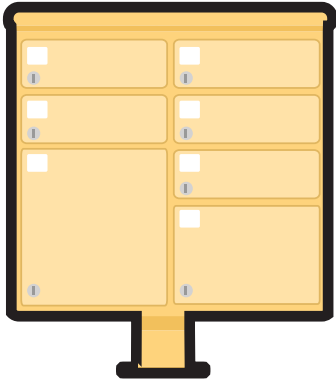
las estampillas
stamps



las cartas
letters



**la bolsa
de correo**
mail bag



los buzones
mailboxes



**el cesto
de correo**
mail cart



**el camión
de correo**
mail truck



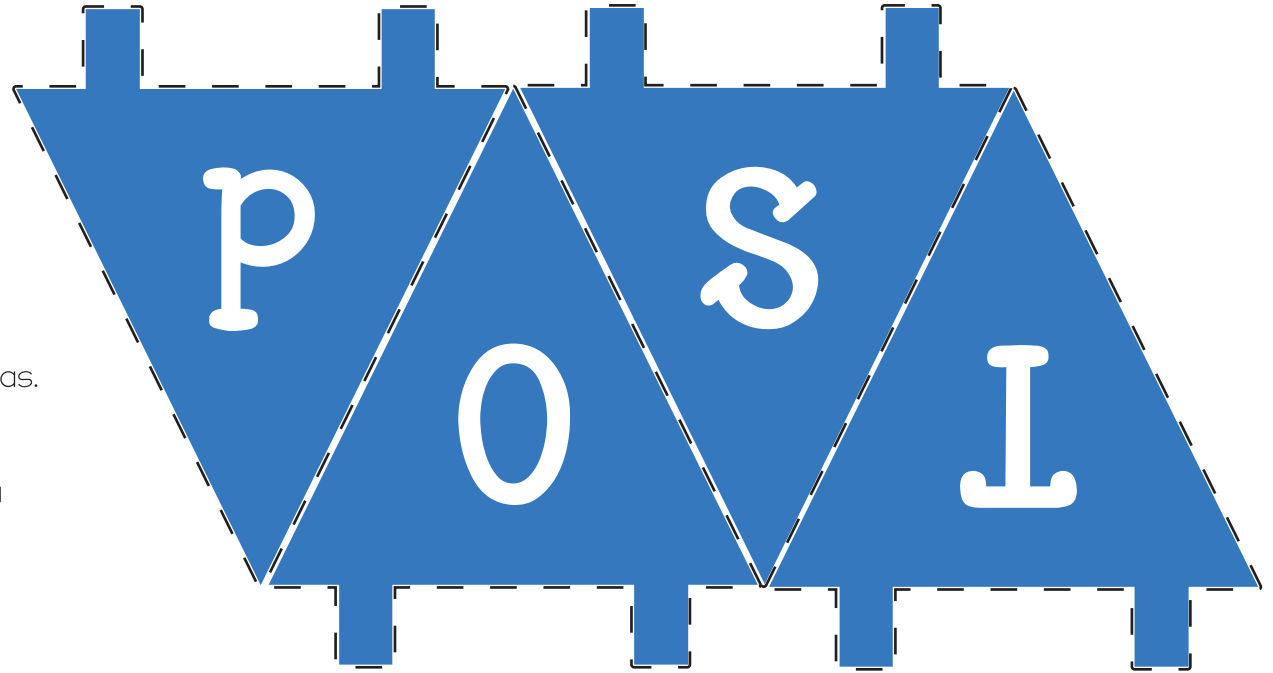


GARLAND

Cut: Cut on the black dashed line.

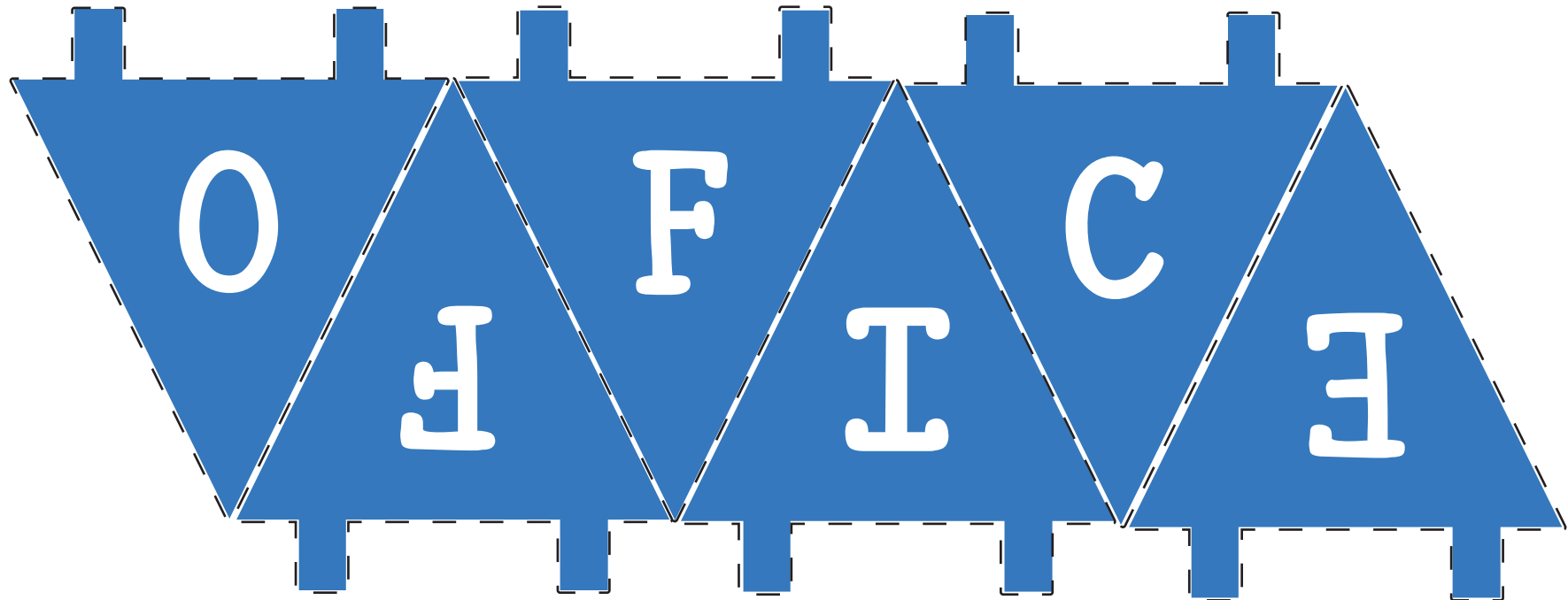
Fold: Fold the blue rectangles.

3. String: String the garland by placing a shoelace, ribbon, or string in between the folded flap & the letter. Glue to keep it in place.



GUIRNALDA

1. Corta: Corta por las líneas discontinuas negras.
2. Dobla: Dobla los rectángulos azules.
3. Encuerda: Encuerda la guirnalda colocando un cordón de zapato, una cinta o una cuerda entre la solapa doblada y la letra. Pega para mantenerlo en su lugar.

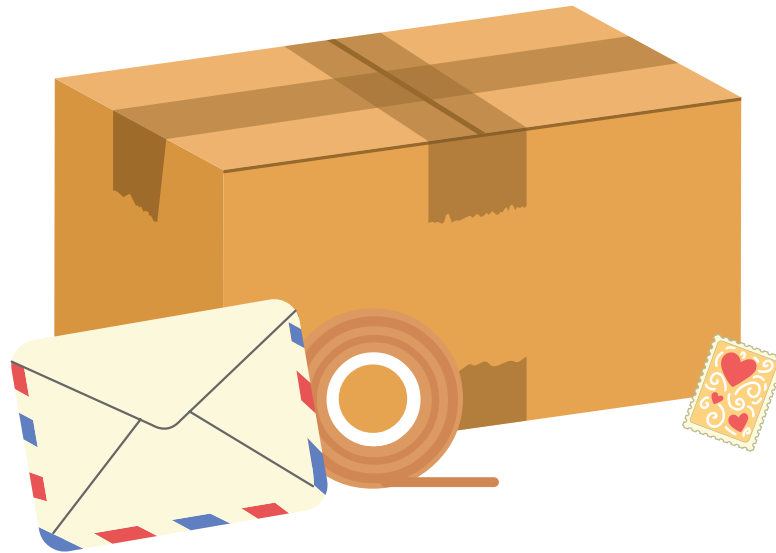


La oficina de correo



HOLA
AMIGO

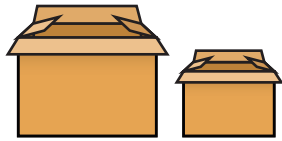
los suministros para envíos



shipping supplies

Cómo enviar un paquete por correo:

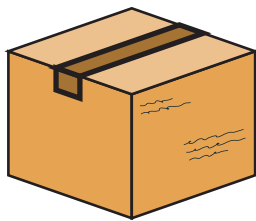
How to mail a package:



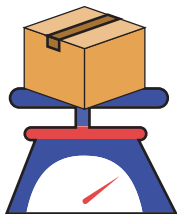
Elige una caja.
Choose a box.



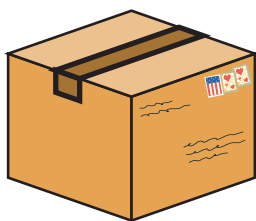
Pon tus artículos en la caja.
Put your items in the box.



Escribe las direcciones y cierra la caja con cinta.
Write the addresses and close the box with tape.



Pesa la caja en la escala.
Weigh the box on the scale.



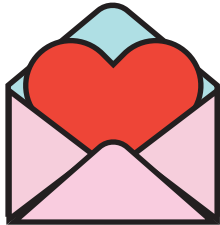
Pon el franqueo en la caja.
Put the postage on the box.

Cómo enviar una carta o tarjeta:

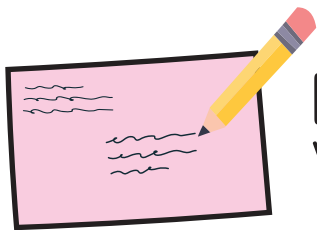
How to mail letter or card:



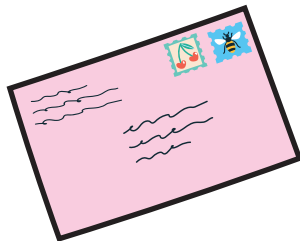
Escribe o dibuja tu mensaje.
Write or draw your message.



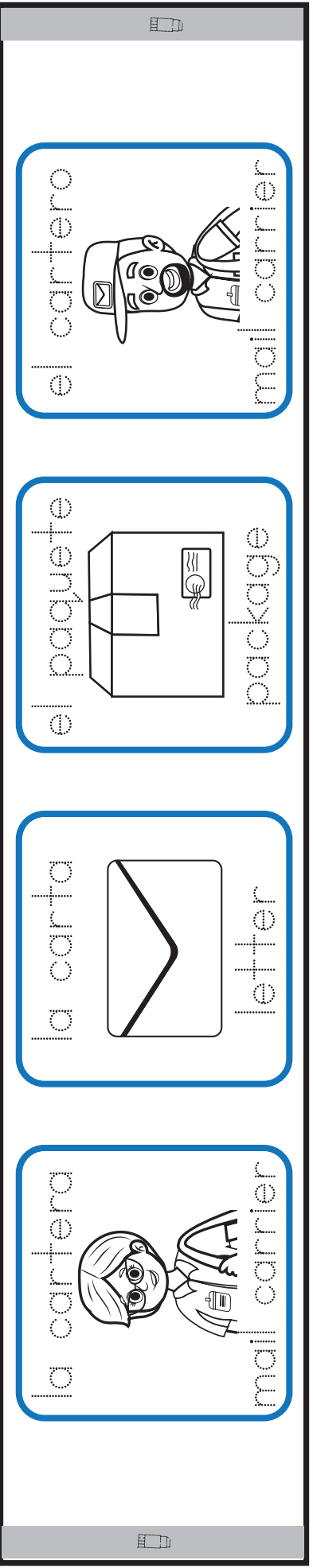
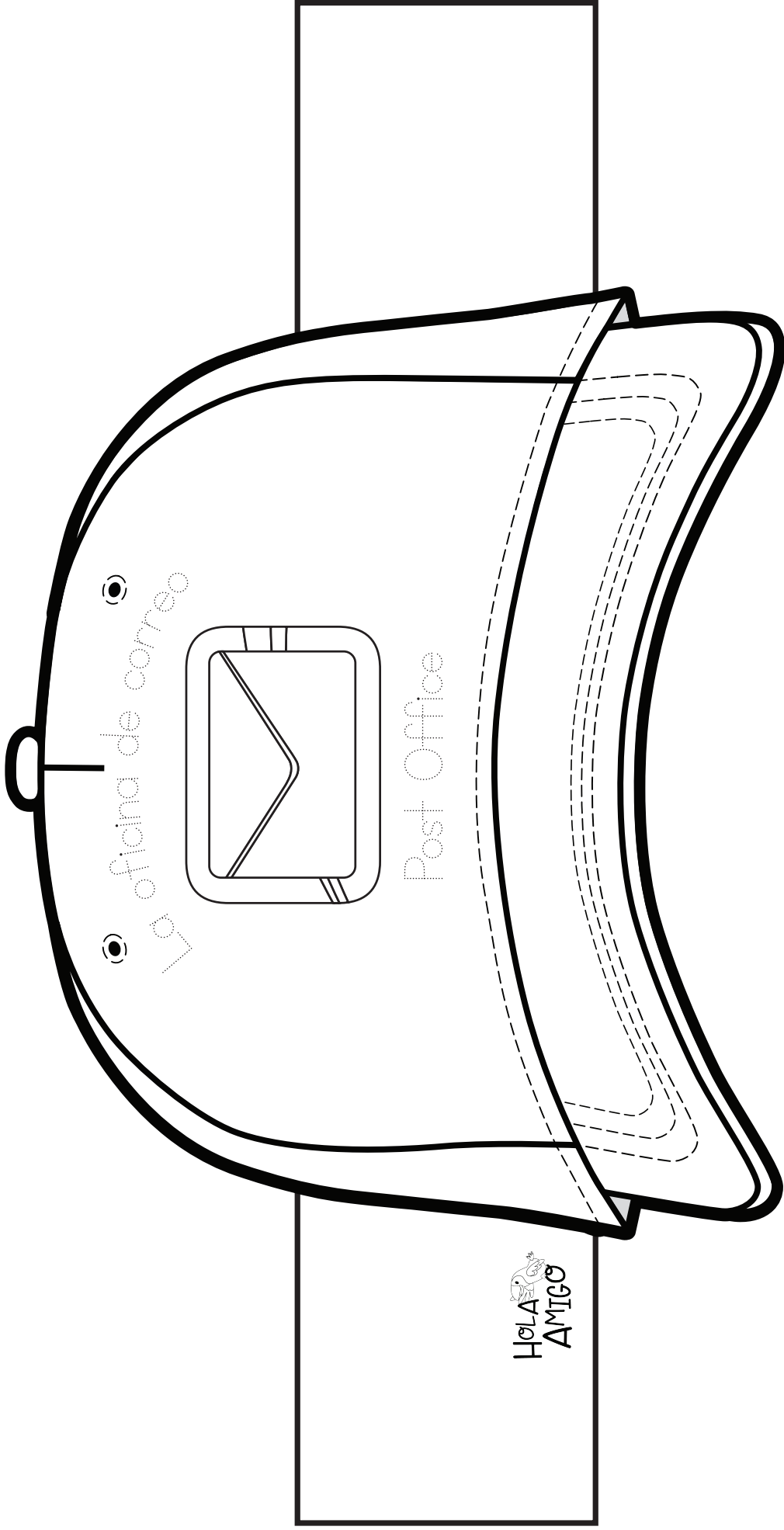
Ponla en un sobre.
Put it in an envelope.



Escribe las direcciones.
Write the addresses.



Pon el franqueo en el sobre.
Put the postage on the envelope.

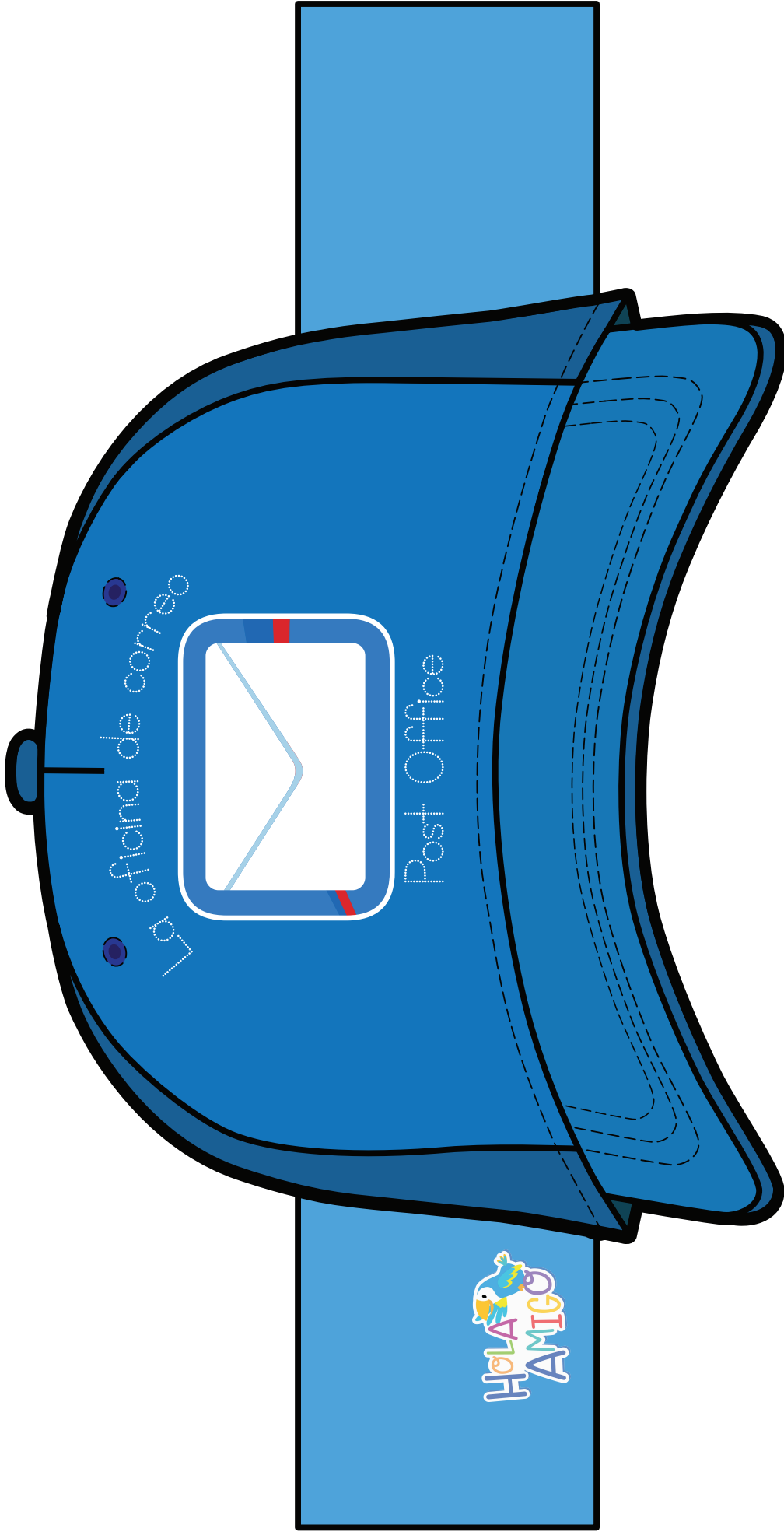


el cartero
mail carrier

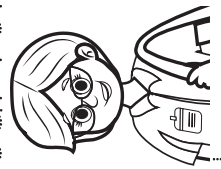
el paquete
package

la carta
letter

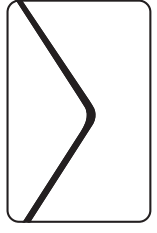
la cartera
mail carrier



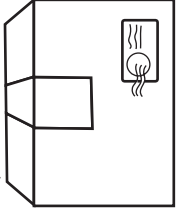
la cartera
mail carrier



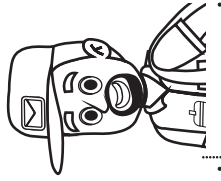
la carta
letter



el paquete
package



el cartero
mail carrier



LA OFICINA DE CORREO

POST OFFICE

EL RECIBO

RECEIPT



nombre
name

¿Qué vas a enviar hoy?

(Escribe cuántas de cada una en cada cuadrado.)

What are you mailing today?

(Write how many of each in the box.)

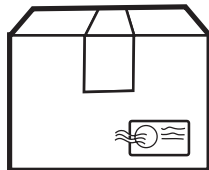
cartas

letters



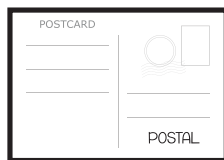
paquetes

packages



postales

post cards



tarjetas

cards



Suma los números en los cuadrados.
Add up the numbers in the squares.

artículos enviados

items shipped

¿Necesitas comprar suministros de envío?

Do you need to buy shipping supplies?



la estampilla

stamp



la cinta

tape



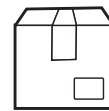
el sobre

envelope



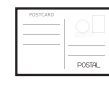
la caja pequeña

small box



la caja grande

big box



la postal

post card



Tu total es ___ dólares.

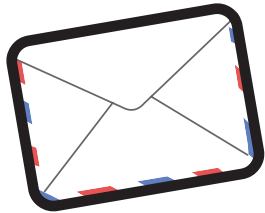
Your total is ___ dollars.

¡GRACIAS!



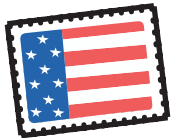
PRECIOS DE LOS SUMINISTROS

SUPPLY PRICES



el sobre
envelope

\$1



la estampilla
stamp

\$1



la caja pequeña
small box

\$3



la caja grande
large box

\$5

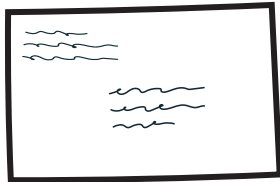


la cinta
tape

\$2

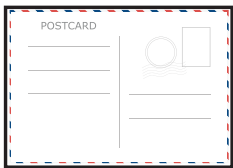
PRECIOS DE ENVÍO

SHIPPING PRICES



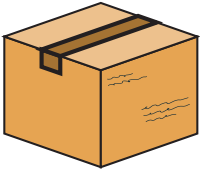
la carta
letter

\$1



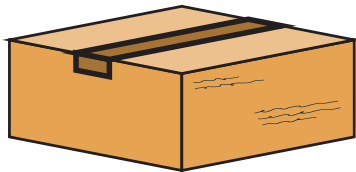
la postal
post card

\$1



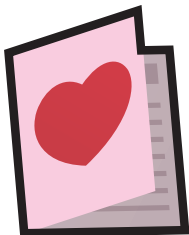
el paquete pequeño
small package

\$3



el paquete grande
large package

\$5

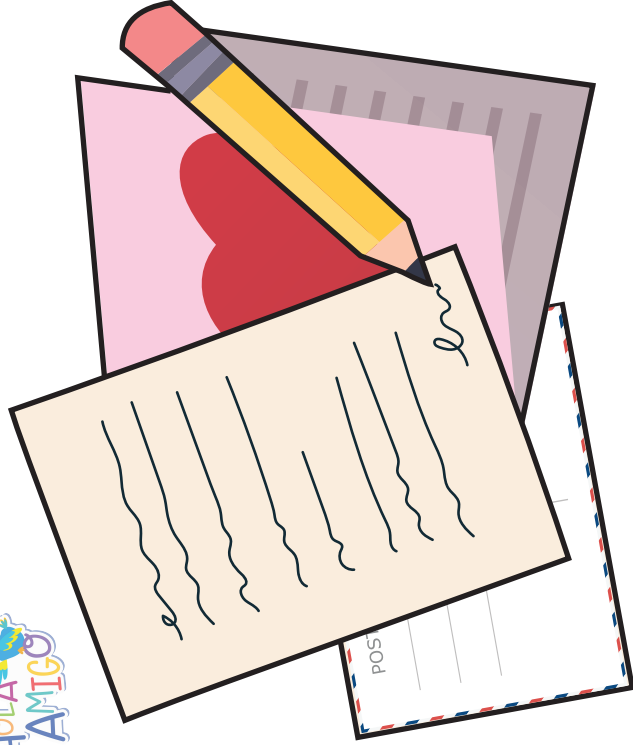


la tarjeta
card

\$2

ESCRIBE

Escribe tus postales,
cartas, y tarjetas aquí.



WRITE

Write your postcards,
letters, and cards here.

PAGA

paga aquí.

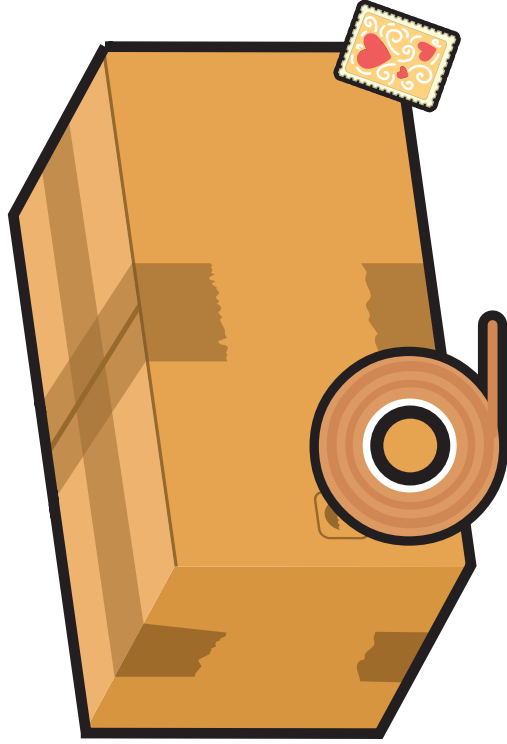


PAY

pay here.

EMPACA

Empaca los paquetes aquí.



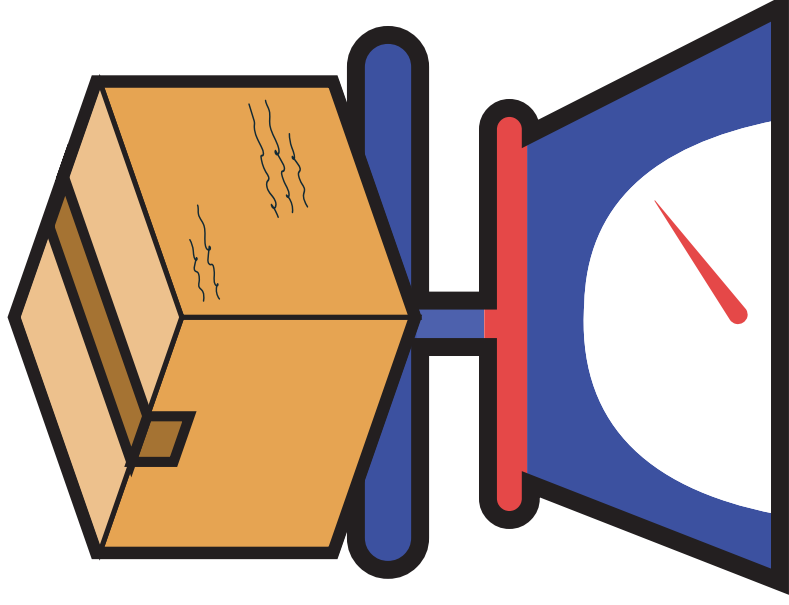
HO LA AMIGO
PACK

pack packages here.



PESA

Pesa los paquetes aquí.

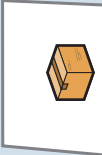
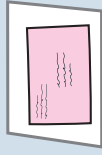
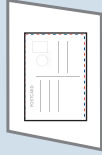


WEIGH

Weigh packages here.

HOLA AMIGO

\$0.00



8

7

9



4

5

6



1

2

3



0

.

00



LA CAJA REGISTRADORA

cash register



¡Hola, _____!

Tu amiga,

Hello, _____

Your friend,

LA POSTAL

POSTCARD



© 2024 Hola Amigo, LLC

LA POSTAL

POSTCARD



© 2024 Hola Amigo, LLC

Esta tarjeta fue hecha por

made this card.

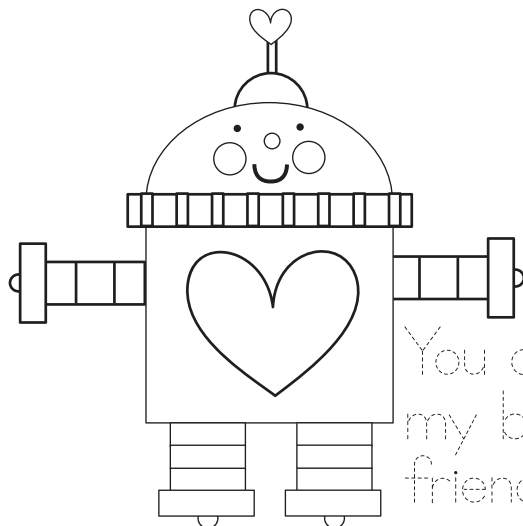


dobla - fold

(el reverso de la tarjeta - back of card)



¡Eres mi mejor
amigo!



You are
my best
friend!



(el frente de la tarjeta - front of card)

Esta tarjeta fue hecha por

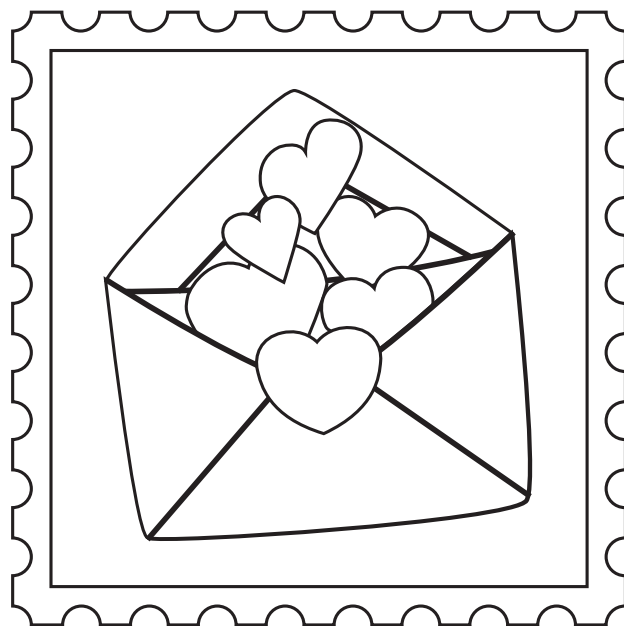
made this card.



dobla - fold

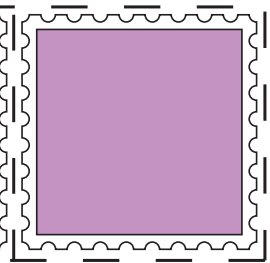
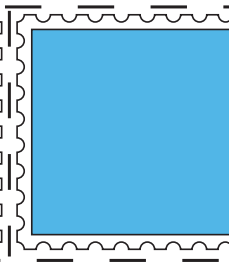
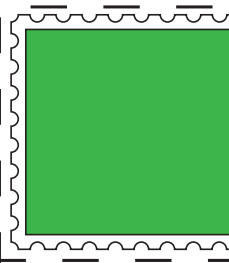
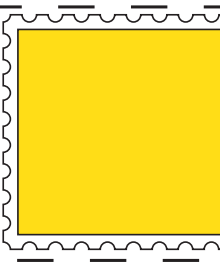
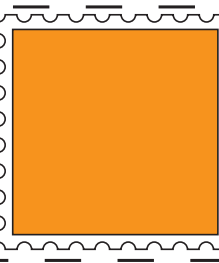
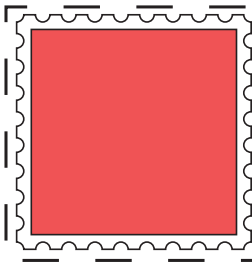
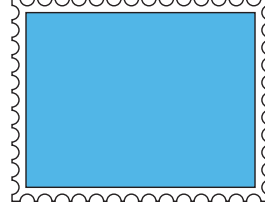
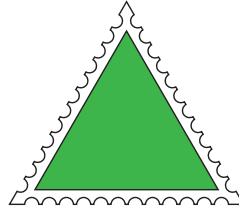
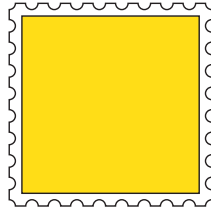
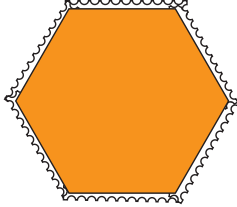
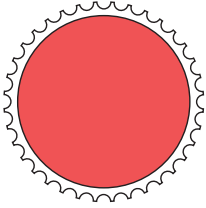
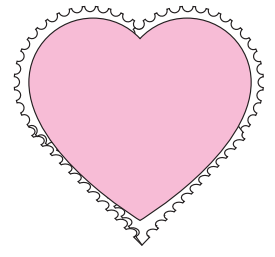
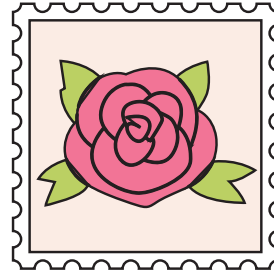
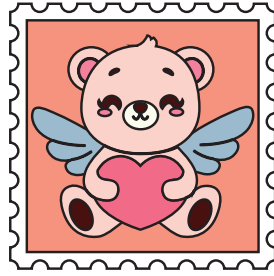
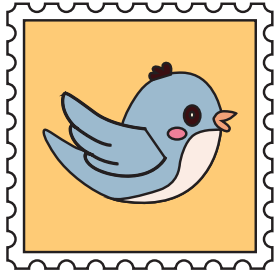
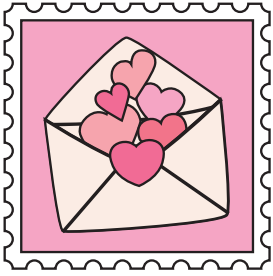
(el reverso de la tarjeta - back of card)

¡Feliz día de San Valentín!

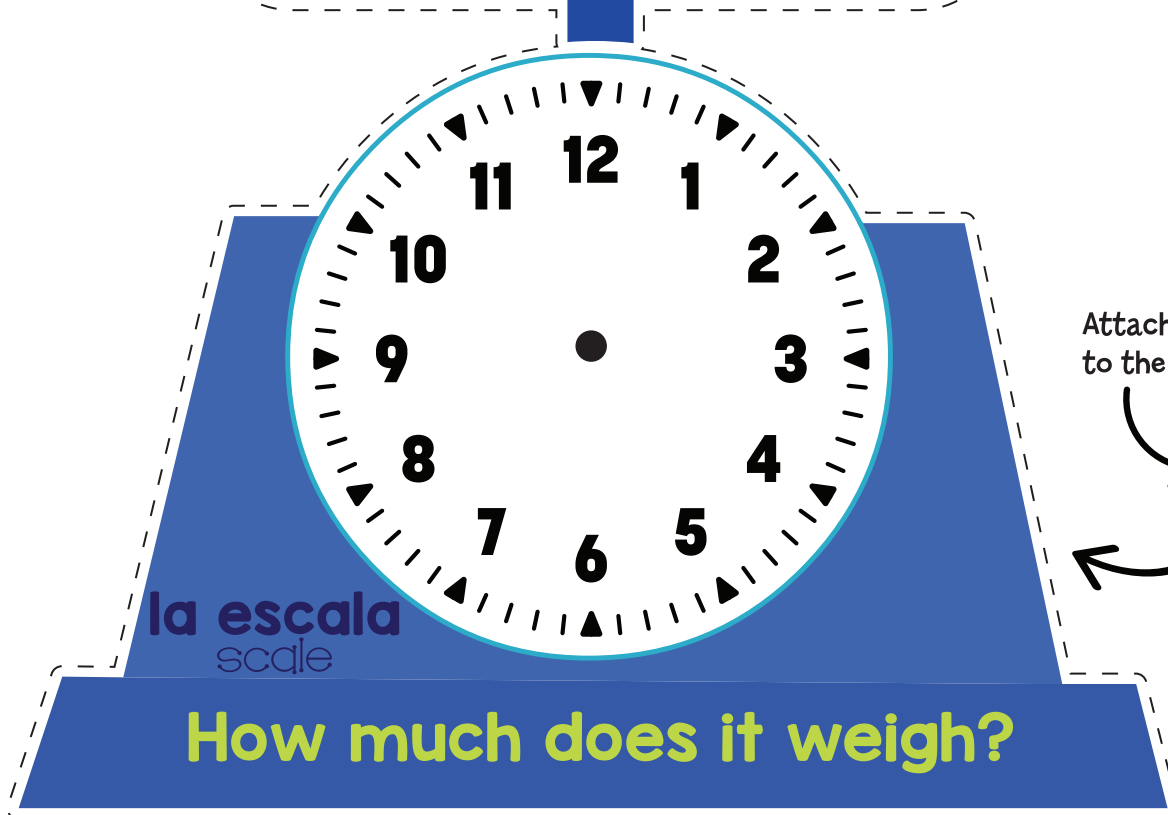


Happy Valentine's Day!

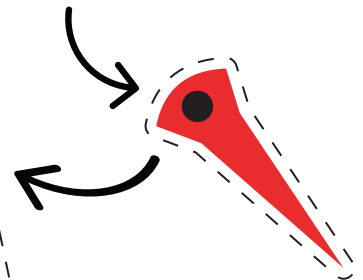
(el frente de la tarjeta - front of card)



¿Cuánto pesa?

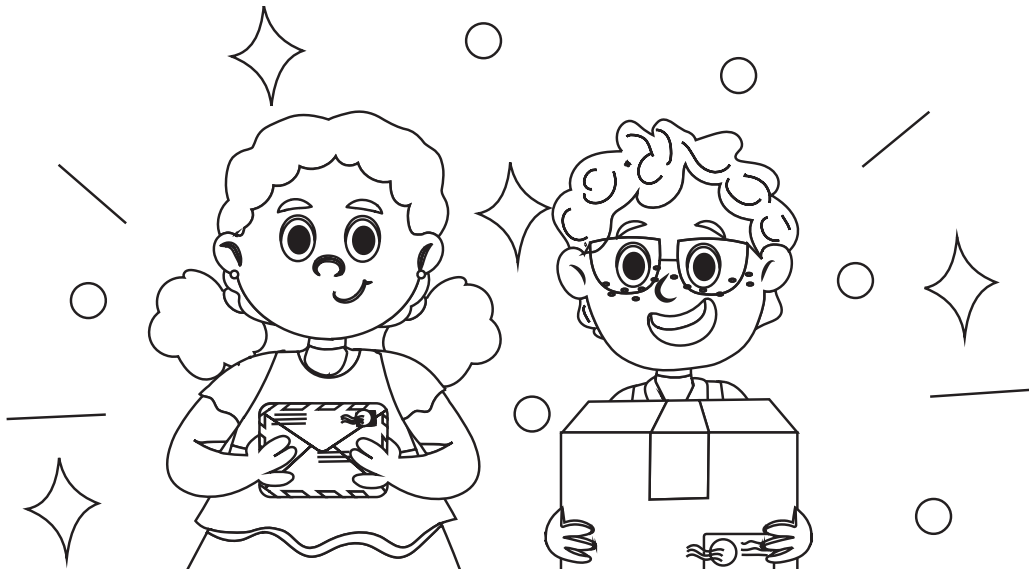


Attach the spinner to the scale with a brad.



Puedo enviar correo

I Can Send Mail



HOLA AMIGO 

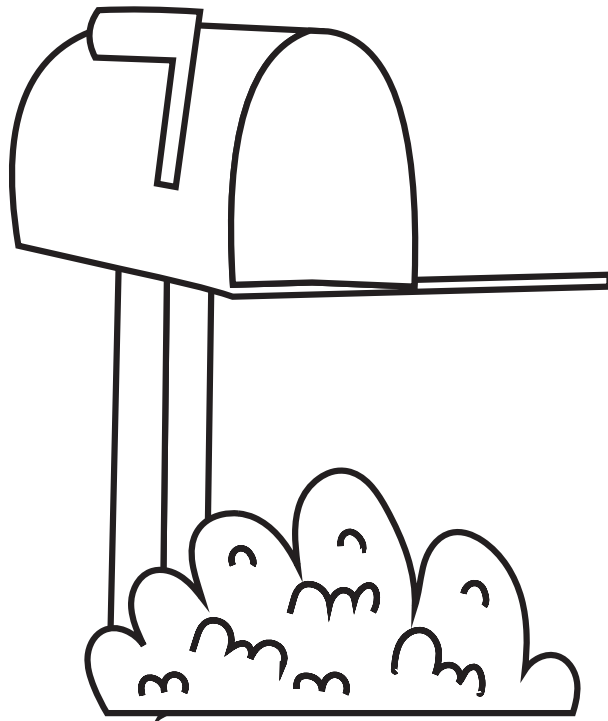
Este libro pertenece a

This book belongs to



Quiero enviar algo a mis amigos.

I want to send something to my friends **2**



¿Qué puedo enviar por correo? ③

What can I send through the post office?



Puedo preguntarle a mi cartero.

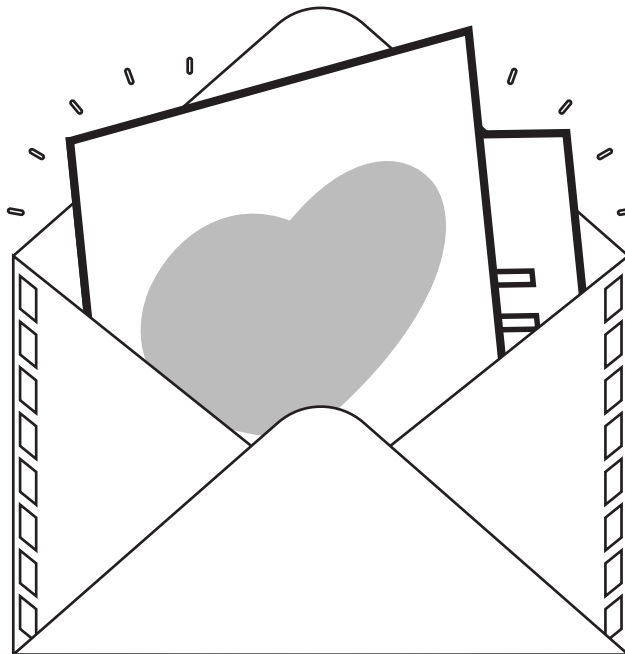
I can ask my mail carrier.



Puedo enviar una carta por correo.

I can mail a letter.

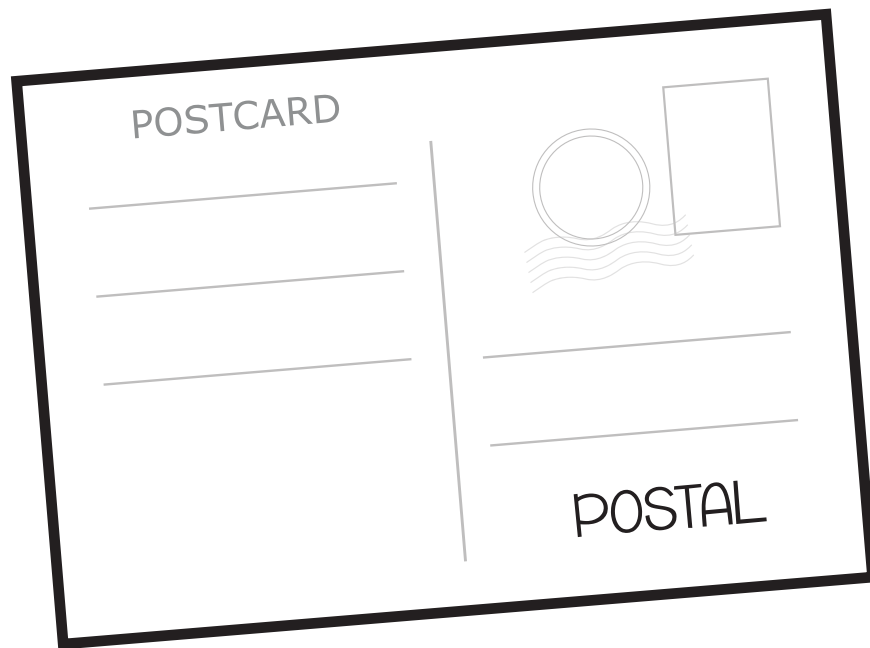
5



Puedo enviar una tarjeta por correo.

I can mail a card.

6



Puedo enviar una postal por correo.
I can mail a postcard.

7



Puedo enviar un regalo por correo.
I can mail a gift.

8

ESCRIBE - WRITE

Usa estas oraciones para escribir en tus tarjetas, postales y cartas.

Use these sentences to write in your cards, postcards, and letters.

Para:

To:



De:

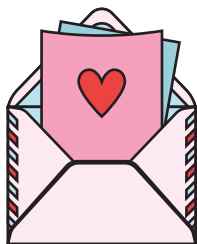
From:



Feliz cumpleaños
Happy Birthday



¡Te amo!
I love you!



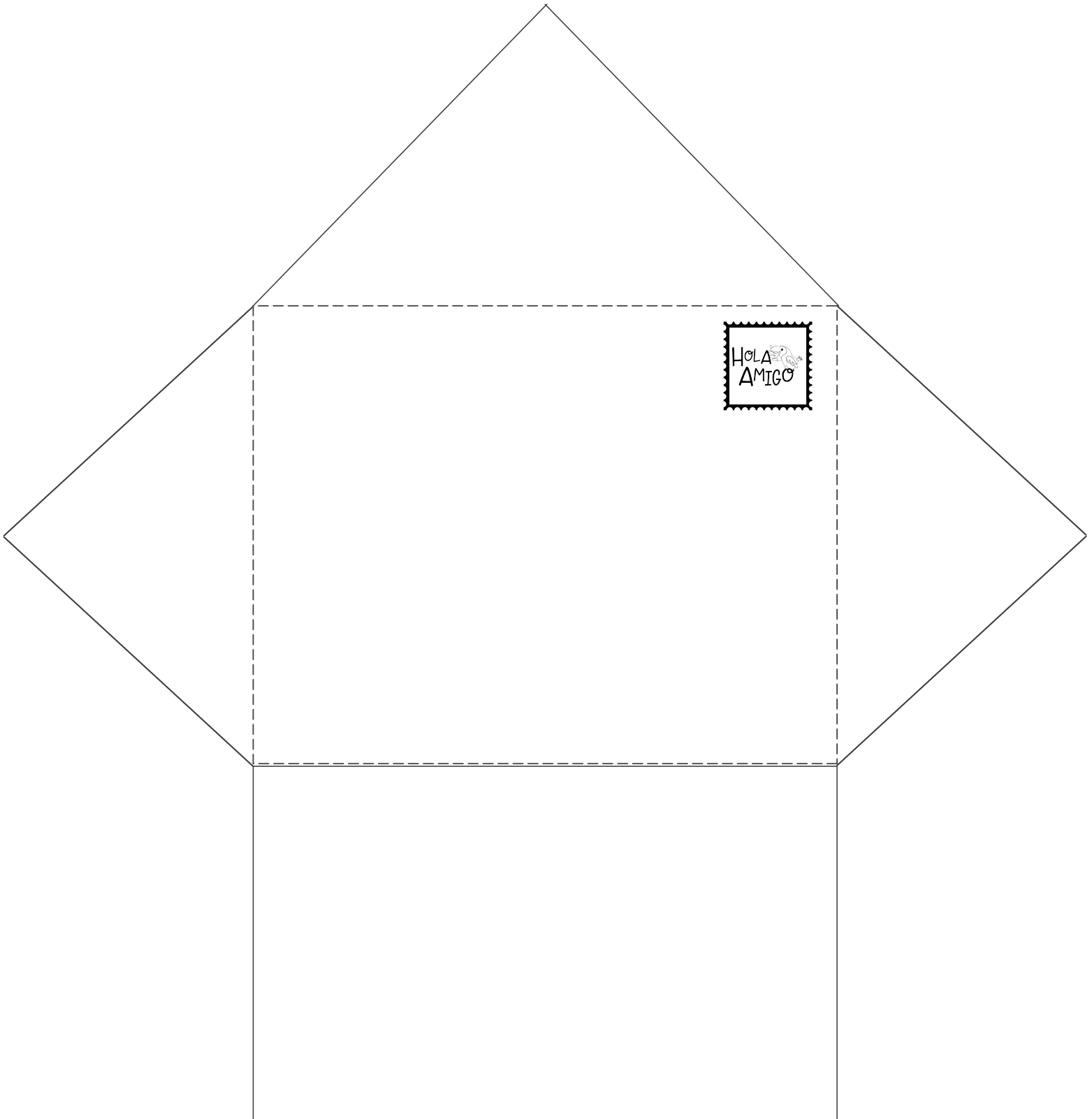
Feliz día de San Valentín.
Happy Valentine's Day.



¡Hola, Amigo!
Hi, Friend!

Shape matching activity: Divide the chipboard play pieces into 10 envelopes. Draw one shape on each envelope.

1. Dibuja - Draw:
Dibuja una forma en el frente de cada sobre.
Draw a shape on the front of each envelope.
2. Clasifica - Sort:
Clasifica las piezas de juego en el sobre por forma.
Sort the play pieces into the envelope by shape.
3. Recorta - Cut out:
Recorta formas que encuentres en el correo (en revistas o anuncios publicitarios) y ponlas en los sobres.
Cut out shapes you find in the mail (in magazines or mailers) and put them in the envelopes.





HOLA

EN MI MUNDO BILINGÜE

¡puedo ser un cartero!

mi nombre

my name

IN MY BILINGUAL WORLD

I can be a mail carrier!





EN MI MUNDO BILINGÜE

¡puedo ser una carterera!

mi nombre

my name

IN MY BILINGUAL WORLD

I can be a mail carrier!

HOLA
AMIGO



¡HOLA, OFICINA DE CORREO!

Hello, post office!

Scan the QR Code to find our Resource Page which includes activity videos and links to our Pinterest and YT Playlist!

DAILY
Complete 2-3 activity book pages

MONDAY
Village play prompt:
Welcome to the post office!
Explore each area.

TUESDAY
Village play prompt:
Let's make cards to mail to our friends and family!

WEDNESDAY
Village play prompt:
It's time to go to work!
Today you'll be a mail carrier.

THURSDAY
Village play prompt:
It's time to go to work!
Today you will be a post office worker.


FRIDAY
Village play prompt:
Use previous boxes or your toys to create a village for your post office.

SAT/SUN
Play the board game together!

Week 1
unbox

build vocabulary

- Your box has arrived! Unbox it together and have fun exploring each item in your box.
- Read the illustrated book and reader at bedtime, quiet time, or snack time.
- Find fun ways to use the vocabulary in the book.



Week 2
play

gross motor games

Visit the YouTube playlist for songs.

- Sing and dance to the songs about mail and shapes in our YouTube playlist.
- Play music while delivering mail to different rooms/areas in your home or classroom. Finish before the music stops.
- Jump, take large steps, and small steps while delivering mail.

Week 3
explore

sensory activities

Visit the Pinterest board for details.

- Make a sensory bin with shredded paper, envelopes, and the play pieces in your box.
- Put sugar or salt in a dish or tray to make a writing tray. Use the shape cards to help you draw shapes.
- Draw a large shape on old mail or scrap paper. Tear the paper to make the shape.

Week 4
create

dramatic play

- Set up your own post office! Create a play area with the items in your box, printable pack, and your imagination.
- Craft the items you need to set up a post office.
- Make mail boxes and mail bags.



Tag us in your Learning @holaamigobox and enter to win our Subscriber Sunday Giveaway!

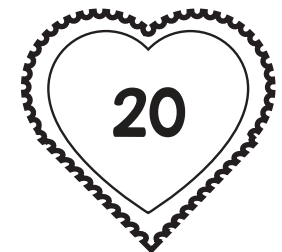
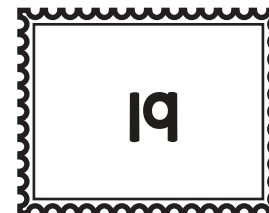
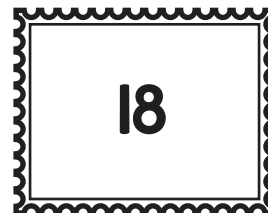
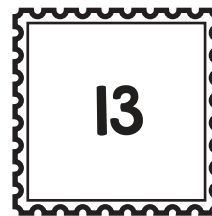
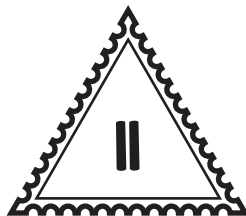
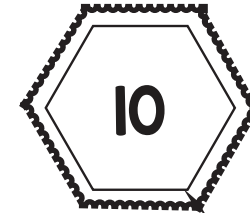
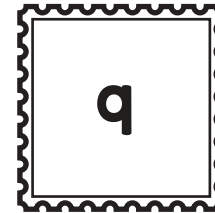
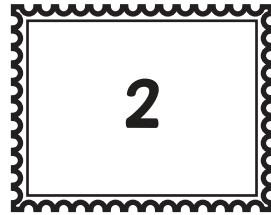
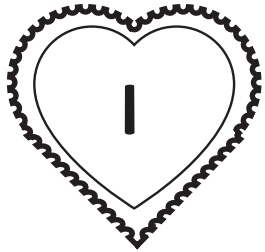


MI MUNDO BILINGÜE

La oficina de correo - Post Office

Colorea una estampilla cada día
que aprendas y juegues con tu caja.

Color one stamp each day
you learn and play with your box.





THANK YOU FOR RESPECTING OUR HARD WORK.
We hope you enjoy your activities!
Allison & Conchita

** This product is intended for personal use only. **

No part of this document may be distributed, posted on the internet, copied, edited, resold, or posted to any type of shared drive.

ALL contents of this document are under **copyright protection** including all text, graphics, content, and fonts.

info@holaamigobox.com
3000 SHELBY ST SUITE 5 INDIANAPOLIS, IN 46227

HolaAmigoBox.com

