

# E36 Coupe Rollbar Installation Instructions

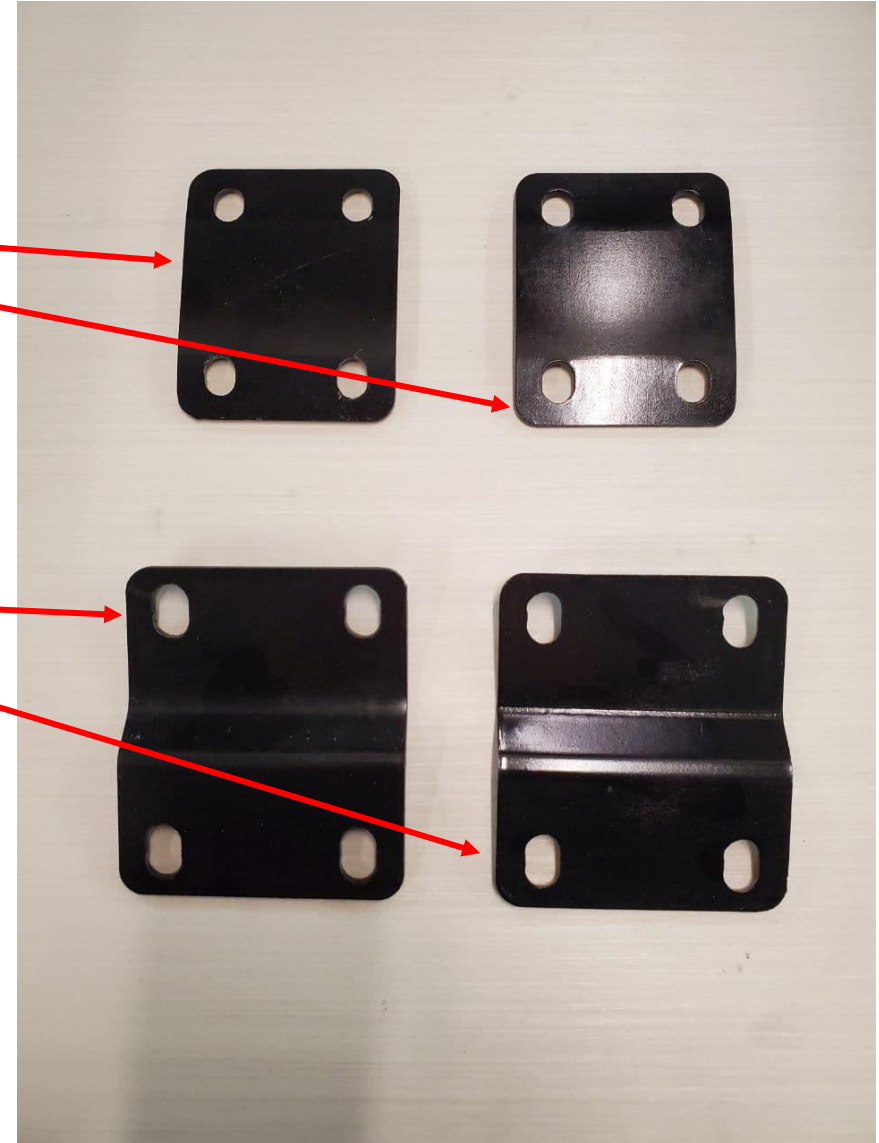
Please contact KinematicSpeed with any questions during installation  
and we'll do our best to assist.

[support@kinematicspeed.com](mailto:support@kinematicspeed.com)

# Kit Contents (1): Backing Plates

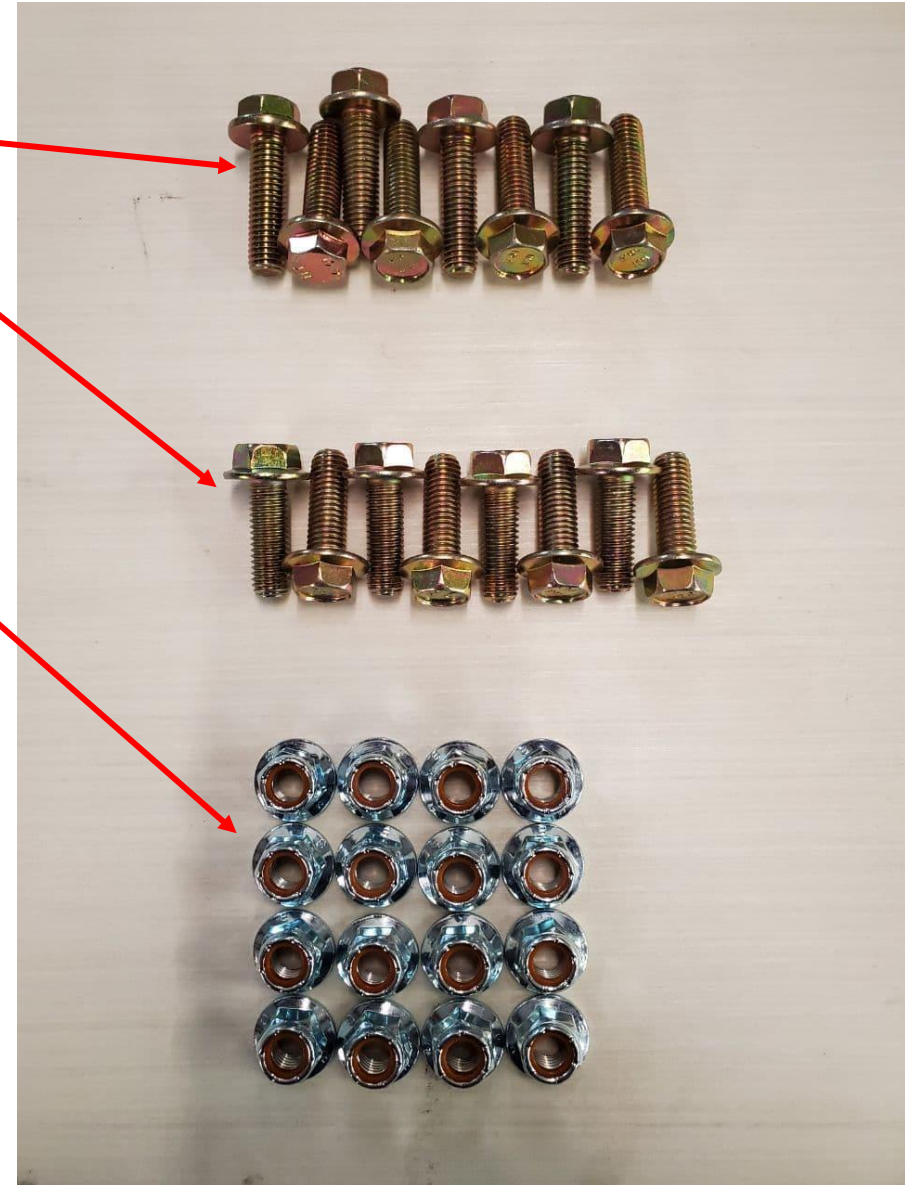
Rear down bar backing plates  
(Driver side and passenger side identical)

Main hoop backing plates  
(Driver side and passenger side identical)



## Kit Contents (2): Hardware

- M10x35mm Hex Head Flange Bolts – 8pcs
- M10x30mm Hex Head Flange Bolts – 8pcs
- M10 Nylock Flange Nuts – 16pcs



# Step 1: Remove front seats

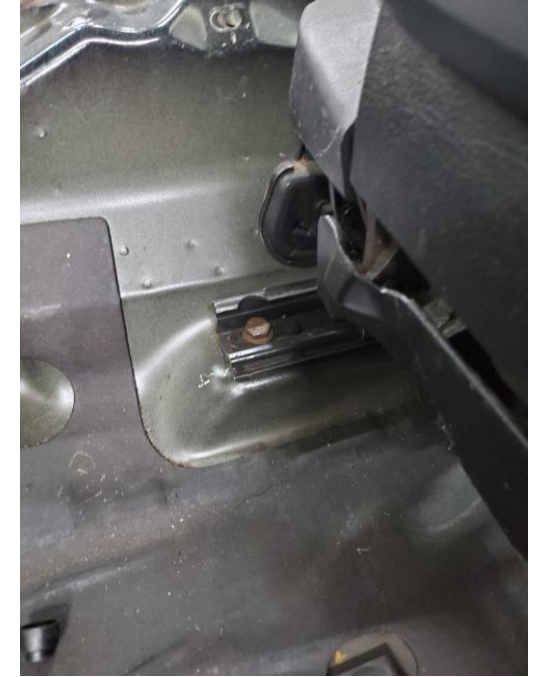
(Instructions apply to both passenger and driver seat)



Using flat head screwdriver, pop off plastic fastener covers on rear bolts.



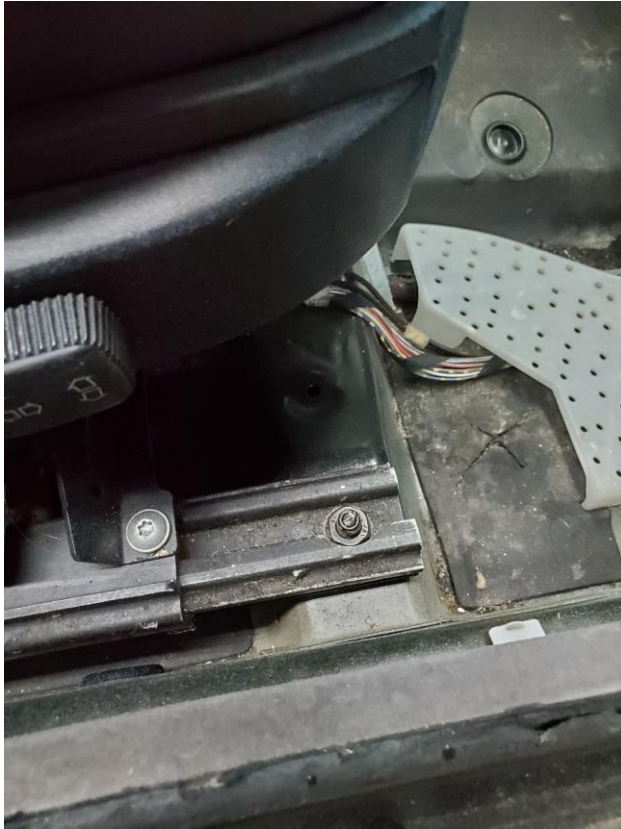
Using ratchet with extension and 16mm socket, remove outboard rear bolt.



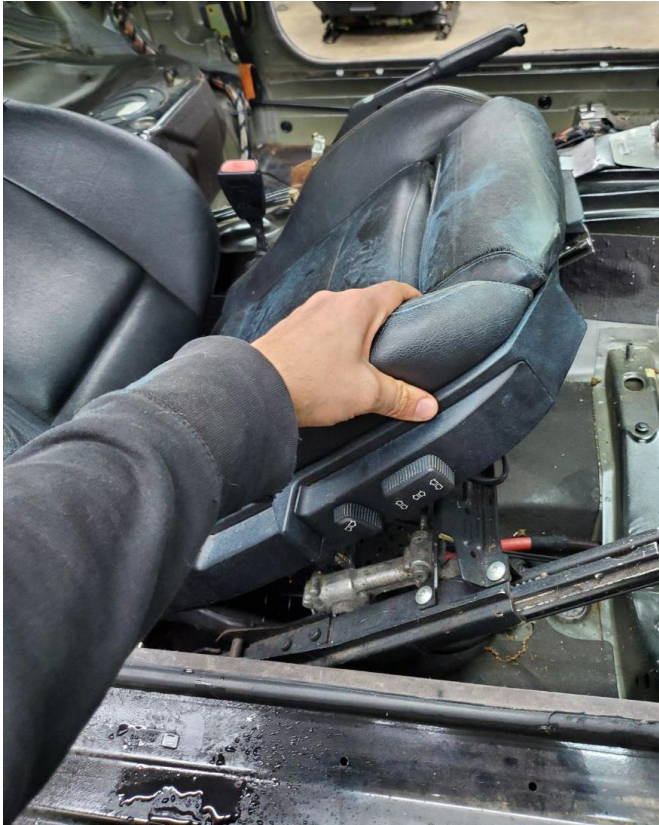
Repeat for inboard bolt.

Move seat to full forward position to access rear mounting bolts.

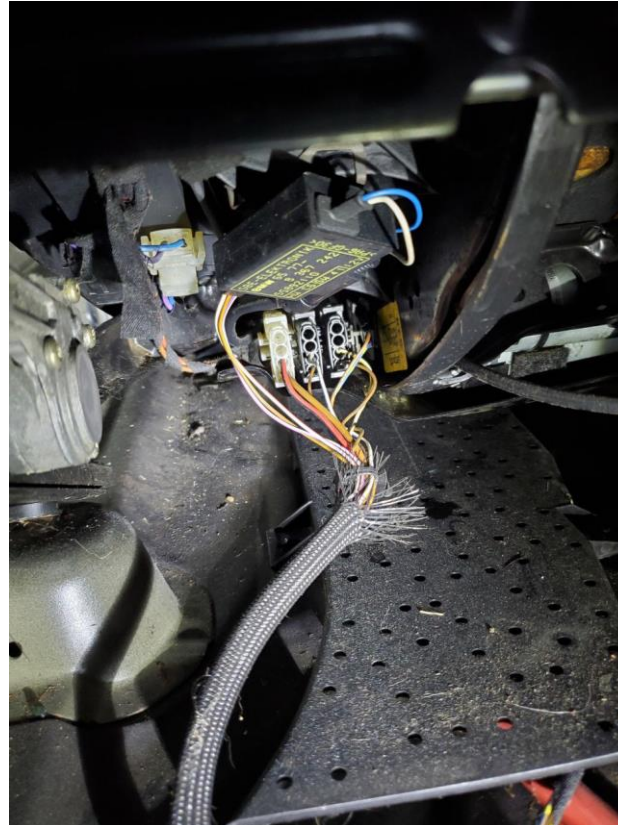




Move seat to full rear position to access front nuts. Pop off plastic nut covers, remove nuts with 16mm socket.



Carefully tip seat backwards to access wiring.



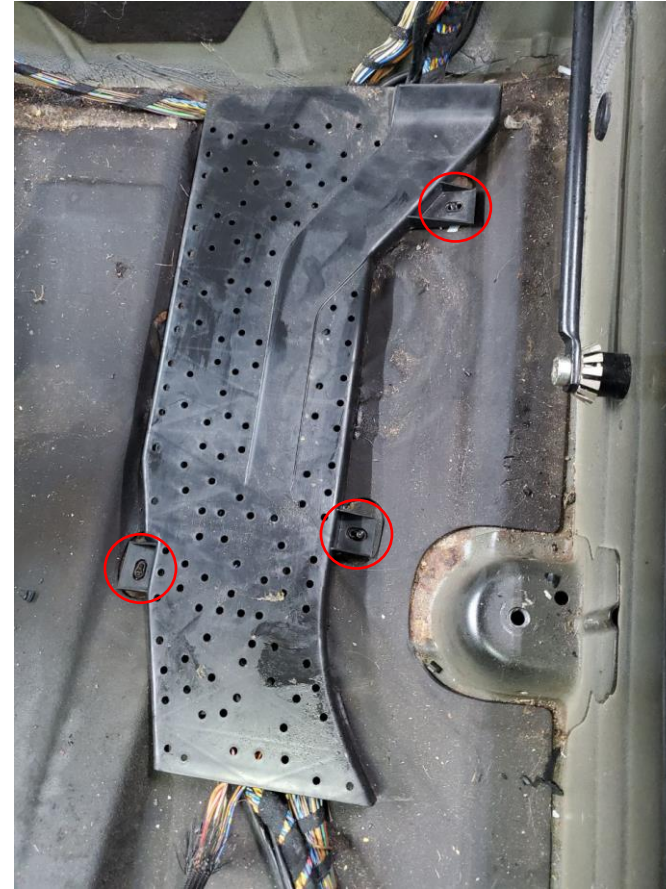
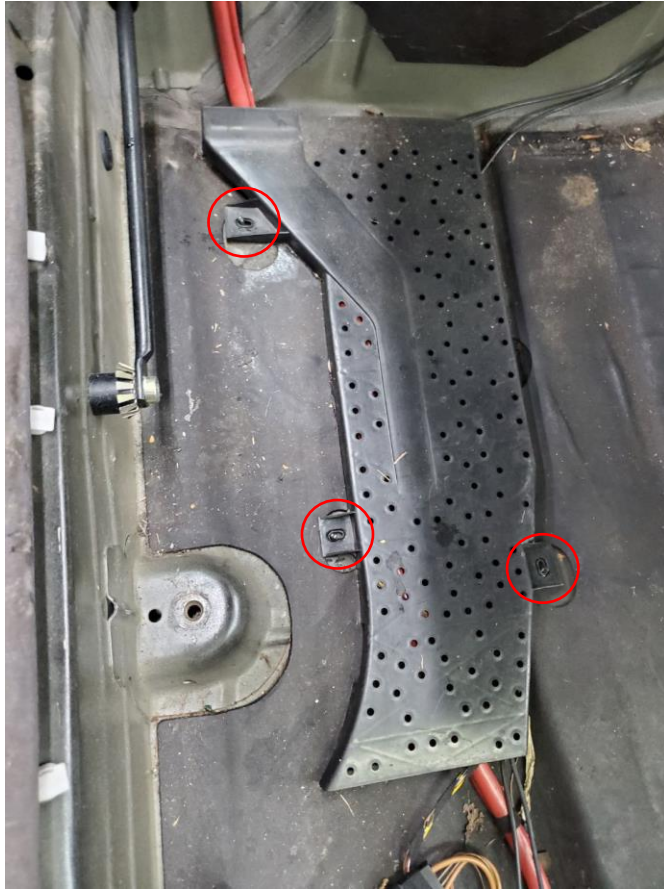
Identify and carefully disconnect the 3 large connectors and 2 small connectors.



Position wiring out of the way and carefully lift seat out of car, a helper may be needed for removal.



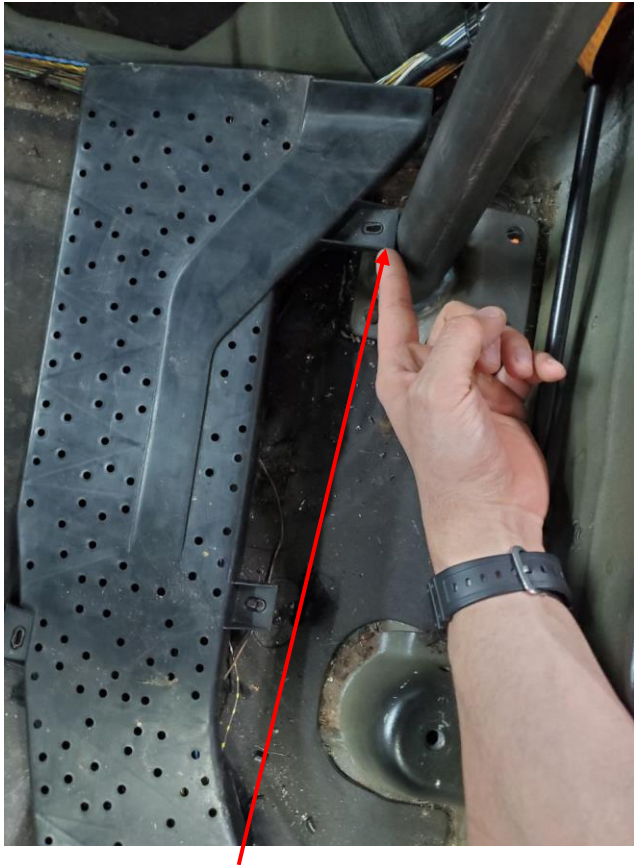
## Step 2: Remove and trim wire harness covers



Remove 3 plastic nuts securing under wire harness covers for both passenger and driver side.

(Carpet has been removed for clarity in these pictures, carpet can be retained with rollbar, pull carpet back to access wire covers if retaining carpet.)

Rearmost cover mounting tab interferes with rollbar (once installed).



Interference with tab.



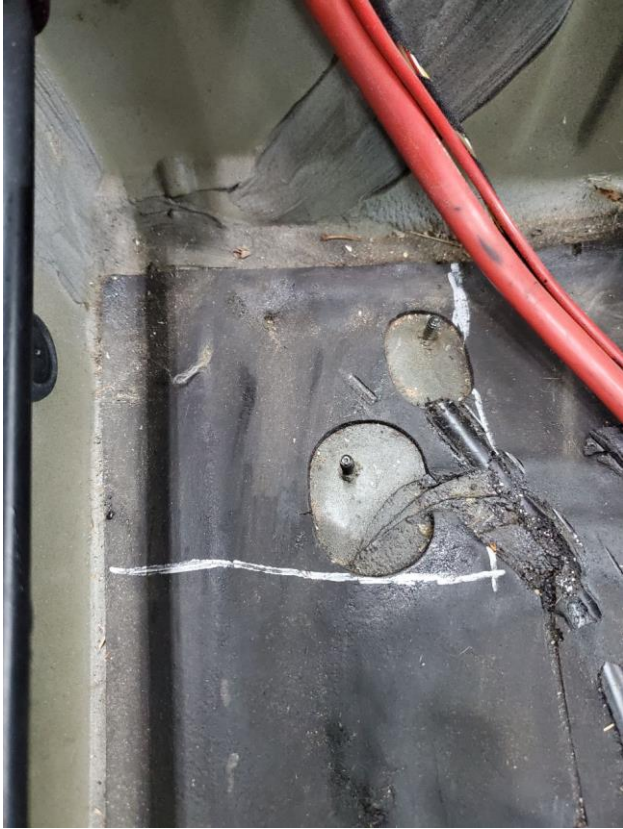
Utilizing shears or a razor blade, carefully remove rearmost mounting tab.



Interference removed, once installed wire cover can lay over rollbar baseplate.



## Step 3: Remove undercoating where baseplates will mount.



Measure and mark a 6" x 6" square measuring from the fuel tank bulkhead and the sill.



A heat gun may be helpful in softening the undercoating prior to scraping.

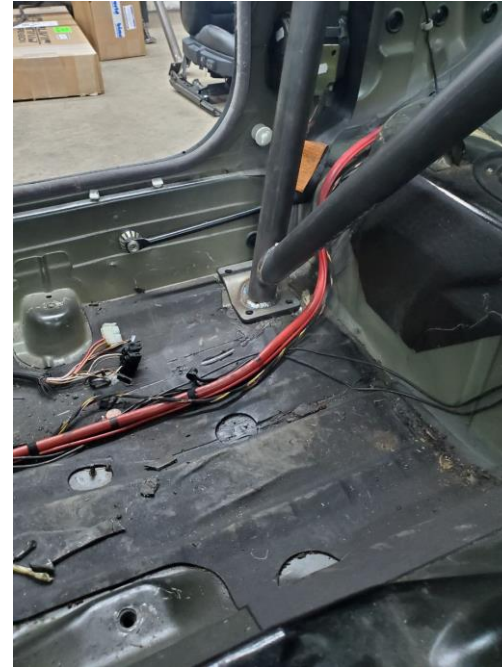


Utilize a scraper to remove all undercoating within 6"x6" square. All studs within this area will need to be removed - utilizing an electric or pneumatic grinder carefully remove the studs.



## Step 4: Insert rollbar into car.

(A helper will be required for this step)

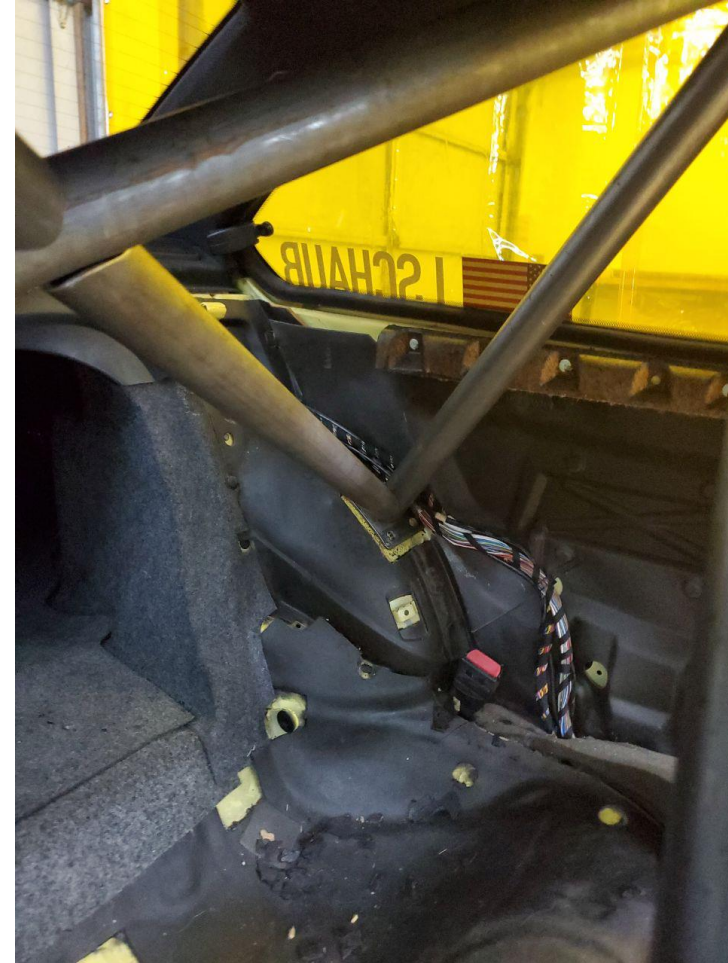


- Position roll bar next to passenger door entryway on the ground in position it will be installed in (main hoop facing forward and downbars facing rearward).
- With helper on driver side, lift roll bar through passenger door entryway until driver side leg clears transmission tunnel at which time helper can aid in guiding roll bar into position.
- Carefully position roll bar in installed position with front feet landing just forward of hump where fuel tank bulkhead transitions into floor.

## Step 5: Remove undercoating on wheel wells.



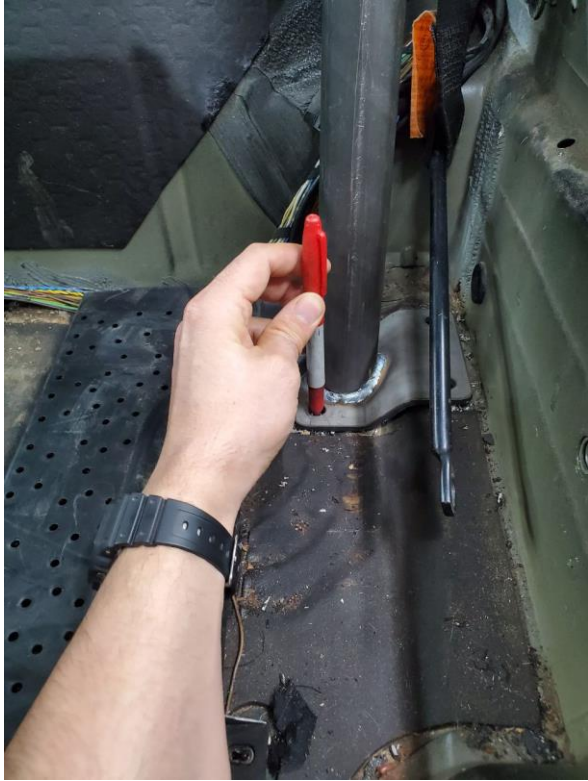
Using a marker, mark around rear downbar feet for undercoating removal.



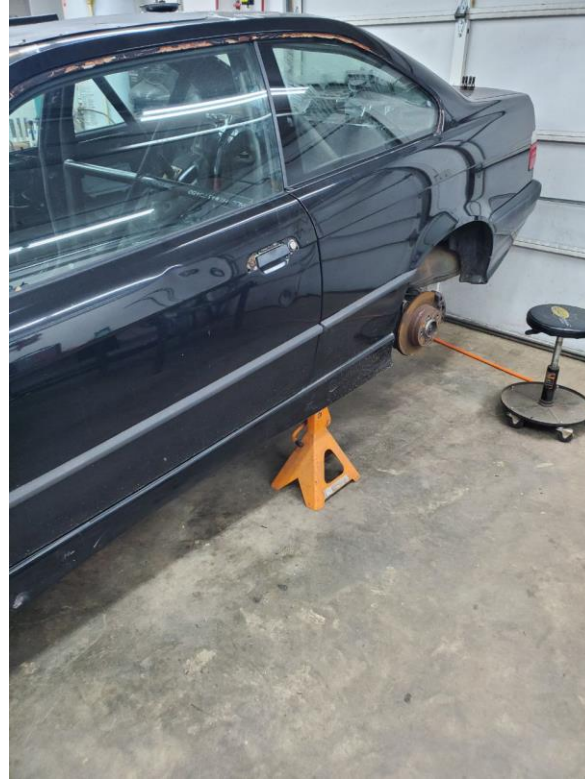
Slide bar forward and remove undercoating on wheel wells where marked. Slide rollbar back into position.



## Step 6: Drill mounting holes.

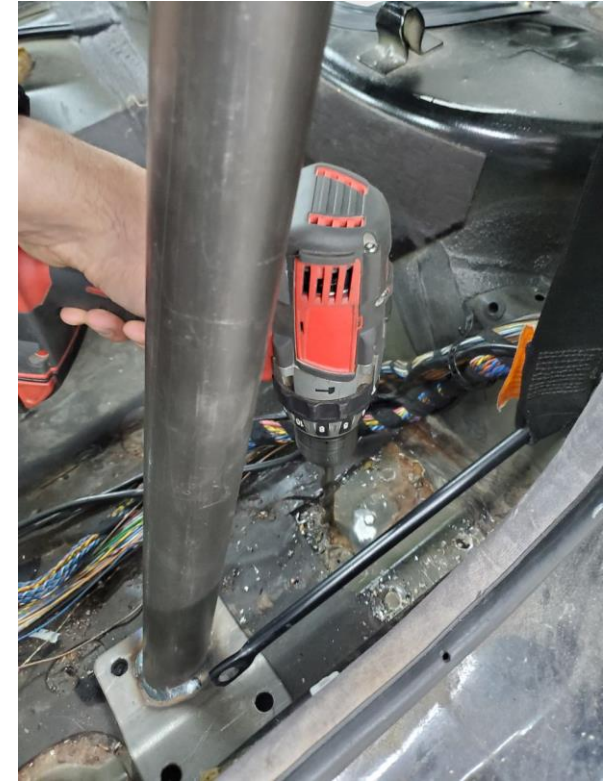


Slide rollbar back into installation position and mark hole locations for drilling. (repeat for both front and rear feet)



Jack up rear of car and lower safely onto jackstands, remove rear tires to gain access to wheel well.

**(DO THIS BEFORE DRILLING TO AVOID RISK OF PUNCTURING REAR TIRE)**



Utilizing a 7/16" drill bit, drill all holes, a punch is helpful to aid in centering the drill in marked locations. Slide rollbar back into position after drilling to verify holes line up.

## Step 6: Bolt in place.



Install rear downbar backing plates with curved contour matching wheel well. Install 30mm length bolts from wheel well into cabin. Loosely install nuts on inside. (a helper is required for this step)



Repeat for front backing plates with 35mm length bolts ensuring backing plate is oriented for best fitment to floor. TORQUE ALL NUTS/BOLTS TO **50FTLBS**.



- Reverse process for interior installation
- If retaining carpet, carpet can be laid over front mounting plates

**Congratulations on a successful installation of your investment in safety and performance!**

