

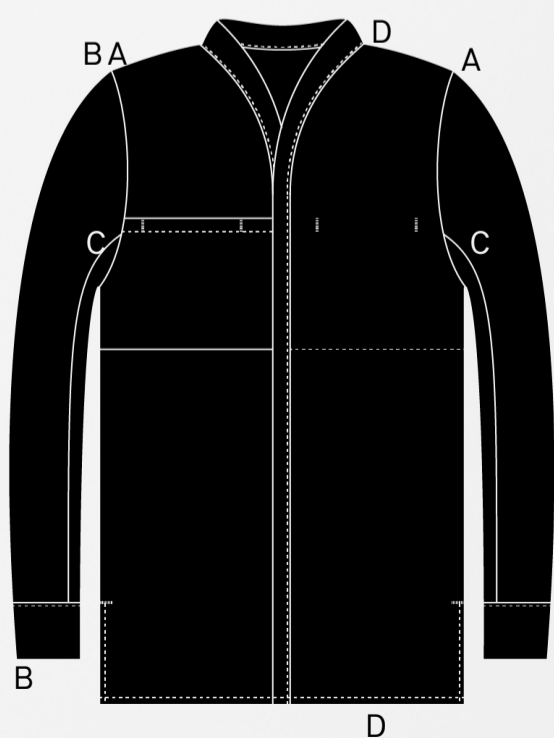


Comfortable loose-fit linen shirt for every day, day or night. Works as a blouse or as a jacket. Material has a light drape, soft feel and wrinkles in use.

443 Collar Blouse

Product info

- relaxed, loose fit
- two breast pockets, one outside the other one inside
- hidden front buttons
- slit in the sides



Color: Deep black
 Material: 100% Linen
 Fabric: Klasikine Tekstile, Kaunas, Lithuania
 Production: Oü Maidiga, Tallinn, Estonia
 Design: Nomen Nescio Oy, Mikonkatu 2, 00100 Helsinki, Finland

	XXS	XS	S	M	L	XL	XXL	
A-A	43	44.5	46	47.5	49	50.5	51	
B-B	62	63	64	65	66	67	68	
C-C	50	53	56	59	62	65	68	
D-D	73	74	75	76	77	78	79	cm