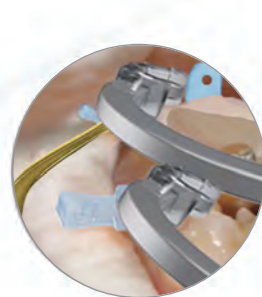


# The iMatrix™ Clear and Rodin™ Bond Direct Restoration Workflow



### STEP 1

Isolate tooth with clear wedges, clear bands, and clear ring



### STEP 2

Etch for 15 seconds with PacEtch Pro 38% Phosphoric Acid Etching Gel



### STEP 3

Apply SensiGuard 2-in-1 desensitizer and primer



### STEP 4

Apply Rodin Bond Adhesive and light cure surface



### STEP 5

Place Rodin Optiflow Flowable Composite or Rodin OptiComp Nano hybrid Composite



### STEP 6

Light Cure



### STEP 7

Finish and polish with iGlo or iMatrix Clear polishers for high esthetic finish

**NEW!**

# iMATRIX™ CLEAR

SECTIONAL MATRIX SYSTEM

*Uniform curing, Undercut clear ring, Unparalleled restorations*



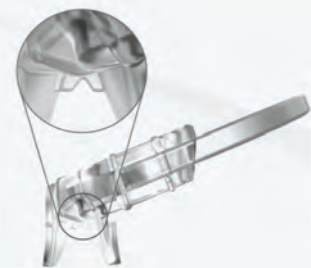
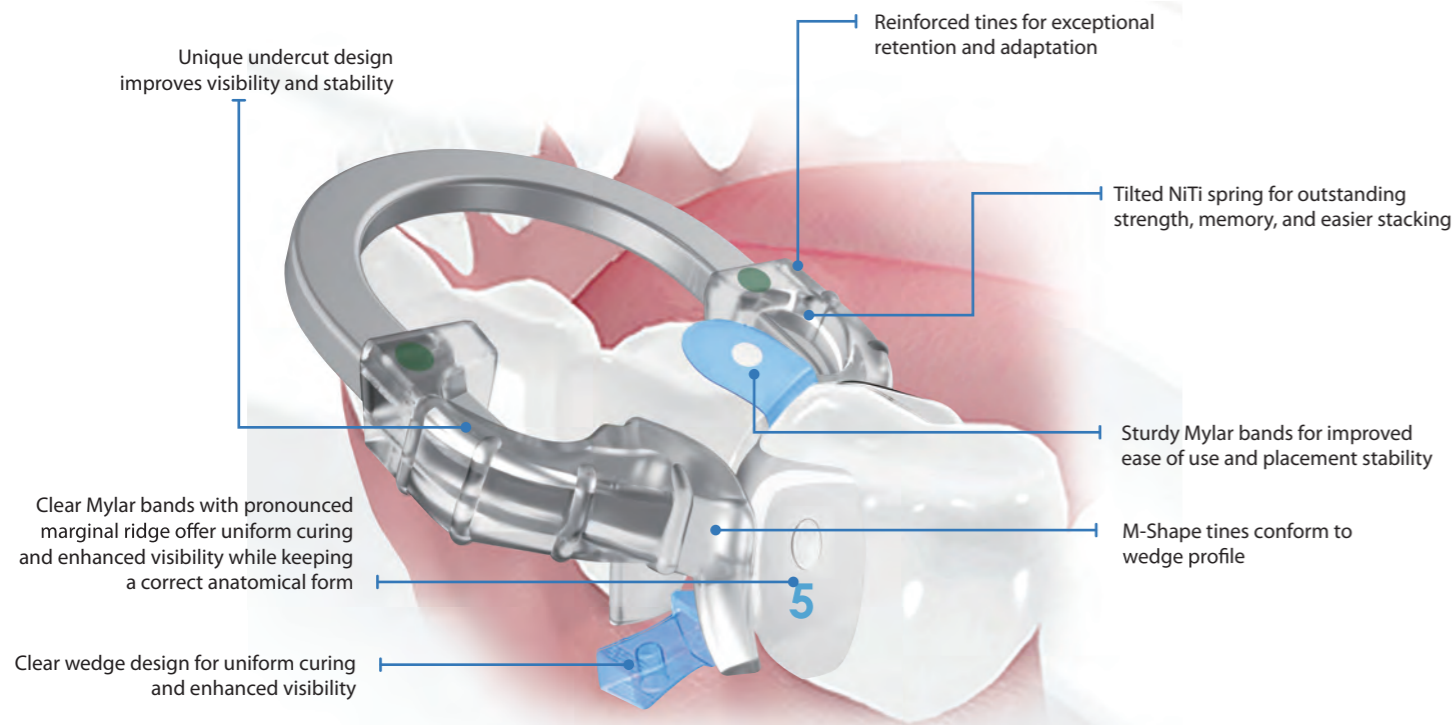
\*Patent Pending

Item Numbers:	Rodin™ OptiComp Nano hybrid Composites
471102 Rodin™ Bond Dental Adhesive Refill	PD-7701 A1, 4 gm syringe
481102 Rodin™ Bond Dental Adhesive: 100 pk Unit Dose Refill	PD-7702 A2, 4 gm syringe
481101 Rodin™ SensiGuard™ HEMA-based Desensitizing Agent	PD-7703 A3, 4 gm syringe
135 PacEtch™ Pro 38% Phosphoric Acid Etching Gel, 4x1.2 gm syringe	PD-7721 A1, 20x .2 Unit dose
901 Disposable Micro Applicators Standard, 400 per case (2.0mm)	Rodin™ Optiflow Flowable Composites, LC
PG-01 iGlo™ Silicon Polisher Combo Kit	8201 A1, 4x 1.5 gm syringe
231 Pre-Bent Etch Needle Tips, 100/pk	8202 A2, 4x 1.5 gm syringe
229 Pre-Bent Flowable Composite Tips, 100/pk	8203 A3, 4x 1.5 gm syringe
004 1000 disposable dappen dishes per box, assorted colors	8204 A3.5, 4x 1.5 gm syringe

## Benefits

- The iMatrix Clear Kit features anatomically correct matrices comprised of clear and sturdy Mylar. Sturdy Mylar matrices offer the same benefits of uniform curing and expanded visibility as traditional Mylar bands, but feature much greater strength for increased ease of use and stability.
- The Nickel-Titanium rings feature a unique undercut design for greater visibility and stability, when combined with new clear interproximal wedges, make the iMatrix Clear Sectional Matrix System the ideal solution for even the most tedious Class II restorations.
- Offers uniform curing, unparalleled visibility and consistent, high esthetic restorations.

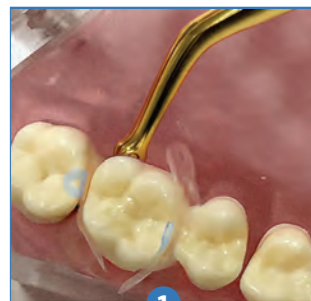
## No Mess, No Stress, Class II Restorations



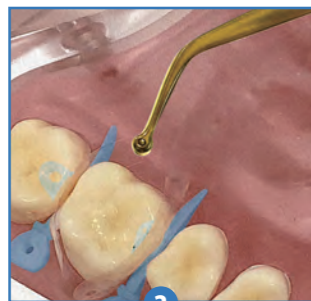
### NEW Clear Ring with Undercut Design

New iMatrix Clear NiTi Ring with undercut design for better access and tooth separation. Greatly expands viewable work area and minimizes curing light disruption for easier and more consistent restorations.

### IMPROVED CLASS II'S IN 4 EASY STEPS



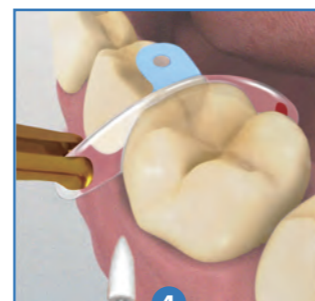
1 Using the pin tweezers, place a clear wedge from the lingual or buccal side



2 Place a clear matrix band with pin tweezers



3 Place a clear ring with the forceps on top of the wedge for ideal separation



4 Remove the clear ring with the forceps after restoration is complete and polish with iGlo or iMatrix Clear polishers

### iMatrix Clear Rings



- Unique undercut design greatly expands field of view and stability
- Clear ring enhances visibility and allows for uniform curing
- Outstanding NiTi spring strength and memory for optimal tooth separation force
- Convenient M-shaped tines provide guiding-rails for wedges
- Stackable for multiple restorations



### iMatrix Clear Mylar Bands

- Clear Mylar bands offer uniform curing and enhanced clarity
- Sturdy Mylar bands for improved ease of use and placement stability
- Leaves composite with a more polished and contoured finish
- Pronounced marginal ridge for correct anatomical form



### Clear Interproximal Wedges

- Clear design for uniform curing and greater visibility
- Wedge profile perfectly matches ring tines for easy entry and a superb seal
- Stackable wedge design



### Composite Polishing Kit

- Allows for fast and easy composite adjustments without polishing paste
- Provides an ideal, smooth and polished occlusal surface
- Eliminates restoration abrasiveness and opposing dentition
- Reusable, 3-step polishing system



### Forceps and Pin Tweezers

- Forceps lock and secure iMatrix Clear Ring at an ergonomically angled-grip
- Tweezer tip grips onto clear matrices and wedges firmly for perfect control

## BUY 3, Get 1 FREE

### 411201 iMatrix™ Clear Starter kit

- Contains:
- 1x Clear Green Standard Ring
  - 1x Clear Yellow Narrow Ring
  - 35x Clear Yellow Small Wedges
  - 35x Clear Blue Medium Wedges
  - 35x Clear Orange Large Wedges
  - 35x 4.5 mm Clear Red Matrices
  - 35x 5.5 mm Clear Blue Matrices
  - 35x 6.5 mm Clear Green Matrices
  - 1x iMatrix Forceps
  - 1x iMatrix Pin Tweezers
  - 1x Composite Polishing Kit
- (Reg. \$496.53) **Net: \$372.40**

### 411202 iMatrix™ Clear Intro kit

- Contains:
- 1x Clear Green Standard Ring
  - 1x Clear Yellow Narrow Ring
  - 35x Clear Yellow Small Wedges
  - 35x Clear Blue Medium Wedges
  - 35x Clear Orange Large Wedges
  - 35x 4.5 mm Clear Red Matrices
  - 35x 5.5 mm Clear Blue Matrices
  - 35x 6.5 mm Clear Green Matrices
- (Reg. \$362.69) **Net: \$272.01**
- 411212 1x Composite Polishing kit  
(Reg. \$105.99) **Net: \$79.49**
- PM-F1 1x iMatrix Forceps  
PM-T1 1x iMatrix Pin Tweezers  
(Reg. \$62.67)

### Clear Matrix Refill

- 411206 100x 4.5 mm Clear Red Matrices
  - 411207 100x 5.5 mm Clear Blue Matrices
  - 411208 100x 6.5 mm Clear Green Matrices
- (Reg. \$131.00) **Net: \$98.25**

### Clear Wedge Refill

- 411209 100x Clear Yellow Small Wedges
  - 411210 100x Clear Blue Medium Wedges
  - 411211 100x Clear Orange Large Wedges
- Reg. \$58.45 **Net: \$43.84**

### Clear Ring Refill

- 411203 1x Clear Green Standard Ring
  - 1x Clear Yellow Narrow Ring
  - 411204 2x Clear Green Standard Ring
  - 411205 2x Clear Yellow Narrow Ring
- (Reg. \$204.29) **Net: \$153.22**