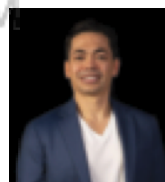


# NEW PRODUCT TRANSFORMS 3D RESTORATIONS

Discover how Rodin Bond offers exceptional bond strength and patient comfort in a game-changing package

By Robert C. Drury, DDS

**ROBERT C. DRURY, DDS**, has been providing high-quality dentistry for more than 17 years in San Diego, California. Staying on the forefront of dental technology, Drury's practice employs cone-beam computed tomography systems and he is an expert in implant therapy. As a sought-after lecturer, he shares his expertise with fellow dentists and also serves as a mentor to new dental graduates.



**A**s a dentist who has ventured into the world of 3D printing for dental restorations, I can attest to the anticipation that comes with embracing cutting-edge technologies. One such advancement is the Rodin™ Bond – a dental adhesive that is poised to redefine bonding experiences in the realm of direct and indirect 3D printed restorations.

With Rodin Bond, I was introduced to a versatile light-cured adhesive that has been meticulously designed to elevate the art of bonding. The strength of a restoration depends on its bond with the natural tooth structure. This is where Rodin Bond stands out, thanks to its incorporation of state-of-the-art glass filler technology. This innovation not only fortifies the hybrid zone but also penetrates the dentin tubules with remarkable efficacy. The result? An exceptional bond strength that outshines conventional unfilled adhesive systems.

## DYNAMIC DUO

As I embarked on my initial trials with Rodin Bond, I was struck by the synergy it shares with another remarkable product: Rodin Sensiguard. This dynamic duo takes bonding to new heights. The 2-in-1 functionality of Rodin Sensiguard as a desensitizer and primer amplifies the bond strength while safeguarding against post-operative sensitivity. This holistic approach to bonding not only establishes a secure connection but also seals dentin tubules, preventing sensitivity and minimizing the risk of caries formation beneath the restoration.

The Rodin Bond and Rodin Sensiguard boast an intuitive flip-top cap design that revolutionizes adhesive application. As a practitioner, efficiency is key and this design streamlines my workflow significantly. The precise “one-drop” dispensing mechanism allows for accurate placement with a single hand, eliminating

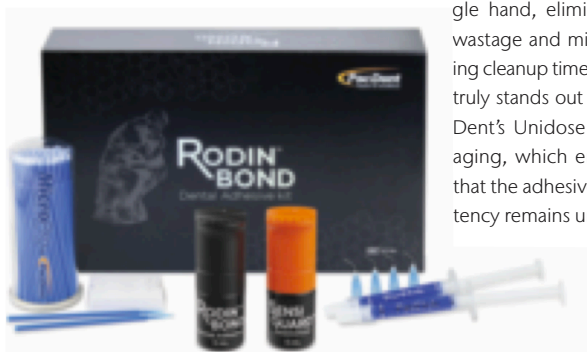
wastage and minimizing cleanup time. What truly stands out is Pac-Dent's Unidose packaging, which ensures that the adhesive's potency remains uncom-

promised by shielding it from the damaging effects of air and moisture.

## WIDE RANGE OF FEATURES

Rodin Bond and Rodin Sensiguard offer the following benefits:

- **Best-in-Class Adhesion:** The incorporation of nano-hybrid glass filler technology ensures exceptional bond strength across a wide array of dental materials. This adaptability opens up exciting possibilities for a range of restorative procedures.
- **Full Compatibility:** Whether I'm working with light-cured, self-cured, or dual-cured composite materials on direct or indirect restorations, Rodin Bond adapts to different techniques, streamlining my clinical approach.
- **Efficiency Redefined:** The flip-top cap design not only saves time but also ensures precise adhesive application. The innovative Unidose packaging takes this efficiency a step further by preserving the adhesive's efficacy.
- **Complete Solution:** By combining Rodin Bond with Rodin™ Sensiguard, I can provide my patients with a comprehensive bonding solution that not only enhances the durability of restorations but also prioritizes their comfort and oral health. The sealing of dentin tubules adds a layer of protection against sensitivity, fostering patient satisfaction.



## CONCLUSION

Rodin Bond aligns perfectly with my pursuit of excellence by providing a robust and versatile bonding solution. The fusion of cutting-edge technology and patient-centric innovation has reaffirmed my commitment to Pac-Dent as a platform for my dental aspirations. As a dentist who is stepping into the future of dentistry, I can confidently say that Rodin Bond has set a new benchmark for bonding experiences, and I'm eager to witness the transformative impact it will have on my practice and my patients' smiles.

**PAC-DENT**  
PAC-DENT.COM  
909-839-0888