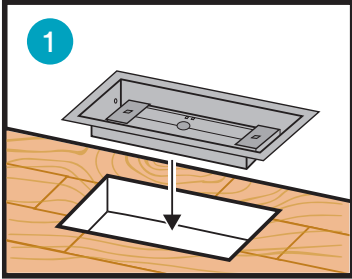


Top Mount Installation Guide

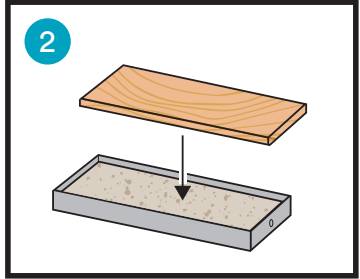
Materials Needed

- Pre-cut piece of surface material for tray insert. (Size will vary for vent sizes).
- Bonding material (will vary for flooring materials).



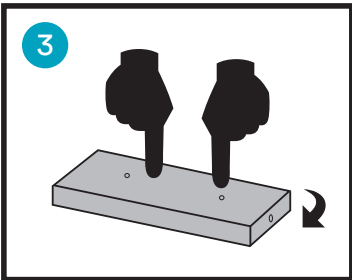
1

Dry fit Aria Vent body piece in opening.



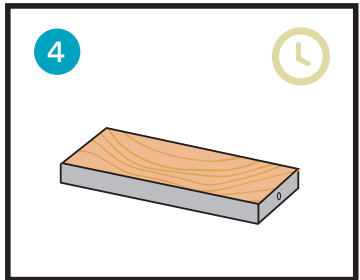
2

Apply adhesive bonding material in tray. Insert pre-cut flooring material.



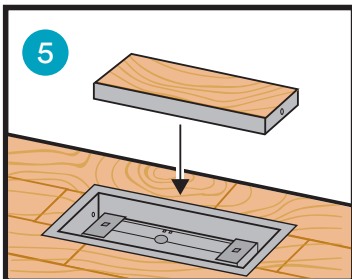
3

Hold in place. Flip tray upside down. Apply even pressure until flooring material lies flat with rim of tray.



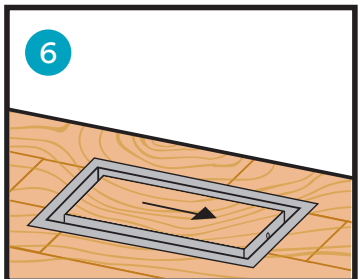
4

Leave bonding material to cure.



5

Insert tray in body.



6

Slide in place. Enjoy!

Control Air Flow

Slide to remove tray and adjust flange open and closed.

Additional Support

support@ariavent.com / www.ariavent.com