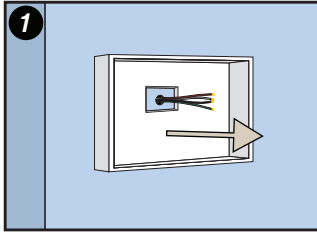


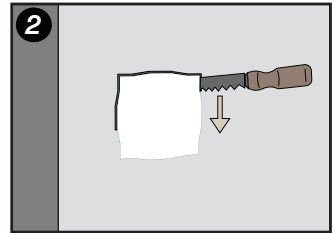
ARIA

Framed Device Mount Device Installation

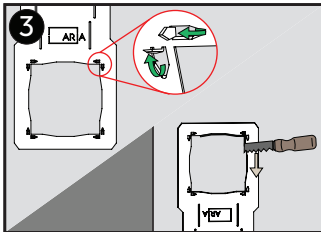
Visit www.ariavent.com for more information



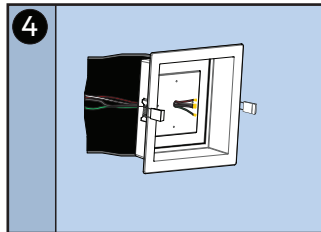
1 Disconnect power and remove device from wall



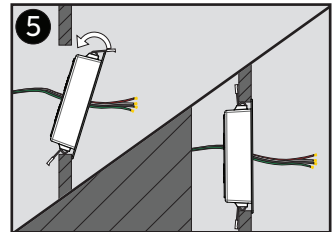
2 Using dotted line on instruction guide, cut hole to allow **Mount** to be inserted.



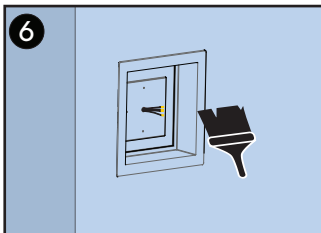
3 **Optional:** Use **Smash Plate** as guide, secure to wall using pins as a stamp.



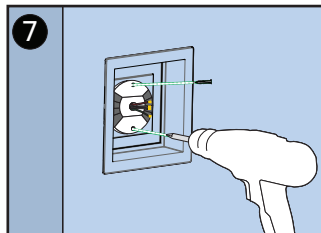
4 Feed wires through pre-drilled hole and place the **Mount** in the cavity.



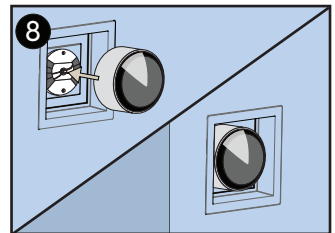
5 Squeeze spring clips through wall opening. Spring tension will secure the **Mount** in place.



6 Paint to match the surface.



7 Secure device following the instructions of particular model being used.

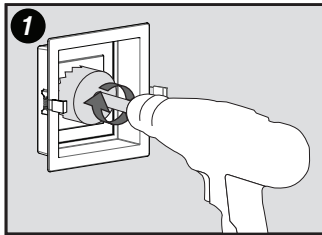


8 Connect device, turn on power and enjoy!

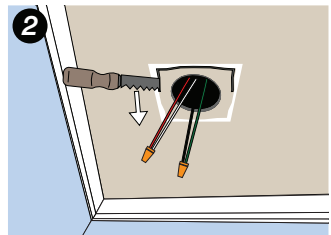
ARIA

Framed Device Mount Pot Light Installation

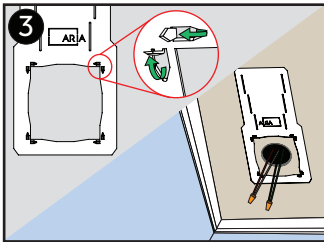
Visit www.ariavent.com for more information



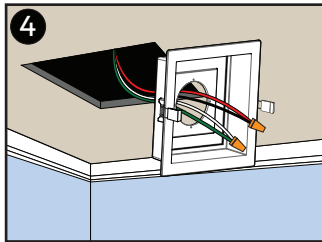
Drill hole in **Mount** sized according to dimensions of the pot-light being used.



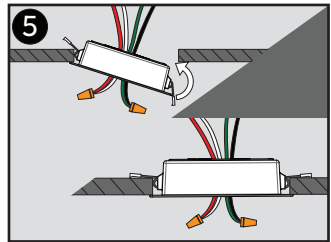
Using dotted line on instruction guide, cut hole to allow **Mount** to be inserted.



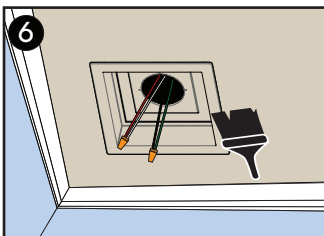
Optional: Use **Smash Plate** as guide. Secure to ceiling using pins as a stamp.



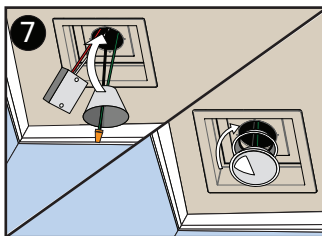
Disconnect power and feed wires through ceiling and **Mount**.



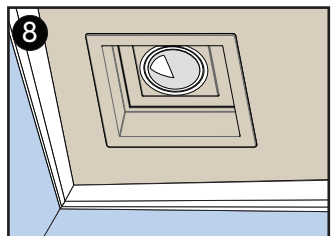
Squeeze spring clips through ceiling opening. Spring tension will secure the **Mount** in place.



Paint to match surface.



Connect wires and place components through hole. Individual pot light install may vary.

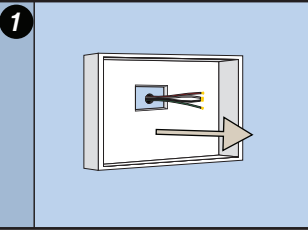


Enjoy!

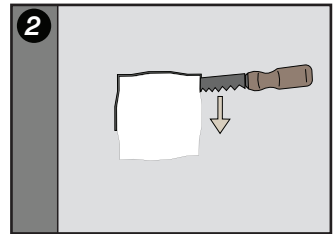
ARIA

Flush Device Mount Device Installation

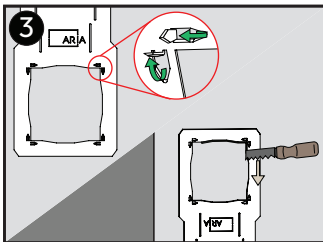
Visit www.ariavent.com for more information



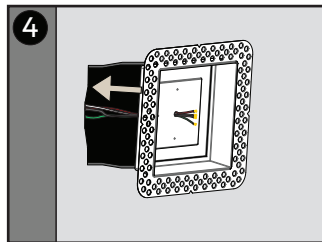
1 Disconnect power and remove device from wall



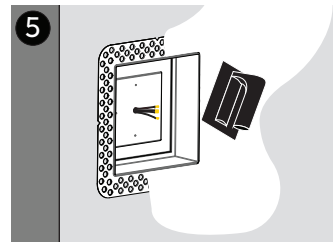
2 Using dotted line on instruction guide, cut hole to allow **Mount** to be inserted.



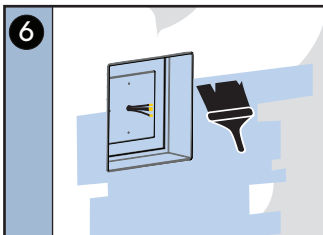
3 **Optional:** Use **Smash Plate** as guide, secure to wall using pins as a stamp.



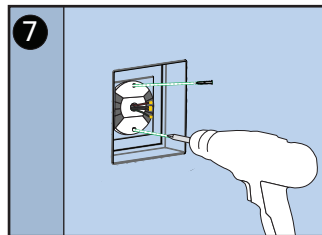
4 Feed wires through pre-drilled hole and place the **Mount** in the cavity.



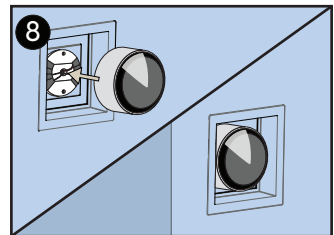
5 Use drywall compound mud to cover flange. Once dry, sand. Repeat as needed.



6 Paint to match surface.



7 Secure device following instructions of particular model being used.

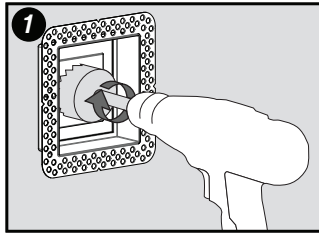


8 Connect device, turn on power and enjoy!

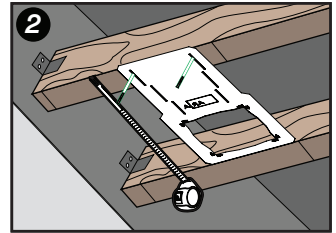
ARIA

Flush Device Mount Pot Light Installation

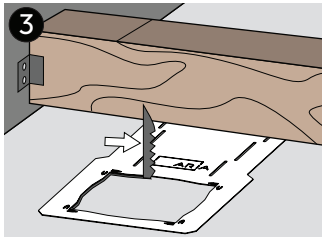
Visit www.ariavent.com for more information



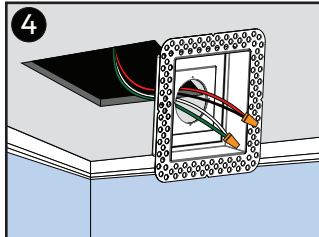
1 Drill hole in **Mount** according to the dimensions of the pot-light being used.



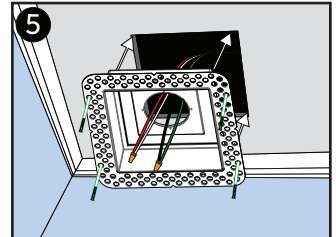
2 Secure **Smash Plate** using using nails or **wood screws**.



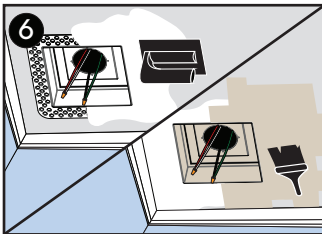
3 Once drywall is installed, use the **Smash Plate** as a guide to cut a hole.



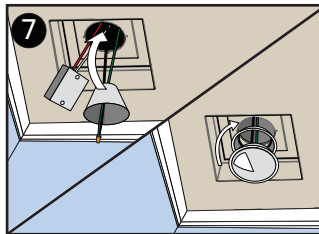
4 Disconnect power and feed wires through ceiling and **Mount**.



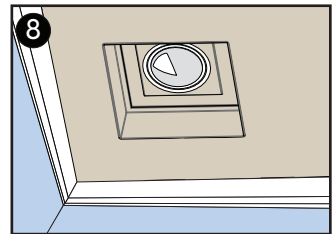
5 Secure **Mount** using staples or drywall screws.



6 Use drywall compound mud to cover flange. Once dry, sand. Repeat as needed. Paint to match surface.



7 Connect wires and place components through hole. Individual pot-light install may vary.



8 Enjoy!