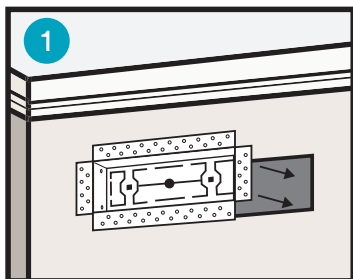
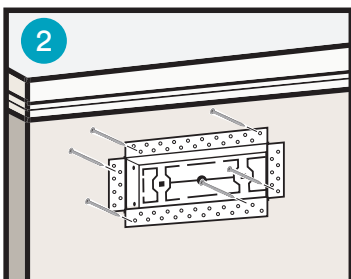


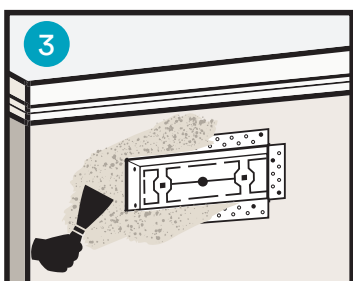
Drywall PRO - Installation Guide



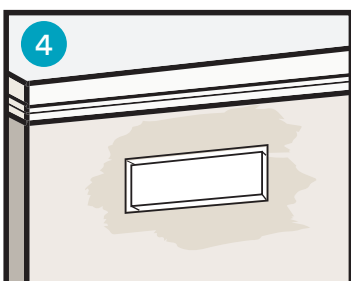
Dry fit body into vent opening.



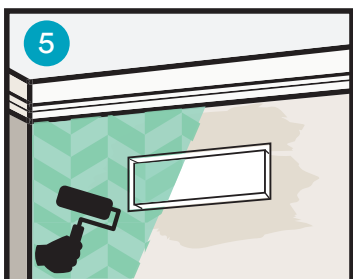
Ensure flange is flat to the wall. Use screws to fasten as needed.



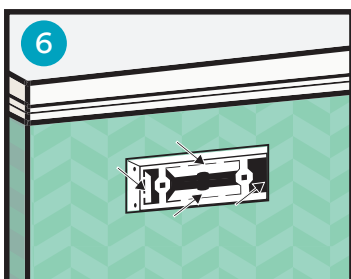
Use mud to cover flange surface. Wait to dry.



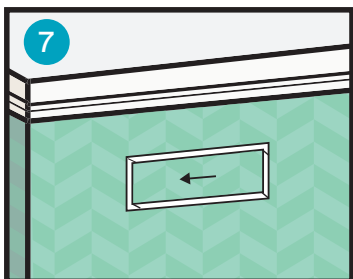
Sand mud so surface transitions smoothly. Repeat steps 3, 4 as needed.



Paint walls and surface of tray insert. *Can also be used with wallpaper.



For optimal air flow, slide tray and push open flanges beyond 90°.



Insert and slide tray in place. Enjoy!

Additional Support

support@ariavent.com / www.ariavent.com