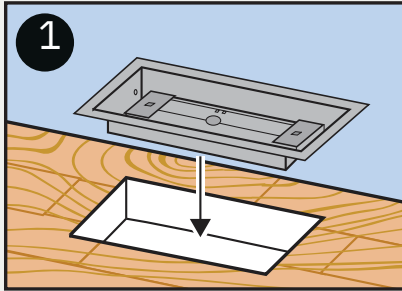
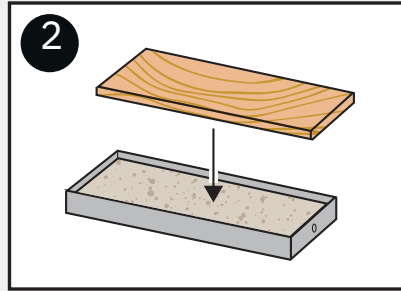


Materials Needed

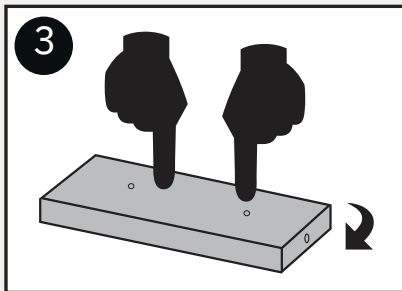
- Pre-cut piece of surface material for tray insert. (Size will vary for vent sizes).
- Bonding material (will vary for flooring materials).



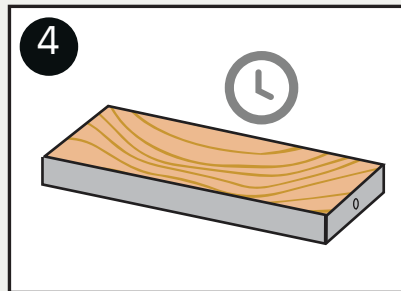
1 Dry fit Aria Vent body piece in opening.



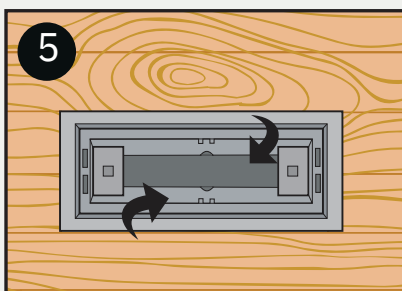
2 Apply adhesive bonding material in tray. Insert flooring material.



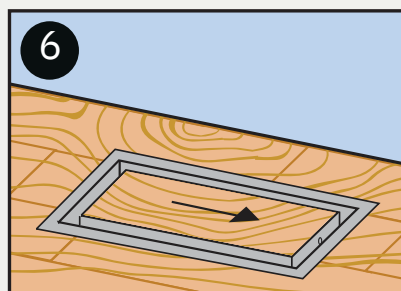
3 Hold in place. Flip tray upside down. Apply even pressure until flooring material lies flat with rim of tray.



4 Leave bonding material to cure.



5 To open air flow, push down the dampers in body. This can be done anytime after install.



6 Insert tray. Slide in place. Enjoy!

Control Air Flow

Slide to remove tray and adjust flange open and closed. For optimal air flow, push flanges past 90°.

Additional Support

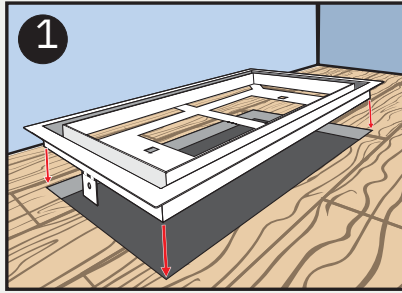
support@ariavent.com / www.ariavent.com

ARIA

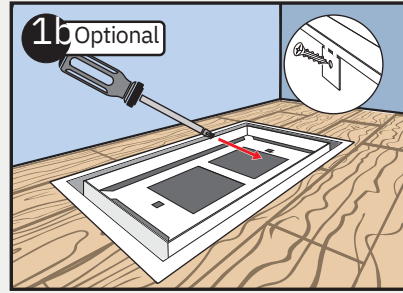
Framed OG Floor Vent [Luxe]
Return
Install Guide

Materials Needed

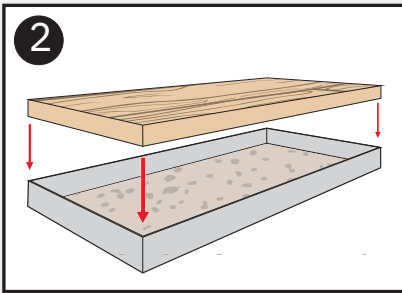
- Pre-cut piece of surface material for tray insert
- Size will vary depending on model
- Bonding material (will vary for flooring materials) - 2x self tapping screws (optional)



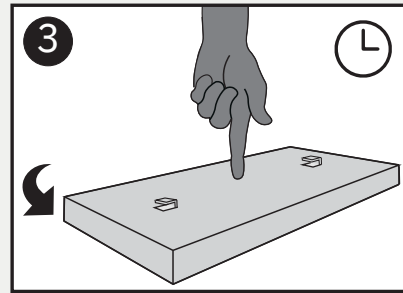
1 Dry fit Aria Vent body piece in opening.



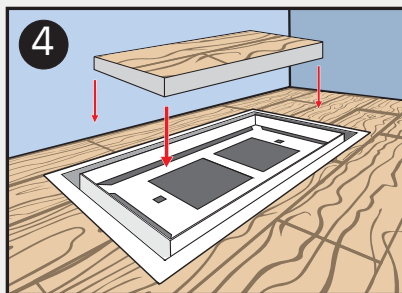
1b Optional Secure vent with screws.



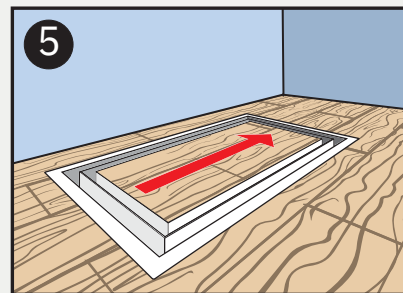
2 Apply adhesive bonding material in tray. Insert pre-cut flooring material.



3 Flip tray and allow bonding material to cure. Ensure flooring material is flush with the rim.



4 Insert tray into the body.



5 Slide in place. Enjoy!

Additional Support

support@ariavent.com / www.ariavent.com / @ariavent

Patent information

www.ariavent.com/pages/patents

