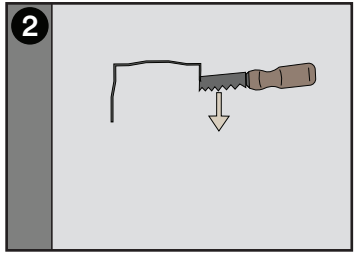
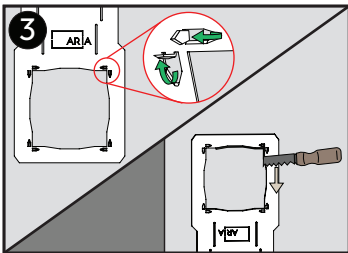


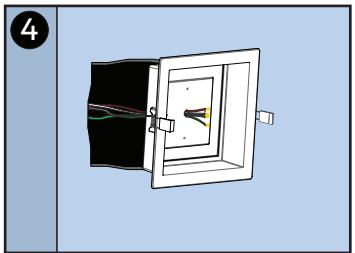
1 Disconnect power and remove thermostat from wall



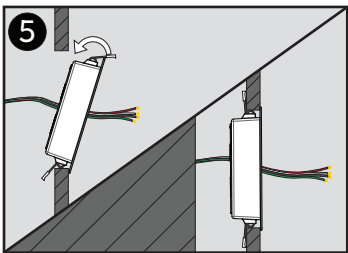
2 Cut hole to allow **Mount** to be inserted.



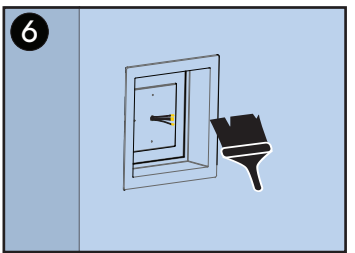
3 **Optional:** Use **Smash Plate** as guide, secure to wall using pins as a stamp.



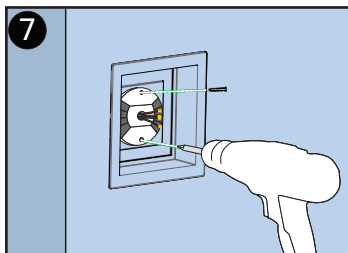
4 Feed wires through pre-drilled hole and place the **Mount** in the cavity.



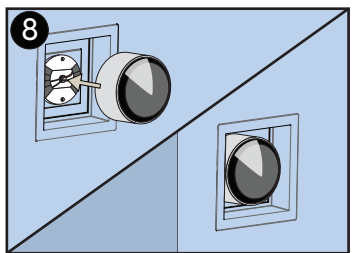
5 Squeeze spring clips through wall opening. Spring tension will secure the **Mount** in place.



6 Paint to match the surface.



7 Secure thermostat base following the instructions of particular model being used.



8 Connect thermostat, turn on power and enjoy!