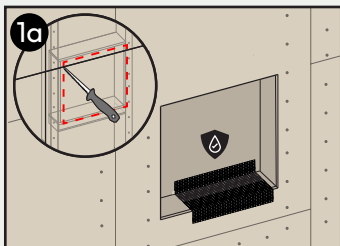


Materials Needed

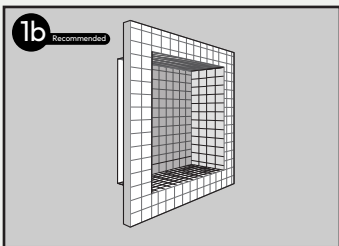
- Pre-cut 10 15/16" x 10 15/16" piece of surface material for Tray (Step 3)
10 15/16" x 18 15/16" for 12" x 20" model
- Bonding material (will vary depending on surface material)



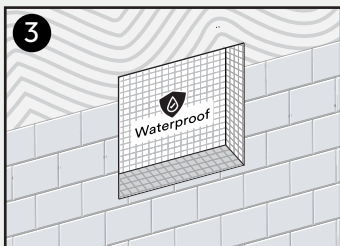
Ensure all protective plastic film is removed prior to use.



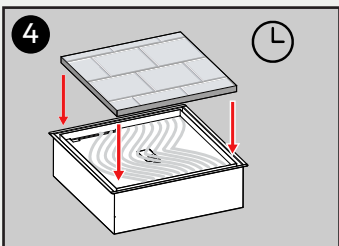
Prep and waterproof a niche sized according to **Shower Niche** product.



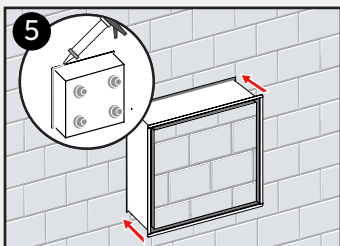
Install compatible waterproof **Shower Niche** system. See product specs on website for details.



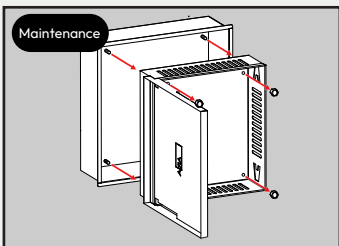
Install tile to surrounding wall. **DO NOT** tile within the **Niche**.



Apply silicone in **Tray**. Set pre-cut **Tray** insert into place. Allow time to cure.



Apply silicone around the underside of the frame and 4 large masses on the back of the **Body**. Fit into place.



For maintenance purposes, acorn bolts can be removed to access the **Base**.

Additional Support

support@ariavent.com / www.ariavent.com

Patent Information

www.ariavent.com/pages/patents



Made in Canada

