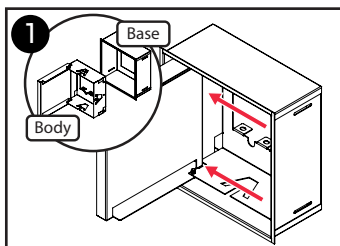
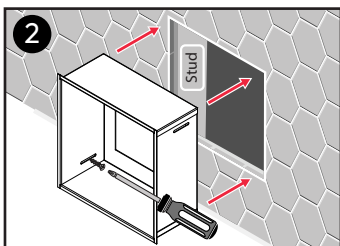


## Materials Needed

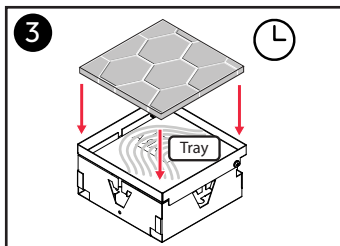
- Pre-cut piece of surface material for Tray insert.  
\*Size will vary depending on model.
- Bonding material (will vary depending on surface material)
- 4x self tapping screws



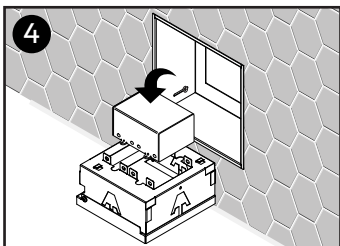
Disengage **Body** from **Base** by pushing firmly towards the hinged walls' innermost corner with the **Door** ajar.



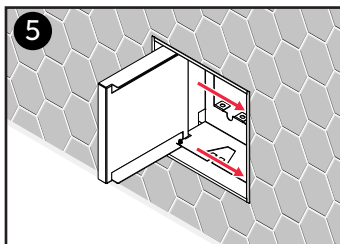
Dry fit **Base** into wall. Fasten **Base** to stud using provided pilot holes as necessary.



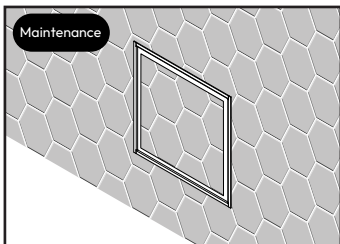
Apply silicone in **Tray**. Set pre-cut **Tray** insert into place. Allow time to cure.



Using the screws in the utility box, fasten the utility box to the rear of **Body** component.



Re-engage **Body** by aligning latches and pushing firmly towards the inner corners opposite of the hinged **Door**.



To hardwire electrical, have an electrician repeat steps #1 & #5 to access utility box.

\*NOTE\* To easily open the **Door**, simply press the side that has hinges. The **Door** will pop open!

## Additional Support

support@ariavent.com / www.ariavent.com

## Patent Information

www.ariavent.com/pages/patents



Made in Canada

