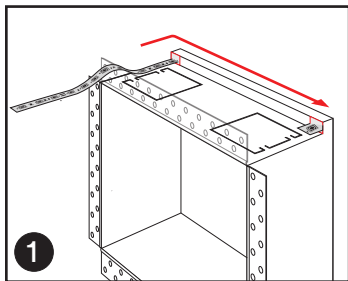
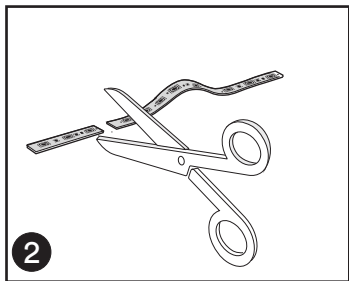


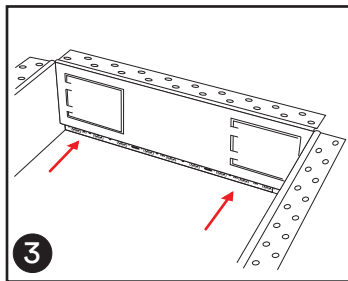
Anywhere Niche LED Integration Guide



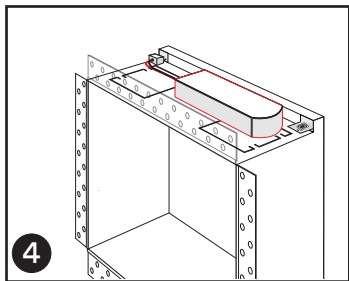
Line LED light strip along the inner top channel. Strip should not exceed channel width of $\frac{1}{2}$ inch.



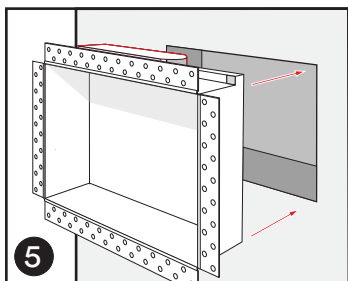
Cut LED light strip length to size.



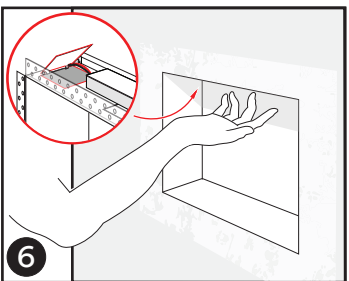
Use adhesive to secure the LED strip to the roof of the channel.



Connect the solderless clamp to the LED Strip, and attach the converter.



Lay the converter along the top support. Dryfit and connect power.



Maintenance post installation can be done through the concealed hinge doors.

Additional Support

support@ariavent.com / www.ariavent.com