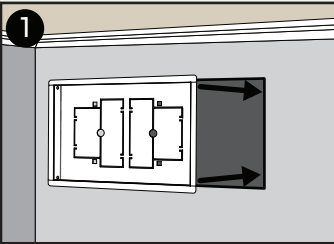


## Materials Needed

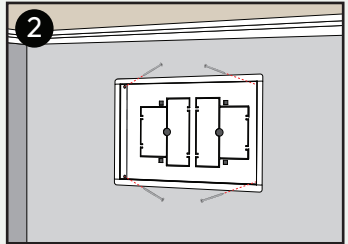
- Screw driver or drill
- Mounting screws included in box

### \*IMPORTANT\*

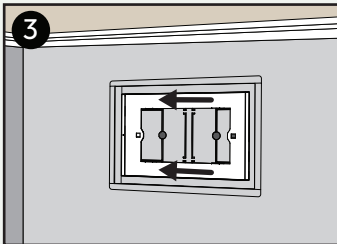
- For wall and ceiling surfaces ONLY
- DO NOT Install on floors!



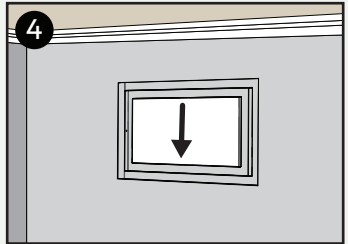
Dry-fit **Base** into vent opening.



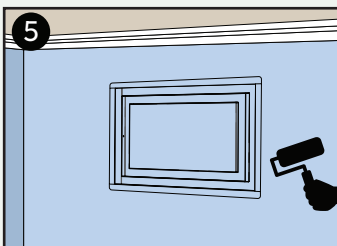
Ensure flange is flat to the wall.  
Use screws to fasten as needed.



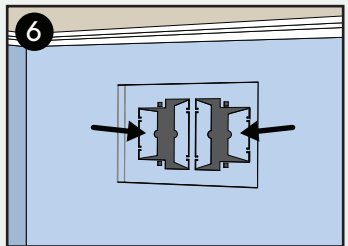
Insert **Body** and slide into place until secured.



Insert **Tray** by sliding perpendicular to **Body**.



Paint or wallpaper to match surrounding surface and enjoy!



To adjust airflow, remove **Trays** and bend dampers located in **Base** to desired position.

## \*Control Air Flow\*

Slide to remove Tray and adjust dampers open and closed. For optimal air flow, push flanges past 90°

### Additional Support

support@ariavent.com / www.ariavent.com

### Patent Information

www.ariavent.com/pages/patents

