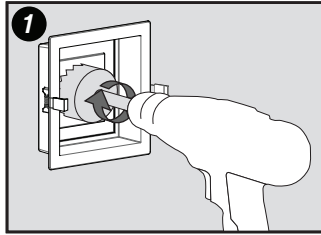


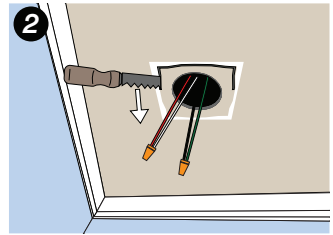
ARIA

Framed Device Mount Pot Light Installation

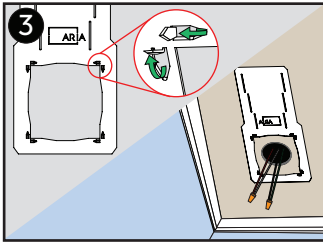
Visit www.ariavent.com for more information



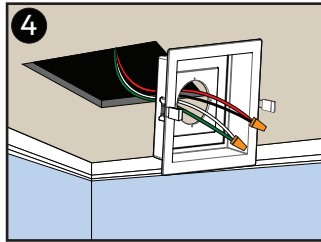
Drill hole in **Mount** sized according to dimensions of the pot-light being used.



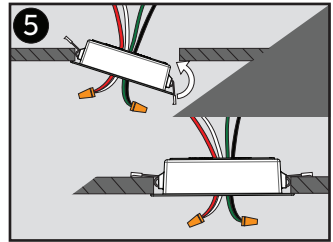
Using dotted line on instruction guide, cut hole to allow **Mount** to be inserted.



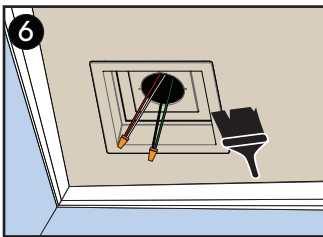
Optional: Use **Smash Plate** as guide. Secure to ceiling using pins as a stamp.



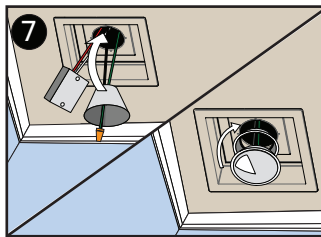
Disconnect power and feed wires through ceiling and **Mount**.



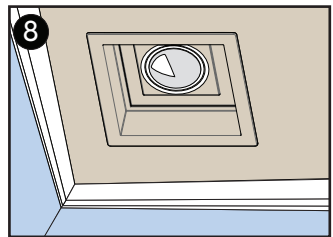
Squeeze spring clips through ceiling opening. Spring tension will secure the **Mount** in place.



Paint to match surface.



Connect wires and place components through hole. Individual pot light install may vary.



Enjoy!