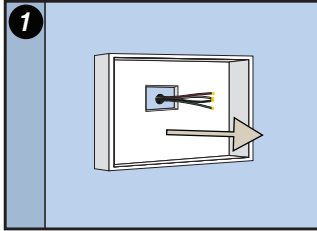


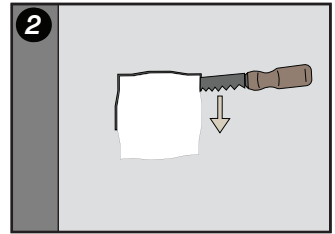
ARIA

Framed Device Mount Device Installation

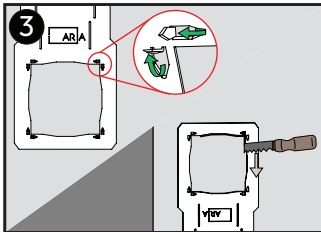
Visit www.ariavent.com for more information



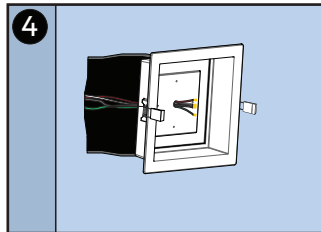
1 Disconnect power and remove device from wall



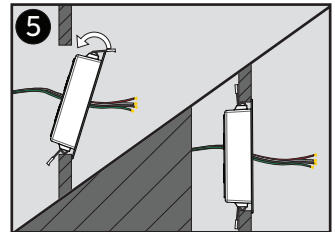
2 Using dotted line on instruction guide, cut hole to allow **Mount** to be inserted.



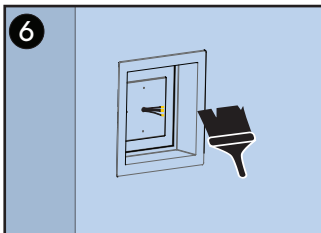
3 **Optional:** Use **Smash Plate** as guide, secure to wall using pins as a stamp.



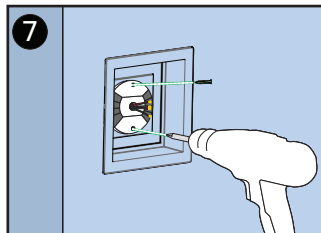
4 Feed wires through pre-drilled hole and place the **Mount** in the cavity.



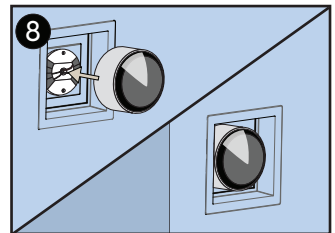
5 Squeeze spring clips through wall opening. Spring tension will secure the **Mount** in place.



6 Paint to match the surface.



7 Secure device following the instructions of particular model being used.



8 Connect device, turn on power and enjoy!