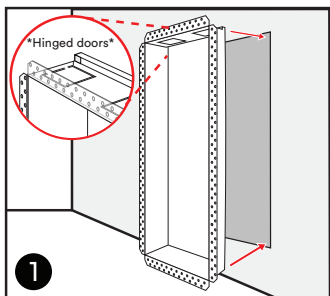
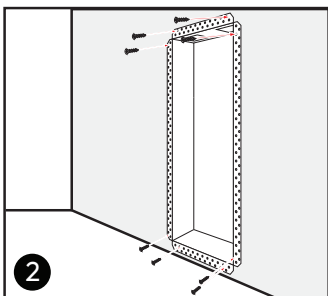


Note

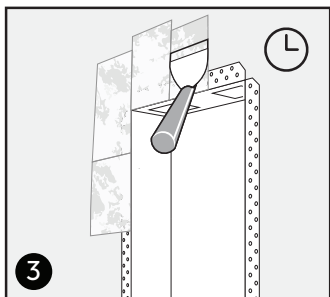
- LED light strip must be integrated prior to installation.
- *See back for more instructions*



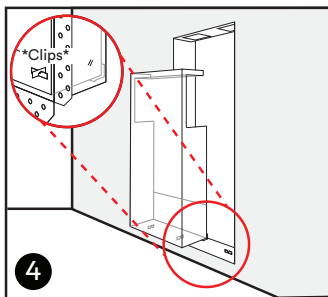
1 Dry fit body into vent opening. Hinged doors should be on the top.



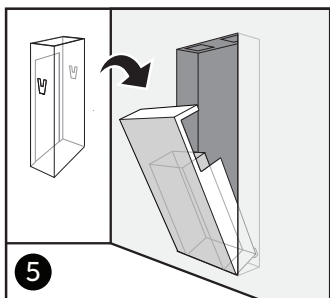
2 Ensure flange is flat to the wall. Use screws to fasten as needed.



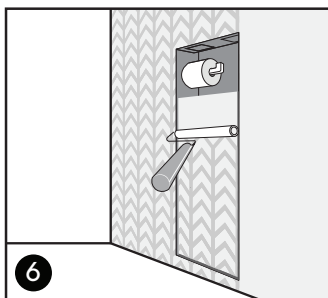
3 Tape and mud drywall compound to cover flange. Allow to dry. Sand and repeat as needed.



4 Hover door panel parallel to base until clips are aligned. Drop-in to engage.



5 Position inner garbage bin to your liking. Hide your other bathroom-y stuff.



6 Paint or wallpaper to customize. Install toilet paper holder.

Additional Support

support@ariavent.com / www.ariavent.com

Patent Information

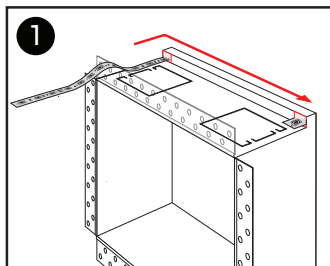
www.ariavent.com/pages/patents



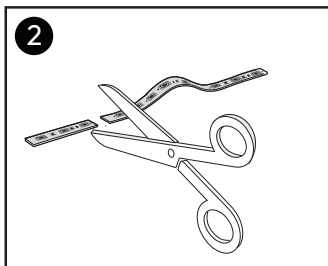
Made in Canada

Note

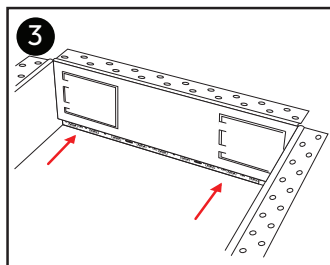
- LED light strip must be integrated prior to installation.



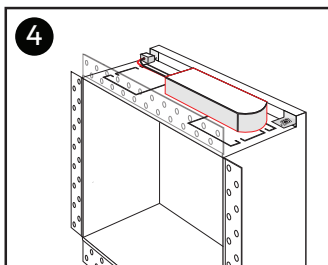
Line LED light strip along the inner top channel. Strip should not exceed channel width of $\frac{1}{2}$ inch.



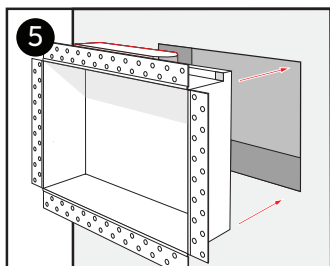
Cut LED light strip length to size.



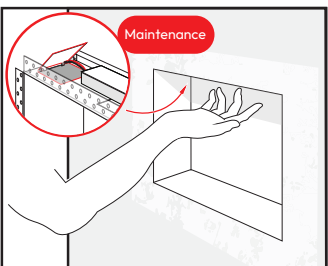
Use adhesive to secure the LED strip to the roof of the channel.



Connect the solderless clamp to the LED Strip, and attach the converter.



Lay the converter along the top support. Dryfit and connect power.



Maintenance post installation can be done through the concealed hinge doors.

Additional Support

support@ariavent.com / www.ariavent.com

Patent Information

www.ariavent.com/pages/patents



Made in Canada