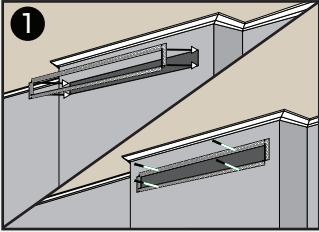
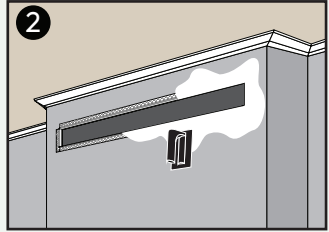


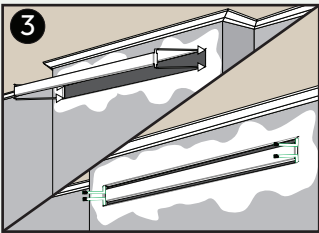
A - Drywall



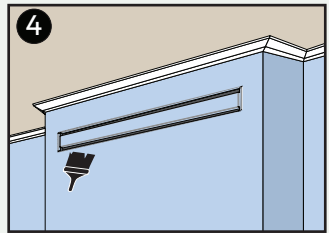
1 Cut hole in drywall according to **Vent Cover** size. Insert **Body** into cavity. Add **screws** in bead until secure.



2 Use drywall compound mud to cover flange surface. Once dry, sand. Repeat as needed.

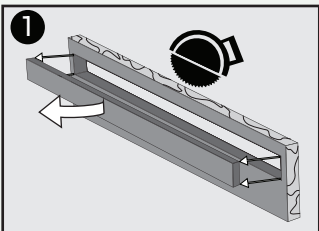


3 Insert **Tray** with solid face forward. Secure in all four corners using included button-head **screws**.

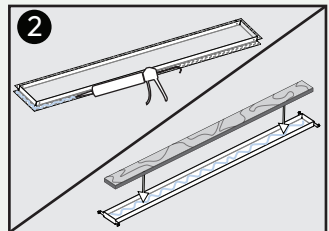


4 Paint to match wall colour.

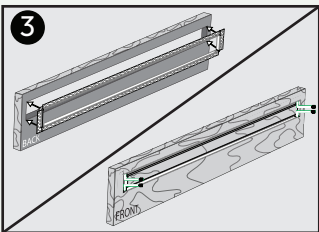
B - Shop



1 Cut hole in stone, tile, or millwork according to **Vent Cover** size. Set aside off-cuts.



2 Apply adhesive to back of flange surface, as well as the inside of the **Tray**. Insert off-cuts from **Step 1** into **Tray**.



3 Insert **Body** on rear of the hole from **Step 1**. Install **Tray** and secure four corners using included **screws**.

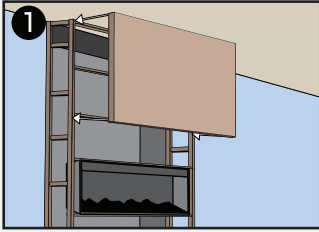


4 Install stone, tile, or millwork on-site and enjoy!

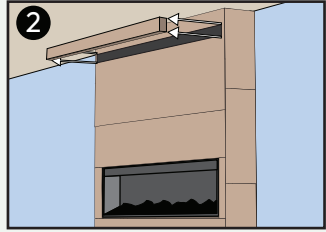
See reverse for more installation methods

Visit www.fittes.com for more information

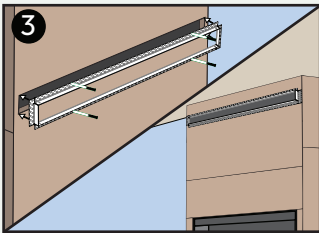
C - On-Site Cladding



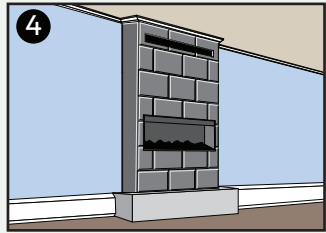
1 Install cladding material to fireplace frame on-site.



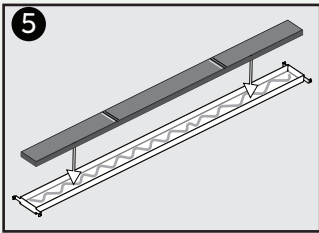
2 Cut hole in cladding according to **Fireplace Vent Cover** size.



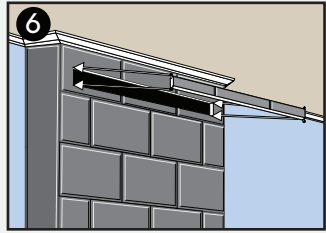
3 Secure front face of **Tray** to cladding using **screws**.



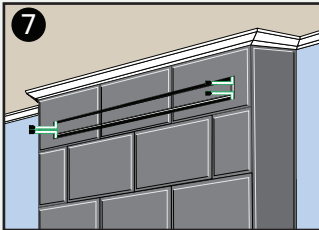
4 Apply stone, tile, or millwork to cladding on-site.



5 Apply adhesive to **Tray** and insert matching material.



6 Dry-fit **Tray** into Cavity



7 Install **Tray** and secure four corners using included button-head **screws**.



8 Enjoy!

See reverse for more installation methods

Visit www.fittes.com for more information

support@fittes.com