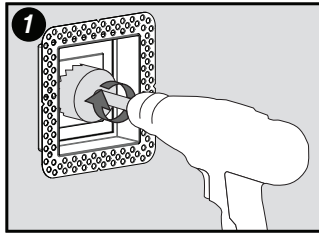


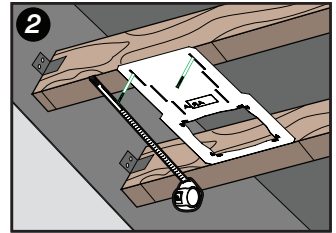
ARIA

Flush Device Mount Pot Light Installation

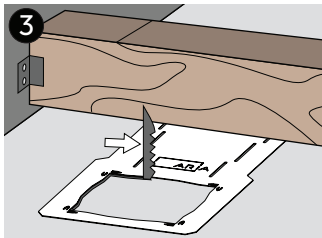
Visit www.ariavent.com for more information



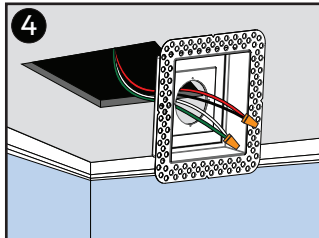
1 Drill hole in **Mount** according to the dimensions of the pot-light being used.



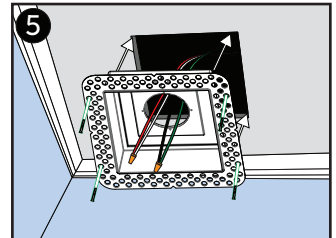
2 Secure **Smash Plate** using using nails or **wood screws**.



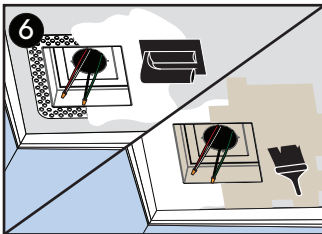
3 Once drywall is installed, use the **Smash Plate** as a guide to cut a hole.



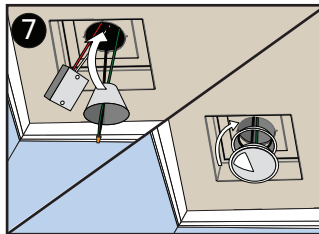
4 Disconnect power and feed wires through ceiling and **Mount**.



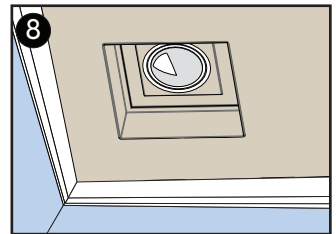
5 Secure **Mount** using staples or drywall screws.



6 Use drywall compound mud to cover flange. Once dry, sand. Repeat as needed. Paint to match surface.



7 Connect wires and place components through hole. Individual pot-light install may vary.



8 Enjoy!