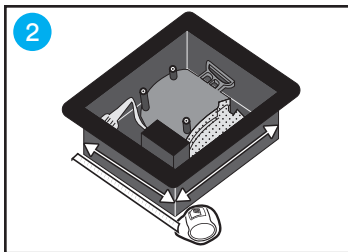
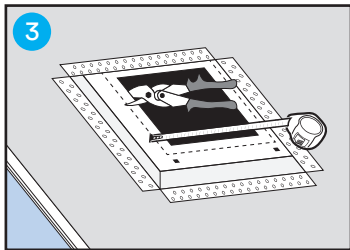


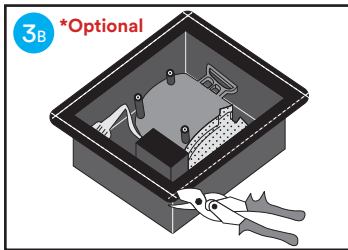
1 Slide to remove plate. Mount body in ceiling cavity. Use screws to fasten as needed.



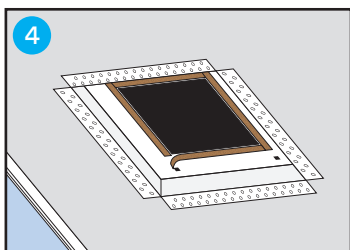
2 Measure base of ventilation fan to check if adjustments need to be made to Drywall Pro X opening.



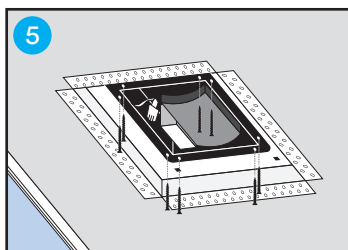
3 Measure body. If adjustment is necessary, cut along perforated edges according to sizes in step #2.



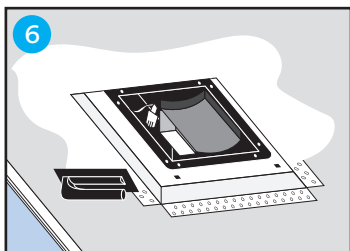
3B **\*Optional**  
\*Some fan flanges can obstruct tabs when sliding the cover plate.  
Slide in cover plate (step #8). If the fan flange is obstructing the tabs, remove fan & cut flanges.



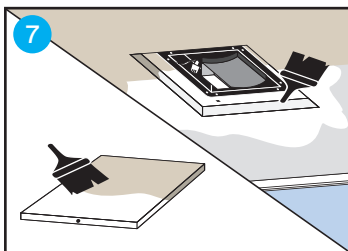
4 Peel and stick provided cork strips along the edges of the opening.  
\*Depending on opening size, you may need to cut the length of the cork strips.



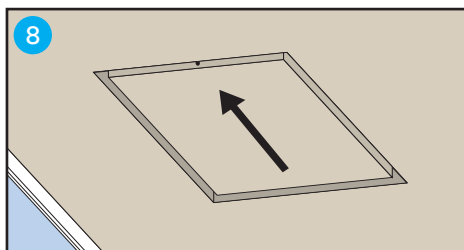
5 Insert and fasten fan with screws.  
\*Cork strips should be sandwiched between the fan and body piece.



6 Use mud to cover flange surface. Wait to dry. Sand the mud Repeat as needed.



7 Paint inside of the body and plate to match ceiling colour.  
\*Do not paint fan.



8 Insert and slide cover plate in place.  
\*Use the hole on the side of the plate as a guide.

### Additional Support

support@ariavent.com / www.ariavent.com