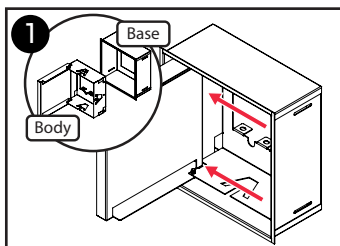
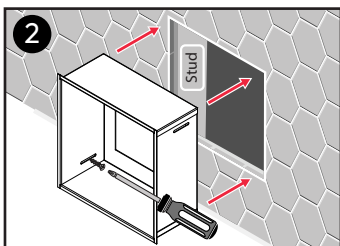


## Materials Needed

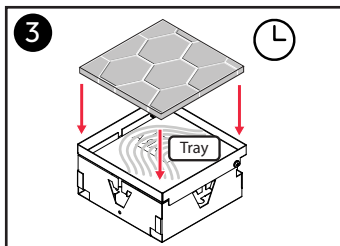
- Pre-cut piece of surface material for Tray insert.  
\*Size will vary depending on model.
- Bonding material (will vary depending on surface material)
- 4x self tapping screws



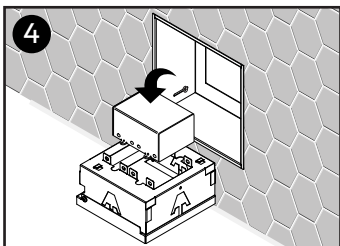
Disengage **Body** from **Base** by pushing firmly towards the hinged walls' innermost corner with the **Door** ajar.



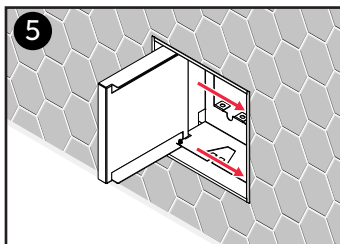
Dry fit **Base** into wall. Fasten **Base** to stud using provided pilot holes as necessary.



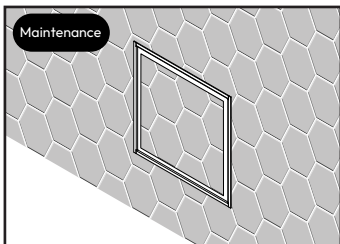
Apply silicone in **Tray**. Set pre-cut **Tray** insert into place. Allow time to cure.



Using the screws in the utility box, fasten the utility box to the rear of **Body** component.



Re-engage **Body** by aligning latches and pushing firmly towards the inner corners opposite of the hinged **Door**.



To hardwire electrical, have an electrician repeat steps #1 & #5 to access utility box.

\*NOTE\* To easily open the **Door**, simply press the side that has hinges. The **Door** will pop open!

## Additional Support

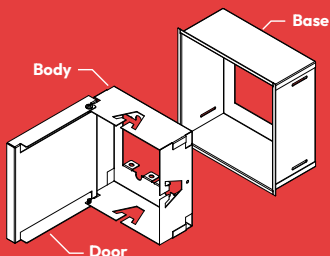
[support@fittes.com](mailto:support@fittes.com) / [www.fittes.com](http://www.fittes.com)

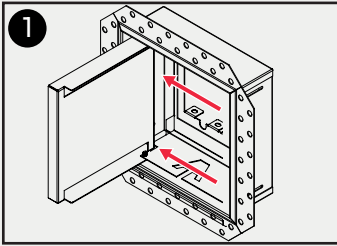
## Patent Information

[www.fittes.com/pages/patents](http://www.fittes.com/pages/patents)

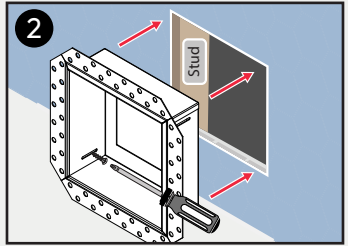


Made in Canada

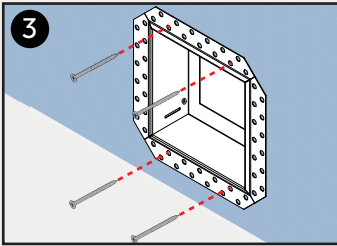




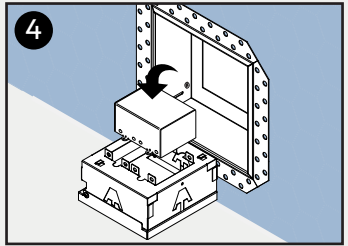
Disengage **Body** from **Base** by pushing firmly towards the hinged walls' innermost corner with the **Door** ajar.



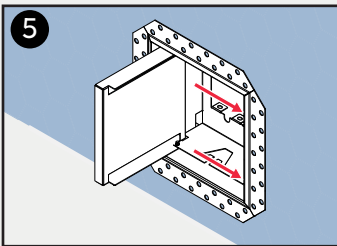
Dry fit **Base** into wall. Fasten **Base** to stud using provided pilot holes as necessary.



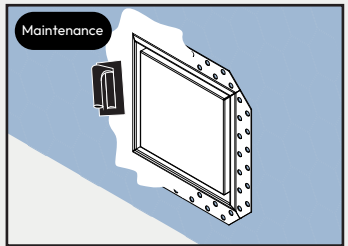
Ensure flange is flat to the wall. Use drywall screws to fasten.



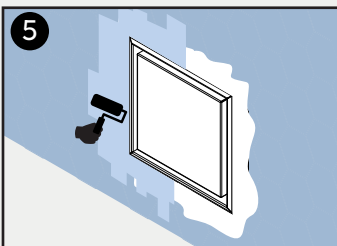
Using the screws in the utility box, fasten the utility box to the rear of **Body** component.



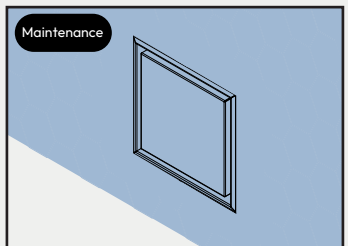
Re-engage **Body** by aligning latches and pushing firmly towards the inner corners opposite of the hinged **Door**.



Use mud to cover flange surface. Wait to dry, then sand. Repeat as needed.



Paint to match wall colour. If using wallpaper, do not cover **Body**.



To hardwire electrical, have an electrician repeat steps #1 & #5 to access utility box.

\*NOTE\* To easily open the **Door**, simply press the side that has hinges. The **Door** will pop open!

### Additional Support

support@fittes.com / www.fittes.com

### Patent Information

www.fittes.com/pages/patents



Made in Canada

