



ARIA



2019 Catalogue

Our Innovation

We make seriously beautiful air vents.
They're minimal, simple and adaptable.

We invented the first modular air registers that can be used anywhere with literally any material. Our vents provide a stylish alternative to the traditional (some may say *ugly* grille vents).

Founded with DIY and industry pros in mind, we strive to invent high quality products that compliment design and function.

Our mission is to create thoughtful, innovative design products that are beautiful, functional and bad ass.

Social



@ariavent

Contact

support@ariavent.com

ariavent.com

How We Got Here

Founded in September of 2016, Aria Vent Inc. is owned and operated by a father / daughter duo, Paolo and Roberta Mantenuto, who are passionate about innovative, thoughtful design.

The idea began after Paolo noticed that there had been many advancements in interior design, but one mechanical component had been left behind.

The air register, found in every room of a home, had not evolved with modular, minimalist design trends. As a lifelong inventor, Paolo was up for the challenge. After over 100 failed designs, a short-lived air vent / humidifier idea and aluminum foil prototypes, Aria Vent was born.

Today our patented products are proudly manufactured in Canada. We sell online and in over 200 retailers across US and Canada.



“For me, inventing is chasing the unknown. Failure is an absolutely necessary (and exciting) part of the process - it means I’m getting closer.” - Paolo Mantenuto, Inventor of Aria Vent.

Seriously Beautiful Air Vents	7
	13
	21
	27
	35
	37

Contents

OG COLLECTION

The original "OG" - made to offer design aficionados a sleek, modern air register.

ARIA LITE

The price-conscious alternative to the OG Collection. Same look, made in high-grade plastic.

FLUSHMOUNT PRO

Our most minimal floor vent - completely flush, with no rim. Made for the neat-freak, modern / minimalist perfectionists of the world.

DRYWALL PRO

Form and function can be seamlessly integrated. A virtually invisible option that blends vents right into wall and ceiling surfaces.

WHAT'S NEW

We are always inventing and improving. Our most recent innovation, the Drywall Pro X - ventilation fan cover. The new essential for every bathroom reno.

SPECS

The nitty gritty. Details and specifications for all our products.

Left: The perfect minimal kitchen space, Flushmount Pro, Designed by: Avenue Design Inc. (@avenuedesigninc) , Photograph by: Aia Photo Video (@aiaphotovideo) , April 2019 - Oakville, Ontario. Right: Wine cellar, Flushmount Pro, Designed by: Avenue Design Inc. (@avenuedesigninc) , Photograph by: Aia Photo Video (@aiaphotovideo) , April 2019 - Oakville, Ontario





ARIA OG

The original “OG” Aria Vent was made to offer design aficionados a sleek, modern air register.

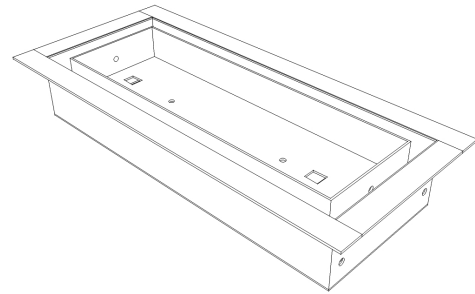
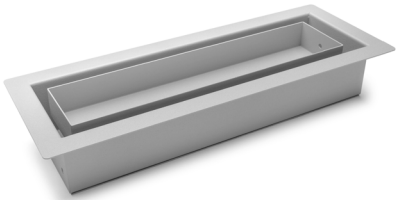
Ugly vents keep you up at night? No worries, we’ve got you covered.





Left / Right: An ode to neutral colour palettes, OG Collection, Designed by: Property Brothers, HGTV Property Brothers -
Buying and Selling, April 2019 - Calgary, Alberta

Collection - OG Collection



The OG Factor

The first vent we ever invented. Rightfully named "OG" for Original Gangster. If you think vents can't be gangster, than you've probably never seen the Aria Vent OG.

Our simple design has completely revolutionized the way you see vents. The OG is a quick and easy way to give an old vent a fresh new look.



Above: Natural hardwood in rustic Canadian cottage country home, OG Collection, Photo by: Aria Vent Inc., May 2018 - Muskoka, Ontario



Above: Dark hardwood floor, OG Collection, Design by: Property Brothers, HGTV Property Brothers, February 2019 - Calgary, Alberta

Applications

- Retrofit into existing surfaces.
- For supply air registers found on floors, walls and ceilings.
- Customize with any material; tile, hardwood, vinyl, carpet, laminate etc.

Features

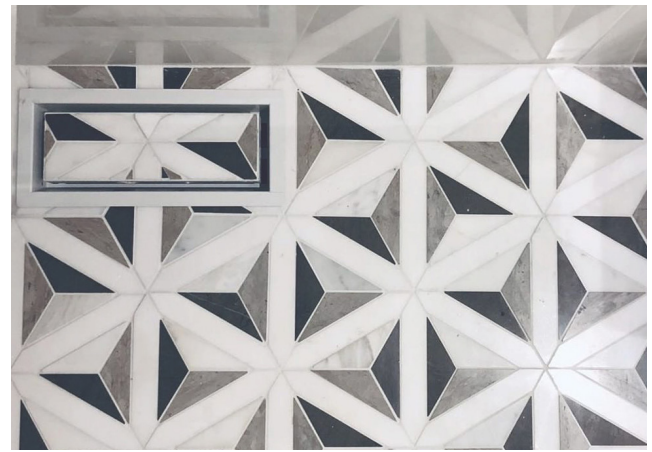
- **Air Flow:** Full air flow control. Slide tray to access dampers.
- **Child & Pet Proof:** Aria Vents are designed to catch items that kids can drop down the ducts. They're also flat with no crevices for pet tags to get caught in.
- **Easy Cleaning:** Slide and remove tray for easy duct, and every-day cleaning.

Size & Colour Guide

	Matte Black	Matte Grey	Appliance White
3" x 10"	●	●	●
4" x 10"	●	●	●
4" x 12"	●	○	○
4" x 14"	●	○	○
6" x 10"	●	○	○
6" x 12"	●	○	○



Above: All white staturario marble master bath, OG Collection, Designed by: Koda Interiors (@koda.interiors) , November 2018 - Ottawa, Ontario



Above: Geometric tiles, OG collection, Photo by: Ancora Stone Tile Design, January 2019 - Waukesha, WI

Intentionally Minimalist

Minimalism is an art movement that began post WW2. Beginning in the late 1960s and ongoing today, this new expression of stripping to bare essentials has trickled into every aspect of culture - music, architecture, fashion and even lifestyles.

The essence of minimalism is intentionality. It is marked by extreme simplicity of form and a literal, objective approach. In a world of distractions, consumerism and excess, the appeal of minimalism is a way to create clarity - something we crave now, more than ever.

Interior design and architecture have been leaders in the minimalism movement. Their focus is to improve the human experience of spaces to combat the extra stresses of modern life.

Part of this transformation includes concealing mechanical components of homes (outlets, lights, vents etc.). Shifting the focus towards tactile, beautiful elements like natural materials, soft fabrics, and thoughtful colour palettes. Minimalist spaces appear fluid and effortless - concealing the functional mechanics, intentionally redirecting our focus.



Above: Elegant bright seating room with white-washed oak floors, OG Collection, Design by: Property Brothers, HGTV Property Brothers - Buying and Selling, April 2019 - Calgary, Alberta

ARIA LITE

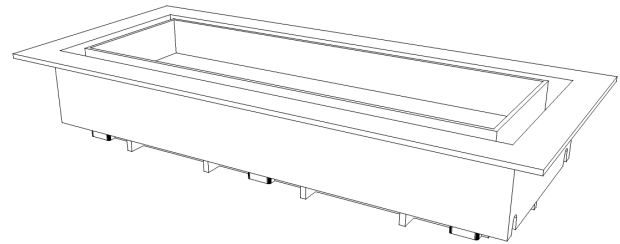
We made the Aria Lite to make good design accessible. Same look as the OG, but at a price that your budget will love. The Aria Lite is a fast-reno dream - inexpensive, quick to install, and she looks pretty freaking good.



Left: Clean modern kitchen with vent in the kick plate, Aria Lite, Project by: Robert Cripps Construction Inc. (@robertcrippsconstruction) , May 2019 - Whitby, Ontario
Right: Modern bedroom with warm hardwood, Aria Lite, Design by: Karla Schaus (@karla.schaus) , November 2018 - Collingwood, Ontario



Collection - Aria Lite



Lite But Mighty

Good looking vents don't have to be expensive. That's why we made the Aria Lite.

Don't let the plastic composition fool you - this is our strongest model. It can withstand heavy foot traffic. Graded for commercial spaces and can hold more than 300 lbs.

She's budget friendly, good looking and strong! What more could you ask for?

Left: Black and white foyer, Aria Lite, Design by: Karla Schaus (@karla.schaus), November 2018 - Collingwood, Ontario / Right: efficient laundry room with penny tile, Aria Lite, Design by: Lucyshyn Designs (@lucyshyn.designs), November 2018 - Grassie, Ontario



Applications

- Retrofit into existing surfaces.
- For supply air registers found on floors, walls and ceilings.
- Customize with any material; tile, hardwood, vinyl, carpet, laminate etc.

Features

- **Child & Pet Proof:** Aria Vents are designed to catch items that kids can drop down the ducts. They're also flat with no crevices for pet tags to get caught in.
- **Easy Cleaning:** Slide and remove tray for easy duct, and every-day cleaning.
- **Air Flow:** This model features a fixed air flow design. Vent always remains open.

Size & Colour Guide

	Matte Black	Matte Grey	Cotton White
3" x 10"	●	○	●
4" x 10"	●	○	●
4" x 12"	○	○	○
4" x 14"	○	○	○
6" x 10"	○	○	○
6" x 12"	○	○	○



Above: Transitional living room, Aria Lite, Design by: Montana Labelle Design (@montanalabelle) , March 2019 - Toronto, Ontario.



Made in Canada

There is more to Canada than overly kind people and maple syrup. Canada's identity is influenced by the diverse cultures of its people. So, pin-pointing a clear Canadian Design essence can be challenging.

For our family, Canada represents progress and possibility.

We put "Made in Canada" on every vent because, well, they're literally made in Canada. But we also do it because we believe Aria Lite is a byproduct of the Canadian opportunity and culture. Made with the forward-thinking, collaborative Canadian spirit.

We consider Canadian Design just that - diverse, full of possibility, and quality people making quality things.



Left / Right: Herringbone matte black tile with matte black hardware features, Aria Lite, Design by: Montana Labelle Design (@montanalabelle), March 2019 - Toronto, Ontario.

FLUSHMOUNT

DRYWALL

PRO SERIES

PRŌ

The definition of a pro starts with the integrity and passion. They are the architects, designers and skilled craftspeople that lead the industry by setting the highest standards. They strive to redefine the limits in every project they take on.

They see challenge as opportunity. They are constantly learning, improving and leading by example.

These are the people who inspired the Pro Series. They asked us to push our limits, and now we are giving them the products to push theirs.

Installation of the Pro Series products should not be attempted by a DIYer. Unless you're a ridiculously good DIYer. In which case - you go Glen Coco!

PRO SERIES

FLUSH PRO

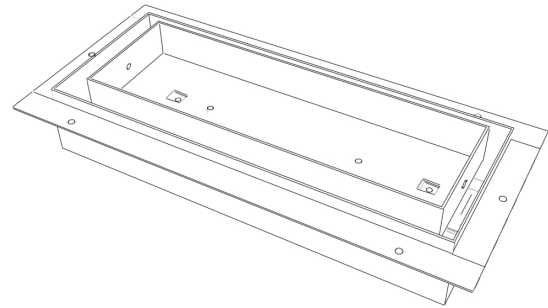
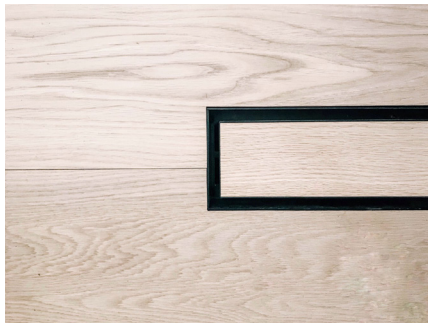
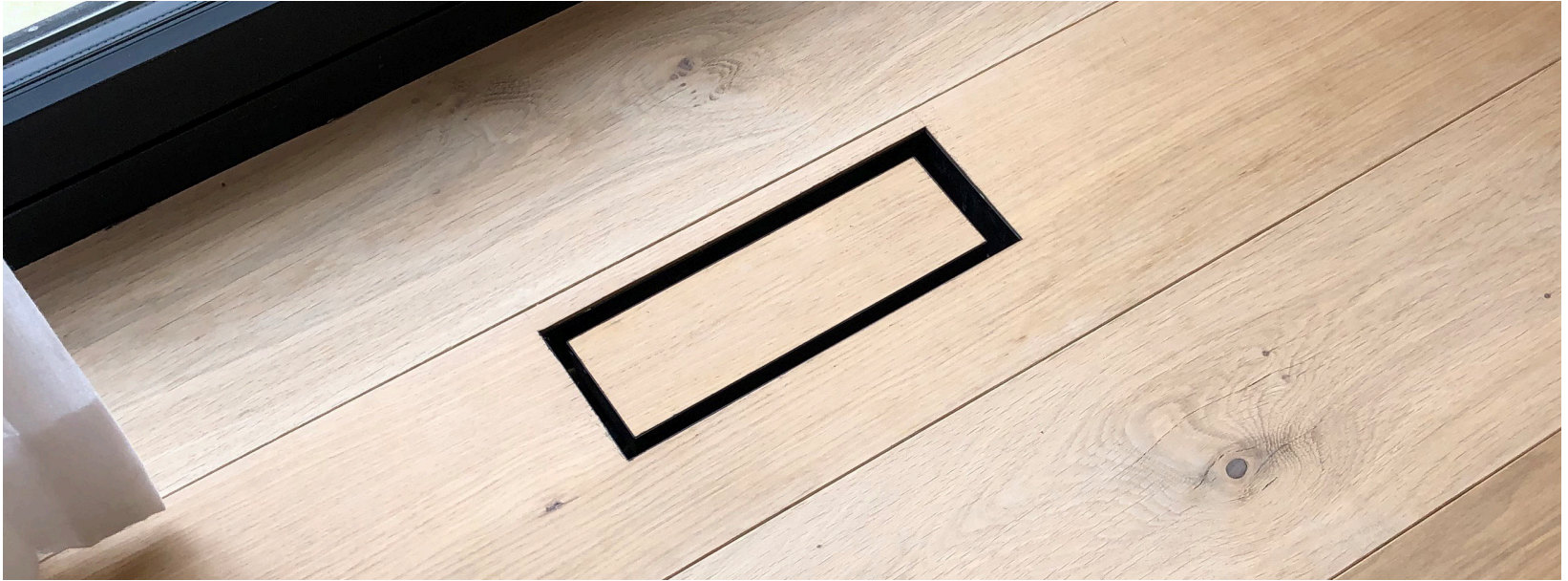
Neat-freak, perfectionists - we got you. The Flushmount Pro is our rimless, flush vent. The only thing you will see is the surface material and a small trough surrounding it. We were inspired by the Industry Pros who take their craft to another level... so we did too!



Left: Bright foyer, Flushmount Pro, Designed by: Avenue Design Inc. (@avenuedesigninc), Photograph by: Aia Photo Video (@aiaphotovideo), April 2019 - Oakville, Ontario / Right: Sophisticated piano room, Flushmount Pro, Designed by: Monokrom Design (@monokrom_design), April 2019 - Vancouver, BC



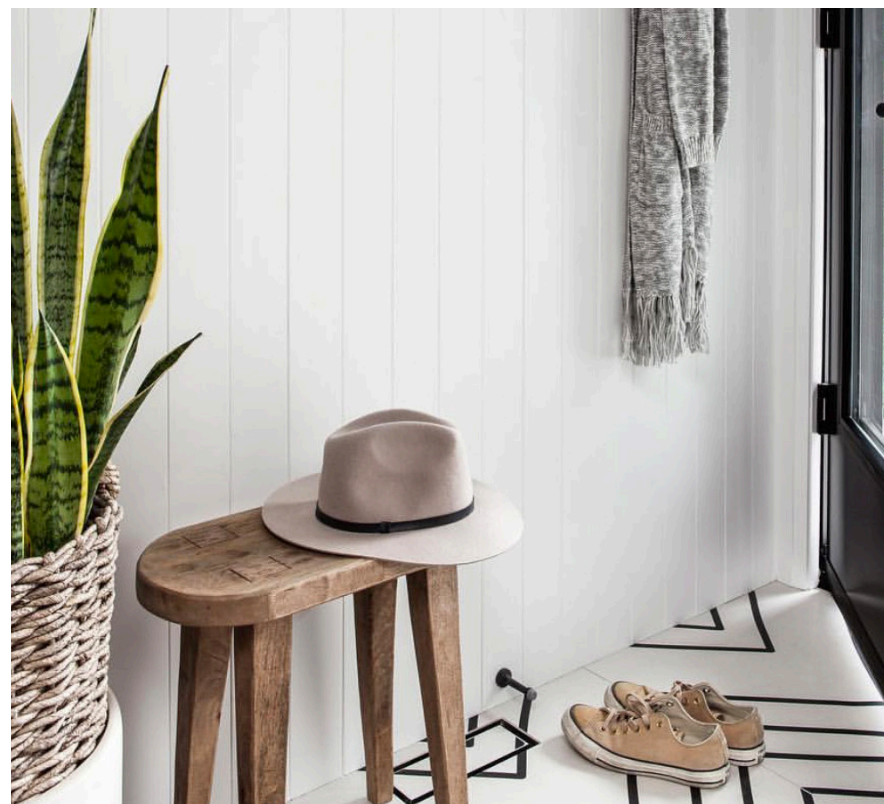
Pro Series - Flushmount PRO



PRO x Pros

After launching the OG Collection, some industry Pros asked us to make an even-more seamless air vent option with no rim. Our response - the Flushmount Pro.

This has become our best selling floor vent model. It is an ultra minimal, virtually invisible air vent that has become a standard for Pros who know what's up.



Above: Trendy foyer, Flushmount Pro, Designed by: Collective Studio (@collective.studio_), September 2018 - Toronto, Ontario



Above: Contemporary art, Flushmount Pro, Designed by: Avenue Design Inc. (@avenuedesigninc), Photograph by: Aia Photo Video (@aiaphotovideo), April 2019 - Oakville, Ontario

Applications

- Must be installed at the sub-floor level, prior to flooring (or surface) installation.
- For supply air registers found on floors. Can also be used on walls and ceilings that have different surface materials (like tile or shiplap).
- Customize with any material; tile, hardwood, vinyl, carpet, laminate etc.

Features

- **Air Flow:** Full air flow control. Slide tray to access dampers.
- **Child & Pet Proof:** Aria Vents are designed to catch items that kids can drop down the ducts. They're also flat with no crevices for pet tags to get caught in.
- **Easy Cleaning:** Slide and remove tray for easy duct, and every-day cleaning.

Size & Colour Guide

	Matte Black	Matte Grey	Appliance White
3" x 10"	●	○	○
4" x 10"	●	○	○
4" x 12"	●	○	○
4" x 14"	●	○	○
6" x 10"	●	○	○
6" x 12"	●	○	○

Left: Hardwood floors, Flushmount Pro, Designed by: The Reno Twins (@the_reno_twins) , June 2018 - Oshawa, Ontario
Right: Wide plank modern hardwood, Flushmount Pro, Designed by: Montana Labelle Design (@montanalabelle) , December 2018 - Toronto, Ontario





DRYWALL PRO

This is the vent everyone is talking about. We made a seamless option for wall and ceiling vents. Elevate the clean-line aesthetic with uninterrupted wall surfaces.

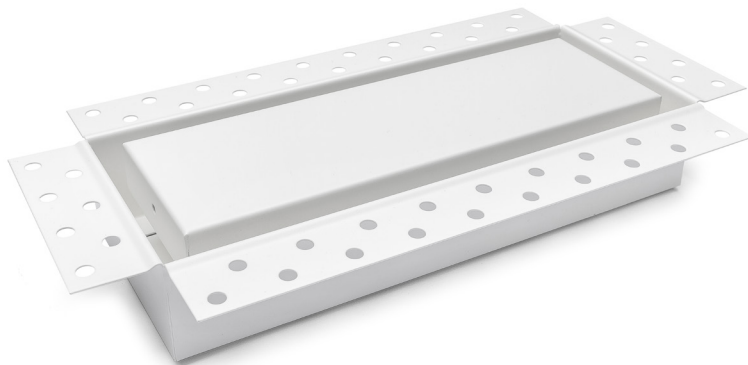
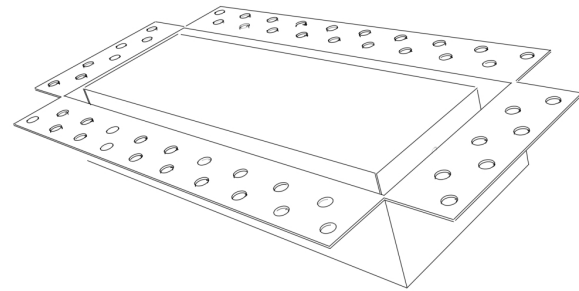


Left: Simple white ceiling, Drywall Pro, Project by: Crossgrain, LLC. (@crossgrain327) , May 2019 - Saint Louis, MO

Right: Black and white modern staircase, Drywall Pro, Designed by: Montana Labelle Design (@montanalabelle) , December 2018 - Toronto, Ontario



Pro Series - Drywall PRO [supply vent]



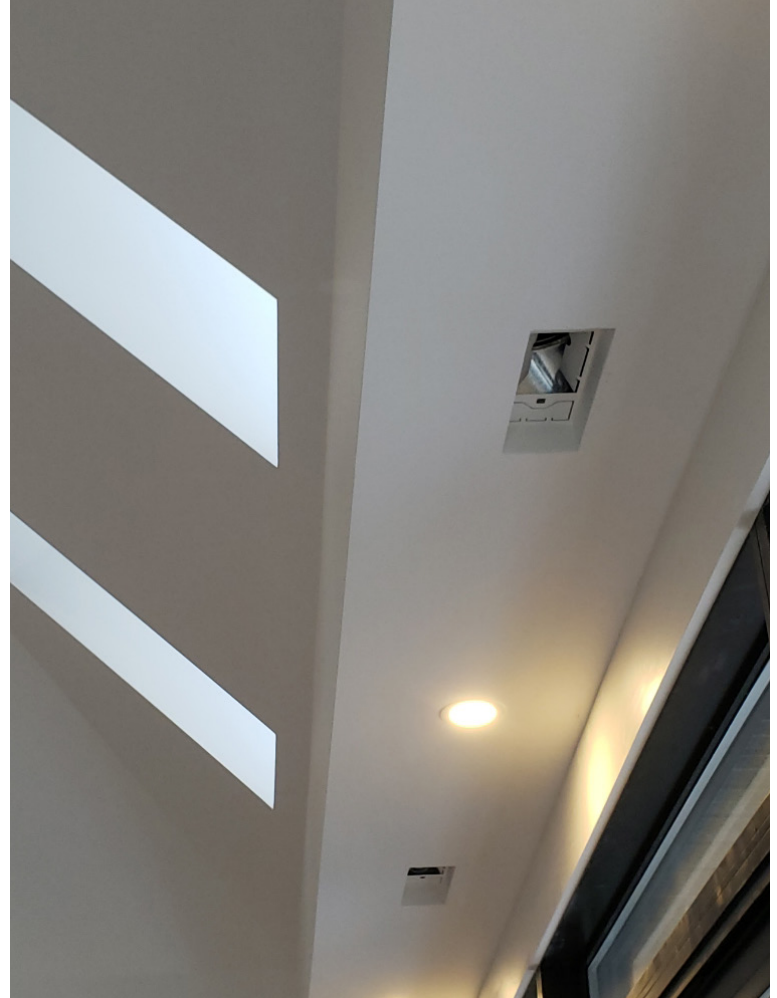
New Standard

Drywall Pro is designed specifically for wall and ceiling supply air registers on gypsum / drywall surfaces.

Complete with a drywall bead rim, this vent gets mudded right into the drywall surface. Just paint or cover with wallpaper to finish. This model is quickly becoming the new standard for wall and ceiling vents.



Above: Reclaimed barnwood feature wall, Drywall Pro, Project by: Benjamin Marchand, October 2018 - Montreal, Quebec



Above: Skylight ceiling and underside of Drywall Pro, Drywall Pro, Photo by: Aria Vent Inc., March 2019 - Toronto, Ontario

Applications

- Requires professional installation.
- For supply air registers found on walls and ceilings. Specifically for drywall surfaces.
- Customize inner plate. Can be painted or finished with wallpaper.

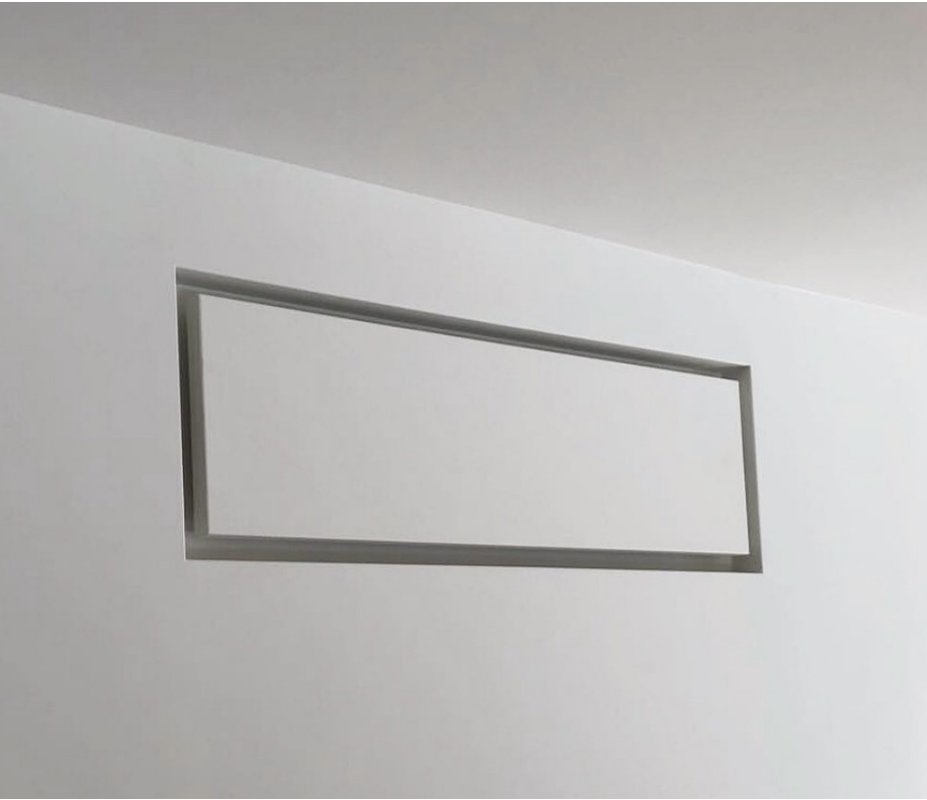
Features

- **Air Flow:** Full air flow control. Slide plate to access dampers.
- **Easy Cleaning:** Slide and remove tray for easy duct, and every-day cleaning.

Size & Colour Guide

	Matte Black	Matte Grey	Satin White
3" x 10"	<input type="radio"/>	<input type="radio"/>	<input type="radio"/>
4" x 10"	<input type="radio"/>	<input type="radio"/>	<input checked="" type="radio"/>
4" x 12"	<input type="radio"/>	<input type="radio"/>	<input checked="" type="radio"/>
4" x 14"	<input type="radio"/>	<input type="radio"/>	<input type="radio"/>
6" x 10"	<input type="radio"/>	<input type="radio"/>	<input checked="" type="radio"/>
6" x 12"	<input type="radio"/>	<input type="radio"/>	<input type="radio"/>

Pro Series - Drywall PRO [air return]



Above: Air return on wall, Drywall Pro Air Return, Project by: Murdock Construction (@murdockconstruction), January 2019 - Ottawa, Ontario



Above: Underside of air return, Drywall Pro Air Return, Project by: Jack and Greg Renovations, January 2019 - Toronto, Ontario



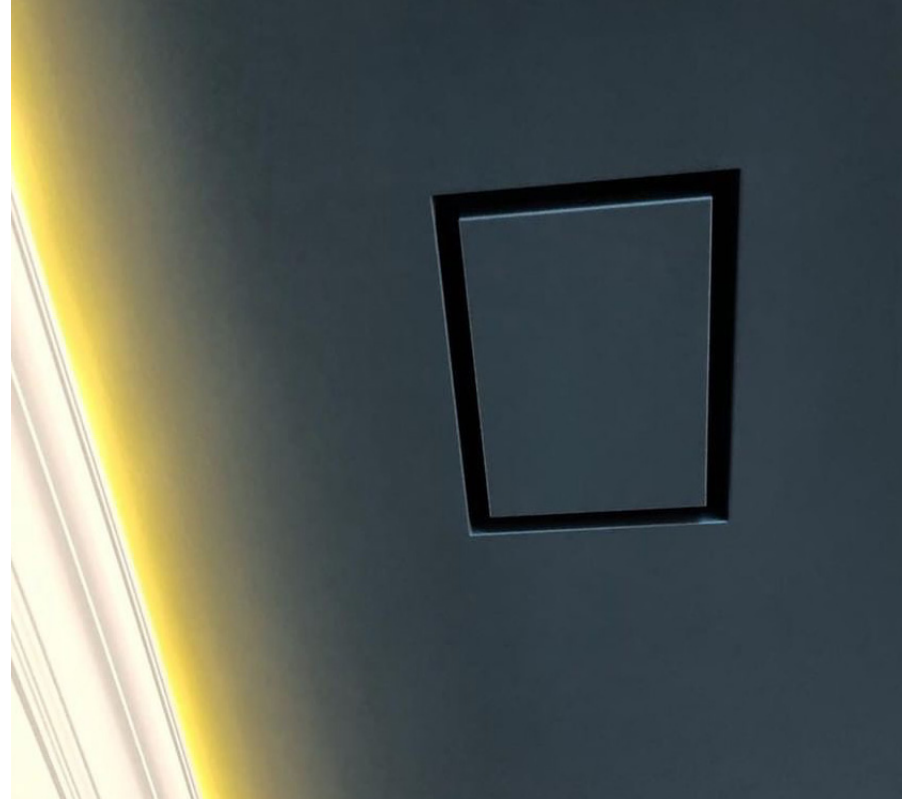
Pro-blem Solving

An extension of the Drywall Pro collection, our air returns give you the same sleek look as the Drywall Pro but in larger sizes. Specifically for cold air returns.

Air returns are always in the most noticeable places; living areas, hallways and foyers. They can be a total eyesore. We made a solution, so you don't have to make ugly compromises.



Above: Feature art wall, Drywall Pro Air Return, Project by: Murdock Construction (@murdockconstruction), January 2019 - Ottawa, Ontario



Above: Ceiling air return, Drywall Pro Air Return, Project by: Feeney and Co (@feeneyandco), February 2019 - Allentown, PA

Applications

- Requires professional installation.
- For air returns found on walls and ceilings. Specifically for drywall surfaces.
- Customize inner plate. Can be painted or finished with wallpaper.

Features

- **Air Flow:** Full air flow control. Slide tray to access dampers.
- **Easy Cleaning:** Slide and remove tray for easy duct, and every-day cleaning.
- **Air Filters:** this model does not currently have space for air filters. *This is something we're working on.

Size & Colour Guide

	Matte Black	Matte Grey	Satin White
10" x 14 1/4"	<input type="radio"/>	<input type="radio"/>	<input checked="" type="radio"/>
10" x 30 1/4"	<input type="radio"/>	<input type="radio"/>	<input checked="" type="radio"/>
14" x 14"***	<input type="radio"/>	<input type="radio"/>	<input checked="" type="radio"/>

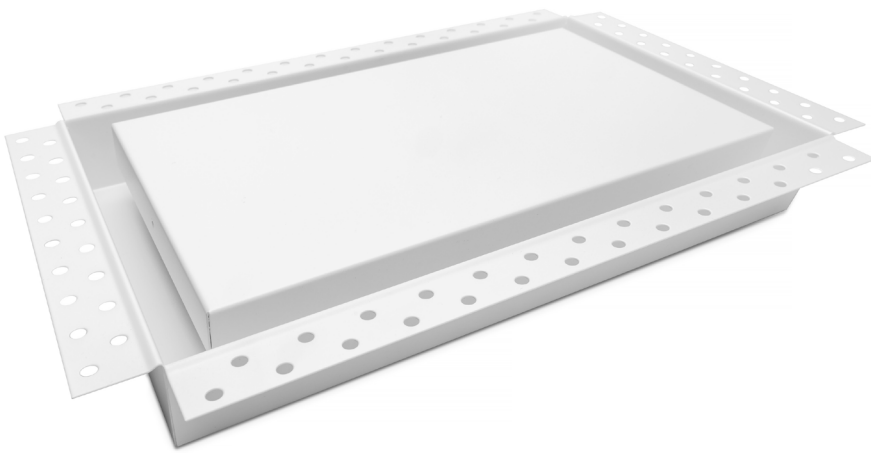
**Drywall Pro X model - can also be used as an air return.



Left: Fresh living space, Drywall Pro Air Return, Project by: Murdock Construction (@murdockconstruction), January 2019 - Ottawa, Ontario
Right: Minimalist living space, Drywall Pro Air Return, Project by: Simpson Properties (@simpsonproperties), May 2019 - Toronto, Ontario



What's New - Drywall Pro X [exhaust fan]

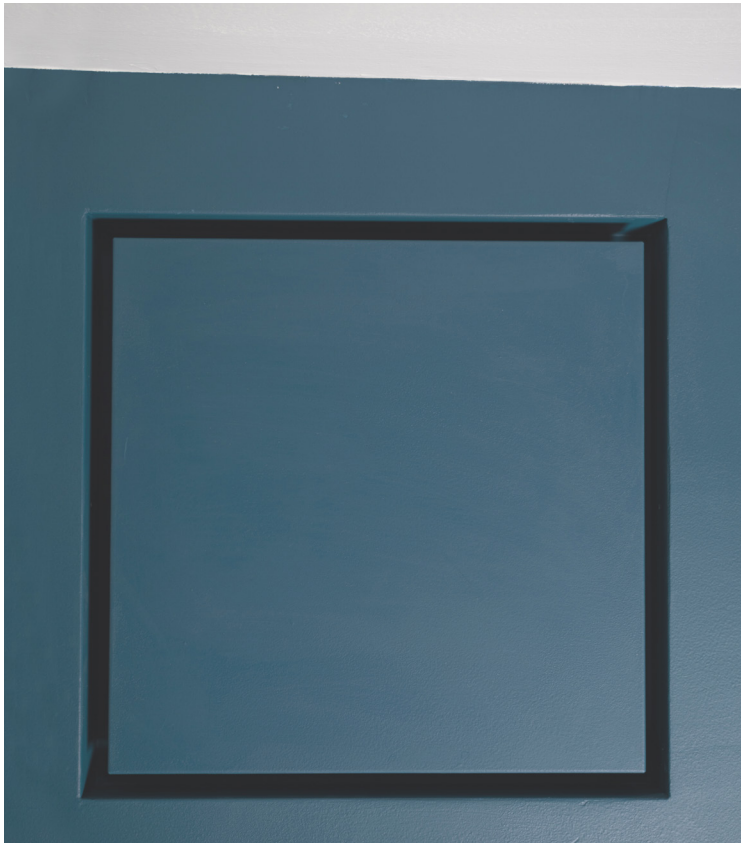


The X Factor

This is the end to ugly exhaust fans getting in the way of your bathroom feng shui. Like our other Drywall Pro models, this guy has a drywall bead rim that gets mounted and mudded right into the drywall surface.

The Drywall Pro X is designed for retrofit exhaust fans. This is only a cover, ventilation fans must be purchased separately. We made it to be compatible with specific exhaust fan models and sizes.

This is a big detail that packs a “wow!” Bye bye bulging, grille exhaust covers, it was nice knowing you. See ya never.



Above: bottom view of painted finish, installed Drywall Pro X. Center piece can be removed to access ventilation motor



Top: installation process - mudded base piece of the Drywall Pro X
Bottom: "before" view of cumbersome traditional exhaust fan cover



Applications

- For ceiling ventilation fans on drywall surfaces. Requires additional ventilation fan. This is only the fan cover.
- Customize inner plate. Can be painted or finished with wallpaper.

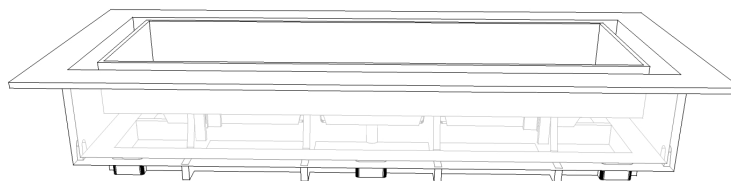
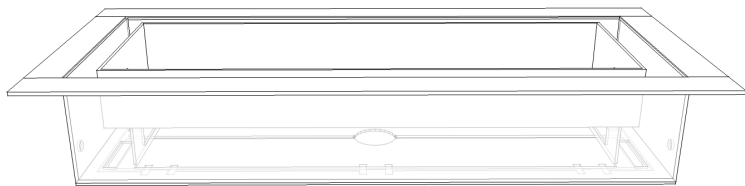
Features

- **Size:** Overall size is 14" x 14".
*Requires extra 1 3/4" space in ceiling cavity.
- **Noise:** Average 3 DB noise reduction.

Compatible Fans

- **Retrofit:** Only compatible with retrofit exhaust fans that require a drywall opening between 8" x 8" to 10 1/2" x 10 1/2"
- **Compatible Fan Models:**
Panasonic: WhisperCeiling™, WhisperFit®, WhisperGreen Select™
Broan-NuTone: Model EZ80NC

Specifications



OG COLLECTION

Applications:	Floor, wall, ceiling
Composition:	Powder coated solid steel
Adjust Air Flow:	Yes
Graded for high-traffic:	No
Material Thickness:	Min: N/A Max: 7/8"
Compatible Surfaces:	Wood, vinyl, laminate, tile, mosaic, MDF, carpet, etc.
When to Install:	Any time after surface is installed

Install Notes

This unit can be retrofitted and installed after the finished surface. Use your surface material to customize vent.

Components

Tray: Insert finished surface material. Can slide and remove to access air flow flanges.

Body: The outer shell of the vent that houses the tray. Flange located on bottom of body.

ARIA LITE

Applications:	Floor, wall, ceiling
Composition:	High quality ABS Plastic
Adjust Air Flow:	No
Graded for high-traffic:	Yes
Material Thickness:	Min: N/A Max: 3/4"
Compatible Surfaces:	Wood, vinyl, laminate, tile, mosaic, MDF, carpet, etc.
When to Install:	Any time after surface is installed

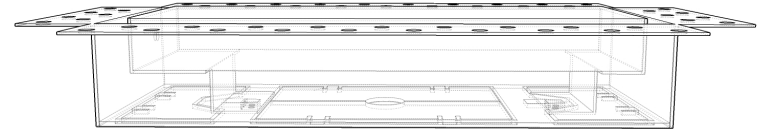
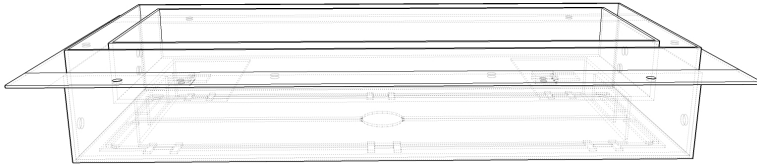
Install Notes

This unit can be retrofitted and installed after the finished surface. Use your surface material to customize vent.

Components

Tray: Insert finished surface material.

Body: The outer shell of the vent that houses the tray.



FLUSHMOUNT PRO

Applications:	Floor, wall, ceiling
Composition:	Powder coated solid steel
Adjust Air Flow:	Yes
Graded for high-traffic:	No
Material Thickness:	Min: 1/4" Max: 7/8"
Compatible Surfaces:	Wood, vinyl, laminate, tile, mosaic, MDF, carpet, etc.
When to Install:	Before surface is installed

Install Notes

This unit must be installed before flooring, at sub-floor level. Use your surface material to customize vent.

Components

Tray: Insert finished surface material. Can slide and remove to access air flow flanges.

Body: Adjustable to height of floor surface.

Base: Installed before surface material, at sub-floor level.

DRYWALL PRO [supply and air return vents]

Applications:	Wall, ceiling
Composition:	Powder coated solid steel
Adjust Air Flow:	Yes
Graded for high-traffic:	N/A
Material Thickness:	Min: N/A Max: N/A
Compatible Surfaces:	Drywall
When to Install:	Any time after drywall is installed

Install Notes

This unit can be retrofitted and installed after the finished surface. Use your surface material to customize vent.

Components

Tray: Powder coated surface to be finished with paint or wallpaper. Can slide and remove to access air flow flanges.

Body: Drywall bead edge to be fastened to surface and finished with drywall mud. Flange located on bottom of body.

ARIENT

[@ariavent](#)

support@ariavent

ariavent.com