

ARIA

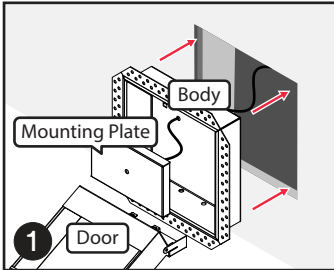
No-See Niche [Key Pad] Installation

Materials Needed

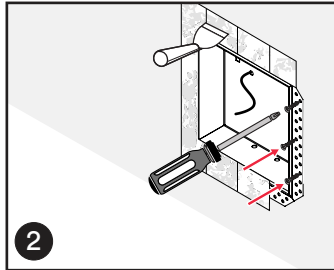
- Screws to mount Niche
- Drywall compound
- Sandpaper

Materials Included

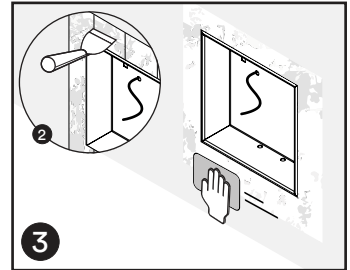
- No-See Niche
 - Components: Body, Door, Mounting Plate



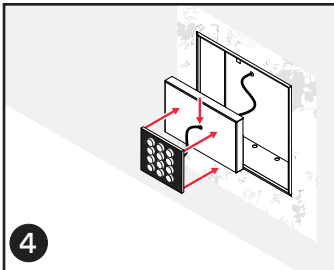
Remove Door and Mounting Plate. Dry fit Body into place. Ensure wiring is run through the hole.



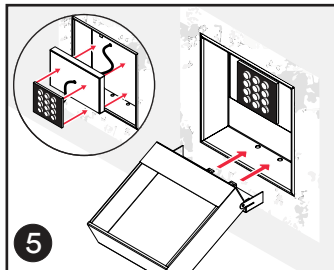
Fasten Body in place with screws. Mud and tape drywall compound to cover flange.



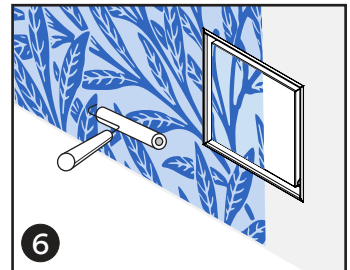
Once dry, sand mud until the surface transitions smoothly. Repeat steps 2 & 3 as needed.



Mount keypad to Mounting Plate, running wire through the hole in the Plate.



Slide Mounting Plate and Door back into place.



Customize the Niche and surrounding surface with paint/wallpaper.

Additional Support

support@ariavent.com / www.ariavent.com / [@ariavent](https://twitter.com/ariavent)

Patent information

www.ariavent.com/pages/patents