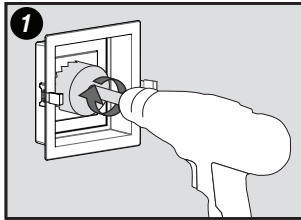


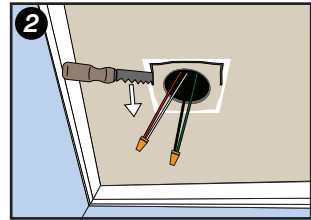
ARIA

**Device Mount [Frame]
Pot Light Installation**

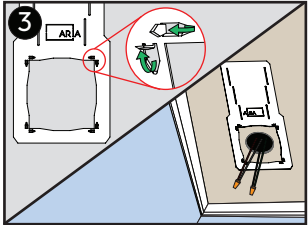
Visit www.ariavent.com for more information



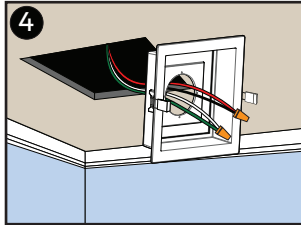
1 Drill hole in **Mount** sized according to dimensions of the pot-light being used.



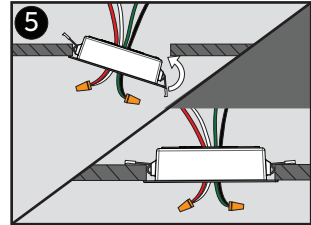
2 Using dotted line on instruction guide, cut hole to allow **Mount** to be inserted.



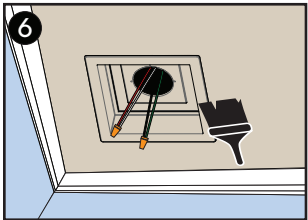
3 **Optional:** Use **Smash Plate** as guide. Secure to ceiling using pins as a stamp.



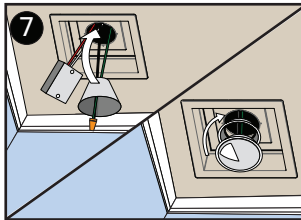
4 Disconnect power and feed wires through ceiling and **Mount**.



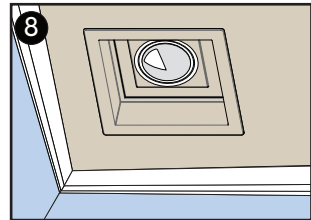
5 Squeeze spring clips through ceiling opening. Spring tension will secure the **Mount** in place.



6 Paint to match surface.



7 Connect wires and place components through hole. Individual pot light install may vary.



8 Enjoy!