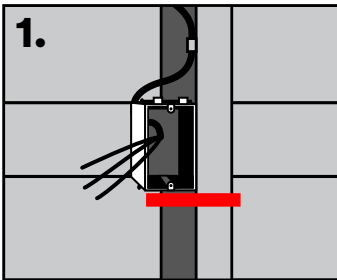
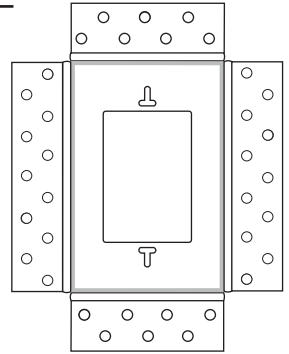
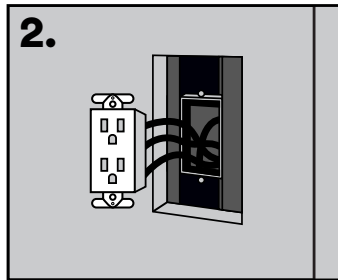


Drywall Receptacle Mount

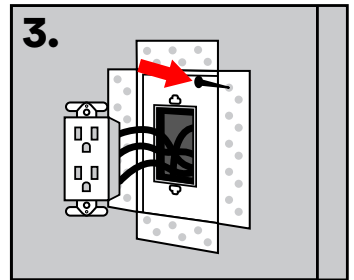
- Designed for light switches, outlets, ethernet and phone receptacles.
NOTE: instructions below illustrate the install of an outlet, install method is the same for all receptacle types
- Compatible with any screwless wall plate.
*Purchase wall plate separately. Recommended Brands: Leviton, Lutron, Eaton
- Some preparation to receptacle box is required (see step 1).
Best done prior to drywall installation.
*Requires professional drywall taping install



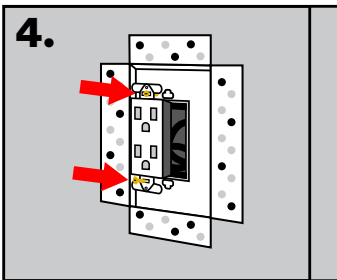
1. Ensure the receptacle box is installed flush to the studs.



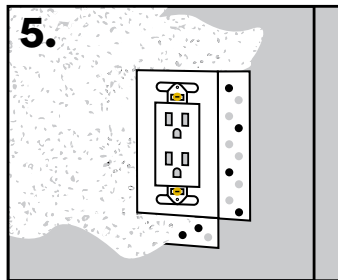
2. Cut opening in drywall to fit **Drywall Mount**.



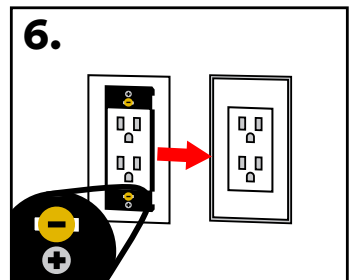
3. Ensure flange is flat to the wall. Use drywall screws to fasten as needed.



4. Fasten the outlet to the receptable box through the “T” shaped holes in the **Drywall Mount**.



5. Tape, mud to cover flange. Once dry, sand. Repeat as needed.



6. Fasten the screwless wall plate frame and snap on wall plate.

*Wall plate and wall plate frame not included.