

2022 - 2023

**POULTRY & MEAT
SCISSORS CATALOG**

EST.



1982

WOLFF

INDUSTRIES, INC.

WHAT IS ERGONOMIX®?	3	TWICE AS SHARP®	27
<i>PROCESSING SCISSORS AND SHEARS</i>		TWICE AS SHARP® ACCESSORIES	27
ERGO-TRACE® SHEARS	4	WEREWOLFF SHARPENER	28
WOLFF® STRAIGHT TRIMMERS	5	DUST COLLECTOR	29
WOLFF® BENT TRIMMERS	10	ROUND KNIFE SHARPENER	30
WOLFF® TENDER SHEARS	15	TRUHONE® KNIFE SHARPENER	31
WOLFF® SPECIALITY SHEARS	16	<i>TOOL TRACKING</i>	
KAI® ERGONOMIX®	17	WOLFF TRAX	32
KAI® SPECIALTY SHEARS	18	<i>SHARPNESS TESTING</i>	
WOLFF® UTILITY SHEARS	19	ANAGO® KNIFE TESTER	34
WOLFF® HIGH LEVERAGE	20	WOLFF® SCISSORS TESTER	35
<i>PROCESSING KNIVES</i>			
IVO® PROCESSING KNIVES	22		
DOUBLE BLADED TENDER KNIFE	26		
<i>SHARPENERS AND ACCESSORIES</i>			
ON-LINE SHARPENERS	26		

It's more than just a word!

Ergonomix® shears from *Wolff Industries, Inc.* are more comfortable, cut easier, stay sharper, last longer, and reduce medical losses. The term **Ergonomix®** has five distinct categories that shears have to meet in order to receive the branding. Currently only a selection of shears from **Wolff®** and **KAI®** have earned the badge.



1. HARDENED STAINLESS STEEL

Ergonomix® shears are made of a durable stainless steel, hardened to 54-58 Rockwell C. This gives our shears a life expectancy two to four times longer than of our competitors and significantly reduces your replacement costs.

2. PROPER BLADE TENSION

Ergonomix® shears open and close with less hand pressure because we have set the desired tension of the blade for optimal cutting.

3. MECHANICALLY SECURED PIVOTS

Ergonomix® shears have the pivot nuts mechanically locked in place with a nylon lock-nut to prevent loosening and falling off.

4. ERGONOMICALLY CORRECT HANDLES

Ergonomix® shears have ergonomically designed handles to help hold the operator's hand in the most natural position. The soft, thermoplastic elastomer handles help reduce stress and tension on the hand. Ergonomix® handles are also chemically bonded to be food safe and they will not break.

5. HONED & TESTED

Ergonomix® shears have both blades honed at 35° to create the easiest cutting and longest lasting edges. Our honed edges reduce hand pressure by approximately 40%. After honing, each pair are hand tested for desired cut and feel. Each pair of shears must meet 100% of our quality control standards.

WHAT IS ERGNOMIX®?



WOLFF® ERGO-TRACE® SHEARS

- Durable 420-HC stainless steel, apx. 58 HRC
- Professionally honed cutting edge
- Unique serial number for tool tracking
- Metal detectable handles
- Soft ergonomic thermal plastic handles
- Chemically bonded handles

ET194X

HANDLE SIZE: Large
HANDLE COLOR: Green
OVERALL: 9 5/8"
CUT: 4"
HAND: Right

HANDLE MATERIAL: Soft Sarlink® thermal plastic handles
STEEL: 420 high carbon stainless steel
NOTE: Blades honed at 35°



VARIANTS:
 Straight Trimmer
 ET194XB - with ball tip
 ET194XCL - blades curved left
 ET194XCR - blades curved right
 ET194X-Z - serrated blades

ORIGIN:
 Made in USA

ET194L

HANDLE SIZE: Large
HANDLE COLOR: Black
OVERALL: 9 5/8"
CUT: 4"
HAND: Left

HANDLE MATERIAL: Soft Sarlink® thermal plastic handles
STEEL: 420 high carbon stainless steel
NOTE: Blades honed at 35°



VARIANTS:
 Straight Trimmer
 ET194LB - with ball tip
 ET194LCL - blades curved left
 ET194LCR - blades curved right
 ET194L-Z - serrated blades

ORIGIN:
 Made in USA

ET294X

HANDLE SIZE: Large
HANDLE COLOR: Green
OVERALL: 9 5/8"
CUT: 4"
HAND: Right

HANDLE MATERIAL: Soft Sarlink® thermal plastic handles
STEEL: 420 high carbon stainless steel
NOTE: Blades honed at 35°



VARIANTS:
 Bent Trimmer
 ET294XB - with ball tip
 ET294XCL - blades curved left
 ET294XCR - blades curved right
 ET294X-Z - serrated blades

ORIGIN:
 Made in USA

ET294L

HANDLE SIZE: Large
HANDLE COLOR: Black
OVERALL: 9 5/8"
CUT: 4"
HAND: Left

HANDLE MATERIAL: Soft Sarlink® thermal plastic handles
STEEL: 420 high carbon stainless steel
NOTE: Blades honed at 35°



VARIANTS:
 Bent Trimmer
 ET294LB - with ball tip
 ET294LCL - blades curved left
 ET294LCR - blades curved right
 ET294L-Z - serrated blades

ORIGIN:
 Made in USA

Metal detectable handles

WOLFF® ERGONOMIX® SHEARS



- Durable 420-HC stainless steel, apx. 58 HRC
- Professionally honed cutting edge
- Unique serial number for tool tracking

- Soft ergonomic thermal plastic handles
- Chemically bonded handles
- Optimized for meat processing

ET287X

HANDLE SIZE: Large
HANDLE COLOR: Green
OVERALL: 9"
CUT: 3 1/2"
HAND: Right

ERGO-TRACE®

HANDLE MATERIAL: Soft Sarlink® thermal plastic handles
STEEL: 420 high carbon stainless steel
NOTE: Blades honed at 35°



VARIANTS:
 ERGO-TRACE
 ET287XB - with ball tip
 ET287XCL - blades curved left
 ET287XCR - blades curved right
 ET287X-Z - serrated blades

ORIGIN:
 Made in USA

PS194S

HANDLE SIZE: Small
HANDLE COLOR: Pink
OVERALL: 8 7/8"
CUT: 4"
HAND: Right

HANDLE MATERIAL: Soft Sarlink® thermal plastic handles
STEEL: 420 high carbon stainless steel
NOTE: Blades honed at 35°



VARIANTS:
 Straight Trimmer
 PS194SB - with ball tip
 PS194SCL - blades curved left
 PS194SCR - blades curved right
 PS194S-Z - serrated blades

ORIGIN:
 Made in USA

PS194M

HANDLE SIZE: Medium
HANDLE COLOR: Purple
OVERALL: 9 3/8"
CUT: 4"
HAND: Right

HANDLE MATERIAL: Soft Sarlink® thermal plastic handles
STEEL: 420 high carbon stainless steel
NOTE: Blades honed at 35°



VARIANTS:
 Straight Trimmer
 PS194MB - with ball tip
 PS194MCL - blades curved left
 PS194MCR - blades curved right
 PS194M-Z - serrated blades

ORIGIN:
 Made in USA

PS194X

HANDLE SIZE: Large
HANDLE COLOR: Green
OVERALL: 9 5/8"
CUT: 4"
HAND: Right

HANDLE MATERIAL: Soft Sarlink® thermal plastic handles
STEEL: 420 high carbon stainless steel
NOTE: Blades honed at 35°



VARIANTS:
 Straight Trimmer
 PS194XB - with ball tip
 PS194XCL - blades curved left
 PS194XCR - blades curved right
 PS194X-Z - serrated blades

ORIGIN:
 Made in USA

USA made processing shears



WOLFF® ERGONOMIX® SHEARS

- Durable 420-HC stainless steel, apx. 58 HRC
- Professionally honed cutting edge
- Unique serial number for tool tracking
- Soft ergonomic thermal plastic handles
- Chemically bonded handles
- Optimized for meat processing

PS194RED

HANDLE SIZE: Large
HANDLE COLOR: Red
OVERALL: 9 5/8"
CUT: 4"
HAND: Right

HANDLE MATERIAL: Soft Sarlink® thermal plastic handles
STEEL: 420 high carbon stainless steel
NOTE: Blades honed at 35°



VARIANTS:
 Straight Trimmer
 PS194RB - with ball tip
 PS194RCL - blades curved left
 PS194RCR - blades curved right
 PS194R-Z - serrated blades

ORIGIN:
 Made in USA

PS194L

HANDLE SIZE: Large
HANDLE COLOR: Black
OVERALL: 9 5/8"
CUT: 4"
HAND: Left

HANDLE MATERIAL: Soft Sarlink® thermal plastic handles
STEEL: 420 high carbon stainless steel
NOTE: Blades honed at 35°



VARIANTS:
 Straight Trimmer
 PS194LB - with ball tip
 PS194LCL - blades curved left
 PS194LCR - blades curved right
 PS194L-Z - serrated blades

ORIGIN:
 Made in USA

PS6189

HANDLE SIZE: Small
HANDLE COLOR: Red
OVERALL: 8 7/8"
CUT: 4"
HAND: Right

HANDLE MATERIAL: Soft Sarlink® thermal plastic handles
STEEL: 420 high carbon stainless steel
NOTE: Blades honed at 35°



VARIANTS:
 Straight Trimmer
 PS6189B - with ball tip
 PS6189CL - blades curved left
 PS6189CR - blades curved right
 PS6189-Z - serrated blades

ORIGIN:
 Made in USA



WOLFF® ERGONOMIX® SHEARS



- Durable 420-HC stainless steel, apx. 58 HRC
- Professionally honed cutting edge
- Unique serial number for tool tracking

- Soft ergonomic thermal plastic handles
- Chemically bonded handles
- Optimized for meat processing

PS187BLUE

HANDLE SIZE: Large
HANDLE COLOR: Blue
OVERALL: 9"
CUT: 3 1/2"
HAND: Right

HANDLE MATERIAL: Soft Sarlink® thermal plastic handles
STEEL: 420 high carbon stainless steel
NOTE: Blades honed at 35°



VARIANTS:
Straight Trimmer
PS187BB - with ball tip
PS187BCL - blades curved left
PS187BCR - blades curved right
PS187B-Z - serrated blades

ORIGIN:
Made in USA

PS187L

HANDLE SIZE: Large
HANDLE COLOR: Black
OVERALL: 9"
CUT: 3 1/2"
HAND: Left

HANDLE MATERIAL: Soft Sarlink® thermal plastic handles
STEEL: 420 high carbon stainless steel
NOTE: Blades honed at 35°



VARIANTS:
Straight Trimmer
PS187LB - with ball tip
PS187LCL - blades curved left
PS187LCR - blades curved right
PS187L-Z - serrated blades

ORIGIN:
Made in USA

PS187LY

HANDLE SIZE: Large
HANDLE COLOR: Yellow
OVERALL: 9"
CUT: 3 1/2"
HAND: Left

HANDLE MATERIAL: Soft Sarlink® thermal plastic handles
STEEL: 420 high carbon stainless steel
NOTE: Blades honed at 35°



VARIANTS:
Straight Trimmer
PS187LYB - with ball tip
PS187LYCL - blades curved left
PS187LYCR - blades curved right
PS187LY-Z - serrated blades

ORIGIN:
Made in USA

PS187LW

HANDLE SIZE: Large
HANDLE COLOR: White
OVERALL: 9"
CUT: 3 1/2"
HAND: Left

HANDLE MATERIAL: Soft Sarlink® thermal plastic handles
STEEL: 420 high carbon stainless steel
NOTE: Blades honed at 35°



VARIANTS:
Straight Trimmer
PS187LWB - with ball tip
PS187LWCL - blades curved left
PS187LWCR - blades curved right
PS187LW-Z - serrated blades

ORIGIN:
Made in USA

USA made processing shears



WOLFF® ERGONOMIX® SHEARS

- Durable 420-HC stainless steel, apx. 58 HRC
- Professionally honed cutting edge
- Unique serial number for tool tracking
- Soft ergonomic thermal plastic handles
- Chemically bonded handles
- Optimized for meat processing

PS187S

HANDLE SIZE: Small
HANDLE COLOR: Pink
OVERALL: 8 3/8"
CUT: 3 1/2"
HAND: Right

HANDLE MATERIAL: Soft Sarlink® thermal plastic handles
STEEL: 420 high carbon stainless steel
NOTE: Blades honed at 35°



VARIANTS:
 Straight Trimmer
 PS187SB - with ball tip
 PS187SCL - blades curved left
 PS187SCR - blades curved right
 PS187S-Z - serrated blades

ORIGIN:
 Made in USA

PS187YS

HANDLE SIZE: Small
HANDLE COLOR: Yellow
OVERALL: 8 3/8"
CUT: 3 1/2"
HAND: Right

HANDLE MATERIAL: Soft Sarlink® thermal plastic handles
STEEL: 420 high carbon stainless steel
NOTE: Blades honed at 35°



VARIANTS:
 Staright Trimmer
 PS187YSB - with ball tip
 PS187YSCL - blades curved left
 PS187YSCR - blades curved right
 PS187YS-Z - serrated blades

ORIGIN:
 Made in USA

PS187WS

HANDLE SIZE: Small
HANDLE COLOR: White
OVERALL: 8 3/8"
CUT: 3 1/2"
HAND: Right

HANDLE MATERIAL: Soft Sarlink® thermal plastic handles
STEEL: 420 high carbon stainless steel
NOTE: Blades honed at 35°



VARIANTS:
 Straight Trimmer
 PS187WSB - with ball tip
 PS187WSCL - blades curved left
 PS187WSCR - blades curved right
 PS187WS-Z - serrated blades

ORIGIN:
 Made in USA

PS187M

HANDLE SIZE: Medium
HANDLE COLOR: Purple
OVERALL: 8 5/8"
CUT: 3 1/2"
HAND: Right

HANDLE MATERIAL: Soft Sarlink® thermal plastic handles
STEEL: 420 high carbon stainless steel
NOTE: Blades honed at 35°



VARIANTS:
 Straight Trimmer
 PS187MB - with ball tip
 PS187MCL - blades curved left
 PS187MCR - blades curved right
 PS187M-Z - serrated blades

ORIGIN:
 Made in USA

WOLFF® ERGONOMIX® SHEARS



- Durable 420-HC stainless steel, apx. 58 HRC
- Professionally honed cutting edge
- Unique serial number for tool tracking

- Soft ergonomic thermal plastic handles
- Chemically bonded handles
- Optimized for meat processing

PS187YM

HANDLE SIZE: Medium
HANDLE COLOR: Yellow
OVERALL: 8 5/8"
CUT: 3 1/2"
HAND: Right

HANDLE MATERIAL: Soft Sarlink® thermal plastic handles
STEEL: 420 high carbon stainless steel
NOTE: Blades honed at 35°



VARIANTS:
 Straight Trimmer
 PS187YMB - with ball tip
 PS187YMCL - blades curved left
 PS187YMCR - blades curved right
 PS187YM-Z - serrated blades

ORIGIN:
 Made in USA

PS187WM

HANDLE SIZE: Medium
HANDLE COLOR: White
OVERALL: 8 5/8"
CUT: 3 1/2"
HAND: Right

HANDLE MATERIAL: Soft Sarlink® thermal plastic handles
STEEL: 420 high carbon stainless steel
NOTE: Blades honed at 35°



VARIANTS:
 Straight Trimmer
 PS187WMB - with ball tip
 PS187WMCL - blades curved left
 PS187WMCR - blades curved right
 PS187WM-Z - serrated blades

ORIGIN:
 Made in USA

PS187X

HANDLE SIZE: Large
HANDLE COLOR: Green
OVERALL: 9"
CUT: 3 1/2"
HAND: Right

HANDLE MATERIAL: Soft Sarlink® thermal plastic handles
STEEL: 420 high carbon stainless steel
NOTE: Blades honed at 35°



VARIANTS:
 Straight Trimmer
 PS187XB - with ball tip
 PS187XCL - blades curved left
 PS187XCR - blades curved right
 PS187X-Z - serrated blades

ORIGIN:
 Made in USA

PS187RED

HANDLE SIZE: Large
HANDLE COLOR: Red
OVERALL: 9"
CUT: 3 1/2"
HAND: Right

HANDLE MATERIAL: Soft Sarlink® thermal plastic handles
STEEL: 420 high carbon stainless steel
NOTE: Blades honed at 35°



VARIANTS:
 Straight Trimmer
 PS187RB - with ball tip
 PS187RCL - blades curved left
 PS187RCR - blades curved right
 PS187R-Z - serrated blades

ORIGIN:
 Made in USA

USA made processing shears



WOLFF® ERGONOMIX® SHEARS

- Durable 420-HC stainless steel, apx. 58 HRC
- Professionally honed cutting edge
- Unique serial number for tool tracking
- Soft ergonomic thermal plastic handles
- Chemically bonded handles
- Optimized for meat processing

PS287S

HANDLE SIZE: Small
HANDLE COLOR: Pink
OVERALL: 8 3/8"
CUT: 3 1/2"
HAND: Right

HANDLE MATERIAL: Soft Sarlink® thermal plastic handles
STEEL: 420 high carbon stainless steel
NOTE: Blades honed at 35°



VARIANTS:
 Bent Trimmer
 PS287SB - with ball tip
 PS287SCL - blades curved left
 PS287SCR - blades curved right
 PS287S-Z - serrated blades

ORIGIN:
 Made in USA

PS287M

HANDLE SIZE: Medium
HANDLE COLOR: Purple
OVERALL: 8 5/8"
CUT: 3 1/2"
HAND: Right

HANDLE MATERIAL: Soft Sarlink® thermal plastic handles
STEEL: 420 high carbon stainless steel
NOTE: Blades honed at 35°



VARIANTS:
 Bent Trimmer
 PS287MB - with ball tip
 PS287MCL - blades curved left
 PS287MCR - blades curved right
 PS287M-Z - serrated blades

ORIGIN:
 Made in USA

PS287X

HANDLE SIZE: Large
HANDLE COLOR: Green
OVERALL: 9"
CUT: 3 1/2"
HAND: Right

HANDLE MATERIAL: Soft Sarlink® thermal plastic handles
STEEL: 420 high carbon stainless steel
NOTE: Blades honed at 35°



VARIANTS:
 Bent Trimmer
 PS287XB - with ball tip
 PS287XCL - blades curved left
 PS287XCR - blades curved right
 PS287X-Z - serrated blades

ORIGIN:
 Made in USA

PS287L

HANDLE SIZE: Large
HANDLE COLOR: Black
OVERALL: 9"
CUT: 3 1/2"
HAND: Left

HANDLE MATERIAL: Soft Sarlink® thermal plastic handles
STEEL: 420 high carbon stainless steel
NOTE: Blades honed at 35°



VARIANTS:
 Bent Trimmer
 PS287LB - with ball tip
 PS287LCL - blades curved left
 PS287LCR - blades curved right
 PS287L-Z - serrated blades

ORIGIN:
 Made in USA

WOLFF® ERGONOMIX® SHEARS



- Durable 420-HC stainless steel, apx. 58 HRC
- Professionally honed cutting edge
- Unique serial number for tool tracking

- Soft ergonomic thermal plastic handles
- Chemically bonded handles
- Optimized for meat processing

PS294S

HANDLE SIZE: Small
HANDLE COLOR: Pink
OVERALL: 9"
CUT: 4"
HAND: Right

HANDLE MATERIAL: Soft Sarlink® thermal plastic handles
STEEL: 420 high carbon stainless steel
NOTE: Blades honed at 35°



VARIANTS:
Bent Trimmer
PS294SB - with ball tip
PS294SCL - blades curved left
PS294SCR - blades curved right
PS294S-Z - serrated blades

ORIGIN:
Made in USA

PS294M

HANDLE SIZE: Medium
HANDLE COLOR: Purple
OVERALL: 9 3/8"
CUT: 4"
HAND: Right

HANDLE MATERIAL: Soft Sarlink® thermal plastic handles
STEEL: 420 high carbon stainless steel
NOTE: Blades honed at 35°



VARIANTS:
Bent Trimmer
PS294MB - with ball tip
PS294MCL - blades curved left
PS294MCR - blades curved right
PS294M-Z - serrated blades

ORIGIN:
Made in USA

PS294X

HANDLE SIZE: Large
HANDLE COLOR: Green
OVERALL: 9 5/8"
CUT: 4"
HAND: Right

HANDLE MATERIAL: Soft Sarlink® thermal plastic handles
STEEL: 420 high carbon stainless steel
NOTE: Blades honed at 35°



VARIANTS:
Bent Trimmer
PS294XB - with ball tip
PS294XCL - blades curved left
PS294XCR - blades curved right
PS294X-Z - serrated blades

ORIGIN:
Made in USA

PS294L

HANDLE SIZE: Large
HANDLE COLOR: Black
OVERALL: 9 5/8"
CUT: 4"
HAND: Left

HANDLE MATERIAL: Soft Sarlink® thermal plastic handles
STEEL: 420 high carbon stainless steel
NOTE: Blades honed at 35°



VARIANTS:
Bent Trimmer
PS294LB - with ball tip
PS294LCL - blades curved left
PS294LCR - blades curved right
PS294L-Z - serrated blades

ORIGIN:
Made in USA

USA made processing shears



WOLFF® ERGONOMIX® SHEARS

- Durable 420-HC stainless steel, apx. 58 HRC
- Professionally honed cutting edge
- Unique serial number for tool tracking
- Hard ergonomic plastic handles
- Chemically bonded handles
- Optimized for meat processing

PS294PB

HANDLE SIZE: Medium
HANDLE COLOR: Blue
OVERALL: 9 3/8"
CUT: 4 "
HAND: Right

HANDLE MATERIAL: Hard Polypropylene plastic handles
STEEL: 420 high carbon stainless steel
NOTE: Blades honed at 35°



VARIANTS:
 Bent Trimmer
 PS294PBB - with ball tip
 PS294PBCL - blades curved left
 PS294PBCR - blades curved right
 PS294PB-Z - serrated blades

ORIGIN:
 Made in USA

PS294PP

HANDLE SIZE: Medium
HANDLE COLOR: Purple
OVERALL: 9 3/8"
CUT: 4 "
HAND: Right

HANDLE MATERIAL: Hard Polypropylene plastic handles
STEEL: 420 high carbon stainless steel
NOTE: Blades honed at 35°



VARIANTS:
 Bent Trimmer
 PS294PPB - with ball tip
 PS294PPCL - blades curved left
 PS294PPCR - blades curved right
 PS294PP-Z - serrated blades

ORIGIN:
 Made in USA

PS294PBC

HANDLE SIZE: Medium
HANDLE COLOR: Blue
OVERALL: 9 3/8"
CUT: 4 "
HAND: Right
INCLUDES: Cartilage scraper

HANDLE MATERIAL: Hard Polypropylene plastic handles
STEEL: 420 high carbon stainless steel
NOTE: Blades honed at 35°



VARIANTS:
 Bent Trimmer
 PS294PBC-Z - serrated blades
 Left Hand - Black
 PS294LC

ORIGIN:
 Made in USA

PS294PPC

HANDLE SIZE: Medium
HANDLE COLOR: Purple
OVERALL: 9 3/8"
CUT: 4 "
HAND: Right
INCLUDES: Cartilage scraper

HANDLE MATERIAL: Hard Polypropylene plastic handles
STEEL: 420 high carbon stainless steel
NOTE: Blades honed at 35°



VARIANTS:
 Bent Trimmer
 PS294PPC-Z - serrated blades

ORIGIN:
 Made in USA

WOLFF® ERGONOMIX® SHEARS



- Durable 420-HC stainless steel, apx. 58 HRC
- Professionally honed cutting edge
- Unique serial number for tool tracking
- Hard ergonomic plastic handles
- Chemically bonded handles
- Optimized for meat processing

PS287PB

HANDLE SIZE: Medium
HANDLE COLOR: Blue
OVERALL: 8 5/8"
CUT: 3 1/2"
HAND: Right

HANDLE MATERIAL: Hard Polypropylene plastic handles
STEEL: 420 high carbon stainless steel
NOTE: Blades honed at 35°



VARIANTS:
 Bent Trimmer
 PS287PBB - with ball tip
 PS287PBCL - blades curved left
 PS287PBCR - blades curved right
 PS287PB-Z - serrated blades

ORIGIN:
 Made in USA

PS287PP

HANDLE SIZE: Medium
HANDLE COLOR: Purple
OVERALL: 8 5/8"
CUT: 3 1/2"
HAND: Right

HANDLE MATERIAL: Hard Polypropylene plastic handles
STEEL: 420 high carbon stainless steel
NOTE: Blades honed at 35°



VARIANTS:
 Bent Trimmer
 PS287PPB - with ball tip
 PS287PPCL - blades curved left
 PS287PPCR - blades curved right
 PS287P-Z - serrated blades

ORIGIN:
 Made in USA

PS287PBC

HANDLE SIZE: Medium
HANDLE COLOR: Blue
OVERALL: 8 5/8"
CUT: 3 1/2"
HAND: Right
INCLUDES: Cartilage scraper

HANDLE MATERIAL: Hard Polypropylene plastic handles
STEEL: 420 high carbon stainless steel
NOTE: Blades honed at 35°



VARIANTS:
 Bent Trimmer
 PS287PBC-Z - serrated blades
 Left Hand - Black
 PS287LC

ORIGIN:
 Made in USA

PS287PPC

HANDLE SIZE: Medium
HANDLE COLOR: Purple
OVERALL: 8 5/8"
CUT: 3 1/2"
HAND: Right
INCLUDES: Cartilage scraper

HANDLE MATERIAL: Hard Polypropylene plastic handles
STEEL: 420 high carbon stainless steel
NOTE: Blades honed at 35°



VARIANTS:
 Bent Trimmer
 PS287PPC-Z - serrated blades

ORIGIN:
 Made in USA

USA made processing shears



WOLFF® ERGONOMIX® SHEARS

- Durable 420-HC stainless steel, apx. 58 HRC
- Professionally honed cutting edge
- Unique serial number for tool tracking
- Soft ergonomic thermal plastic handles
- Chemically bonded handles
- Optimized for meat processing

PS287XPB

HANDLE SIZE: Large
HANDLE COLOR: Blue
OVERALL: 9"
CUT: 3 1/2"
HAND: Right

HANDLE MATERIAL: Hard Polypropylene plastic handles
STEEL: 420 high carbon stainless steel
NOTE: Blades honed at 35°



VARIANTS:
 Bent Trimmer
 PS287XPBB - with ball tip
 PS287XPBCL - blades curved left
 PS287XPBCR - blades curved right
 PS287XPB-Z - serrated blades

ORIGIN:
 Made in USA

PS287XPP

HANDLE SIZE: Large
HANDLE COLOR: Purple
OVERALL: 9"
CUT: 3 1/2"
HAND: Right

HANDLE MATERIAL: Hard Polypropylene plastic handles
STEEL: 420 high carbon stainless steel
NOTE: Blades honed at 35°



VARIANTS:
 Bent Trimmer
 PS287XPPB - with ball tip
 PS287XPPCL - blades curved left
 PS287XPPCR - blades curved right
 PS287XPP-Z - serrated blades

ORIGIN:
 Made in USA

PS387X

HANDLE SIZE: Large
HANDLE COLOR: Green
OVERALL: 9"
CUT: 3 3/4"
HAND: Right

HANDLE MATERIAL: Soft Sarlink® thermal plastic handles
STEEL: 420 high carbon stainless steel
NOTE: Blades honed at 35°



VARIANTS:
 Bent Trimmer
 PS387XB - with ball tip
 PS387XCL - blades curved left
 PS387XCR - blades curved right
 PS387X-Z - serrated blades

ORIGIN:
 Made in USA

PS394X

HANDLE SIZE: Large
HANDLE COLOR: Green
OVERALL: 9 1/2"
CUT: 4"
HAND: Right

HANDLE MATERIAL: Soft Sarlink® thermal plastic handles
STEEL: 420 high carbon stainless steel
NOTE: Blades honed at 35°



VARIANTS:
 Bent Trimmer
 PS394XB - with ball tip
 PS394XCL - blades curved left
 PS394XCR - blades curved right
 PS394X-Z - serrated blades

ORIGIN:
 Made in USA

WOLFF® TENDER® SHEARS



- Durable 420-HC stainless steel, apx. 58 HRC
- Professionally honed cutting edge
- Unique serial number for tool tracking
- Soft ergonomic thermal plastic handles
- Chemically bonded handles
- Optimized for meat processing

PS278T

HANDLE SIZE: Large
HANDLE COLOR: Red
OVERALL: 8"
CUT: 2 3/4"
HAND: Right

HANDLE MATERIAL: Soft Sarlink® thermal plastic handles
STEEL: 420 high carbon stainless steel
NOTE: Blades honed at 35°



VARIANTS:
Bent Trimmer
PS278T-Z - serrated blades

ORIGIN:
Made in USA

PS278TL

HANDLE SIZE: Large
HANDLE COLOR: Black
OVERALL: 8"
CUT: 2 3/4"
HAND: Left

HANDLE MATERIAL: Soft Sarlink® thermal plastic handles
STEEL: 420 high carbon stainless steel
NOTE: Blades honed at 35°



VARIANTS:
Bent Trimmer
PS278TL-Z - serrated blades

ORIGIN:
Made in USA



USA made processing shears



WOLFF® ERGONOMIX® SHEARS

- Durable 420-HC stainless steel, apx. 58 HRC
- Professionally honed cutting edge
- Unique serial number for tool tracking
- Soft ergonomic thermal plastic handles
- Chemically bonded handles
- Optimized for meat processing

PS165

HANDLE SIZE: Large
HANDLE COLOR: Black
OVERALL: 6 1/2"
CUT: 1 5/8"
HAND: Ambidextros

HANDLE MATERIAL: Soft Sarlink® thermal plastic handles
STEEL: 420 high carbon stainless steel
NOTE: Blades honed at 35°



VARIANTS:
 Straight Trimmer
 PS165C - blades curved

ORIGIN:
 Made in USA

PS172

HANDLE SIZE: Large
HANDLE COLOR: Black
OVERALL: 7 1/4"
CUT: 2 1/2"
HAND: Ambidextros

HANDLE MATERIAL: Soft Sarlink® thermal plastic handles
STEEL: 420 high carbon stainless steel
NOTE: Blades honed at 35°



VARIANTS:
 Straight Trimmer
 PS172C - blades curved

ORIGIN:
 Made in USA





KAI® ERGONOMIX® SHEARS

- Durable AU-6 Japanese stainless steel, apx. 56 HRC
- Professionally honed cutting edge
- Unique serial number for tool tracking
- Soft ergonomic thermal plastic handles
- Chemically bonded handles
- Optimized for meat processing

PS10

HANDLE SIZE: Medium
HANDLE COLOR: Green
OVERALL: 8 1/4"
CUT: 3 3/8"
HAND: Right

HANDLE MATERIAL: Soft Santoprene® thermal plastic handles
STEEL: AU-6 stainless steel
NOTE: Blades honed at 35°



VARIANTS:
 Bent Trimmer
 PS11 - with ball tip
 PS12-CL - blades curved left
 PS12 - blades curved right
 PS10-Z - serrated blades

ORIGIN:
 Made in Vietnam

PS60

HANDLE SIZE: Large
HANDLE COLOR: Green
OVERALL: 8 3/4"
CUT: 3 3/8"
HAND: Right

HANDLE MATERIAL: Soft Santoprene® thermal plastic handles
STEEL: AU-6 stainless steel
NOTE: Blades honed at 35°



VARIANTS:
 Bent Trimmer
 PS61 - with ball tip
 PS62-CL - blades curved left
 PS62 - blades curved right
 PS60-Z - serrated blades

ORIGIN:
 Made in Vietnam

PS70

HANDLE SIZE: Large
HANDLE COLOR: Green
OVERALL: 9 1/2"
CUT: 4"
HAND: Right

HANDLE MATERIAL: Soft Santoprene® thermal plastic handles
STEEL: AU-6 stainless steel
NOTE: Blades honed at 35°



VARIANTS:
 Bent Trimmer
 PS71 - with ball tip
 PS72-CL - blades curved left
 PS72 - blades curved right
 PS70-Z - serrated blades

ORIGIN:
 Made in Vietnam

PS50

HANDLE SIZE: Medium
HANDLE COLOR: Green
OVERALL: 9 3/4"
CUT: 4 1/4"
HAND: Right

HANDLE MATERIAL: Soft Santoprene® thermal plastic handles
STEEL: AU-6 stainless steel
NOTE: Blades honed at 35°



VARIANTS:
 Bent Trimmer
 PS51 - with ball tip
 PS52-CL - blades curved left
 PS52 - blades curved right
 PS50-Z - serrated blades

ORIGIN:
 Made in Japan



KAI® ERGONOMIX® SHEARS

- Durable AU-6 Japanese stainless steel, apx. 56 HRC
- Professionally honed cutting edge
- Unique serial number for tool tracking
- Soft ergonomic thermal plastic handles
- Chemically bonded handles
- Optimized for meat processing

PS5275

HANDLE SIZE: Medium
HANDLE COLOR: Black
OVERALL: 11"
CUT: 4 3/4"
HAND: Right

HANDLE MATERIAL: Soft Santoprene® thermal plastic handles
STEEL: AU-6 stainless steel
NOTE: Blades honed at 35°



VARIANTS:
 Bent Trimmer
 PS5275B - with ball tip
 PS5275CL - blades curved left
 PS5275CR - blades curved right
 PS5275-Z - serrated blades

ORIGIN:
 Made in Japan

PS14

HANDLE SIZE: Medium
HANDLE COLOR: Black
OVERALL: 8"
CUT: 3 3/8"
HAND: True left

HANDLE MATERIAL: Soft Santoprene® thermal plastic handles
STEEL: AU-6 stainless steel
NOTE: Blades honed at 35°



VARIANTS:
 Bent Trimmer
 PS15 - with ball tip
 PS16-CL - blades curved left
 PS16 - blades curved right
 PS14-Z - serrated blades

ORIGIN:
 Made in Japan

PS64

HANDLE SIZE: Medium
HANDLE COLOR: Black
OVERALL: 8 3/4"
CUT: 3 3/8"
HAND: Left

HANDLE MATERIAL: Soft Santoprene® thermal plastic handles
STEEL: AU-6 stainless steel
NOTE: Blades honed at 35°



VARIANTS:
 Bent Trimmer
 PS65 - with ball tip
 PS66-CL - blades curved left
 PS66 - blades curved right
 PS64-Z - serrated blades

ORIGIN:
 Made in Vietnam

PS626

HANDLE SIZE: Medium
HANDLE COLOR: Black
OVERALL: 6 1/4"
CUT: 1 5/8"
HAND: Ambidextros

HANDLE MATERIAL: Soft Santoprene® thermal plastic handles
STEEL: AU-6 stainless steel
NOTE: Blades honed at 35°



VARIANTS:
 Bent Trimmer
 PS626-Z - serrated blades

ORIGIN:
 Made in Japan

Japan/Vietnam made processing shears

WOLFF® ALL-METAL SHEARS



- Durable 420-HC stainless steel, apx. 56 HRC
- Professionally honed cutting edge
- Unique serial number for tool tracking

- Stainless steel nut
- High leverage reduces cutting pressure
- Optimized for meat processing

PS626-7

HANDLE SIZE: Medium
HANDLE COLOR: Black
OVERALL: 7 1/2"
CUT: 3"
HAND: Ambidextros

HANDLE MATERIAL: Soft Santoprene® thermal plastic handles
STEEL: AU-6 stainless steel
NOTE: Blades honed at 35°



VARIANTS:
 Bent Trimmer
 PS626-7-Z - serrated blades

ORIGIN:
 Made in Japan

PS775

HANDLE SIZE: Medium
HANDLE: Straight
OVERALL: 7 1/2"
CUT: 2"
HAND: Right

STEEL: 420-HC stainless steel
NOTE: Blades honed at 35°



VARIANTS:
 Straight Trimmer
 None

ORIGIN:
 Made in USA

PS-W-716

HANDLE SIZE: Medium
HANDLE: Straight
TIP: Ball point
OVERALL: 7"
CUT: 1 1/2"
HAND: Right

STEEL: Carbon steel, coat with food grade oil to prevent rust
NOTE: Blades honed at 35°



VARIANTS:
 Straight Trimmer
 None

ORIGIN:
 Made in USA



SMS-2204-SS

Online Scissors Sharpener

USA made processing shears



WOLFF® ALL-METAL SHEARS

- Durable 420-HC stainless steel, apx. 56 HRC
- Professionally honed cutting edge
- Unique serial number for tool tracking
- Stainless steel nut
- High leverage reduces cutting pressure
- Optimized for meat processing

PS20

HANDLE SIZE: Medium
HANDLE: Straight
OVERALL: 8"
CUT: 3"
HAND: Right

STEEL: 420-HC stainless steel
NOTE: Blades honed at 35°



VARIANTS:
 Straight Trimmer
 None

ORIGIN:
 Made in USA

PS21

HANDLE SIZE: Medium
HANDLE: Straight
TIP: Ball point
OVERALL: 8"
CUT: 3"
HAND: Right

STEEL: 420-HC stainless steel with ball point
NOTE: Blades honed at 35°



VARIANTS:
 Straight Trimmer
 None

ORIGIN:
 Made in USA

PS22

HANDLE SIZE: Medium
HANDLE: Bent down
OVERALL: 8"
CUT: 3"
HAND: Right

STEEL: 420-HC stainless steel
USE: Handles bent down for eviscerating
NOTE: Blades honed at 35°



VARIANTS:
 Straight Trimmer
 None

ORIGIN:
 Made in USA

PS23

HANDLE SIZE: Medium
HANDLE: Bent down
TIP: Ball point
OVERALL: 8"
CUT: 3"
HAND: Right

STEEL: 420-HC stainless steel with ball point
USE: Handles bent down for eviscerating
NOTE: Blades honed at 35°



VARIANTS:
 Straight Trimmer
 None

ORIGIN:
 Made in USA

WOLFF® ALL-METAL SHEARS



- Durable 420-HC stainless steel, apx. 56 HRC
- Professionally honed cutting edge
- Unique serial number for tool tracking

- Stainless steel nut
- High leverage reduces cutting pressure
- Optimized for meat processing

PS40

HANDLE SIZE: Large
HANDLE: Straight
OVERALL: 9"
CUT: 3"
HAND: Right

STEEL: 420-HC stainless steel
NOTE: Blades honed at 35°



VARIANTS:
 Straight Trimmer
 None

ORIGIN:
 Made in USA

PS41

HANDLE SIZE: Large
HANDLE: Straight
TIP: Ball point
OVERALL: 9"
CUT: 3"
HAND: Right

STEEL: 420-HC stainless steel with ball point
NOTE: Blades honed at 35°



VARIANTS:
 Straight Trimmer
 None

ORIGIN:
 Made in USA

PS42

HANDLE SIZE: Large
HANDLE: Bent down
OVERALL: 9"
CUT: 3"
HAND: Right

STEEL: 420-HC stainless steel
USE: Handles bent down for eviscerating
NOTE: Blades honed at 35°



VARIANTS:
 Straight Trimmer
 None

ORIGIN:
 Made in USA

PS43

HANDLE SIZE: Large
HANDLE: Bent down
TIP: Ball point
OVERALL: 9"
CUT: 3"
HAND: Right

STEEL: 420-HC stainless steel with ball point
USE: Handles bent down for eviscerating
NOTE: Blades honed at 35°



VARIANTS:
 Straight Trimmer
 None

ORIGIN:
 Made in USA

USA made processing shears



IVO® PROCESSING KNIVES

- High-quality stainless steel
- Professionally honed cutting edge
- Unique serial number for tool tracking
- USDA approved polypropylene handles
- Ergonomic non-slip grip
- Optimized for meat processing

55003.13.01

HANDLE COLOR: Black
HANDLE: Polypropylene
BLADE: Curved Boning Knife
CUT: 5"

STEEL: X50 Cr Mo V15 -
 chromium-molybdenum-vanadium
FLEX: Semi-flex



ORIGIN:
 Made in Portugal

55003.15.01

HANDLE COLOR: Black
HANDLE: Polypropylene
BLADE: Curved Boning Knife
CUT: 6"

STEEL: X50 Cr Mo V15 -
 chromium-molybdenum-vanadium
FLEX: Semi-flex



ORIGIN:
 Made in Portugal

55134.10.01

HANDLE COLOR: Black
HANDLE: Polypropylene
BLADE: Narrow Boning Knife
CUT: 4"

STEEL: X50 Cr Mo V15 -
 chromium-molybdenum-vanadium
FLEX: Stiff



ORIGIN:
 Made in Portugal

232011.10.13

HANDLE COLOR: Orange
HANDLE: Polypropylene
BLADE: Boning Knife
CUT: 4"

STEEL: X50 Cr Mo V15 -
 chromium-molybdenum-vanadium
FLEX: Stiff



ORIGIN:
 Made in Portugal

IVO® PROCESSING KNIVES



- High-quality stainless steel
- Professionally honed cutting edge
- Unique serial number for tool tracking
- USDA approved polypropylene handles
- Ergonomic non-slip grip
- Optimized for meat processing

93003.13.01

HANDLE COLOR: Black
HANDLE: Double Injection:
Polypropylene and TPE
BLADE: Curved Boning Knife
CUT: 5"

STEEL: X50 Cr Mo V15 -
chromium-molybdenum-vanadium
FLEX: Semi-flex



ORIGIN:
Made in Portugal

93003.15.01

HANDLE COLOR: Black
HANDLE: Double Injection:
Polypropylene and TPE
BLADE: Curved Boning Knife
CUT: 6"

STEEL: X50 Cr Mo V15 -
chromium-molybdenum-vanadium
FLEX: Semi-flex



ORIGIN:
Made in Portugal

93011.10.01

HANDLE COLOR: Black
HANDLE: Double Injection:
Polypropylene and TPE
BLADE: Boning Knife
CUT: 4"

STEEL: X50 Cr Mo V15 -
chromium-molybdenum-vanadium
FLEX: Stiff



ORIGIN:
Made in Portugal

93011.15.01

HANDLE COLOR: Black
HANDLE: Double Injection:
Polypropylene and TPE
BLADE: Boning Knife
CUT: 6"

STEEL: X50 Cr Mo V15 -
chromium-molybdenum-vanadium
FLEX: Stiff



ORIGIN:
Made in Portugal

Precision processing knives for professionals



IVO® PROCESSING KNIVES

- High-quality stainless steel
- Professionally honed cutting edge
- Unique serial number for tool tracking
- USDA approved polypropylene handles
- Ergonomic non-slip grip
- Optimized for meat processing

83003.13.01

HANDLE COLOR: Black
HANDLE: Polypropylene and TPE
BLADE: Curved Boning Knife
CUT: 5"

STEEL: X50 Cr Mo V15 - chromium-molybdenum-vanadium
FLEX: Semi-flex



ORIGIN:
 Made in Portugal

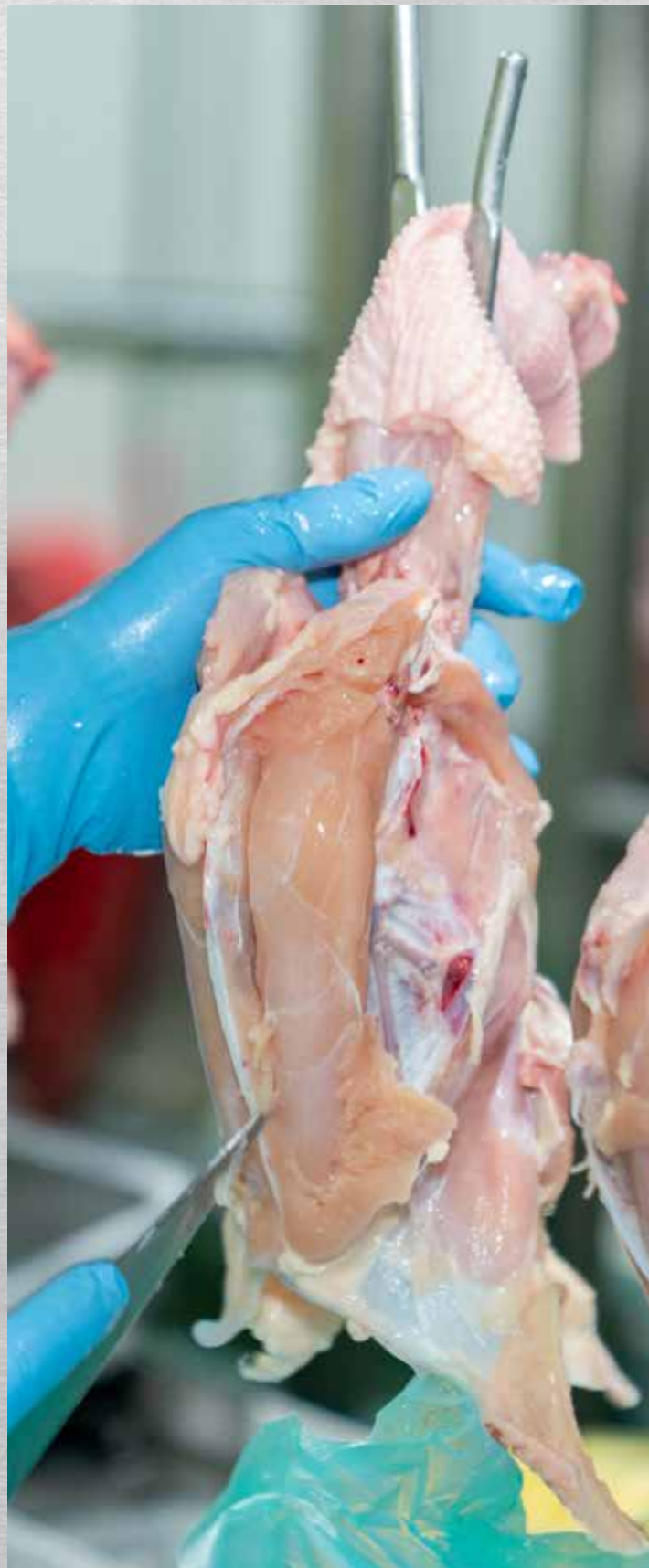
83003.15.01

HANDLE COLOR: Black
HANDLE: Polypropylene and TPE
BLADE: Curved Boning Knife
CUT: 6"

STEEL: X50 Cr Mo V15 - chromium-molybdenum-vanadium
FLEX: Semi-flex



ORIGIN:
 Made in Portugal



IVO® PROCESSING KNIVES



- High-quality stainless steel
- Professionally honed cutting edge
- Unique serial number for tool tracking
- USDA approved polypropylene handles
- Ergonomic non-slip grip
- Optimized for meat processing

96011.15.01

HANDLE COLOR: Black
HANDLE: Polypropylene
BLADE: Boning Knife
CUT: 6"

STEEL: X50 Cr Mo V15 -
chromium-molybdenum-vanadium
FLEX: Stiff



ORIGIN:
Made in Portugal

96134.10.01

HANDLE COLOR: Black
HANDLE: Polypropylene
BLADE: Boning Knife
CUT: 4"

STEEL: X50 Cr Mo V15 -
chromium-molybdenum-vanadium
FLEX: Stiff



ORIGIN:
Made in Portugal

96434.08.13

HANDLE COLOR: Orange
HANDLE: Polypropylene
BLADE: Clip Point Boning Knife
CUT: 3"

STEEL: X50 Cr Mo V15 -
chromium-molybdenum-vanadium
FLEX: Stiff



ORIGIN:
Made in Portugal

211008.15.09

HANDLE COLOR: Red
HANDLE: Polypropylene
BLADE: Boning Knife
CUT: 6"

STEEL: X50 Cr Mo V15 -
chromium-molybdenum-vanadium
FLEX: Stiff



ORIGIN:
Made in Portugal

Precision processing knives for professionals



SMS - Sharpening Made Simple

- Dexter Russell blades
- Professionally honed cutting edge
- Tender knife replaces X cut
- USDA approved polypropylene handles
- Ergonomic non-slip grip
- Optimized for cutting chicken tenders

SMS1015X

HANDLE COLOR: Blue
HANDLE: Opens for easy sharpening
BLADE: Two blades angled and cambered for optimum cut
CUT: 6"

STEEL: Dexter stainless steel



VARIANTS:

SMS1015XS - with spring between the blades

ORIGIN:
Made in USA

SMS2400

DESCRIPTION: Online double bladed knife sharpener, restores edge on double-bladed knife

STEEL: 420-HC stainless steel



VARIANTS:

None

ORIGIN:
Made in USA

SMS-2204

ONLINE SCISSORS SHARPENER:
BODY COLOR: Blue polypropylene body

STEEL: 420-HC stainless steel

NOTE: Only for scissors sharpened at 35°



VARIANTS:

SMS-2204-WHITE
ONLINE SCISSORS SHARPENER:
BODY COLOR: White polypropylene body

ORIGIN:
Made in USA

SMS-2204-SS

ONLINE SCISSORS SHARPENER:
BODY : Stainless Steel

STEEL: 420-HC stainless steel

NOTE: Only for scissors sharpened at 35°



VARIANTS:

None

ORIGIN:
Made in USA



TWICE AS SHARP®

- Honing produces scissors 2 - 6 times sharper
- Motor made in Taiwan all other parts USA made
- Free floating arm system
- Shears-lock clamp opens wide for thick blades
- Onsite training available

POU-TAS



30004

Standard scissors clamp



30007

Ergonomic scissors clamp



40000-15

Arm set for red motor

40000

Arm set for teal/grey motor



20600

Pink hone, used to remove damage on the inside of the blade



20620

Wheel dressing brick



T-BAR

Diamond plated wheel dresser



27000

White sharpening stone



25280

Poultry honing wheel



25000

Buffing wheel





WEREWOLFF

- Honing produces scissors 2 - 6 times sharper
- Motor made in Taiwan all other parts USA made
- DLC coated guide block
- Similar shears sharpened faster
- Onsite training available
- Burr removal rod



WW13535

NAME: Guide block
DESCRIPTION: Block 35° x 35°, coated with DLC, diamond like carbon



WW80005

NAME: Deburr rod
DESCRIPTION: Used to remove the burrs from the blades during sharpening

WW10110

DESCRIPTION: WereWolff belt scissors sharpener
VOLTAGE: 110 volts
BELT SIZE: 1 3/8" x 48"

WW10240

DESCRIPTION: WereWolff belt scissors sharpener
VOLTAGE: 240 volts
BELT SIZE: 1 3/8" x 48"



WEREWOLFF

- Honing produces scissors 2 - 6 times sharper
- Motor made in Taiwan all other parts USA made
- DLC coated guide block
- Similar shears sharpened faster
- Onsite training available
- Burr removal rod



WW80120

BELT COLOR: Green
GRIT: 120 Ceramic Ceramit
SIZE: 1 3/8" x 48"



WW80400

BELT COLOR: Brown
GRIT: 400 silicon carbide
SIZE: 1 3/8" x 48"



WW80300

NAME: Fels-Naptha
USE: Belt dress - lube
SIZE: 5.0 oz bar



DC-FILTER

QUANTITY: Each
SPECIFICATION: Dust collector filter, Merv 8

DC-FILTER-CP

QUANTITY: Case of 12 filters
SPECIFICATION: Dust collector filter, Merv 8



ULF-1100TL

NAME: UberLight Flex
USE: LED task light, needs to be mounted
COLOR: White



ULF-3200TL

NAME: UberLight Flex
USE: LED task light with USB power adaptor and C clamp
COLOR: Black



DC-1000

Dust Collector for Twice As Sharp® and WereWolff® scissors sharpening systems



ROUND KNIFE SHARPENER

- Sharpens small to large round knives
- Motor made in Taiwan all other parts USA made
- Sharpen and polish to razor sharp edge
- Onsite training available



25280

Poultry honing wheel



Large Blade Holder

2.75" OD
2" ID, 1.68" ID, 1.575"

RS-0050 large blade adaptor
RS-0052 adaptor cover
RS-0054 mounting screw
1137747 wing nut



20620

Wheel dressing brick



T-BAR

Diamond plated wheel dresser



25100

Polishing wheel



23201

Polishing compound



Large Blade Holder

1.875" OD
1" ID, 35mm" ID

RS-0060 large blade adaptor
RS-0062 adaptor cover
RS-0064 mounting screw
1137747 wing nut

Not shown

TRUHONE® KNIFE SHARPENER



- Great for in-house knife sharpening
- WHL DRESS - dress wheel set round
- Fast and easy to use



51000

220 grit wheel set



51222

240 grit diamond wheel set



51100

100 grit wheel set



51221

1000 grit ceramic wheel set





WOLFF TRAX®

- Daily reports - shows all daily scans
- Life cycle reporting - keeps track of the number of times a tool is sharpened
- Reconciliation reporting - easily take notes of the processes used to find a missing item
- Assigned reporting - real time information about what items are currently in production

- Missing report - quickly informs management what items are missing
- Scrap reports - reports the number of items that have been scrapped daily, weekly, monthly, and annually'
- Hourly checks - allows management to determine if tools are accounted for



KEYENCE HAND-HELD SCANNER



BT-A700GA

DESCRIPTION: Keyence hand held computer
WIRELESS: IEEE 802.11a/b/g/n/ac
MAIN BATTERY: Approx 32 hours continuous usage
DISPLAY: 5.0" TFT color LCD
DROP RESISTANCE: Onto concrete from 6', up to 20000 impacts from 1' (multiple drops to concrete)

BT-ACG74

DESCRIPTION: Keyence 4 slot battery charger



BT-AUC7UL

DESCRIPTION: Keyence USB/LAN communication cradle



BT-AB1

DESCRIPTION: Keyence spare battery



OP-88406

DESCRIPTION: Keyence rubber bumper





WOLFF TRAX®

- Etch stainless steel with 2D barcode and eye readable serial numbers
- Etch plastic with 2D barcode and eye readable serial numbers
- Each tool with unique serial number for tool tracking
- Custom etch many different tools for tracking
- Custom stainless steel tags for stainless steel mesh glove
- Custom stainless steel tags for totes and buckets
- Custom stainless steel tags for line and postion

ICS600

DESCRIPTION: Bucket - tote tag



ETCH-AG

DESCRIPTION: Etch serial number on your arm guards



WOLFF TRAX TOOL TRACKING SOFTWARE

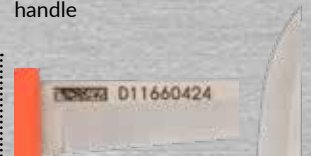
ICS610

DESCRIPTION: Station - position tag



ETCH-K

DESCRIPTION: Etch serial number on your knife blade or handle



ETCH-KS

DESCRIPTION: Etch serial number on your knife steel



ICS605

DESCRIPTION: Glove tag



Contact Wolff
to etch 2D
barcode serial
numbers on
metal or plastics



Anago® Knife Sharpness Tester

- Can test a wide range of blades
- Easy to use
- Non-destructive testing
- Accurate measurements of the knife blade from tip to heel, with over 70 independent measurements for a standard 8" blade
- Sharper knives improve safety and yields
- Sharpness data provided for knife sharpening program
- Provides fully independent analysis of critical aspects of the knife including the knife tip
- Measures sharpness like in a real life application, from heal to tip

a230

DESCRIPTION: New Anago a230 Analyser - Knife edition
MAX BLADE LENGTH: 12"
TESTING SPEED: 20% faster
SCORING: Built in reporting for industry-standard Anago score
COMPUTER: Integrated computer technology and hardware with touchscreen, no external PC needed
SCANNER: Connects to inventory system to enter data into your inventory system recording the serial number of the knife



KST200

DESCRIPTION: Anago KST knife sharpness tester
MAX BLADE LENGTH: 8"
SCORING: Industry-standard Anago score
COMPUTER: External PC required to integrate with KST knife sharpness tester

KST300

DESCRIPTION: Anago KST knife sharpness tester
MAX BLADE LENGTH: 12"
SCORING: Industry-standard Anago score
COMPUTER: External PC required to integrate with KST knife sharpness tester

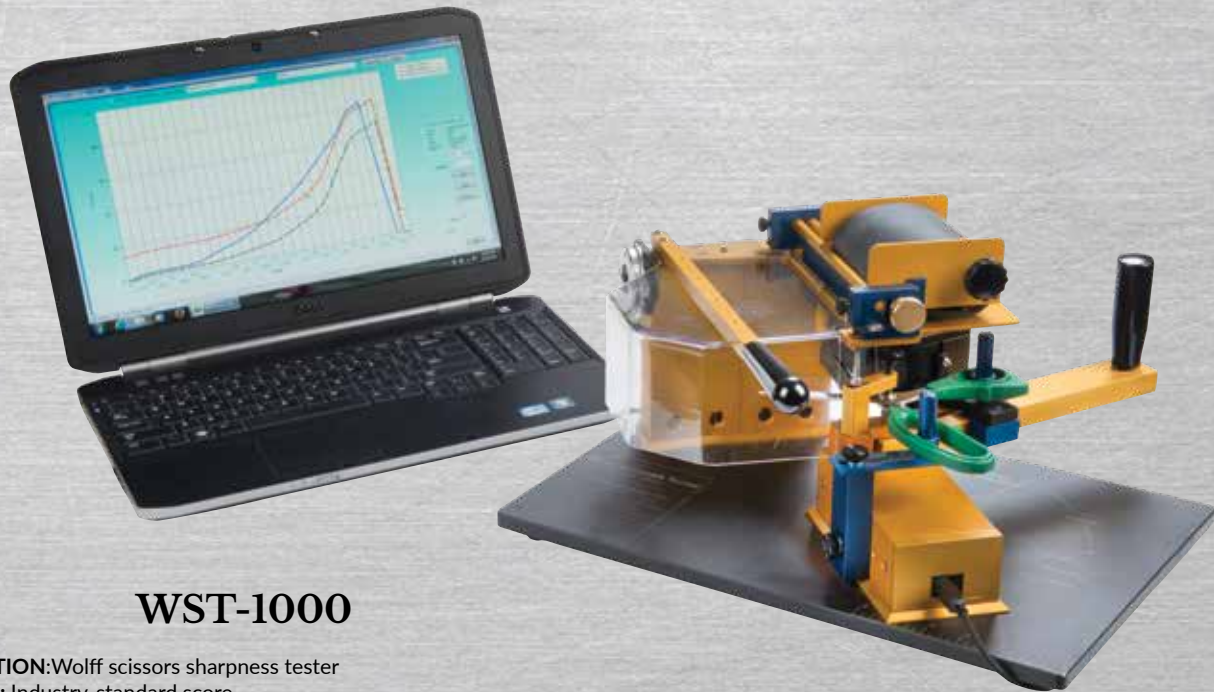


ST-TM-5

DESCRIPTION: Genuine Anago test media, designed and calibrated for accurate results
ROLL: Approximately 80 - 120 knife tests per roll
GAP: 1" gap between tests is recommended
BOX: Contains five rolls, 25 meters in length

Wolff® Scissors Sharpness Tester

- Certify the quality of your scissors sharpening
- Test material simulates cutting through 1-1/2" thickness of chicken
- Measures cutting pressure from pivot to tip
- Know when to sharpen your scissors
- Verify the online sharpening methods
- Plots cutting pressure on graph compares it to the standard



WST-1000

DESCRIPTION: Wolff scissors sharpness tester
SCORING: Industry-standard score
COMPUTER: External PC required to integrate with Wolff scissors sharpness tester

ST3001

DESCRIPTION: Neoprene test media
ROLL: 4" wide x 36" long





I want to say thank you to our many customers who have supported us and helped us be successful over these last 40 years. Wolff Industries, Inc. was founded in 1982 by my father, Lee Wolff, the inventor of the Twice As Sharp® Scissors Sharpener. The legacy he left us was to value the customer with quality service and products.

Many new products including the best industrial scissors have been added over these many years and I am excited to see what the next 40 years will bring.

Sharpest regards,

David Wolff
CEO, Wolff Industries, Inc., Wolff Indiana, LLC.



107 Interstate Park
Spartanburg, SC 29303
P: 800.888.3832
F: 864.587.0660
www.wolffindustries.com
customerservice@wolffind.com

