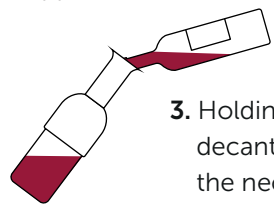
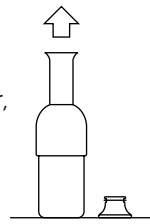


User Guide

Decant | Serve | Preserve

1. Open your bottle of wine and pour a glass.

2. Remove the eto stopper, and fully extend the neck (approx. 11cm)



3. Holding eto at an angle, decant your bottle through the neck to 'open up' the wine and bring out its character.

4. Pour a glass: the long neck gently oxygenates the wine and its sharp lip ensures drip free pouring.

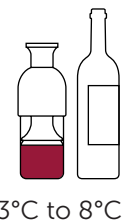


insert stopper first!



5. Replace the closure and push the neck down. The valve automatically locks when it reaches the wine.

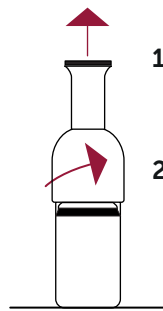
6. Store eto in a cool, dark place. It has been designed to fit perfectly into a fridge door.



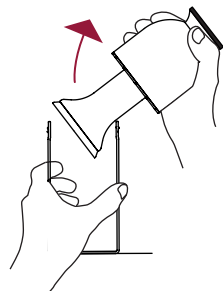
7. Lift up the neck very slightly to release the seal, before pouring your next glass of wine.

Cleaning eto

1. Fully extend the neck



2. Unscrew the shoulder, and raise the shoulder up to the top.

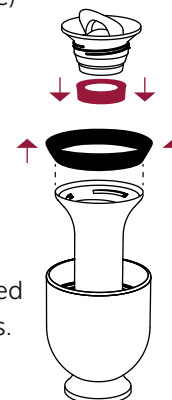


3. Lift and rotate out.

4. Turn eto upside down and unscrew the valve out. (anti-clockwise)

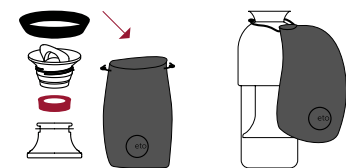


5. Separate the red and black seals.



6. Hand-wash all 6 parts in hot water and dry thoroughly. The small microfibre bag can be used to polish the metal parts.

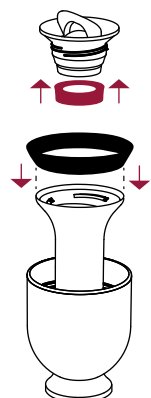
7. We then recommend storing these 4 parts in the bag between uses to help absorb any moisture.



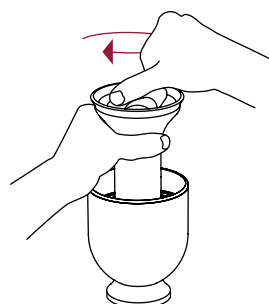
NB. Metal parts are not dishwasher safe.

Reassembly

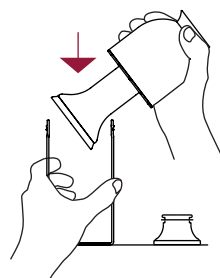
1. Replace the red seal and the black seal.



2. Screw in the valve securely (clockwise)



3. Guide the plunger in at a 45° angle.



4. Push inside (approx. 10cm) then screw on the shoulder and replace the stopper.

