

8

7

6

5

4

3

2

1

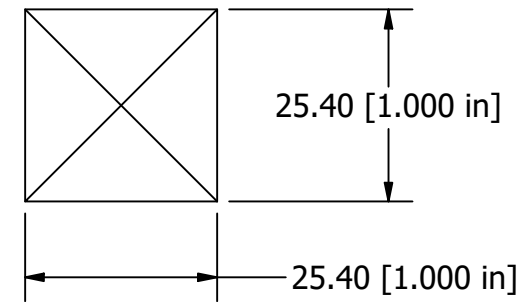
NOTES

- 1. PART MUST BE CLEAN, DRY AND FREE OF OIL, COOLANT AND ANY LUBRICANTS
- 2. FOR MISSING DIMENSIONS REFER TO 3D
- 3. UNLESS DIMENSIONED OTHERWISE \cup 0.2 ALL SURFACES
- 4. PRIMARY DIMENSIONS ARE IN MILLIMETERS, INCH DIMENSIONS ARE IN BRACKETS [XXX]

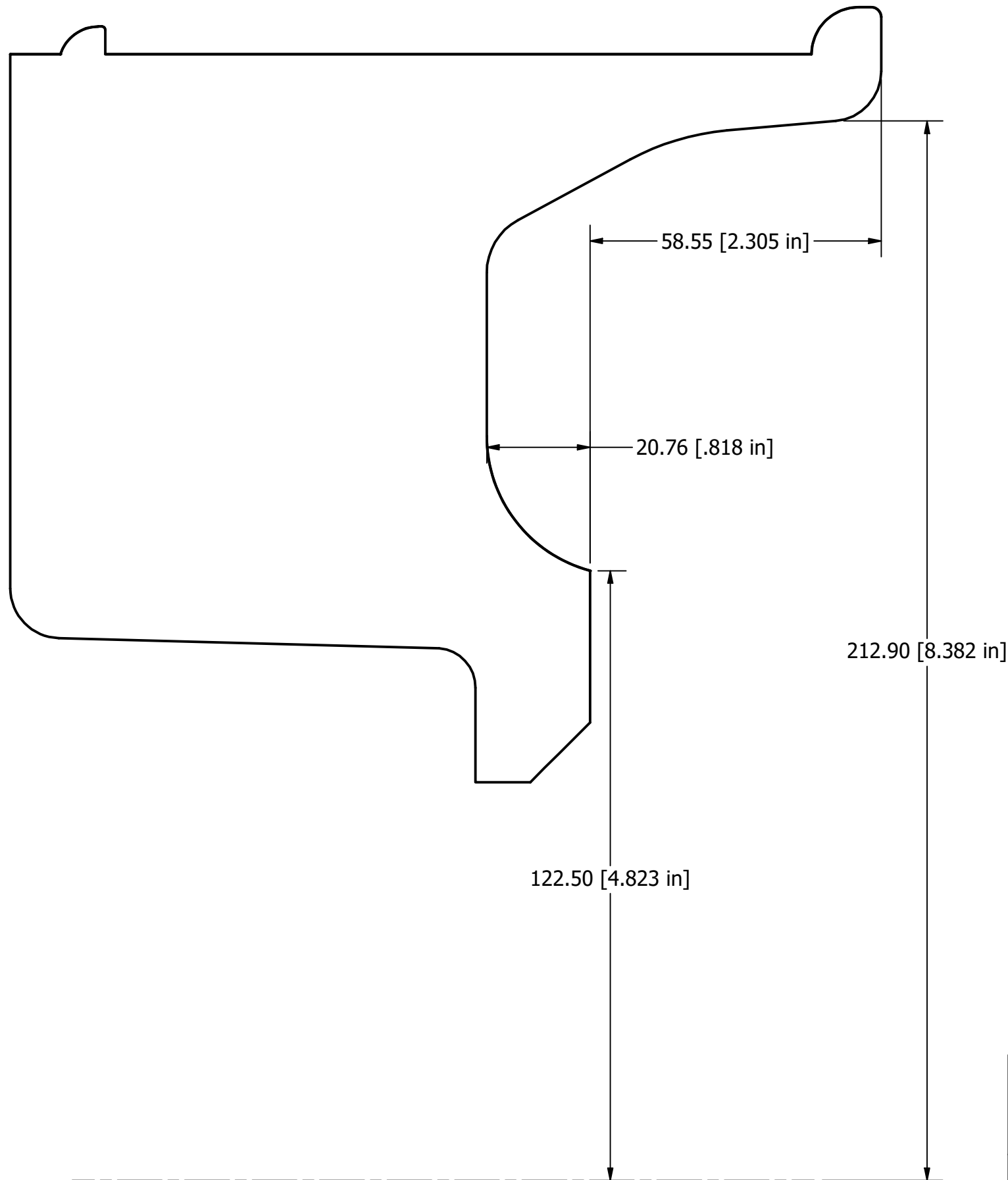
REVISIONS

REV	DESCRIPTION	DATE	APPROVED
A	RELEASE	8/27/2019	MMITCHELL

SCALE REFERENCE



- PRINT DRAWING AT 1:1 SCALE ON 11X17" PAPER SIZE
- DO NOT SCALE OR FIT TO SHEET
- CONFIRM SCALE REFERENCE MEASURES 1.00 INCHES AFTER PRINTING
- CUT OUT TEMPLATE AND GLUE TO CARDBOARD TO CHECK SUSPENSION/BRAKE CLEARANCE



MRW AGREEMENT APPROVED PRINT CONSTITUTES METHOD RACE WHEELS AGREEMENT EXTERNAL ENVELOPE DIMENSIONS, MATERIAL, SPECIFICATIONS AND INTERFACE DIMENSIONS TO MATING PARTS. VENDOR IS RESPONSIBLE FOR FUNCTIONALITY AND PERFORMANCE OF THE PRODUCT, WHICH IS NOT INCLUDED IN THIS APPROVAL AGREEMENT.	UNLESS OTHERWISE SPECIFIED DIMENSIONS ARE IN MILLIMETERS METRIC TOLERANCES X ± 0.5 X.X ± 0.2 X.XX ± 0.1 INCH TOLERANCES X/X ± 1/64 (.0156in) X.XX ± .010 X.XXX ± .005 ANGLE ± 0.5° INTERPRET GEOMETRIC TOLERANCE PER: ASME Y14.5M 1994	NAME	DATE	METHOD RACE WHEELS TITLE MR103, 17x6.5, -38
		DRAWN	M MITCHELL	
APPROVED			SIZE	
PROJECTION: FIRST ANGLE			A3	
PROPRIETARY AND CONFIDENTIAL THE INFORMATION CONTAINED IN THIS DRAWING IS THE SOLE PROPERTY OF METHOD RACE WHEELS. ANY REPRODUCTION IN PART OR AS A WHOLE WITHOUT THE WRITTEN PERMISSION OF METHOD RACE WHEELS IS PROHIBITED.		MATERIAL		DRAWING NO.
		FINISH		MR10376519338B
				REV
				A
				DO NOT SCALE DRAWING
				1 OF 1

8

7

6

5

4

3

2

1