

8

7

6

5

4

3

2

1

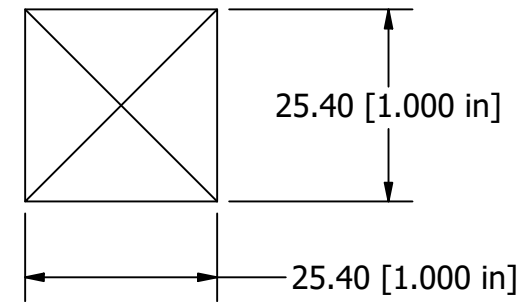
**NOTES**

- 1. PART MUST BE CLEAN, DRY AND FREE OF OIL, COOLANT AND ANY LUBRICANTS
- 2. FOR MISSING DIMENSIONS REFER TO 3D
- 3. UNLESS DIMENSIONED OTHERWISE  $\cup$  0.2 ALL SURFACES
- 4. PRIMARY DIMENSIONS ARE IN MILLIMETERS, INCH DIMENSIONS ARE IN BRACKETS [XXX]

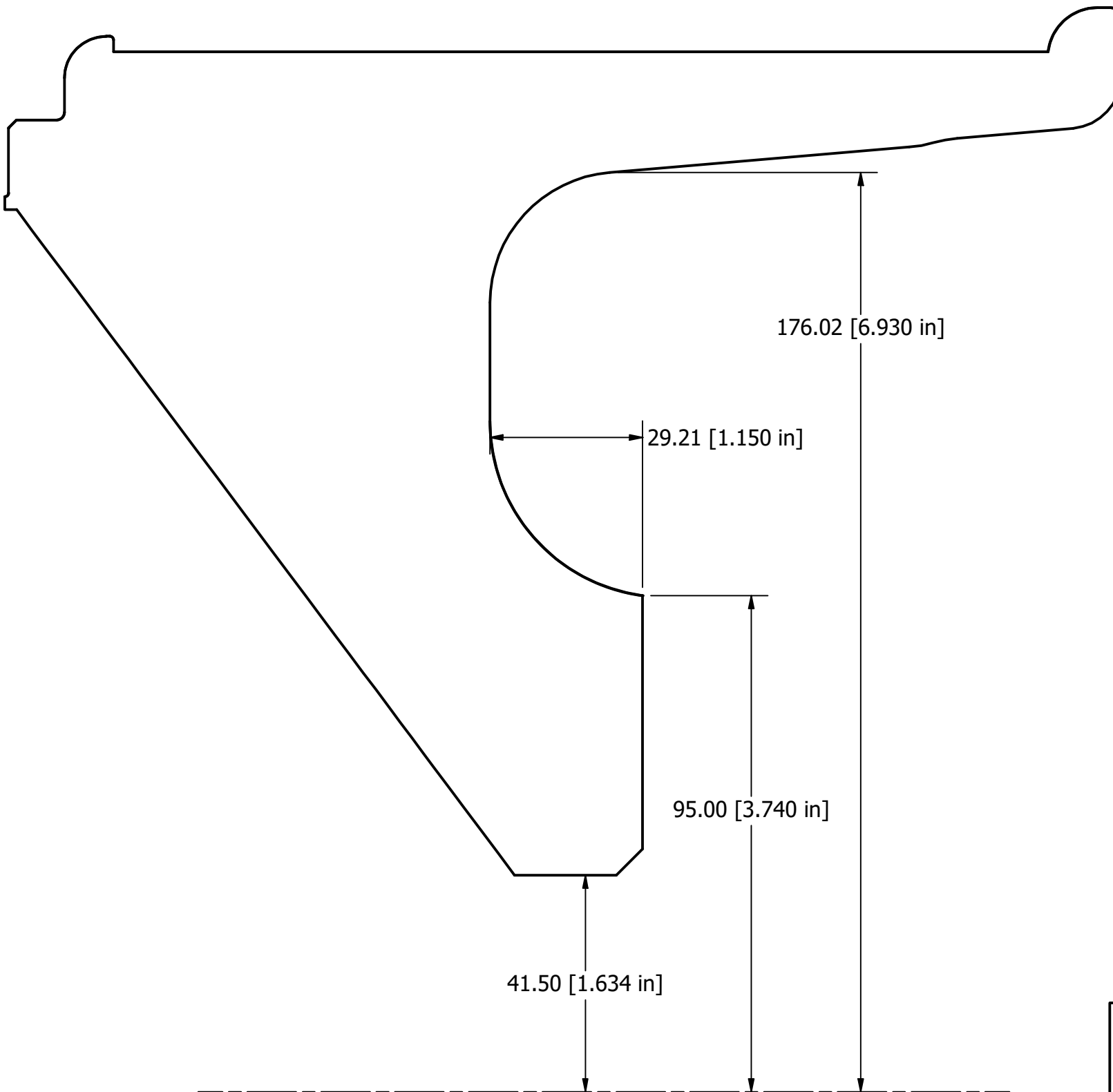
**REVISIONS**

REV	DESCRIPTION	DATE	APPROVED
A	RELEASE	6/24/2020	MMITCHELL

**SCALE REFERENCE**



- PRINT DRAWING AT 1:1 SCALE ON 11X17" PAPER SIZE
- DO NOT SCALE OR FIT TO SHEET
- CONFIRM SCALE REFERENCE MEASURES 1.00 INCHES AFTER PRINTING
- CUT OUT TEMPLATE AND GLUE TO CARDBOARD TO CHECK SUSPENSION/BRAKE CLEARANCE



<p><b>MRW AGREEMENT</b> APPROVED PRINT CONSTITUTES METHOD RACE WHEELS AGREEMENT EXTERNAL ENVELOPE DIMENSIONS, MATERIAL, SPECIFICATIONS AND INTERFACE DIMENSIONS TO MATING PARTS. VENDOR IS RESPONSIBLE FOR FUNCTIONALITY AND PERFORMANCE OF THE PRODUCT, WHICH IS NOT INCLUDED IN THIS APPROVAL AGREEMENT.</p> <p><b>PROPRIETARY AND CONFIDENTIAL</b> THE INFORMATION CONTAINED IN THIS DRAWING IS THE SOLE PROPERTY OF METHOD RACE WHEELS. ANY REPRODUCTION IN PART OR AS A WHOLE WITHOUT THE WRITTEN PERMISSION OF METHOD RACE WHEELS IS PROHIBITED.</p>	<p>UNLESS OTHERWISE SPECIFIED DIMENSIONS ARE IN MILLIMETERS</p> <p><b>METRIC TOLERANCES</b> X ± 0.5 X.X ± 0.2 X.XX ± 0.1</p> <p><b>INCH TOLERANCES</b> X/X ± 1/64 (.0156in) X.XX ± .010 X.XXX ± .005</p> <p>ANGLE ± 0.5° INTERPRET GEOMETRIC TOLERANCE PER: ASME Y14.5M 1994</p>	NAME	DATE	<p><b>METHOD RACE WHEELS</b></p> <p>TITLE MR103, 15X8, -24</p>
		DRAWN	MMITCHELL	
APPROVED		PROJECTION: FIRST ANGLE	SIZE	<p>DRAWING NO. MR103580XX24B</p> <p>REV A</p>
		MATERIAL	A3	
FINISH		DO NOT SCALE DRAWING		1 OF 1

8

7

6

5

4

3

2

1