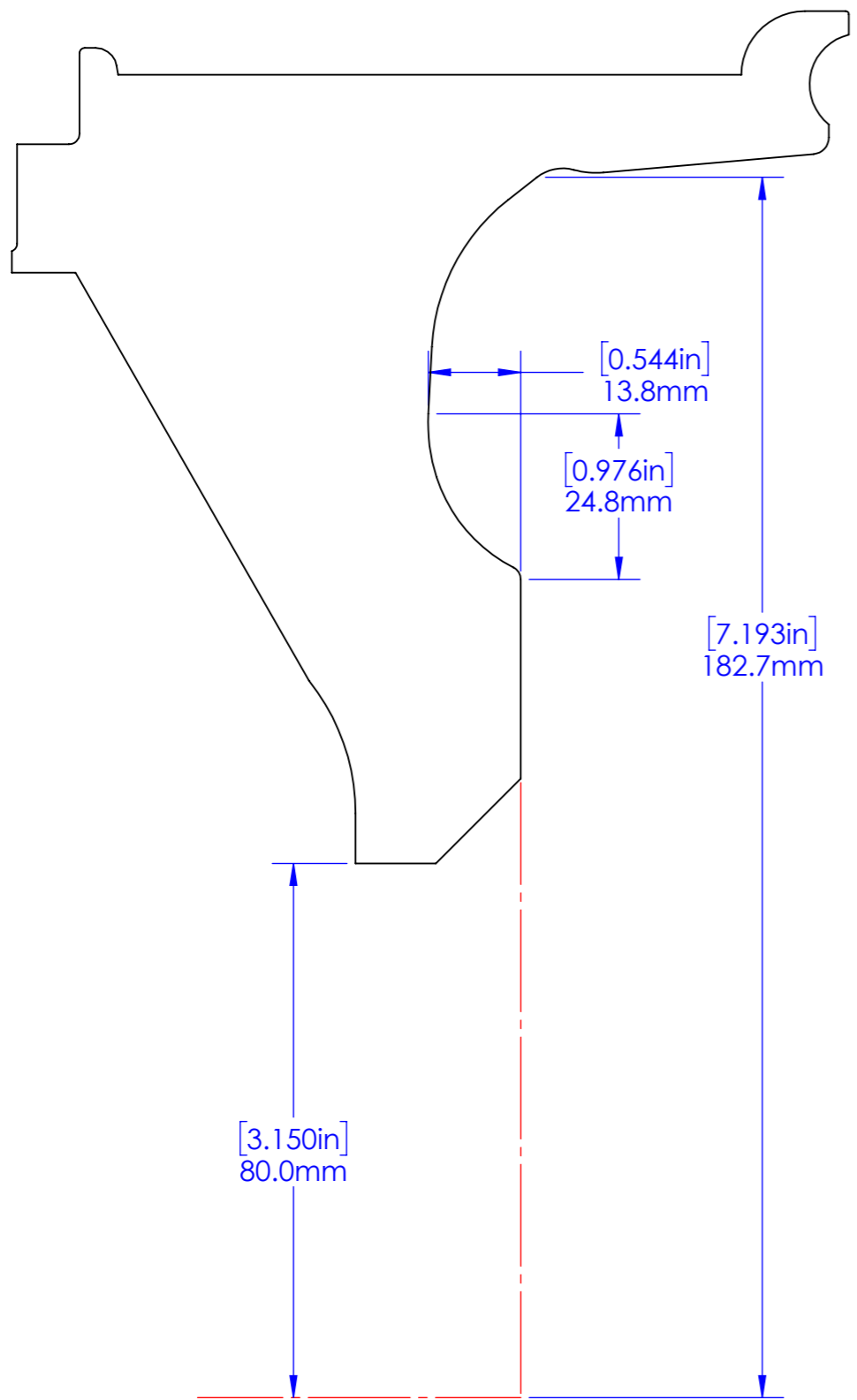
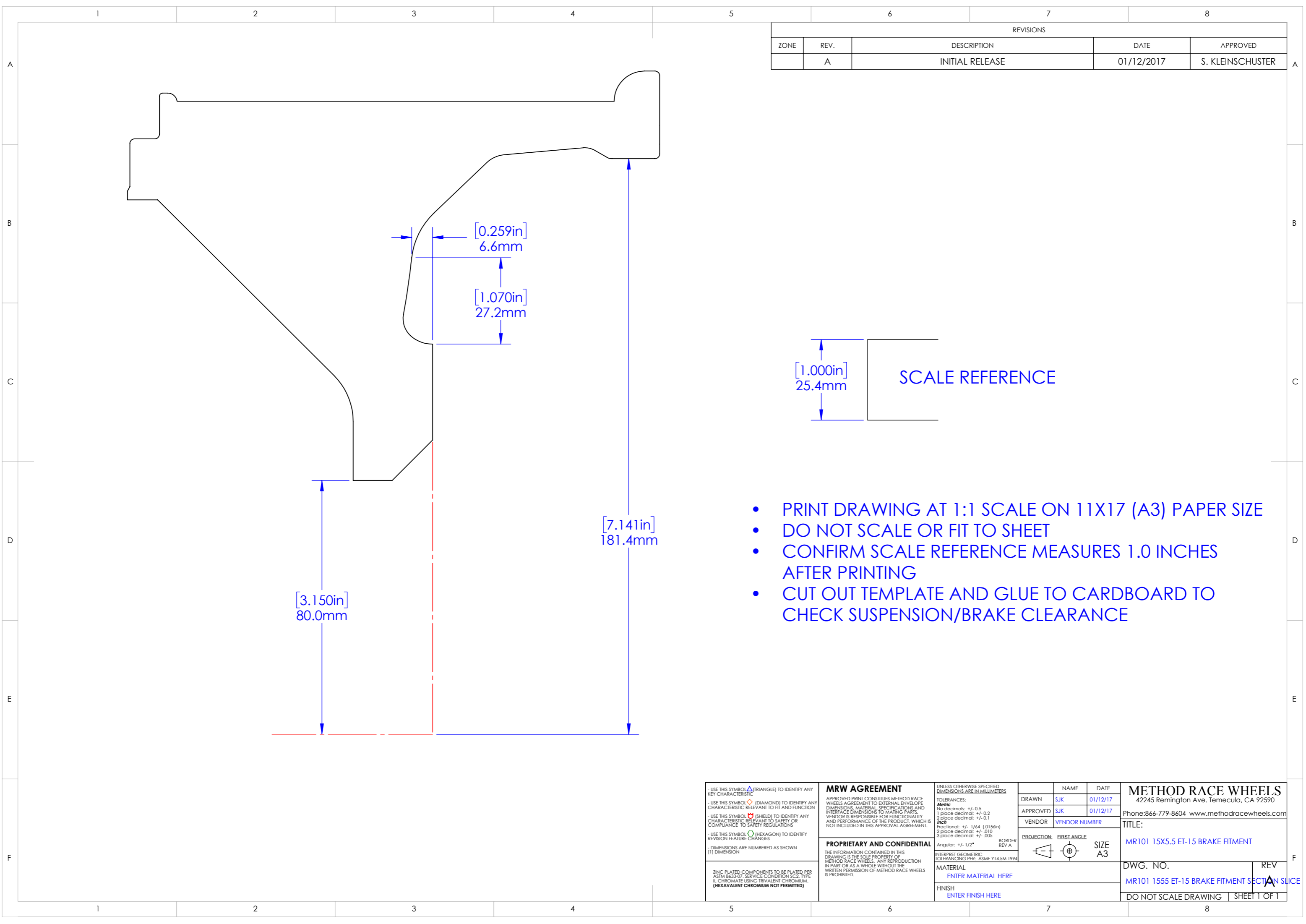


REVISIONS				
ZONE	REV.	DESCRIPTION	DATE	APPROVED
	A	INITIAL RELEASE	01/12/2017	S. KLEINSCHUSTER



- PRINT DRAWING AT 1:1 SCALE ON 11X17 (A3) PAPER SIZE
- DO NOT SCALE OR FIT TO SHEET
- CONFIRM SCALE REFERENCE MEASURES 1.0 INCHES AFTER PRINTING
- CUT OUT TEMPLATE AND GLUE TO CARDBOARD TO CHECK SUSPENSION/BRAKE CLEARANCE

<p>- USE THIS SYMBOL (TRIANGLE) TO IDENTIFY ANY KEY CHARACTERISTIC</p> <p>- USE THIS SYMBOL (DIAMOND) TO IDENTIFY ANY CHARACTERISTIC RELEVANT TO FIT AND FUNCTION</p> <p>- USE THIS SYMBOL (SHIELD) TO IDENTIFY ANY CHARACTERISTIC RELEVANT TO SAFETY OR COMPLIANCE TO SAFETY REGULATIONS</p> <p>- USE THIS SYMBOL (HEXAGON) TO IDENTIFY REVISION FEATURE CHANGES</p> <p>- DIMENSIONS ARE NUMBERED AS SHOWN [1] DIMENSION</p> <p>ZINC PLATED COMPONENTS TO BE PLATED PER ASTM B633-07, SERVICE CONDITION SC2, TYPE II, CHROMATE USING TRIVALENT CHROMIUM. (HEXAVALENT CHROMIUM NOT PERMITTED)</p>	<p>MRW AGREEMENT</p> <p>APPROVED PRINT CONSTITUTES METHOD RACE WHEELS AGREEMENT TO EXTERNAL ENVELOPE DIMENSIONS, MATERIAL SPECIFICATIONS AND INTERFACE DIMENSIONS TO MATING PARTS. VENDOR IS RESPONSIBLE FOR FUNCTIONALITY AND PERFORMANCE OF THE PRODUCT, WHICH IS NOT INCLUDED IN THIS APPROVAL AGREEMENT.</p>	<p>UNLESS OTHERWISE SPECIFIED DIMENSIONS ARE IN MILLIMETERS</p> <p>TOLERANCES:</p> <p><i>Metric</i></p> <p>No decimals: +/- 0.5</p> <p>1 place decimal: +/- 0.2</p> <p>2 place decimal: +/- 0.1</p> <p><i>Inch</i></p> <p>Fractional: +/- 1/64 (0.156in)</p> <p>2 place decimal: +/- .010</p> <p>3 place decimal: +/- .005</p> <p>Angular: +/- 1/2°</p> <p>BORDER REV A</p>	<table border="1"> <tr> <td></td> <td>NAME</td> <td>DATE</td> </tr> <tr> <td>DRAWN</td> <td>SJK</td> <td>01/12/17</td> </tr> <tr> <td>APPROVED</td> <td>SJK</td> <td>01/12/17</td> </tr> <tr> <td>VENDOR</td> <td colspan="2">VENDOR NUMBER</td> </tr> </table>		NAME	DATE	DRAWN	SJK	01/12/17	APPROVED	SJK	01/12/17	VENDOR	VENDOR NUMBER		<p>METHOD RACE WHEELS</p> <p>42245 Remington Ave. Temecula, CA 92590</p> <p>Phone:866-779-8604 www.methodracewheels.com</p>
		NAME	DATE													
	DRAWN	SJK	01/12/17													
	APPROVED	SJK	01/12/17													
VENDOR	VENDOR NUMBER															
<p>PROPRIETARY AND CONFIDENTIAL</p> <p>THE INFORMATION CONTAINED IN THIS DRAWING IS THE SOLE PROPERTY OF METHOD RACE WHEELS. ANY REPRODUCTION IN PART OR AS A WHOLE WITHOUT THE WRITTEN PERMISSION OF METHOD RACE WHEELS IS PROHIBITED.</p>	<p>INTERPRET GEOMETRIC TOLERANCING PER: ASME Y14.5M 1994</p>	<p>PROJECTION: FIRST ANGLE</p> <p>SIZE A3</p>	<p>TITLE:</p> <p>MR101 15X4.5 ET-25 BRAKE FITMENT</p>													
	<p>MATERIAL</p> <p>ENTER MATERIAL HERE</p>		<p>DWG. NO.</p> <p>MR101 1545 ET-25 BRAKE FITMENT SECTION SLICE</p>	<p>REV</p> <p>A</p>												
	<p>FINISH</p> <p>ENTER FINISH HERE</p>		<p>DO NOT SCALE DRAWING</p> <p>SHEET 1 OF 1</p>													

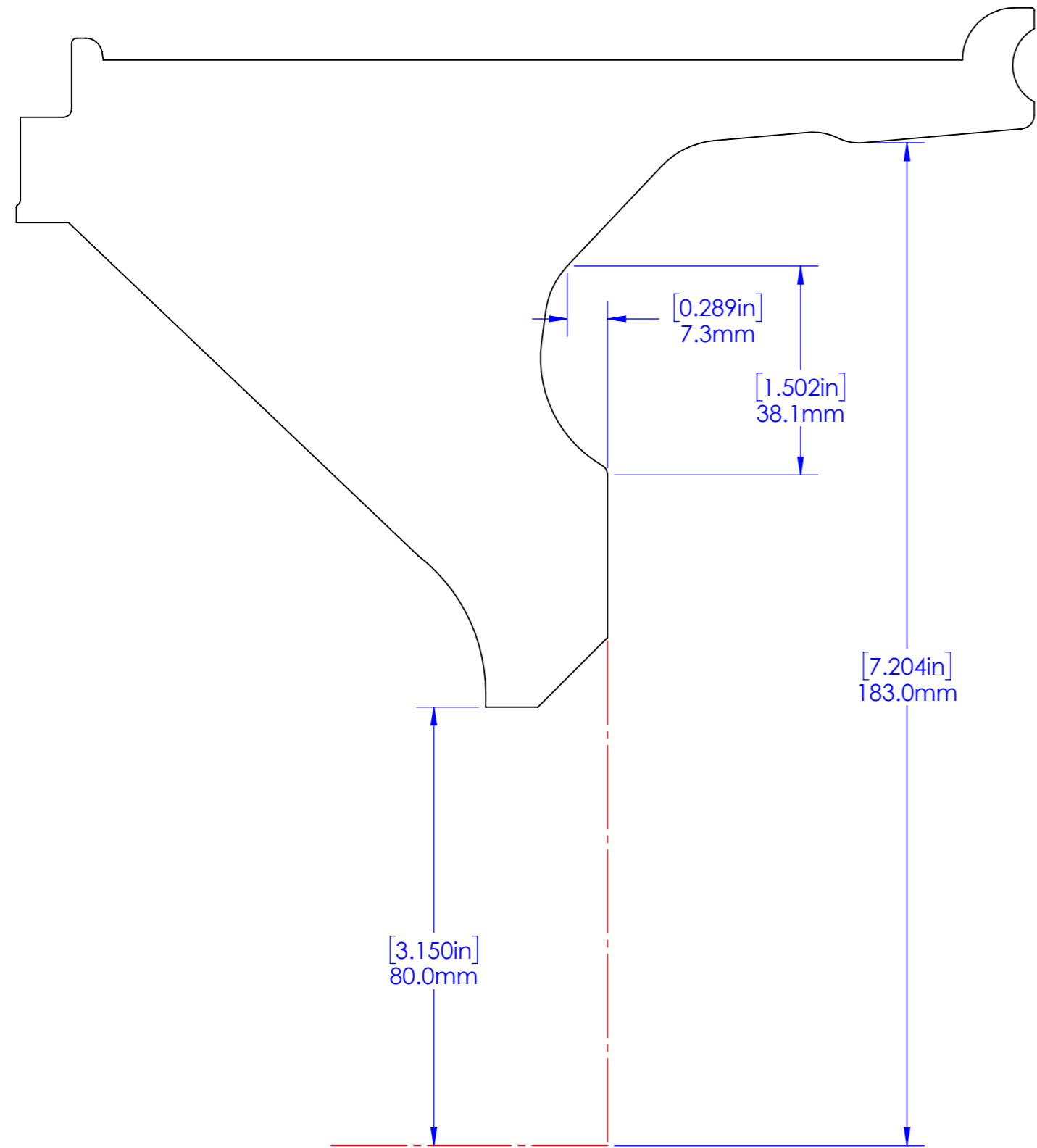


REVISIONS				
ZONE	REV.	DESCRIPTION	DATE	APPROVED
	A	INITIAL RELEASE	01/12/2017	S. KLEINSCHUSTER

- PRINT DRAWING AT 1:1 SCALE ON 11X17 (A3) PAPER SIZE
- DO NOT SCALE OR FIT TO SHEET
- CONFIRM SCALE REFERENCE MEASURES 1.0 INCHES AFTER PRINTING
- CUT OUT TEMPLATE AND GLUE TO CARDBOARD TO CHECK SUSPENSION/BRAKE CLEARANCE

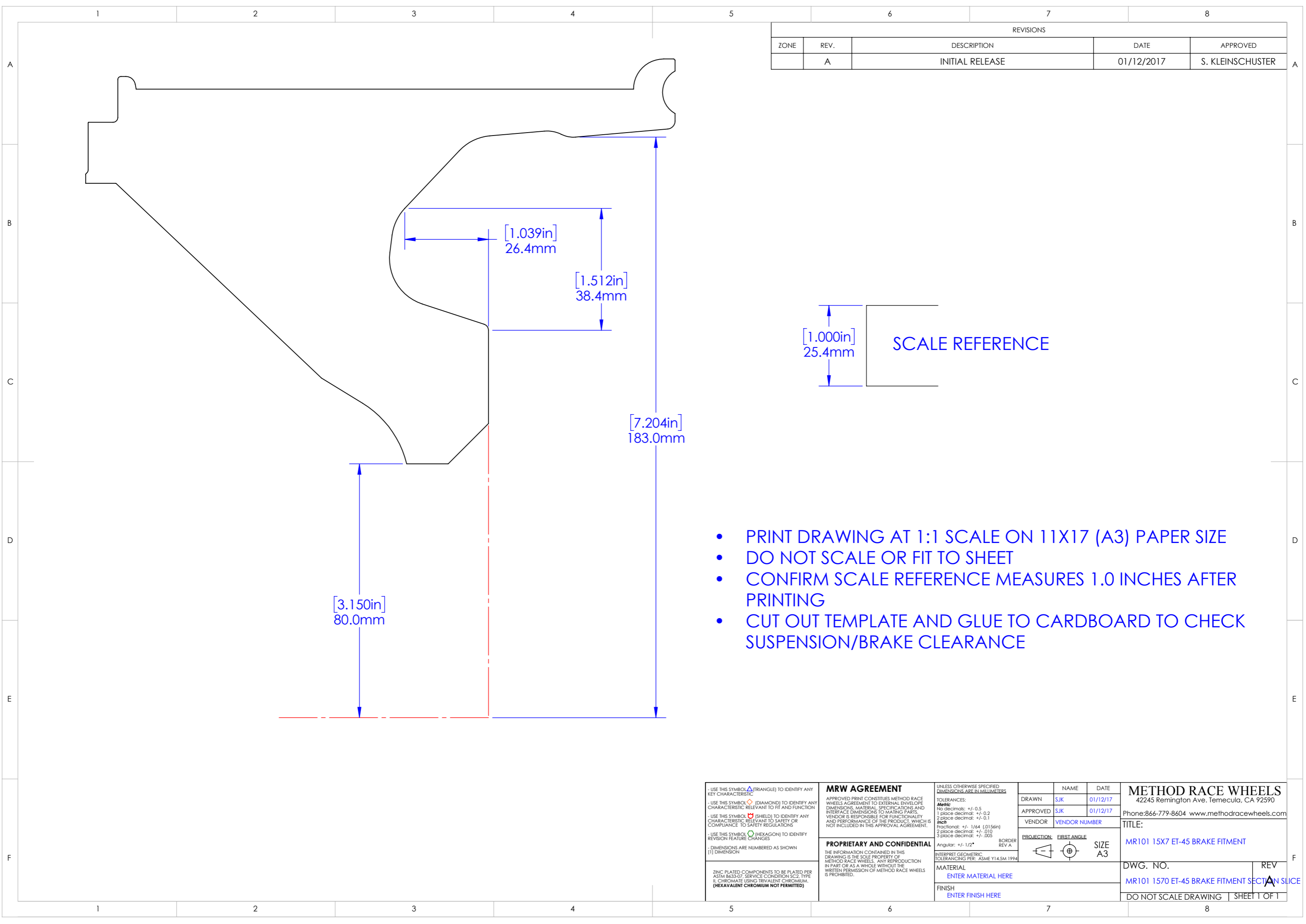
- USE THIS SYMBOL (TRIANGLE) TO IDENTIFY ANY KEY CHARACTERISTIC - USE THIS SYMBOL (DIAMOND) TO IDENTIFY ANY CHARACTERISTIC RELEVANT TO FIT AND FUNCTION - USE THIS SYMBOL (SHIELD) TO IDENTIFY ANY CHARACTERISTIC RELEVANT TO SAFETY OR COMPLIANCE TO SAFETY REGULATIONS - USE THIS SYMBOL (HEXAGON) TO IDENTIFY REVISION FEATURE CHANGES - DIMENSIONS ARE NUMBERED AS SHOWN [1] DIMENSION	MRW AGREEMENT APPROVED PRINT CONSTITUTES METHOD RACE WHEELS AGREEMENT TO EXTERNAL ENVELOPE DIMENSIONS, MATERIAL SPECIFICATIONS AND INTERFACE DIMENSIONS TO MATING PARTS. VENDOR IS RESPONSIBLE FOR FUNCTIONALITY AND PERFORMANCE OF THE PRODUCT, WHICH IS NOT INCLUDED IN THIS APPROVAL AGREEMENT.	UNLESS OTHERWISE SPECIFIED DIMENSIONS ARE IN MILLIMETERS TOLERANCES: <i>Metric</i> No decimals: +/- 0.5 1 place decimal: +/- 0.2 2 place decimal: +/- 0.1 <i>Inch</i> Fractional: +/- 1/64 (0.156in) 2 place decimal: +/- .010 3 place decimal: +/- .005 Angular: +/- 1/2° BORDER REV A	NAME: SJK DATE: 01/12/17 APPROVED: SJK DATE: 01/12/17 VENDOR: VENDOR NUMBER	METHOD RACE WHEELS 42245 Remington Ave. Temecula, CA 92590 Phone: 866-779-8604 www.methodracewheels.com
	PROPRIETARY AND CONFIDENTIAL THE INFORMATION CONTAINED IN THIS DRAWING IS THE SOLE PROPERTY OF METHOD RACE WHEELS. ANY REPRODUCTION IN PART OR AS A WHOLE WITHOUT THE WRITTEN PERMISSION OF METHOD RACE WHEELS IS PROHIBITED.	INTERPRET GEOMETRIC TOLERANCING PER: ASME Y14.5M 1994	PROJECTION: FIRST ANGLE SIZE A3	TITLE: MR101 15X5.5 ET-15 BRAKE FITMENT
	ZINC PLATED COMPONENTS TO BE PLATED PER ASTM B633-07, SERVICE CONDITION SC2, TYPE II, CHROMATE USING TRIVALENT CHROMIUM. (HEXAVALENT CHROMIUM NOT PERMITTED)	MATERIAL ENTER MATERIAL HERE FINISH ENTER FINISH HERE	DWG. NO. MR101 1555 ET-15 BRAKE FITMENT SECTION SLICE	REV A
	DO NOT SCALE DRAWING		SHEET 1 OF 1	

REVISIONS				
ZONE	REV.	DESCRIPTION	DATE	APPROVED
	A	INITIAL RELEASE	01/12/2017	S. KLEINSCHUSTER



- PRINT DRAWING AT 1:1 SCALE ON 11X17 (A3) PAPER SIZE
- DO NOT SCALE OR FIT TO SHEET
- CONFIRM SCALE REFERENCE MEASURES 1.0 INCHES AFTER PRINTING
- CUT OUT TEMPLATE AND GLUE TO CARDBOARD TO CHECK SUSPENSION/BRAKE CLEARANCE

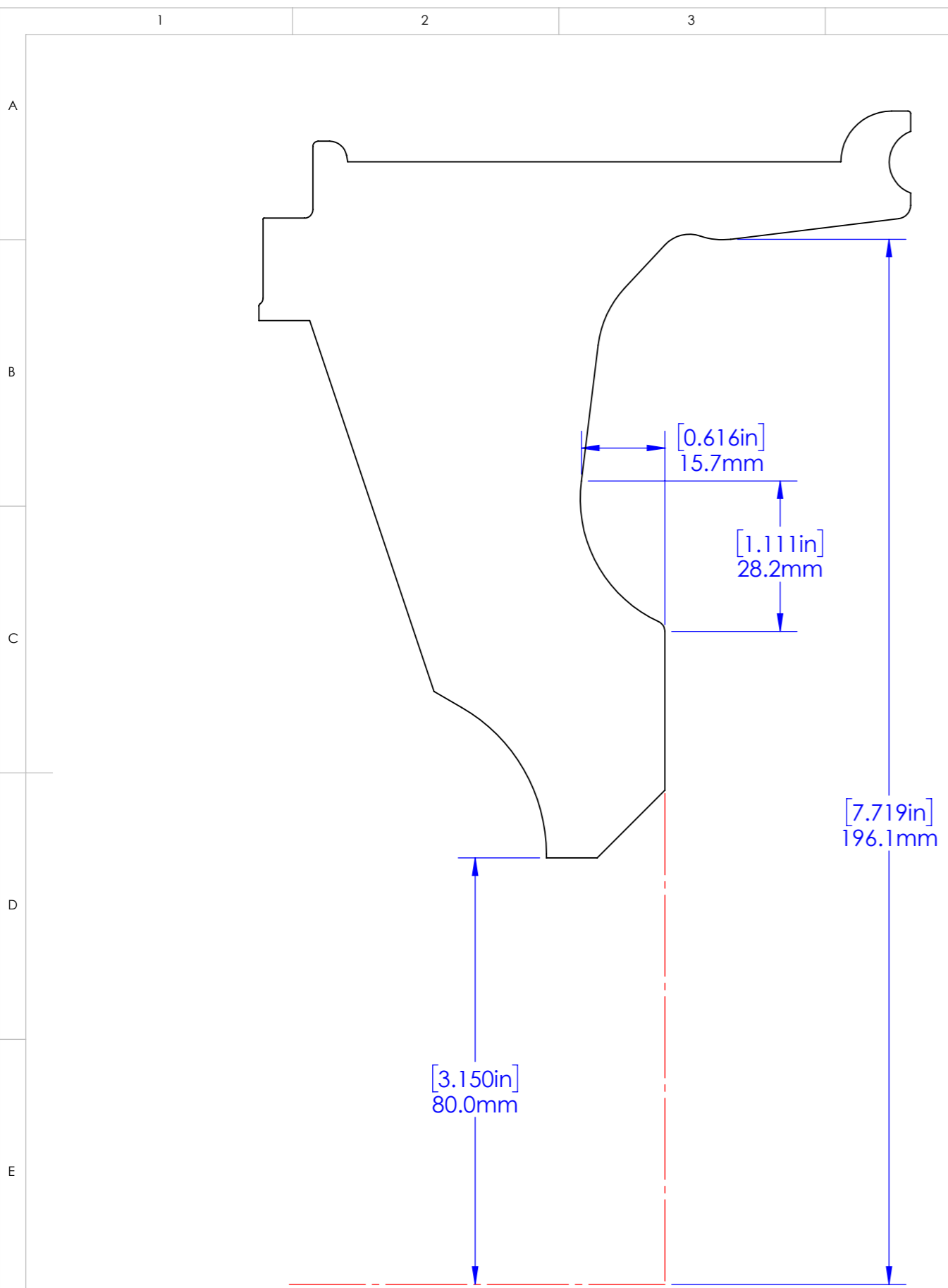
<p>- USE THIS SYMBOL (TRIANGLE) TO IDENTIFY ANY KEY CHARACTERISTIC</p> <p>- USE THIS SYMBOL (DIAMOND) TO IDENTIFY ANY CHARACTERISTIC RELEVANT TO FIT AND FUNCTION</p> <p>- USE THIS SYMBOL (SHIELD) TO IDENTIFY ANY CHARACTERISTIC RELEVANT TO SAFETY OR COMPLIANCE TO SAFETY REGULATIONS</p> <p>- USE THIS SYMBOL (HEXAGON) TO IDENTIFY REVISION FEATURE CHANGES</p> <p>- DIMENSIONS ARE NUMBERED AS SHOWN [1] DIMENSION</p> <p>ZINC PLATED COMPONENTS TO BE PLATED PER ASTM B633-07, SERVICE CONDITION SC2, TYPE II, CHROMATE USING TRIVALENT CHROMIUM. (HEXAVALENT CHROMIUM NOT PERMITTED)</p>	<p>MRW AGREEMENT</p> <p>APPROVED PRINT CONSTITUTES METHOD RACE WHEELS AGREEMENT TO EXTERNAL ENVELOPE DIMENSIONS, MATERIAL SPECIFICATIONS AND INTERFACE DIMENSIONS TO MATING PARTS. VENDOR IS RESPONSIBLE FOR FUNCTIONALITY AND PERFORMANCE OF THE PRODUCT, WHICH IS NOT INCLUDED IN THIS APPROVAL AGREEMENT.</p>	<p>UNLESS OTHERWISE SPECIFIED DIMENSIONS ARE IN MILLIMETERS</p> <p>TOLERANCES:</p> <p><i>Metric</i></p> <p>No decimals: +/- 0.5</p> <p>1 place decimal: +/- 0.2</p> <p>2 place decimal: +/- 0.1</p> <p><i>Inch</i></p> <p>Fractional: +/- 1/64 (0.156in)</p> <p>2 place decimal: +/- .010</p> <p>3 place decimal: +/- .005</p> <p>Angular: +/- 1/2°</p> <p>BORDER REV A</p>	<table border="1"> <tr> <td></td> <td>NAME</td> <td>DATE</td> </tr> <tr> <td>DRAWN</td> <td>SJK</td> <td>01/12/17</td> </tr> <tr> <td>APPROVED</td> <td>SJK</td> <td>01/12/17</td> </tr> <tr> <td>VENDOR</td> <td colspan="2">VENDOR NUMBER</td> </tr> </table>		NAME	DATE	DRAWN	SJK	01/12/17	APPROVED	SJK	01/12/17	VENDOR	VENDOR NUMBER		<p>METHOD RACE WHEELS</p> <p>42245 Remington Ave. Temecula, CA 92590</p> <p>Phone:866-779-8604 www.methodracewheels.com</p>
		NAME	DATE													
	DRAWN	SJK	01/12/17													
	APPROVED	SJK	01/12/17													
VENDOR	VENDOR NUMBER															
<p>PROPRIETARY AND CONFIDENTIAL</p> <p>THE INFORMATION CONTAINED IN THIS DRAWING IS THE SOLE PROPERTY OF METHOD RACE WHEELS. ANY REPRODUCTION IN PART OR AS A WHOLE WITHOUT THE WRITTEN PERMISSION OF METHOD RACE WHEELS IS PROHIBITED.</p>	<p>INTERPRET GEOMETRIC TOLERANCING PER: ASME Y14.5M 1994</p>	<p>PROJECTION: FIRST ANGLE</p> <p>SIZE A3</p>	<p>TITLE:</p> <p>MR101 15X7 ET-25 BRAKE FITMENT</p>	<p>DWG. NO.</p> <p>MR101 1570 ET-25 BRAKE FITMENT</p>												
		<p>MATERIAL</p> <p>ENTER MATERIAL HERE</p>	<p>DO NOT SCALE DRAWING</p>	<p>REV</p> <p>SHEET 1 OF 1</p>												
		<p>FINISH</p> <p>ENTER FINISH HERE</p>		<p>REV</p> <p>SHEET 1 OF 1</p>												



REVISIONS				
ZONE	REV.	DESCRIPTION	DATE	APPROVED
	A	INITIAL RELEASE	01/12/2017	S. KLEINSCHUSTER

- PRINT DRAWING AT 1:1 SCALE ON 11X17 (A3) PAPER SIZE
- DO NOT SCALE OR FIT TO SHEET
- CONFIRM SCALE REFERENCE MEASURES 1.0 INCHES AFTER PRINTING
- CUT OUT TEMPLATE AND GLUE TO CARDBOARD TO CHECK SUSPENSION/BRAKE CLEARANCE

- USE THIS SYMBOL (TRIANGLE) TO IDENTIFY ANY KEY CHARACTERISTIC - USE THIS SYMBOL (DIAMOND) TO IDENTIFY ANY CHARACTERISTIC RELEVANT TO FIT AND FUNCTION - USE THIS SYMBOL (SHIELD) TO IDENTIFY ANY CHARACTERISTIC RELEVANT TO SAFETY OR COMPLIANCE TO SAFETY REGULATIONS - USE THIS SYMBOL (HEXAGON) TO IDENTIFY REVISION FEATURE CHANGES - DIMENSIONS ARE NUMBERED AS SHOWN [1] DIMENSION ZINC PLATED COMPONENTS TO BE PLATED PER ASTM B633-07, SERVICE CONDITION SC2, TYPE II, CHROMATE USING TRIVALENT CHROMIUM. (HEXAVALENT CHROMIUM NOT PERMITTED)	MRW AGREEMENT APPROVED PRINT CONSTITUTES METHOD RACE WHEELS AGREEMENT TO EXTERNAL ENVELOPE DIMENSIONS, MATERIAL SPECIFICATIONS AND INTERFACE DIMENSIONS TO MATING PARTS. VENDOR IS RESPONSIBLE FOR FUNCTIONALITY AND PERFORMANCE OF THE PRODUCT, WHICH IS NOT INCLUDED IN THIS APPROVAL AGREEMENT.	UNLESS OTHERWISE SPECIFIED DIMENSIONS ARE IN MILLIMETERS TOLERANCES: <i>Metric</i> No decimals: +/- 0.5 1 place decimal: +/- 0.2 2 place decimal: +/- 0.1 <i>Inch</i> Fractional: +/- 1/64 (0.156in) 2 place decimal: +/- .010 3 place decimal: +/- .005 Angular: +/- 1/2° BORDER REV A	NAME: SJK DATE: 01/12/17 APPROVED: SJK DATE: 01/12/17 VENDOR: VENDOR NUMBER	METHOD RACE WHEELS 42245 Remington Ave. Temecula, CA 92590 Phone: 866-779-8604 www.methodracewheels.com	
	PROPRIETARY AND CONFIDENTIAL THE INFORMATION CONTAINED IN THIS DRAWING IS THE SOLE PROPERTY OF METHOD RACE WHEELS. ANY REPRODUCTION IN PART OR AS A WHOLE WITHOUT THE WRITTEN PERMISSION OF METHOD RACE WHEELS IS PROHIBITED.	PROJECTION: FIRST ANGLE SIZE A3	TITLE: MR101 15X7 ET-45 BRAKE FITMENT	DWG. NO. MR101 1570 ET-45 BRAKE FITMENT SECTION SLICE	REV A
	MATERIAL ENTER MATERIAL HERE	FINISH ENTER FINISH HERE	DO NOT SCALE DRAWING	SHEET 1 OF 1	

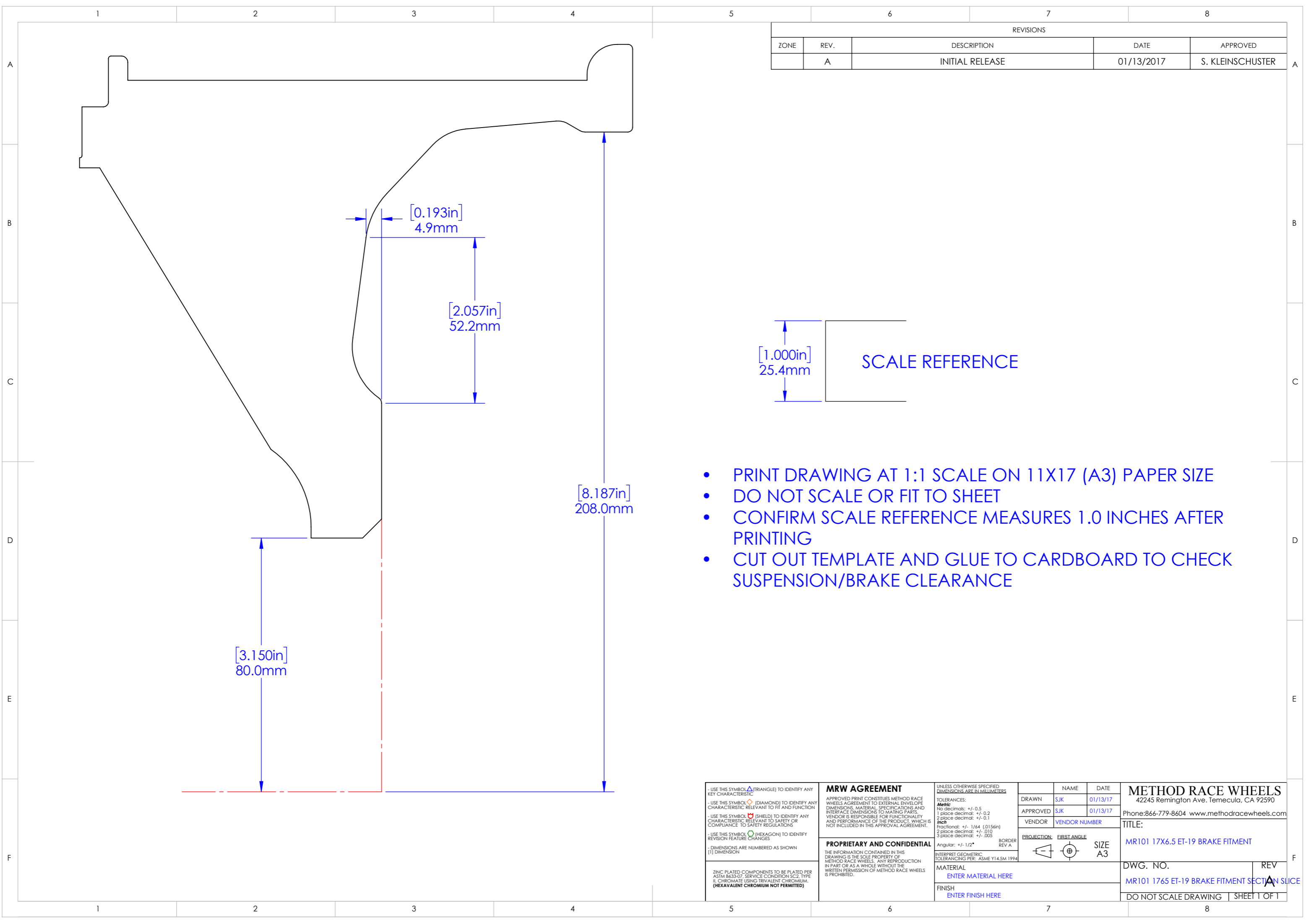


REVISIONS				
ZONE	REV.	DESCRIPTION	DATE	APPROVED
	A	INITIAL RELEASE	01/12/2017	S. KLEINSCHUSTER



- PRINT DRAWING AT 1:1 SCALE ON 11X17 (A3) PAPER SIZE
- DO NOT SCALE OR FIT TO SHEET
- CONFIRM SCALE REFERENCE MEASURES 1.0 INCHES AFTER PRINTING
- CUT OUT TEMPLATE AND GLUE TO CARBOARD TO CHECK SUSPENSION/BRAKE CLEARANCE

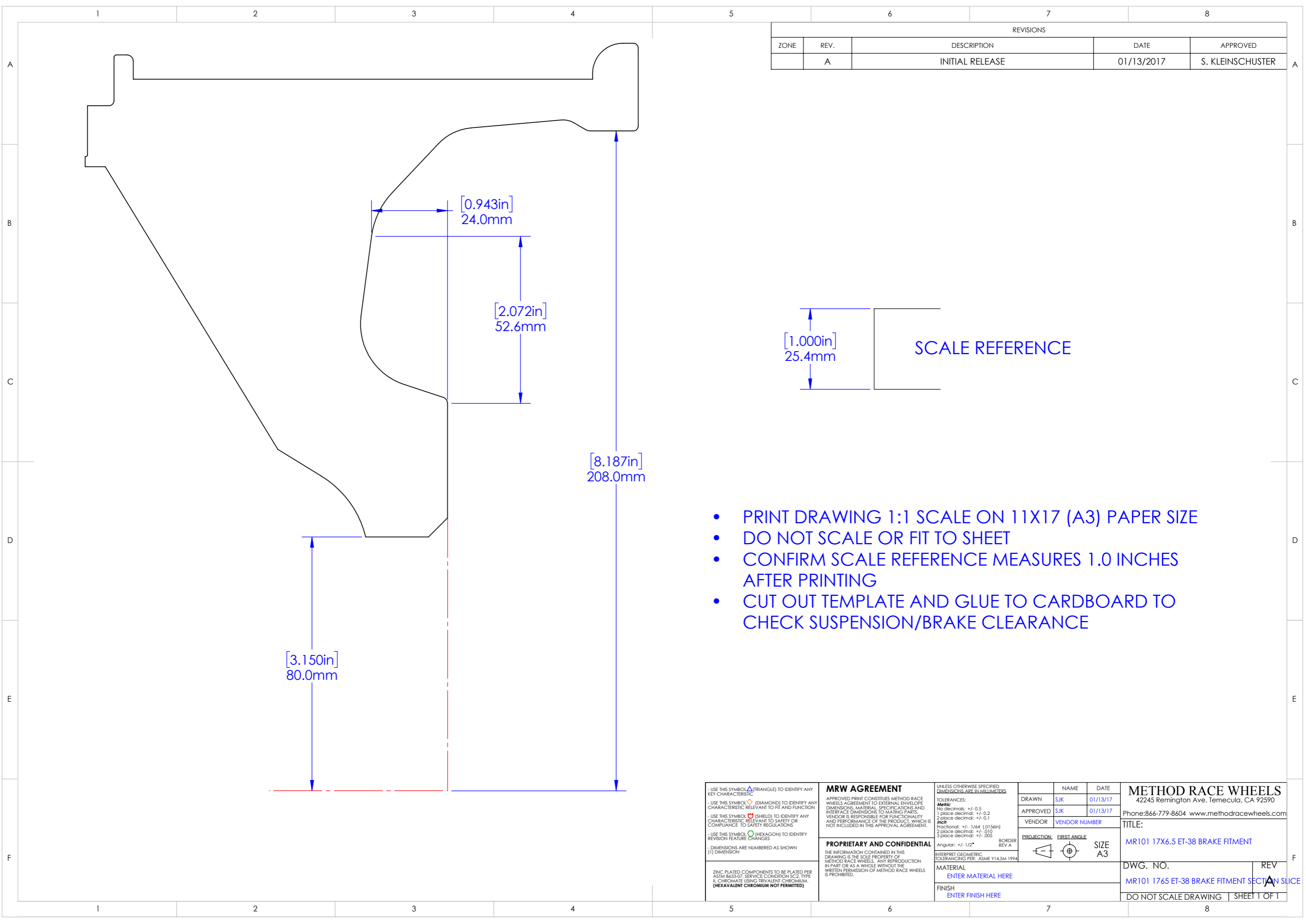
- USE THIS SYMBOL \triangle (TRIANGLE) TO IDENTIFY ANY KEY CHARACTERISTIC - USE THIS SYMBOL \diamond (DIAMOND) TO IDENTIFY ANY CHARACTERISTIC RELEVANT TO FIT AND FUNCTION - USE THIS SYMBOL \square (SHIELD) TO IDENTIFY ANY CHARACTERISTIC RELEVANT TO SAFETY OR COMPLIANCE TO SAFETY REGULATIONS - USE THIS SYMBOL \hexagon (HEXAGON) TO IDENTIFY REVISION FEATURE CHANGES - DIMENSIONS ARE NUMBERED AS SHOWN [1] DIMENSION ZINC PLATED COMPONENTS TO BE PLATED PER ASTM B633-07, SERVICE CONDITION SC2, TYPE II, CHROMATE USING TRIVALENT CHROMIUM. (HEXAVALENT CHROMIUM NOT PERMITTED)	MRW AGREEMENT APPROVED PRINT CONSTITUTES METHOD RACE WHEELS AGREEMENT TO EXTERNAL ENVELOPE DIMENSIONS, MATERIAL SPECIFICATIONS AND INTERFACE DIMENSIONS TO MATING PARTS. VENDOR IS RESPONSIBLE FOR FUNCTIONALITY AND PERFORMANCE OF THE PRODUCT, WHICH IS NOT INCLUDED IN THIS APPROVAL AGREEMENT.	UNLESS OTHERWISE SPECIFIED DIMENSIONS ARE IN MILLIMETERS TOLERANCES: <i>Metric</i> No decimals: +/- 0.5 1 place decimal: +/- 0.2 2 place decimal: +/- 0.1 <i>Inch</i> Fractional: +/- 1/64 (0.156in) 2 place decimal: +/- .010 3 place decimal: +/- .005 Angular: +/- 1/2° BORDER REV A	NAME SJK DATE 01/12/17	METHOD RACE WHEELS 42245 Remington Ave. Temecula, CA 92590 Phone:866-779-8604 www.methodracewheels.com TITLE: MR101 16X4.5 ET-25 BRAKE FITMENT	
	PROPRIETARY AND CONFIDENTIAL THE INFORMATION CONTAINED IN THIS DRAWING IS THE SOLE PROPERTY OF METHOD RACE WHEELS. ANY REPRODUCTION IN PART OR AS A WHOLE WITHOUT THE WRITTEN PERMISSION OF METHOD RACE WHEELS IS PROHIBITED.	INTERPRET GEOMETRIC TOLERANCING PER: ASME Y14.5M 1994 MATERIAL ENTER MATERIAL HERE FINISH ENTER FINISH HERE	VENDOR SJK VENDOR NUMBER 01/12/17		PROJECTION: FIRST ANGLE SIZE A3
	DWG. NO. MR101 1645 ET-25 BRAKE FITMENT SECTION SLICE	REV A	DO NOT SCALE DRAWING SHEET 1 OF 1		



REVISIONS				
ZONE	REV.	DESCRIPTION	DATE	APPROVED
	A	INITIAL RELEASE	01/13/2017	S. KLEINSCHUSTER

- PRINT DRAWING AT 1:1 SCALE ON 11X17 (A3) PAPER SIZE
- DO NOT SCALE OR FIT TO SHEET
- CONFIRM SCALE REFERENCE MEASURES 1.0 INCHES AFTER PRINTING
- CUT OUT TEMPLATE AND GLUE TO CARDBOARD TO CHECK SUSPENSION/BRAKE CLEARANCE

<p>- USE THIS SYMBOL (TRIANGLE) TO IDENTIFY ANY KEY CHARACTERISTIC</p> <p>- USE THIS SYMBOL (DIAMOND) TO IDENTIFY ANY CHARACTERISTIC RELEVANT TO FIT AND FUNCTION</p> <p>- USE THIS SYMBOL (SHIELD) TO IDENTIFY ANY CHARACTERISTIC RELEVANT TO SAFETY OR COMPLIANCE TO SAFETY REGULATIONS</p> <p>- USE THIS SYMBOL (HEXAGON) TO IDENTIFY REVISION FEATURE CHANGES</p> <p>- DIMENSIONS ARE NUMBERED AS SHOWN [1] DIMENSION</p> <p>ZINC PLATED COMPONENTS TO BE PLATED PER ASTM B633-07, SERVICE CONDITION SC2, TYPE II, CHROMATE USING TRIVALENT CHROMIUM. (HEXAVALENT CHROMIUM NOT PERMITTED)</p>	<p>MRW AGREEMENT</p> <p>APPROVED PRINT CONSTITUTES METHOD RACE WHEELS AGREEMENT TO EXTERNAL ENVELOPE DIMENSIONS, MATERIAL SPECIFICATIONS AND INTERFACE DIMENSIONS TO MATING PARTS. VENDOR IS RESPONSIBLE FOR FUNCTIONALITY AND PERFORMANCE OF THE PRODUCT, WHICH IS NOT INCLUDED IN THIS APPROVAL AGREEMENT.</p>	<p>UNLESS OTHERWISE SPECIFIED DIMENSIONS ARE IN MILLIMETERS</p> <p>TOLERANCES:</p> <p><i>Metric</i></p> <p>No decimals: +/- 0.5</p> <p>1 place decimal: +/- 0.2</p> <p>2 place decimal: +/- 0.1</p> <p><i>Inch</i></p> <p>Fractional: +/- 1/64 (0.156in)</p> <p>2 place decimal: +/- .010</p> <p>3 place decimal: +/- .005</p> <p>Angular: +/- 1/2°</p> <p>BORDER REV A</p>	<table border="1"> <tr> <td></td> <td>NAME</td> <td>DATE</td> </tr> <tr> <td>DRAWN</td> <td>SJK</td> <td>01/13/17</td> </tr> <tr> <td>APPROVED</td> <td>SJK</td> <td>01/13/17</td> </tr> <tr> <td>VENDOR</td> <td colspan="2">VENDOR NUMBER</td> </tr> </table>		NAME	DATE	DRAWN	SJK	01/13/17	APPROVED	SJK	01/13/17	VENDOR	VENDOR NUMBER		<p>METHOD RACE WHEELS</p> <p>42245 Remington Ave. Temecula, CA 92590</p> <p>Phone:866-779-8604 www.methodracewheels.com</p>
		NAME	DATE													
	DRAWN	SJK	01/13/17													
	APPROVED	SJK	01/13/17													
VENDOR	VENDOR NUMBER															
<p>PROPRIETARY AND CONFIDENTIAL</p> <p>THE INFORMATION CONTAINED IN THIS DRAWING IS THE SOLE PROPERTY OF METHOD RACE WHEELS. ANY REPRODUCTION IN PART OR AS A WHOLE WITHOUT THE WRITTEN PERMISSION OF METHOD RACE WHEELS IS PROHIBITED.</p>	<p>INTERPRET GEOMETRIC TOLERANCING PER: ASME Y14.5M 1994</p>	<p>PROJECTION: FIRST ANGLE</p> <p>SIZE A3</p>	<p>TITLE:</p> <p>MR101 17X6.5 ET-19 BRAKE FITMENT</p>	<p>DWG. NO.</p> <p>MR101 1765 ET-19 BRAKE FITMENT SECTION SLICE</p>												
		<p>MATERIAL</p> <p>ENTER MATERIAL HERE</p>	<p>DO NOT SCALE DRAWING</p>	<p>REV</p> <p>SHEET 1 OF 1</p>												
		<p>FINISH</p> <p>ENTER FINISH HERE</p>														



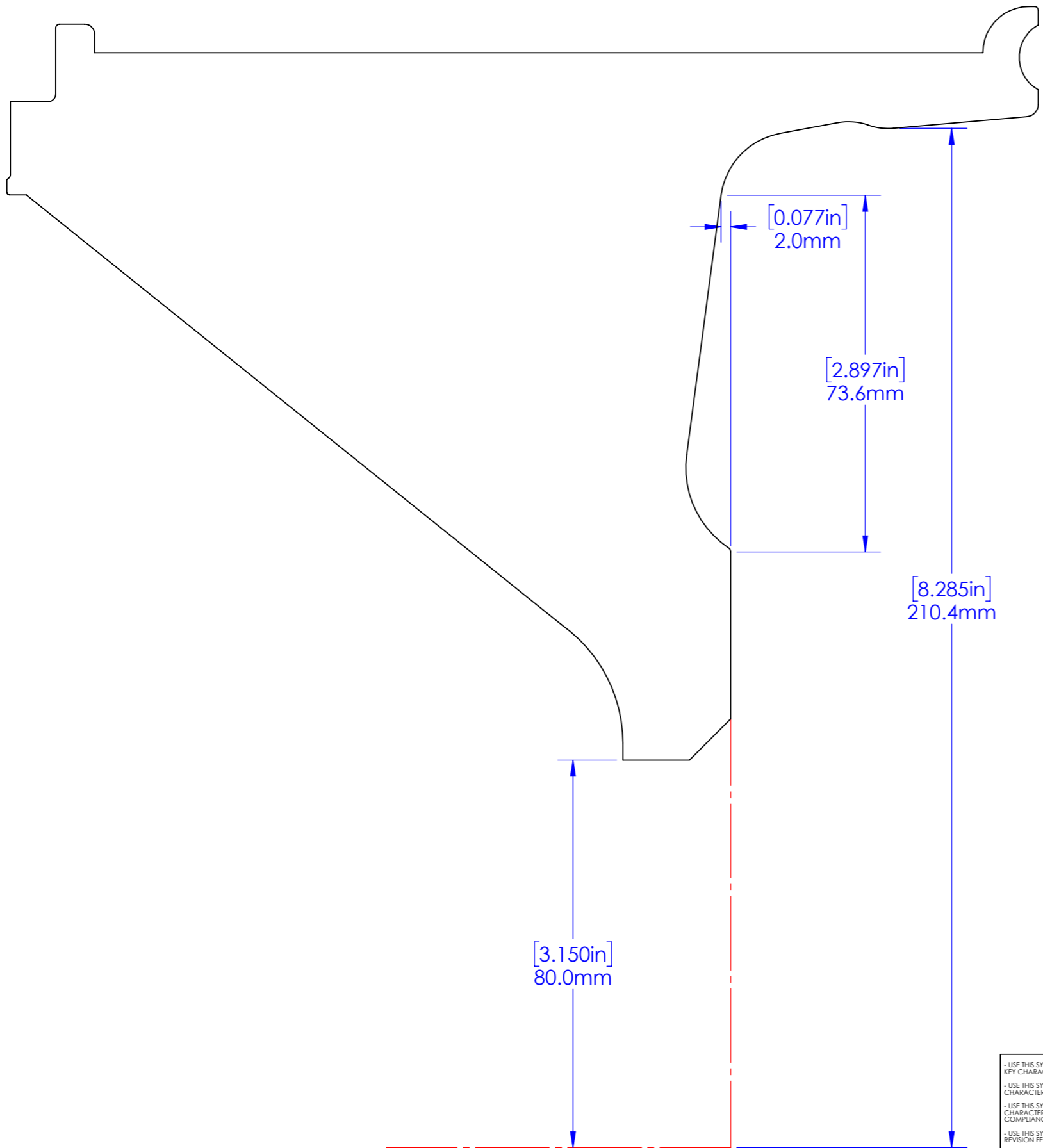
REVISIONS				
ZONE	REV.	DESCRIPTION	DATE	APPROVED
	A	INITIAL RELEASE	01/13/2017	S. KLEINSCHUSTER



- PRINT DRAWING 1:1 SCALE ON 11X17 (A3) PAPER SIZE
- DO NOT SCALE OR FIT TO SHEET
- CONFIRM SCALE REFERENCE MEASURES 1.0 INCHES AFTER PRINTING
- CUT OUT TEMPLATE AND GLUE TO CARDBOARD TO CHECK SUSPENSION/BRAKE CLEARANCE

- USE THIS SYMBOL (TRIANGLE) TO IDENTIFY ANY KEY CHARACTERISTIC - USE THIS SYMBOL (DIAMOND) TO IDENTIFY ANY CHARACTERISTIC RELEVANT TO FIT AND FUNCTION - USE THIS SYMBOL (SHIELD) TO IDENTIFY ANY CHARACTERISTIC RELEVANT TO SAFETY OR COMPLIANCE TO SAFETY REGULATIONS - USE THIS SYMBOL (HEXAGON) TO IDENTIFY REVISION FEATURE CHANGES - DIMENSIONS ARE NUMBERED AS SHOWN [1] DIMENSION ZINC PLATED COMPONENTS TO BE PLATED PER ASTM B633-07, SERVICE CONDITION SC2, TYPE II, CHROMATE USING TRIVALENT CHROMIUM. (HEXAVALENT CHROMIUM NOT PERMITTED)	MRW AGREEMENT APPROVED PRINT CONSTITUTES METHOD RACE WHEELS AGREEMENT TO EXTERNAL ENVELOPE DIMENSIONS, MATERIAL SPECIFICATIONS AND INTERFACE DIMENSIONS TO MATING PARTS. VENDOR IS RESPONSIBLE FOR FUNCTIONALITY AND PERFORMANCE OF THE PRODUCT, WHICH IS NOT INCLUDED IN THIS APPROVAL AGREEMENT.	UNLESS OTHERWISE SPECIFIED DIMENSIONS ARE IN MILLIMETERS TOLERANCES: <i>Metric</i> No decimals: +/- 0.5 1 place decimal: +/- 0.2 2 place decimal: +/- 0.1 <i>Inch</i> Fractional: +/- 1/64 (0.156in) 2 place decimal: +/- .010 3 place decimal: +/- .005 Angular: +/- 1/2° BORDER REV A	NAME: SJK DATE: 01/13/17 APPROVED: SJK DATE: 01/13/17 VENDOR: VENDOR NUMBER	METHOD RACE WHEELS 42245 Remington Ave. Temecula, CA 92590 Phone:866-779-8604 www.methodracewheels.com	
	PROPRIETARY AND CONFIDENTIAL THE INFORMATION CONTAINED IN THIS DRAWING IS THE SOLE PROPERTY OF METHOD RACE WHEELS. ANY REPRODUCTION IN PART OR AS A WHOLE WITHOUT THE WRITTEN PERMISSION OF METHOD RACE WHEELS IS PROHIBITED.	PROJECTION: FIRST ANGLE SIZE A3	TITLE: MR101 17X6.5 ET-38 BRAKE FITMENT	DWG. NO. MR101 1765 ET-38 BRAKE FITMENT SECTION SLICE	REV A
	MATERIAL ENTER MATERIAL HERE	FINISH ENTER FINISH HERE	DO NOT SCALE DRAWING	SHEET 1 OF 1	

REVISIONS				
ZONE	REV.	DESCRIPTION	DATE	APPROVED
	A	INITIAL RELEASE	01/13/2017	S. KLEINSCHUSTER



- PRINT DRAWING AT 1:1 SCALE ON 11X17 (A3) PAPER SIZE
- DO NOT SCALE OR FIT TO SHEET
- CONFIRM SCALE REFERENCE MEASURES 1.0 INCHES AFTER PRINTING
- CUT OUT TEMPLATE AND GLUE TO CARDBOARD TO CHECK SUSPENSION/BRAKE CLEARANCE

- USE THIS SYMBOL (TRIANGLE) TO IDENTIFY ANY KEY CHARACTERISTIC - USE THIS SYMBOL (DIAMOND) TO IDENTIFY ANY CHARACTERISTIC RELEVANT TO FIT AND FUNCTION - USE THIS SYMBOL (SHIELD) TO IDENTIFY ANY CHARACTERISTIC RELEVANT TO SAFETY OR COMPLIANCE TO SAFETY REGULATIONS - USE THIS SYMBOL (HEXAGON) TO IDENTIFY REVISION FEATURE CHANGES - DIMENSIONS ARE NUMBERED AS SHOWN [1] DIMENSION	MRW AGREEMENT APPROVED PRINT CONSTITUTES METHOD RACE WHEELS AGREEMENT TO EXTERNAL ENVELOPE DIMENSIONS, MATERIAL SPECIFICATIONS AND INTERFACE DIMENSIONS TO MATING PARTS. VENDOR IS RESPONSIBLE FOR FUNCTIONALITY AND PERFORMANCE OF THE PRODUCT, WHICH IS NOT INCLUDED IN THIS APPROVAL AGREEMENT.	UNLESS OTHERWISE SPECIFIED DIMENSIONS ARE IN MILLIMETERS TOLERANCES: <i>Metric</i> No decimals: +/- 0.5 1 place decimal: +/- 0.2 2 place decimal: +/- 0.1 <i>Inch</i> Fractional: +/- 1/64 (0.156in) 2 place decimal: +/- .010 3 place decimal: +/- .005 Angular: +/- 1/2° BORDER REV A	NAME: SJK DATE: 01/13/17 APPROVED: SJK DATE: 01/13/17 VENDOR: VENDOR NUMBER	METHOD RACE WHEELS 42245 Remington Ave. Temecula, CA 92590 Phone: 866-779-8604 www.methodracewheels.com	
	PROPRIETARY AND CONFIDENTIAL THE INFORMATION CONTAINED IN THIS DRAWING IS THE SOLE PROPERTY OF METHOD RACE WHEELS. ANY REPRODUCTION IN PART OR AS A WHOLE WITHOUT THE WRITTEN PERMISSION OF METHOD RACE WHEELS IS PROHIBITED.	INTERPRET GEOMETRIC TOLERANCING PER: ASME Y14.5M 1994	PROJECTION: FIRST ANGLE SIZE: A3	TITLE: MR101 17X8 ET-50 BRAKE FITMENT	DWG. NO. MR101 1780 ET-50 BRAKE FITMENT SECTION SLICE
	ZINC PLATED COMPONENTS TO BE PLATED PER ASTM B633-07, SERVICE CONDITION SC2, TYPE II, CHROMATE USING TRIVALENT CHROMIUM. (HEXAVALENT CHROMIUM NOT PERMITTED)	MATERIAL ENTER MATERIAL HERE FINISH ENTER FINISH HERE	DO NOT SCALE DRAWING	REV A	SHEET 1 OF 1