

Made by Marion

Folding Shopper

Requirements

0.5m of thin cotton or polycotton (this is so that the finished bag is not too bulky)

Piece of interfacing 23 x 16cm (9" x 6.5") I've used Vlieseline S13

1 set of plastic snaps

Fabric cutting

Main bag – 71cm wide x 46cm deep (28" x 18")

Handles – 2 pieces 36cm x 5cm (14" x 2")

Pocket – 48cm x 15cm (19" x 6")

Step 1. Make up the pocket.

Fold pocket piece in half, right sides together, add interfacing. Stitch round the 3 sides leaving a gap for turning. Trim corners.

Turn pocket out correct way & top stitch right round 6mm from edge, closing the opening as you go (the opening can be hand stitched together if you prefer)

Measure down 6cm from folded edge and top stitch across the pocket from side to side. This defines the top flap. D to A (see later photo).

Add snaps. Mark a point 2cm down from folded edge & centrally across the pocket. Add snap. On bottom edge (opposite the folded edge) mark point 3cm in from edge & centrally across pocket. Add other half of snap. Take care to make sure you have them the right way round when the bag is folded.



Step 2. Add pocket to bag. Using the main bag piece, fold so you have the centre, mark top & bottom. Place pocket on the centre of the main piece, so that it is approx, 11cm from the top & 12cm from the bottom with the pocket flap at the top. Stitch round 3 sides following the top stitch lines from point A to B to C to D. Pocket is now fixed to bag. Do not sew any closer to the edge than 6mm, this is to make folding the bag easier. Do not sew across from D -A



Step 3. Making the bag up.

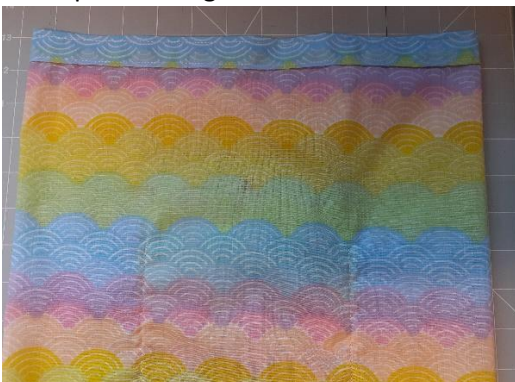
Back seam. Match wrong sides together on the back seam & stitch 5mm from edge. Turn bag inside out & now match the right sides together on the seam you have just sewn & stitch between 8mm to 1cm to enclose the first seam. This French seaming makes the joins a lot stronger than just a single row of stitching, useful as this is a lightweight bag.



Turn bag back to right side showing and adjust so that the seam just stitched is centrally at the back & lines up with the snaps on the pocket. Match the wrong sides of the bottom edge together & stitch 5mm from edge. Turn wrong side out & stitch this bottom seam 8mm – 1cm in, enclosing the first seam.



Hem the top of the bag by turning down 1cm & then 2cm. Stitch right round the hem both at the edge of the hem & the top of the bag.



Step 4. Handles. This is the way I prefer to do a narrow fabric handle that does not require interfacing. First with wrong side of handle facing you, turn in 1 cm at each end, pin. Then on one long side turn in by 1cm. Pin. Turn 2nd long edge in so that it almost meets the first turned in edge, and then turn in again. It should not quite reach the first side. Top stitch along the seam, across the end of the handle, then back down the 2nd side. Stitching lines are approx. 4/5mm from folded edge. Repeat with 2nd handle.



With bag turned inside out, place the ends of the handle on the top hem, so that the outer edge of the handle lines up with the stitching line of the pocket. Place 2nd handle inside the back of the bag, lining up with 1st handle.

Stitch handles securely in place. I stitch mine with a square and cross – not sure how to describe it.



Turn right side out. Your bag is now finished.



To fold – lay down so back is facing you & tuck the handles inside.



Fold one long side in as far as it will go without folding the pocket.



Repeat with second side.



Fold top down as far as it will go.



Fold bottom up as far as it will go.



Now fold bag and pocket together so meets top stitch line on flap.



Fold flap down & snap closed.

I think all of these instructions make sewing and folding this bag sound far more complicated than it really is, but difficult to describe any other way. I'm not a professional.

Variations

Pocket can be made in matching or contrasting fabric.

Instead of a snap, you could use button and buttonhole, magnetic snaps etc, whatever you like.

I have made some of my bags using one long piece for the main bag (90cm x 37cm) this will put a fold at the bottom of the bag & 2 side seams. This way is not suitable for fabrics with 1 directional patterns as the pattern on the fabric on 1 side of your bag will be upside down.

Or – you can use 2 completely separate pieces, each (46cm x 37cm), but you will need to seam both sides and the bottom of the bag.

None of the sizes given are set in stone, adjust as you like, however, bear in mind that if you make the bag much bigger it may not fold in as neatly.

I hope you all enjoy making & using the bag.

Marion

Marion.stroud@btinternet.com

[Facebook.com/madebymarion31](https://www.facebook.com/madebymarion31)