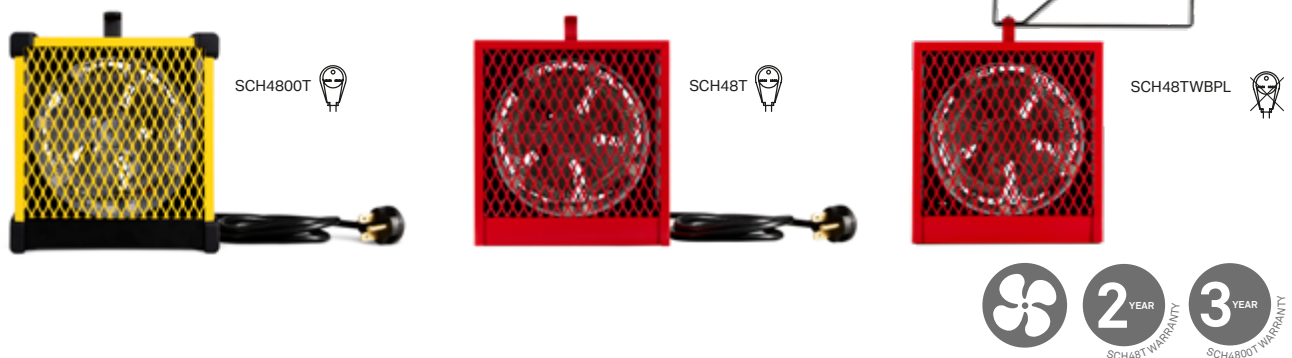


# SCH

## PORTABLE MULTIPURPOSE HEATER



### EFFICIENT, SAFE AND VERSATILE

Any construction worker will tell you that the SCH is the fast-acting heating unit most often found on construction sites, hence its nickname: "the construction heater." Housed in a 20-gauge steel casing, it features a rugged protective grille and nichrome element for instant heat at start-up. Despite its small size, this heating powerhouse boasts 4800 W. The SCH can be placed on the ground or against a wall, using a support bracket, available as an option. This heater is right at home, on construction sites and in workshops and garages. Choose the SCH when you need rapid, reliable heat.

- **SAFE AND RUGGED**  
20-GAUGE STEEL
- **"COOL TOUCH" HOUSING**
- **4800 W HOUSED IN A SMALL UNIT**
- **OPEN COIL GENERATES INSTANT HEAT**
- **CLOSED AND PERMANENTLY LUBRICATED MOTOR (SCH4800T)**
- **VERSATILE: PERMANENT OR TEMPORARY INSTALLATION**  
WITH OPTIONAL SUPPORT BRACKET

#### COLOURS

- **standard:** red (SCH48T models), canary yellow (SCH4800T)

#### FINISH

- epoxy-polyester powdercoat

#### MANUFACTURING

- 20-gauge steel cabinet
- sturdy handle for portability that also serves as cord rack and which adapts to the mounting bracket
- 6 ft. (2 m) 12 Awg. molded cable with 3-prong grounded, 30 A 250 V plug (except for SCH48TWBPL)
- 6 ft. (2 m) 12 Awg. molded cable for hard-wired connection (SCH48TWBPL)
- thermal protection with automatic reset

#### MOTOR

- 250 CFM fan (SCH48T models)
- closed and permanently lubricated motor and 300 CFM fan (SCH4800T)

#### ELEMENT

- nichrome element ensuring increased comfort
- cone-shaped to concentrate the air around the element

#### CONTROL

- built-in thermostat with control knob protector

#### INSTALLATION

- connects to a standard 30 A 250 V grounded receptacle (except for SCH48TWBPL)
- hard-wired into a wall junction box (SCH48TWBPL)
- mounting bracket that can rotate at 360° while preventing the unit from tipping

#### WARRANTY

- three years (SCH4800T)
- two years (SCH48T models)

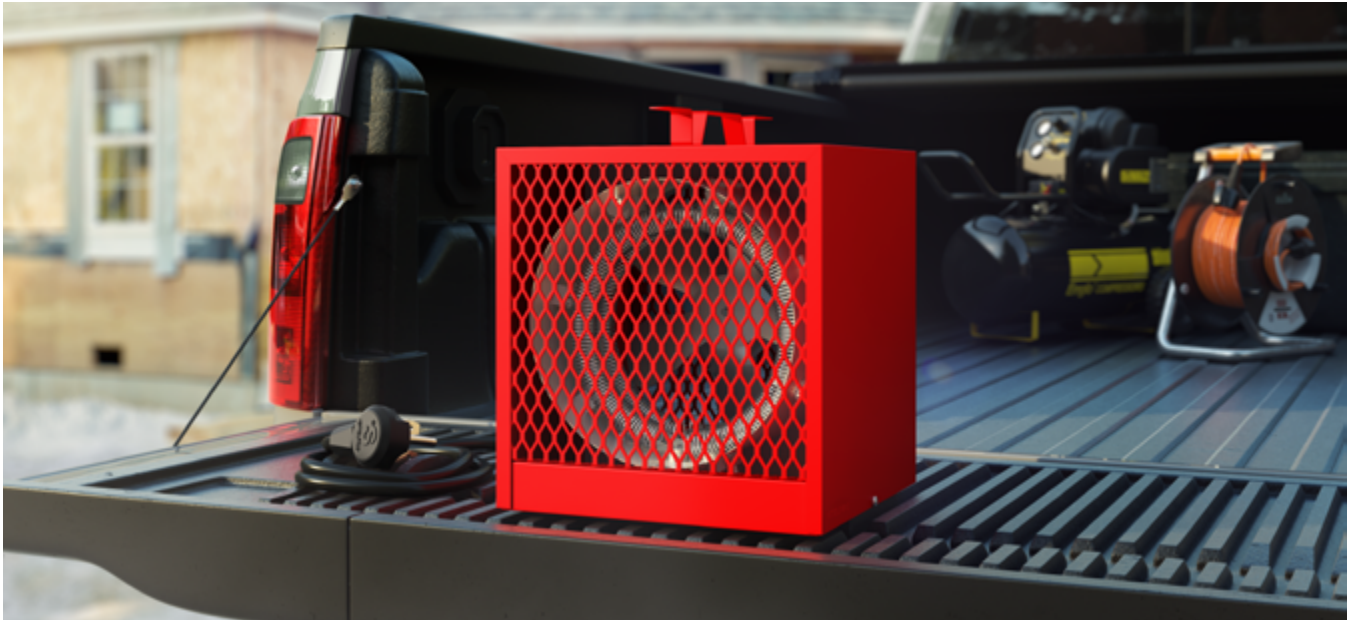
#### IDEAL FOR:

construction site, garages

# °STELPRO

Stelpro reserves the right to modify descriptions, manufacturing specifications or prices without prior notice. No returns accepted on optional-colour products. For all the latest models and prices, please refer to our website at [www.stelpro.com](http://www.stelpro.com).





## TECHNICAL SPECIFICATIONS

PRODUCT	POWER	VOLTAGE	MOTOR		CONNECTION	MOUNTING BRACKET	COLOUR	WEIGHT		PRICE
CODE	WATTS	VOLTS	CFM					KG	LB	
<b>SCH48T</b>	4800/3600	240/208	250	---	30 A 250 V PLUG	SOLD SEPARATELY	RED	5.9	13	<b>164.00</b>
<b>SCH48TWBPL</b>	4800/3600	240/208	250	---	HARD-WIRED	INCLUDED	RED	5.9	13	<b>206.00</b>
<b>SCH4800T</b>	4800/3600	240/208	300	CLOSED AND PERMANENTLY LUBRICATED	30 A 250 V PLUG	NOT COMPATIBLE	CANARY YELLOW	5.9	13	<b>217.00</b>

## ACCESSORY

PRODUCT	DESCRIPTION	PRICE
<b>SCH-WBB</b>	mounting bracket (SCH48T model)	<b>52.00</b>

## THROW DISTANCE AND HEAT RISE

MODEL	UNITS	THROW DISTANCE		HEAT RISE	
		M	FT	°C	°F
<b>SCH48T</b>	4.8	5.9	19'4"	34	61
<b>SCH4800T</b>	4.8	6.4	21'	28	51

## TECHNICAL DRAWINGS

