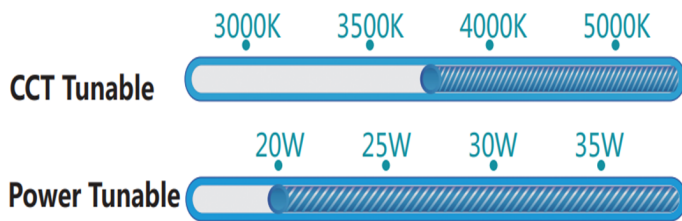
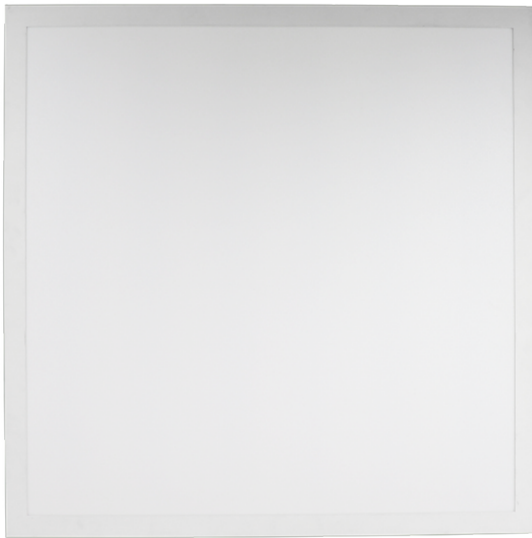
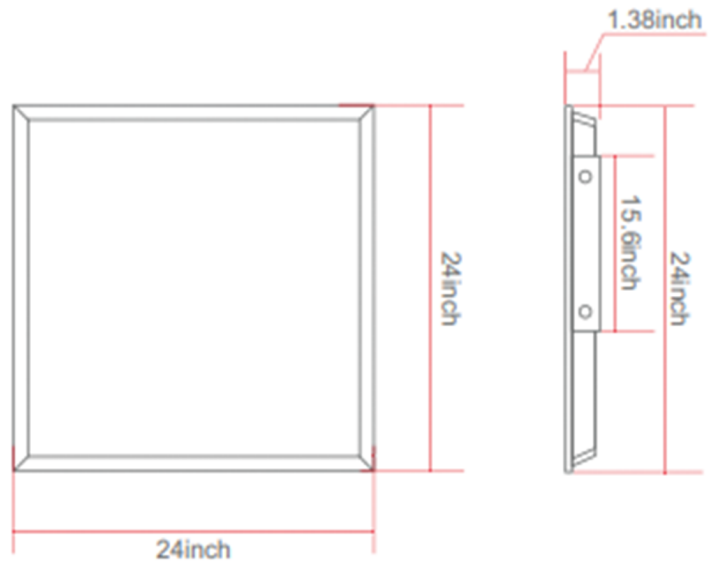


Product picture



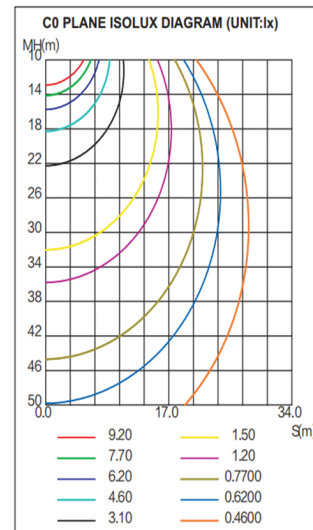
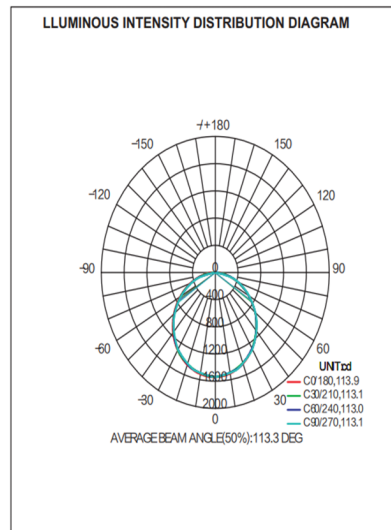
Dimensions

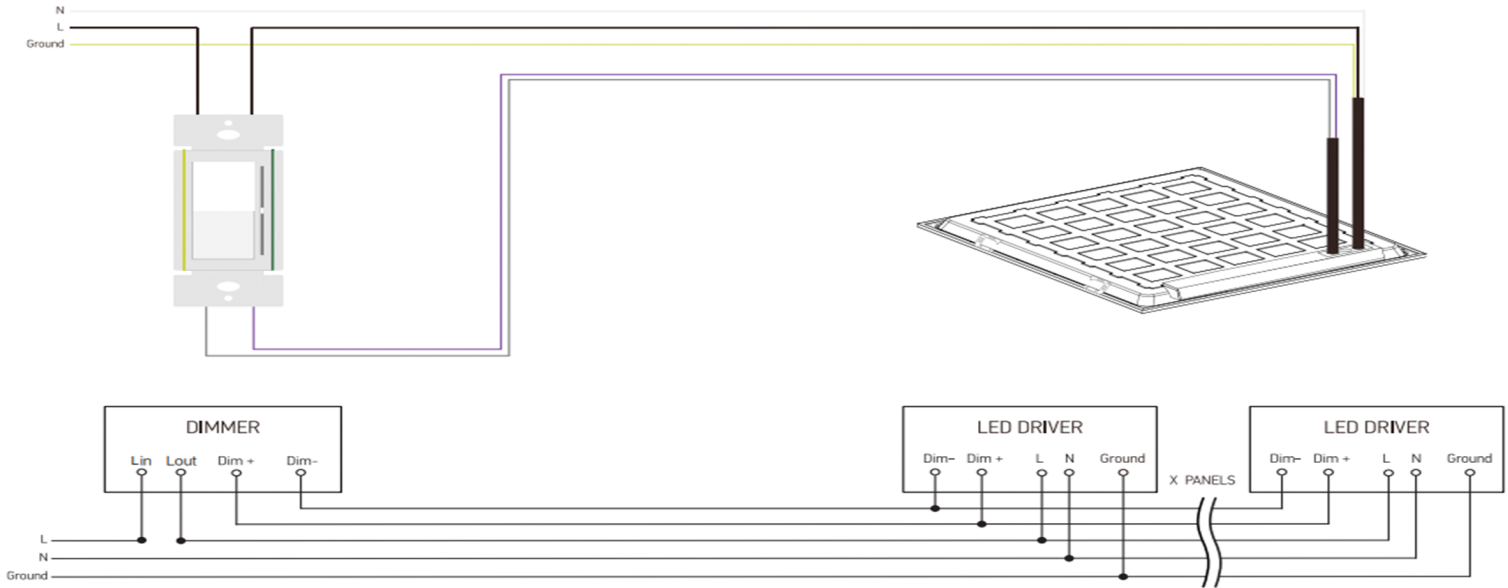


}	20W 3000K	25W 3000K
	20W 3500K	25W 3500K
	20W 4000K	25W 4000K
	20W 5000K	25W 5000K
	30W 3000K	35W 3000K
	30W 3500K	35W 3500K
	30W 4000K	35W 4000K
	30W 5000K	35W 5000K

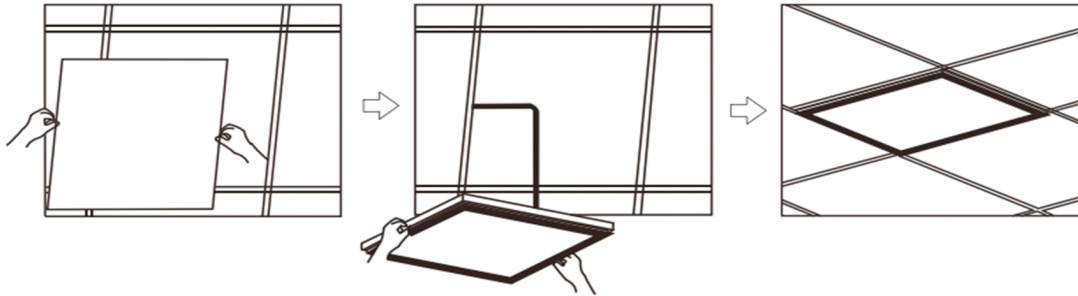
- Without LGP, never turn yellow
- Isolated driver, PF>0.9, THD≤15 %
- Super bright SMD2835 LEDs, LM80 rated Ra>80
- Lumen output: 130LM/W
- IP Rating: IP40
- Operating temperature: -20°C to 50°C
- AC120-277V 0-10V dimmable
- Non-flicker, no dark spot, protect your eyes
- Ideal replacement for traditional troffer with over 80% energy saving
- 5 years warranty
- ETL,CETL

24 x 24inch 35W

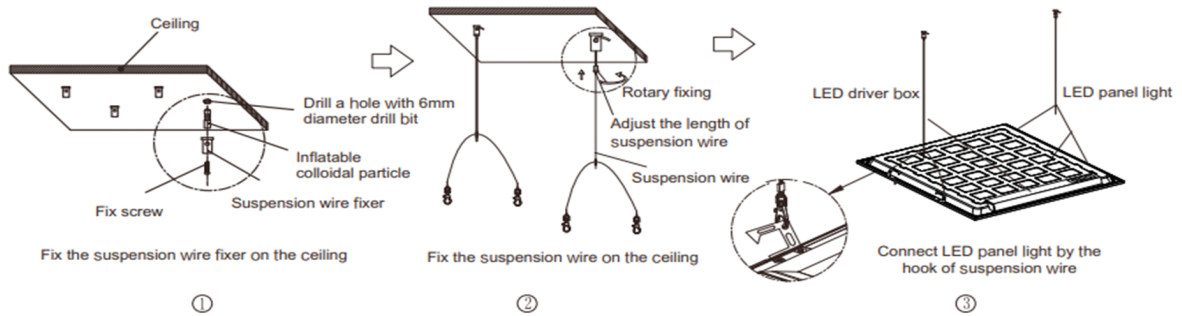




Recessed Mounted Installation



Suspending Installation



Surface Mounted Installation

