

GemLoupe User Manual



Scan to watch
Setup Video



What's Included?



1pc GemLoupe



1pc Empty Lens



1pc Sparkle Lens



1pc 5x Lens



1pc Power Cord



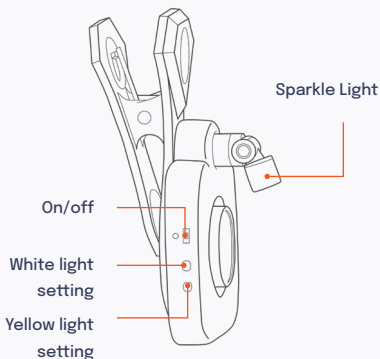
1pc Smartphone Holder



1pc Cleaning Cloth



1pc Lanyard



To change light intensity, press the light setting button up to three times.

White Light

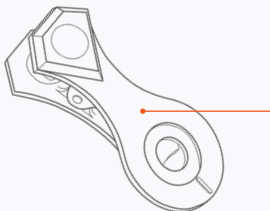
Configured at 5500K; perfect for diamonds and fine jewelry.

Yellow light

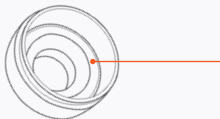
Configured at 3500K; perfect for gems like emeralds, rubies, and opals.



Sparkle light
Plug in to
switch on



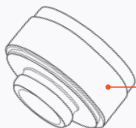
Clip
Detach when
installing
GemLoupe (p7)



Empty lens
1x Magnifica-
tion



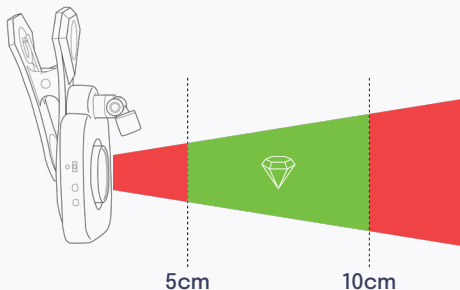
Sparkle Lens
Made to
capture fires
and scintilla-
tion



5X lens

Captures 5x magnification

NOTE: The 5x lens has a shooting distance of 5-10 cm (2-4 in.) When in use, make sure jewelry and gemstones are placed within the focal range.





Before you start Install the GemLightbox App



Scan to download
Or search for “GemLightbox”
in your App Store

Installing the GemLoupe



Please ensure you follow all the steps exactly as listed below to achieve the best results.



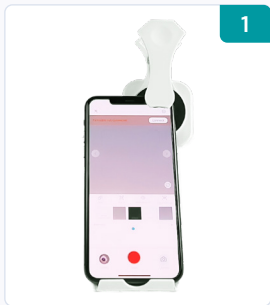
Place the Clip onto the phone camera

Make sure the lens is in the center of the hole.

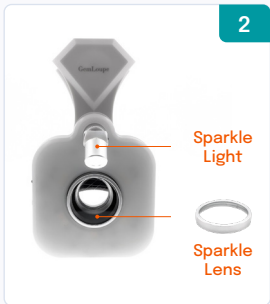


Attach the body onto the clip

Capturing Sparkles



Place the Clip onto the phone camera

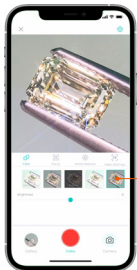


Make sure the Sparkle lens and the Sparkle light are installed.

Point the Sparkle light at the jewelry to maximize Sparkles



3



Make sure
GemLoupe
filter is
selected

Open GemLightbox
App > Camera >
Filters > GemLoupe

4

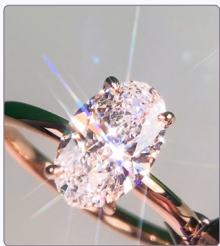


Take photos
or videos

We recommend
taking videos to
show the sparkles
on all angles

Having trouble? Visit
support.picupmedia.com

Taken with GemLoupe



Taken with Sparkle Lens



Taken with 5x Lens without Sparkle lens



Taken with **White light**



Taken with **Yellow light**



To change light intensity, press the side button up to three times.

Precautions for Use



Dust prevention

Please refrain from touching the lens directly. Always hold the lens from the cap only. If there is dust, use an air blower or microfiber cloth for gentle cleaning

Liquid prevention

Please prevent contact with any liquids as they may leave stains on the lens resulting in blurry images and videos

Breakage prevention

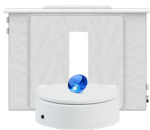
The lenses are made of high quality glass which will break if impacted. Put the lens back into the case after each use.

GemLightbox Collection



Related Products

4.8 ★
456 Reviews



GemLightbox & Turntable Set

- ✔ Jewelry photography
- ✔ Jewelry 360 videos

4.9 ★
333 Reviews



GemLightbox Macro

- ✔ 10X Magnification
- ✔ For loose diamonds and gemstones
- ✔ 0.1 carat to 50 carats

www.picupmedia.com/shop-page

Join Global Jewelers Network



Discuss, learn, and network with
other jewelers worldwide



Join Digital Jewelers
Facebook group

Find us on social media



@gemlightbox



GemLightbox



Picup Media



@picup_media



Thank you!

At Picup Media, we've helped over 10,000+ jewelers enter the digital world and we hope to share the same experience with you!

We created GemLoupe during the pandemic to seamlessly assist the industry into going digital when going digital is the ONLY way forward.

As you take your first GemLoupe photo, we want to say thank you and congratulations! The digital future is now, but together, we will thrive!

Onwards to business resiliency!

The Picup Media Team

