



# INSTALLATION GUIDE

[www.windlogger.co.uk](http://www.windlogger.co.uk)

WindTracker can be wall or pole mounted using the 4 holes in the base of the box. Remove the lid to access these holes.



Please make sure the logger is installed with its cable gland facing down

## Installing the lid

Place the lid onto the box and tighten the screws into the holes until the seal is compressed. Do not overtighten.



## Please remember



- Ensure the logger is mounted with its gland facing down to avoid water leaks.
- Change batteries at least once per year
- Download your data as often as possible
- Do not modify the WindTracker as this will void your warranty
- Do not extend cables as this may affect the performance of the logger.

## 1- Connectors

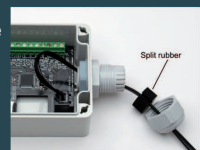
1 x Anemometer, 1 x wind vane



- V+**: Battery positive power (red)
- G**: Battery negative power (black)
- G**: Common ground
- T**: Not used
- G**: Common ground (spare)
- G**: Common ground (wind vane)
- D**: Wind vane signal
- D+**: Wind vane power supply
- G**: Common ground
- A2**: Not used
- G**: Common ground (anemometer 1)
- A1**: Anemometer 1 signal

## Anemometers and Wind Vanes

For a single Pro-D anemometer, disassemble cable gland and thread the connector/cable through the gland/seal, and plug into the socket on the board.



Other/additional anemometers connect to the terminal block as shown below.

For a single anemometer, use the A1 input.



### Pro Anemometer

- G** (red)
- A1** (black)
- D** (green)
- D+** (yellow)



### Vortex Anemometer

- G** (red)
- A1** (black)

## 2- Power

The **windtracker** uses two C type batteries.

Always use premium alkaline batteries as these provide the best battery life



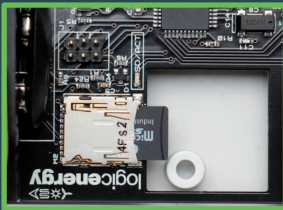
## 3- Operation

WindTracker has a green status LED next to the SD card:

- Short flash each 5 secs:** Normal logging mode
- Double flash each 5 secs:** Battery low
- Long flash:** Writing to SD card
- Rapid flashing:** SD card error

LED next to the A1 terminals will flash each 5 secs when anemometer pulses are detected.

## 4- To Read Data



To read out the data, insert the SD card into WindTracker card socket until it locks in.

The LED flashes to indicate writing, then the WindTracker returns to normal operation.

Remove the SD card by pushing it in to unlock, then pulling it out.



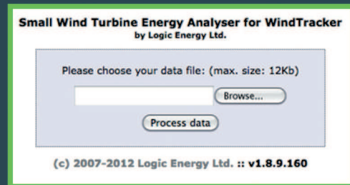
## 5- To Generate Wind Report

Remove SD card from **windtracker** and insert into computer.

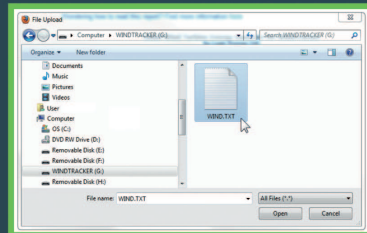
- Go to web browser address:

<http://report.windtrackers.com>

- Click the "Browse..." button



- Browse to Removable Disk/SD Card and select the WIND.TXT file



- Click Process Data to create your report. The **windtracker** will continue to track until you reset it for a completely new assessment.

## 6- To Start Wind Assessment

You must reset **windtracker** before commencing a new assessment. For easy instructions go to:

<http://faq.windtrackers.com>

[www.windlogger.co.uk](http://www.windlogger.co.uk)