

The LeWL Windlogger

INSTALLATION GUIDE

www.windlogger.co.uk

LeWL can be wall or pole mounted using the four holes provided on each corner of the box.



Please make sure the logger is installed with its cable gland facing down

Installing the lid

Place the lid onto the box and tighten the screws into the holes until the seal is compressed. Do not overtighten.



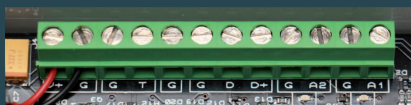
Please remember



- Ensure the logger is mounted with its gland facing down to avoid water leaks.
- Change batteries every 3 months.
- Always download your data on a monthly basis.
- Do not modify the LeWL Windlogger as this will void your warranty.
- Do not extend cables as this may affect the performance of the logger.

1- Connectors

2 x Anemometer, 1 x wind vane and 1 x temperature (NTC) input

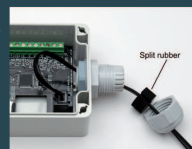


- V+: Battery positive power (red)
- G: Battery negative power (black)
- G: Common ground (for NTC)
- T: NTC temperature sensor
- G: Common ground (spare)
- G: Common ground (wind vane)
- D: Wind vane signal
- D+: Wind vane power supply
- G: Common ground (anemometer 2)
- A2: Anemometer 2 signal
- G: Common ground (anemometer 1)
- A1: Anemometer 1 signal

Anemometers and

Wind Vanes

For a single Pro-D anemometer, disassemble cable gland and thread the connector/cable through the gland/seal, and plug into the socket on the board.



Other/additional anemometers connect to the terminal block as shown below.

For a single anemometer, use the A1 input.



Pro Anemometer

- G (red)
- A1 (black)
- D (green)
- D+ (yellow)



Vortex Anemometer

- G (red)
- A1 (black)

2- Settings

The LeWL wind logger can be setup via the SD card or serial port (refer to main manual for serial port setup).

Setup via SD card is done by editing the "setup.txt" file on the SD card supplied. To do this use the "leWL_setup" application on the SD card.



LeWL Setup via lewl_setup On the SD card.

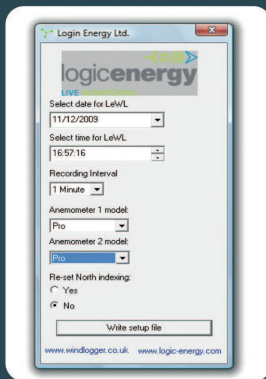


Open lewl_setup and select the parameters you wish to use:

Time & Date: These are set up automatically to your computer's clock.

Recording Interval: Recommended to use 1 minute.

Anemometer 1&2 model: Pro as default, change if using any other compatible model.



When all the parameters are setup, click on "write setup file".

The program will write these automatically to the SD card. Insert the SD card on the LeWL wind logger.

After new settings have been taken, you should see the green LED on the LeWL do 1 long flash then 2 shorter flashes before going into normal operation. This indicates new settings have been setup successfully.

3- Power

x2



LeWL uses two C type alkaline batteries. Always use premium alkaline batteries as these provide the best battery life.



4- Operation

LeWL has a green status LED next to the SD card:

- Quick flash each 5 secs:** Normal logging mode
- Flashing:** Card missing or low battery
- Long flash:** Writing data to SD card
- On solid:** LeWL is in setup mode

The green LEDs next to the A1 and A2 terminals will flash each 5 secs when anemometer pulses are detected.

5- Getting the Data



To read the data, insert the SD card into a memory card reader or adaptor on your computer.

The SD card should appear as a removable drive, and you can access the data CSV files.

See user manual on the SD card for more information on using the data.

www.windlogger.co.uk