

# LeNETmobile Wind Advanced



## logicenergy

LIVE MONITORING

### Features

- 14 channels - 4 x anemometer channels, 2 x wind vane channels, 4 x digital channels, 4 x analogue channels.
- Pre-processed wind data channels - Average, standard deviation and gust data. Vectorial wind direction
- Wireless: GSM/GPRS communications every 10 minutes to LeSENSE web portal.
- 1 second data sampling rate
- Adheres to IEC-61400 wind standards for data.
- Alert function, combined alert function for up to 3 sources
- Geo map location, customisable standard dashboard, mobile phone access, charting and reporting tools, site comparison tool, GSM signal strength indicator, special wind report function.
- Configuration of the logger's sensors done remotely via its provided web portal LeSENSE
- Data available in raw format, accessed via online web portal, LeSENSE

### Benefits

- Fast data - GSM communications every 10 minutes
- Set your own alert functions
- Limit visits to site by checking GSM signal via the online indicator
- Limit visits to site by monitoring battery and power supply
- Save time with the special wind report function already installed on LeSENSE
- No software required on your computer to setup LeNETmobile, just a web browser
- Robust and long lasting due to very low power consumption and good quality manufacturing in the UK.
- Keep a track of your sites via Geo map location

### Applications

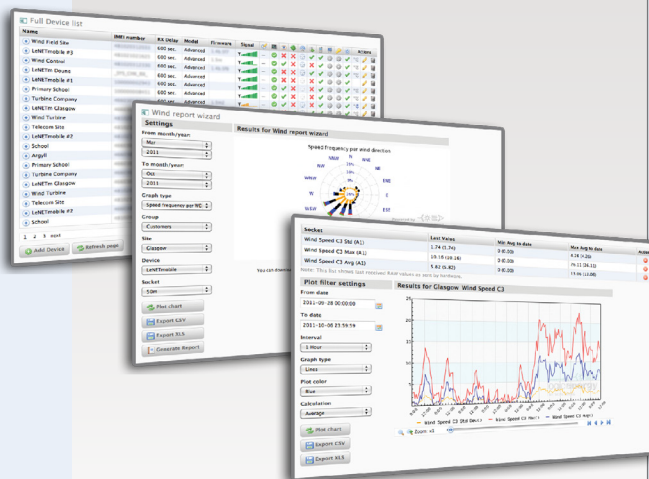
- Wind site assessment
- Wind turbine performance
- Weather stations
- Construction site safety



LeNETmobile Wind Advanced is a GPRS enabled 14 channel data acquisition device used for live remote monitoring of MET masts and Wind Turbines. Data is automatically sent every 10 minutes to the Logic Energy web portal LeSENSE, a fully automated and managed remote cloud application.

Logic Energy live remote monitoring dataloggers are so automated that even the configuration of the logger is done remotely via its provided web portal LeSENSE.

Connect your sensors, power up the system and that is all you need to start getting data. You can finish the configuration from the comfort of your desk.



### Software Features

- Customisable dashboard
- Charting and reporting tools
- Data export tools - processed or raw format
- Site comparison tool
- Mobile phone access for easy install set up
- Geo Location map of all sites
- GSM signal strength indicator
- Alert and alarm function
- Log book of alerts
- Online configuration of sensors
- Create users and data access permissions online
- Multiple site online dashboard

### Optional Add Ons:

- Branded customer dashboards
- Bespoke auto reports
- Bespoke mobile phone displays

## Technical Specification:

**Available Channels:** 14 channels - 4 digital anemometer, 2 x analogue wind vane, 4 digital counters, 4 analogue and power supply/battery monitor

**Data Sampling Rate:** 1Hz (conforms to IEC 61400). Average data over 10 minute period

**Resolution:** 0.001Hz for wind speed and 0.3 degree for wind vane

**Accuracy:** Wind Speed (A1-A4) accuracy: better than 100ppm (parts per million). Analogue inputs accuracy better than 0.5%

**Reporting Interval to LeSENSE web portal:** 10 minutes

**Memory:** Writes data to SD card every 10 minutes.

**Capacity:** Over 10 years data

**Data Transfer:** Automatic data transfer every 10 minutes to LeSENSE web portal

**Operating bands for GSM LeNETmobile:** Quadband (worldwide) – GSM800, DsC1800, GSM850 and DSC1900

**Connector:** SMA connector for antenna

**Operating temperatures for LeNETmobile datalogger:** -20°C -70°C

**Power Consumption:** Avg 5mA

**Sensor Power:** Pulsed 3.3Vdc, max 20mA total, 10 millisecond excitation pulse each sample period

**Compatible Sensor Manufacturers:** Thies Clima, Vector Instruments, NRG, Secondwind

**Power Supply Options:** 6v or 12v rechargeable battery and PV panel kit  
Advanced PV power kit available  
Volts 7Ah rechargeable battery, PV charger and 10W PV panel  
Mains supply 9-12 volt regulated power supply  
Battery power supply

**Material:** White High Gloss Acrylic Capped ABS

**Dimensions:** 160x125x13mm

**Weight:** 303gm

## Ordering Information:

Logic Energy Ltd. 1 Ainslie Road, Hillington Park, Glasgow, G52 4RU

Tel: +44 (0) 141 585 6496, Fax: +44 (0) 141 585 6497

Support: support@logicenergy.com

[shop.logicenergy.com](http://shop.logicenergy.com)